

USH 41/45: CTH Q TO STH 145 (WAUKESHA AND MILWAUKEE COUNTIES) CONTINUOUS (24 HOUR) 2 LANE CLOSURE NO DIVERSION ROUTE (MAX QUEUE METHOD)	OCTOBER
	Analyzed for 2009 Construction Season

SUMMARY OF TRAFFIC MODEL OUTPUT

MON-THUR SOUTHBOUND DIRECTION

TIME OF DAY	FLOWS AND CAPACITY IN VEH/HR							AVERAGE SPEEDS IN MPH			
	MAIN ROUTE		SITE CAPA CITY	FLOW		AV.DEL PER VEH (MINS)	AVERAGE QUEUE (VEH)	MAIN ROUTE		SITE	
	DEMAND FLOW	PCT HEAVY		MAIN ROUTE	'DIVER TED'			WITHOUT WORK ZONE	WITH WORK ZONE		
MID-1 AM	371	0.0	1500	371	0	0.52	0	70.2	62.0	44.0	
1-2 AM	260	0.0	1500	260	0	0.50	0	70.2	62.2	44.5	
2-3 AM	275	0.0	1500	275	0	0.51	0	70.2	62.2	44.4	
3-4 AM	411	0.0	1500	411	0	0.52	0	70.2	61.9	43.8	
4-5 AM	859	0.0	1500	859	0	0.57	0	69.7	60.9	42.2	
5-6 AM	2985	0.0	1499	1914	1072	11.77+	303	67.0	17.3	30.8	
6-7 AM	6126	0.0	1500	1500	4626	14.75+	400	49.0	13.5	30.8	
7-8 AM	6548	0.0	1500	1500	5048	14.40+	400	46.1	13.5	30.8	
8-9 AM	4403	0.0	1500	1500	2903	15.84+	400	60.8	13.5	30.8	
9-10 AM	3159	0.0	1500	1500	1659	16.25+	400	66.8	13.5	30.8	
10-11 AM	2884	0.0	1500	1500	1384	16.27+	400	67.1	13.5	30.8	
11AM-NOON	2972	0.0	1500	1500	1472	16.27+	400	67.1	13.5	30.8	
NOON-1PM	3113	0.0	1500	1500	1613	16.26+	400	66.9	13.5	30.8	
1-2 PM	3162	0.0	1500	1500	1662	16.25+	400	66.8	13.5	30.8	
2-3 PM	3658	0.0	1500	1500	2158	16.19+	400	65.9	13.5	30.8	
3-4 PM	4007	0.0	1500	1500	2507	16.04+	400	63.5	13.5	30.8	
4-5 PM	3937	0.0	1500	1500	2437	16.07+	400	64.0	13.5	30.8	
5-6 PM	3395	0.0	1500	1500	1895	16.24+	400	66.5	13.5	30.8	
6-7 PM	2625	0.0	1500	1500	1125	16.29+	400	67.4	13.5	30.8	
7-8 PM	1871	0.0	1500	1500	371	16.35+	400	68.4	13.5	30.8	
8-9 PM	1529	0.0	1499	1470	59	16.24+	396	68.8	13.6	30.8	
9-10 PM	1340	0.0	1499	1340	0	13.11	319	69.1	16.1	30.8	
10-11 PM	1042	0.0	1499	1042	0	2.22	64	69.4	44.5	38.7	
11PM-MID	771	0.0	1500	771	0	0.56	0	69.8	61.1	42.5	

+ INDICATES QUEUEING EXCEEDS USER-SPECIFIED MAXIMUM LIMIT

----- SITE BREAKDOWN DELAYS -----	
BREAKDOWN DURATION (MINS)	0
RANGE OF QUEUE DELAY - MIN (VEH-H) MAX	0.0
AV BREAKDOWNS PER DAY	0.00
AV QUEUE DELAY/DAY (VEH-H)	0.0
AV TOTAL DELAY/DAY (VEH-H)	0.0

----- SITE ACCIDENT DELAYS -----	
BREAKDOWN DURATION (MINS)	0
RANGE OF QUEUE DELAY - MIN (VEH-H) MAX	0
AV BREAKDOWNS PER DAY	0
AV QUEUE DELAY/DAY (VEH-H)	0
AV TOTAL DELAY/DAY (VEH-H)	0

AVERAGE ACCIDENT NUMBERS (PIA/DAY)	
MAIN ROUTE WITHOUT WORKS	0.0452
MAIN ROUTE WITH WORKS	0.0198
'DIVERSION'	0.0542
<small>PIA: Personal Injury Accidents</small>	
IMPACTS ON ROAD USERS	
ROAD USER COSTS PER DAY	\$193,865
CONGESTED HOURS PER DAY*	16

*Delays Exceeding User-Specified Maximum

**USH 41/45: CTH Q TO STH 145 (WAUKESHA AND MILWAUKEE COUNTIES)
 CONTINUOUS (24 HOUR) 2 LANE CLOSURE
 NO DIVERSION ROUTE (MAX QUEUE METHOD)**

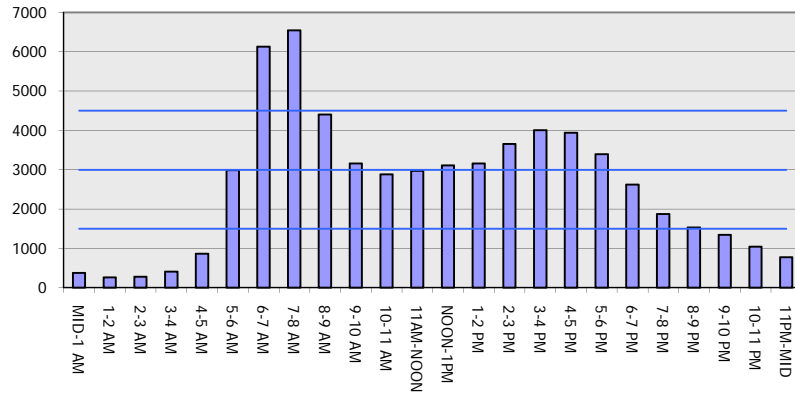
OCTOBER

Analyzed for 2009
 Construction Season

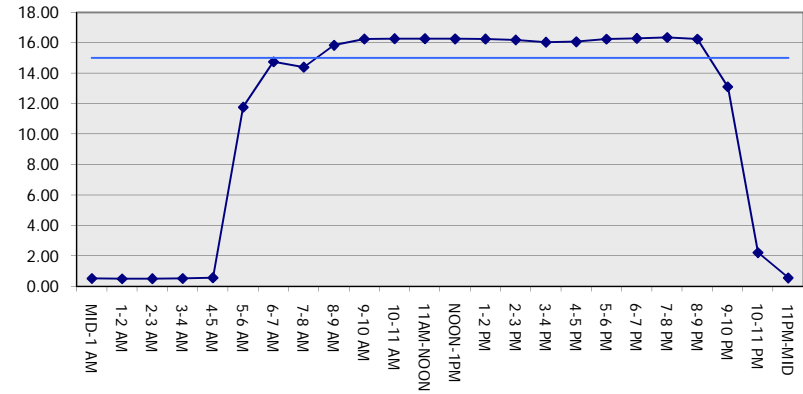
GRAPHICAL REPRESENTATION OF TRAFFIC MODEL INPUT AND OUTPUT

MON-THUR SOUTHBOUND DIRECTION

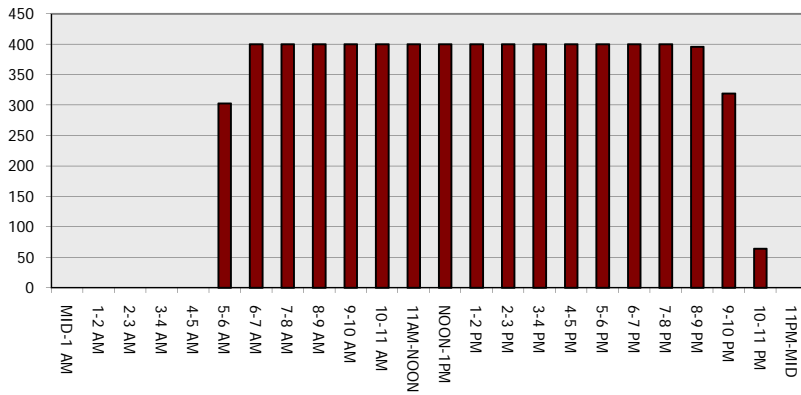
Main Route - Traffic Demand (Vehicles Per Hour)



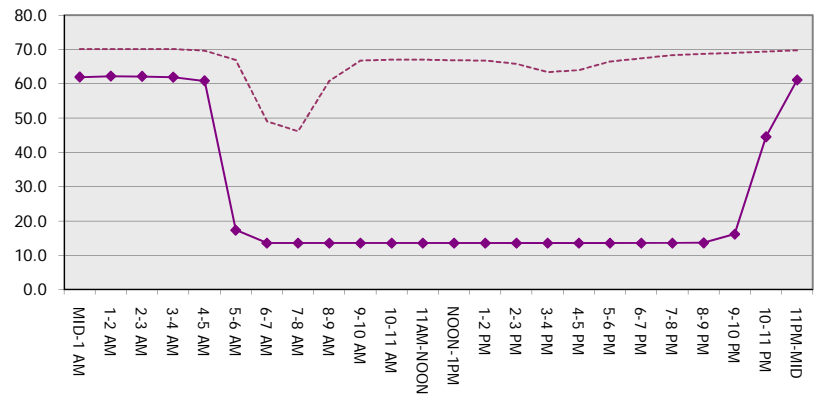
Main Route Average Delay Per Vehicle (Minutes)



Main Route - Average Queue Length (Vehicles)



Main Route - Average Speed (MPH)



USH 41/45: CTH Q TO STH 145 (WAUKESHA AND MILWAUKEE COUNTIES) CONTINUOUS (24 HOUR) 2 LANE CLOSURE NO DIVERSION ROUTE (MAX QUEUE METHOD)	OCTOBER
	Analyzed for 2009 Construction Season

SUMMARY OF TRAFFIC MODEL OUTPUT

MON-THUR NORTHBOUND DIRECTION

TIME OF DAY	FLOWS AND CAPACITY IN VEH/HR							AVERAGE SPEEDS IN MPH		
	MAIN ROUTE		SITE CAPA CITY	FLOW		AV.DEL PER VEH (MINS)	AVERAGE QUEUE (VEH)	MAIN ROUTE		SITE
	DEMAND FLOW	PCT HEAVY		MAIN ROUTE	'DIVER TED'			WITHOUT WORK ZONE	WITH WORK ZONE	
MID-1 AM	394	0.0	1500	394	0	0.52	0	70.2	62.0	43.9
1-2 AM	276	0.0	1500	276	0	0.51	0	70.2	62.2	44.4
2-3 AM	270	0.0	1500	270	0	0.51	0	70.2	62.2	44.4
3-4 AM	305	0.0	1500	305	0	0.51	0	70.2	62.1	44.3
4-5 AM	695	0.0	1500	695	0	0.55	0	69.9	61.3	42.8
5-6 AM	1795	0.0	1499	1795	0	2.90	74	68.5	39.8	30.9
6-7 AM	3106	0.0	1499	1500	1606	16.11+	399	66.9	13.6	33.2
7-8 AM	3154	0.0	1500	1500	1654	16.11+	400	66.8	13.6	33.2
8-9 AM	2827	0.0	1500	1500	1327	16.14+	400	67.2	13.6	33.2
9-10 AM	2457	0.0	1500	1508	949	16.17+	399	67.7	13.6	32.5
10-11 AM	2596	0.0	1500	1500	1096	16.18+	400	67.5	13.6	32.7
11AM-NOON	2863	0.0	1500	1500	1363	16.16+	400	67.2	13.6	32.7
NOON-1PM	3003	0.0	1500	1500	1503	16.15+	400	67.0	13.6	32.7
1-2 PM	3199	0.0	1500	1500	1699	16.14+	400	66.8	13.6	32.7
2-3 PM	4383	0.0	1500	1500	2883	15.74+	400	60.9	13.6	32.7
3-4 PM	5620	0.0	1500	1500	4120	15.01+	400	52.5	13.6	32.7
4-5 PM	6566	0.0	1500	1500	5066	14.27+	400	46.0	13.6	32.7
5-6 PM	5969	0.0	1500	1500	4469	14.76+	400	50.1	13.6	32.7
6-7 PM	3499	0.0	1500	1500	1999	16.12+	400	66.4	13.6	32.7
7-8 PM	2251	0.0	1500	1576	675	15.96+	392	67.9	13.8	31.7
8-9 PM	1851	0.0	1499	1500	351	16.35+	399	68.4	13.5	30.8
9-10 PM	1613	0.0	1500	1518	94	16.20+	395	68.7	13.7	30.8
10-11 PM	1245	0.0	1499	1245	0	11.98	299	69.2	17.3	31.7
11PM-MID	761	0.0	1500	761	0	0.97	16	69.8	56.1	42.5

+ INDICATES QUEUEING EXCEEDS USER-SPECIFIED MAXIMUM LIMIT

BREAKDOWN DURATION (MINS)	0
RANGE OF QUEUE DELAY - MIN (VEH-H) MAX	0.0
AV BREAKDOWNS PER DAY	0.00
AV QUEUE DELAY/DAY (VEH-H)	0.0
AV TOTAL DELAY/DAY (VEH-H)	0.0

BREAKDOWN DURATION (MINS)	0
RANGE OF QUEUE DELAY - MIN (VEH-H) MAX	0
AV BREAKDOWNS PER DAY	0
AV QUEUE DELAY/DAY (VEH-H)	0
AV TOTAL DELAY/DAY (VEH-H)	0

MAIN ROUTE WITHOUT WORKS	0.0444
MAIN ROUTE WITH WORKS	0.0199
'DIVERSION'	0.0523

PIA: Personal Injury Accidents

ROAD USER COSTS PER DAY	\$189,697
CONGESTED HOURS PER DAY*	16

*Delays Exceeding User-Specified Maximum

**USH 41/45: CTH Q TO STH 145 (WAUKESHA AND MILWAUKEE COUNTIES)
 CONTINUOUS (24 HOUR) 2 LANE CLOSURE
 NO DIVERSION ROUTE (MAX QUEUE METHOD)**

OCTOBER

Analyzed for 2009
 Construction Season

GRAPHICAL REPRESENTATION OF TRAFFIC MODEL INPUT AND OUTPUT
MON-THUR NORTHBOUND DIRECTION

