

**IH 94: CTH O TO STH 100 (WAUKESHA COUNTY)
CONTINUOUS (24 HOUR) CLOSURE
NO DIVERSION ROUTE (MAX QUEUE METHOD)**

OCTOBER

Analyzed for 2009
Construction Season

SUMMARY OF TRAFFIC MODEL OUTPUT

SATURDAY WESTBOUND DIRECTION

TIME OF DAY	FLOWS AND CAPACITY IN VEH/HR						AVERAGE SPEEDS IN MPH			
	MAIN ROUTE		SITE CAPA CITY	FLOW		AV.DEL PER VEH (MINS)	AVERAGE QUEUE (VEH)	MAIN ROUTE		SITE
	DEMAND FLOW	PCT HEAVY		MAIN ROUTE	'DIVER TED'			WITHOUT WORK ZONE	WITH WORK ZONE	
MID-1 AM	990	0.0	3000	990	0	0.35	0	69.5	61.4	49.7
1-2 AM	600	0.0	3000	600	0	0.36	0	70.0	61.7	49.7
2-3 AM	589	0.0	3000	589	0	0.36	0	70.0	61.7	49.7
3-4 AM	451	0.0	3000	451	0	0.36	0	70.2	61.8	49.7
4-5 AM	568	0.0	3000	568	0	0.36	0	70.0	61.7	49.7
5-6 AM	1054	0.0	3000	1054	0	0.35	0	69.4	61.4	49.7
6-7 AM	1673	0.0	3000	1673	0	0.34	0	68.7	61.0	49.7
7-8 AM	2450	0.0	2999	2450	0	0.41	0	67.7	58.8	46.5
8-9 AM	3320	0.0	2999	3320	0	2.48	118	66.6	35.3	37.3
9-10 AM	3771	0.0	3000	3535	236	11.92+	648	65.1	13.7	37.3
10-11 AM	4077	0.0	3000	3001	1076	16.01+	854	63.0	11.7	37.3
11AM-NOON	4492	0.0	2999	3024	1468	16.21+	874	60.2	11.6	37.3
NOON-1PM	4750	0.0	2999	3000	1750	16.28+	884	58.4	11.5	37.3
1-2 PM	4600	0.0	3000	3000	1600	16.30+	882	59.4	11.6	37.3
2-3 PM	4471	0.0	3000	2991	1480	16.23+	875	60.3	11.6	37.3
3-4 PM	4146	0.0	3000	2983	1163	16.02+	856	62.5	11.7	37.3
4-5 PM	4154	0.0	2999	3002	1152	16.02+	856	62.5	11.7	37.3
5-6 PM	3565	0.0	3000	2998	567	16.12+	849	66.3	11.7	37.3
6-7 PM	3621	0.0	2999	2999	623	16.11+	850	66.1	11.7	37.3
7-8 PM	2652	0.0	2999	2652	0	13.69+	720	67.4	12.7	37.3
8-9 PM	2311	0.0	2999	2311	0	2.57	194	67.9	35.0	45.0
9-10 PM	2291	0.0	3000	2291	0	0.33	0	67.9	60.6	49.7
10-11 PM	2494	0.0	3000	2494	0	0.40	0	67.6	59.1	46.9
11PM-MID	1596	0.0	3000	1596	0	0.34	0	68.7	61.0	49.7

+ INDICATES QUEUEING EXCEEDS USER-SPECIFIED MAXIMUM LIMIT

----- SITE BREAKDOWN DELAYS -----	
BREAKDOWN DURATION (MINS)	0
RANGE OF QUEUE DELAY - MIN (VEH-H) MAX	0.0
AV BREAKDOWNS PER DAY	0.00
AV QUEUE DELAY/DAY (VEH-H)	0.0
AV TOTAL DELAY/DAY (VEH-H)	0.0

----- SITE ACCIDENT DELAYS -----	
BREAKDOWN DURATION (MINS)	0
RANGE OF QUEUE DELAY - MIN (VEH-H) MAX	0
AV BREAKDOWNS PER DAY	0
AV QUEUE DELAY/DAY (VEH-H)	0
AV TOTAL DELAY/DAY (VEH-H)	0

AVERAGE ACCIDENT NUMBERS (PIA/DAY)	
MAIN ROUTE WITHOUT WORKS	0.0319
MAIN ROUTE WITH WORKS	0.0229
'DIVERSION'	0.0127
PIA: Personal Injury Accidents	
IMPACTS ON ROAD USERS	
ROAD USER COSTS PER DAY	\$199,268
CONGESTED HOURS PER DAY*	11

*Delays Exceeding User-Specified Maximum

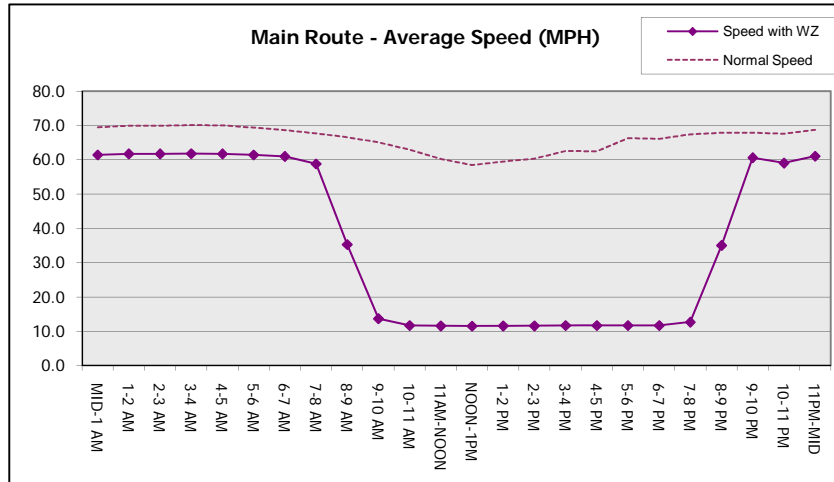
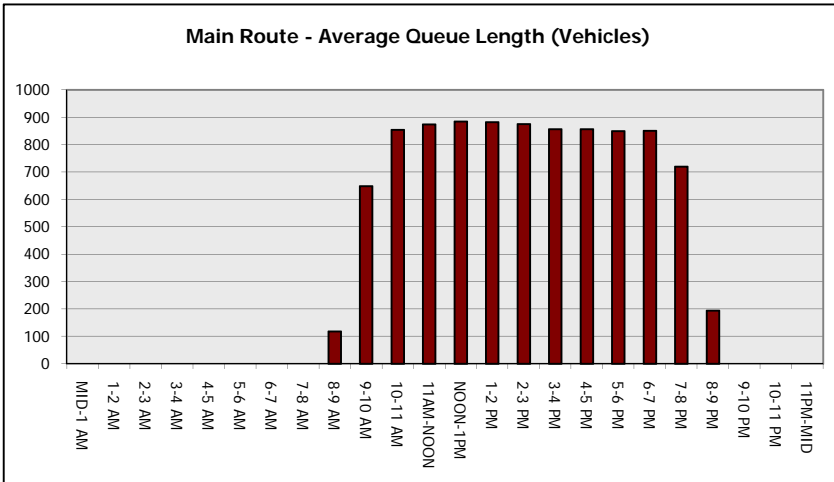
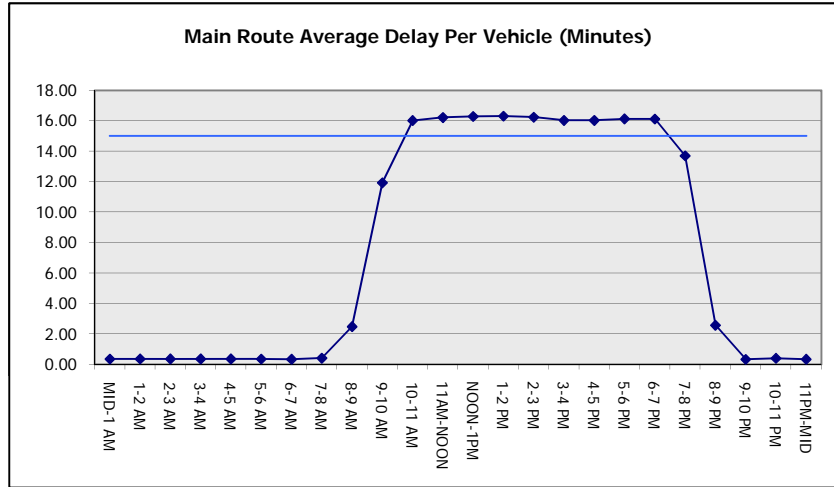
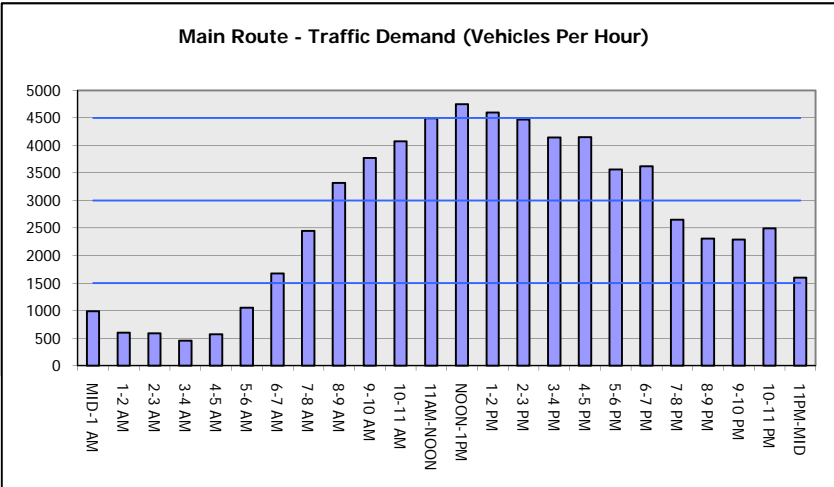
**IH 94: CTH O TO STH 100 (WAUKESHA COUNTY)
CONTINUOUS (24 HOUR) CLOSURE
NO DIVERSION ROUTE (MAX QUEUE METHOD)**

OCTOBER

Analyzed for 2009
Construction Season

GRAPHICAL REPRESENTATION OF TRAFFIC MODEL INPUT AND OUTPUT

SATURDAY WESTBOUND DIRECTION



IH 94: CTH O TO STH 100 (WAUKESHA COUNTY) CONTINUOUS (24 HOUR) CLOSURE NO DIVERSION ROUTE (MAX QUEUE METHOD)	OCTOBER
	Analyzed for 2009 Construction Season

SUMMARY OF TRAFFIC MODEL OUTPUT

SATURDAY EASTBOUND DIRECTION

TIME OF DAY	FLOWS AND CAPACITY IN VEH/HR						AVERAGE SPEEDS IN MPH			
	MAIN ROUTE		SITE CAPA CITY	FLOW		AV.DEL PER VEH (MINS)	AVERAGE QUEUE (VEH)	MAIN ROUTE		SITE
	DEMAND FLOW	PCT HEAVY		MAIN ROUTE	'DIVER TED'			WITHOUT WORK ZONE	WITH WORK ZONE	
MID-1 AM	1057	0.0	3000	1057	0	0.35	0	69.4	61.4	49.7
1-2 AM	530	0.0	3000	530	0	0.36	0	70.0	61.7	49.7
2-3 AM	411	0.0	3000	411	0	0.36	0	70.2	61.8	49.7
3-4 AM	276	0.0	3000	276	0	0.36	0	70.2	61.8	49.7
4-5 AM	383	0.0	3000	383	0	0.36	0	70.2	61.8	49.7
5-6 AM	874	0.0	3000	874	0	0.35	0	69.7	61.5	49.7
6-7 AM	1437	0.0	3000	1437	0	0.34	0	68.9	61.2	49.7
7-8 AM	1952	0.0	2999	1952	0	0.34	0	68.3	60.8	49.7
8-9 AM	2898	0.0	2999	2898	0	0.78	8	67.1	52.4	39.6
9-10 AM	3342	0.0	3000	3342	0	3.70	185	66.6	28.6	37.3
10-11 AM	3600	0.0	3000	3538	62	12.08+	647	66.3	13.5	37.3
11AM-NOON	4029	0.0	2999	2950	1079	16.11+	858	63.3	11.7	37.3
NOON-1PM	4355	0.0	2999	3003	1352	16.13+	867	61.1	11.6	37.3
1-2 PM	4277	0.0	3000	2994	1283	16.09+	863	61.7	11.6	37.3
2-3 PM	4387	0.0	2999	3007	1380	16.15+	869	60.9	11.6	37.3
3-4 PM	4352	0.0	3000	2998	1354	16.14+	867	61.1	11.6	37.3
4-5 PM	4482	0.0	3000	3010	1472	16.21+	874	60.2	11.6	37.3
5-6 PM	4752	0.0	2999	3000	1752	16.27+	884	58.4	11.5	37.3
6-7 PM	4382	0.0	3000	2984	1398	16.18+	870	60.9	11.6	37.3
7-8 PM	3510	0.0	3000	2996	514	16.11+	849	66.4	11.7	37.3
8-9 PM	2652	0.0	2999	2652	0	13.43+	705	67.4	12.7	37.3
9-10 PM	2837	0.0	3000	2837	0	8.62	437	67.2	16.3	37.3
10-11 PM	2361	0.0	2999	2361	0	1.74	116	67.8	41.5	45.1
11PM-MID	1753	0.0	3000	1753	0	0.34	0	68.6	60.9	49.7

+ INDICATES QUEUEING EXCEEDS USER-SPECIFIED MAXIMUM LIMIT

----- SITE BREAKDOWN DELAYS -----	
BREAKDOWN DURATION (MINS)	0
RANGE OF QUEUE DELAY - MIN (VEH-H) MAX	0.0
AV BREAKDOWNS PER DAY	0.00
AV QUEUE DELAY/DAY (VEH-H)	0.0
AV TOTAL DELAY/DAY (VEH-H)	0.0

----- SITE ACCIDENT DELAYS -----	
BREAKDOWN DURATION (MINS)	0
RANGE OF QUEUE DELAY - MIN (VEH-H) MAX	0
AV BREAKDOWNS PER DAY	0
AV QUEUE DELAY/DAY (VEH-H)	0
AV TOTAL DELAY/DAY (VEH-H)	0

AVERAGE ACCIDENT NUMBERS (PIA/DAY)	
MAIN ROUTE WITHOUT WORKS	0.0320
MAIN ROUTE WITH WORKS	0.0228
'DIVERSION'	0.0133

PIA: Personal Injury Accidents

ECONOMIC IMPACT ON ROAD USERS	
ROAD USER COSTS PER DAY	\$209,120
CONGESTED HOURS PER DAY*	11

*Delays Exceeding User-Specified Maximum

**IH 94: CTH O TO STH 100 (WAUKESHA COUNTY)
CONTINUOUS (24 HOUR) CLOSURE
NO DIVERSION ROUTE (MAX QUEUE METHOD)**

OCTOBER

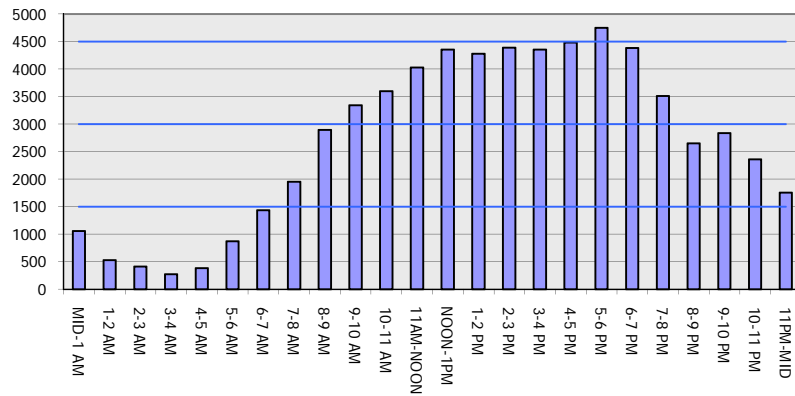
Analyzed for 2009
Construction Season

GRAPHICAL REPRESENTATION OF TRAFFIC MODEL INPUT AND OUTPUT

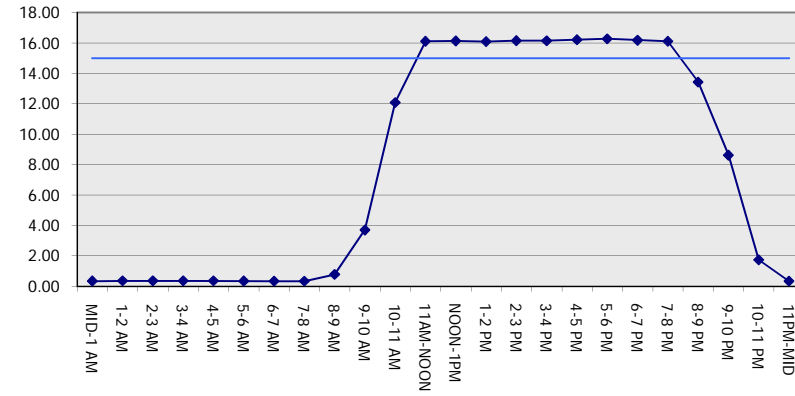
SATURDAY

EASTBOUND DIRECTION

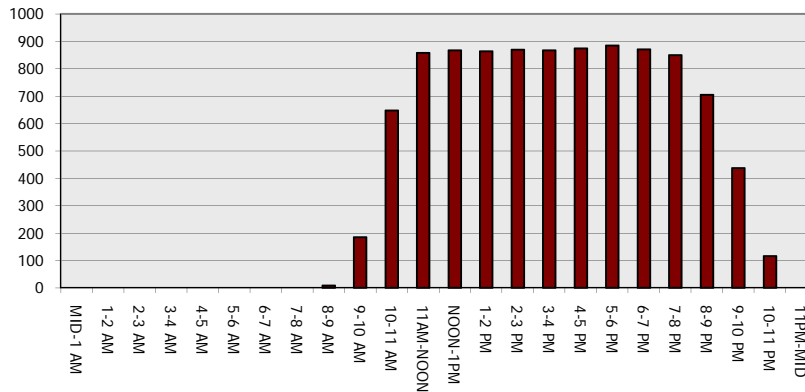
Main Route - Traffic Demand (Vehicles Per Hour)



Main Route Average Delay Per Vehicle (Minutes)



Main Route - Average Queue Length (Vehicles)



Main Route - Average Speed (MPH)

