

<b>IH 94: CTH O TO STH 100 (WAUKESHA COUNTY)                  CONTINUOUS (24 HOUR) 2 LANE CLOSURE                  NO DIVERSION ROUTE (MAX QUEUE METHOD)</b>	<b>OCTOBER</b>
	Analyzed for 2009 Construction Season

**SUMMARY OF TRAFFIC MODEL OUTPUT**

MON-THUR                      WESTBOUND DIRECTION

TIME OF DAY	FLOWS AND CAPACITY IN VEH/HR							AVERAGE SPEEDS IN MPH			
	MAIN ROUTE		SITE CAPA CITY	FLOW		AV.DEL PER VEH (MINS)	AVERAGE QUEUE (VEH)	MAIN ROUTE		SITE	
	DEMAND FLOW	PCT HEAVY		MAIN ROUTE	'DIVER TED'			WITHOUT WORK ZONE	WITH WORK ZONE		
MID-1 AM	487	0.0	1500	487	0	0.53	0	70.1	58.4	43.5	
1-2 AM	290	0.0	1500	290	0	0.51	0	70.2	58.9	44.4	
2-3 AM	272	0.0	1500	272	0	0.51	0	70.2	58.7	44.1	
3-4 AM	345	0.0	1500	345	0	0.56	0	69.9	57.8	42.7	
4-5 AM	713	0.0	1500	713	0	4.39	155	68.2	26.1	30.8	
5-6 AM	2019	0.0	1500	2019	0	15.98+	400	63.2	9.8	33.5	
6-7 AM	4050	0.0	1500	1500	2550	15.63+	400	56.6	9.8	33.5	
7-8 AM	5016	0.0	1500	1500	3516	15.71+	400	57.9	9.8	33.5	
8-9 AM	4828	0.0	1500	1500	3328	16.10+	400	65.9	9.8	33.5	
9-10 AM	3654	0.0	1500	1500	2154	16.12+	400	66.4	9.8	33.5	
10-11 AM	3495	0.0	1500	1500	1995	16.04+	400	64.6	9.8	33.5	
11AM-NOON	3846	0.0	1500	1500	2346	15.95+	400	62.5	9.8	33.5	
NOON-1PM	4152	0.0	1500	1500	2652	15.90+	400	61.5	9.8	33.5	
1-2 PM	4292	0.0	1500	1500	2792	15.69+	400	57.6	9.8	33.5	
2-3 PM	4876	0.0	1500	1500	3376	15.31+	400	51.5	9.8	33.5	
3-4 PM	5766	0.0	1500	1500	4266	15.36+	400	52.2	9.8	33.5	
4-5 PM	5664	0.0	1500	1500	4164	15.45+	400	53.6	9.8	33.5	
5-6 PM	5454	0.0	1500	1500	3954	15.87+	400	60.9	9.8	33.5	
6-7 PM	4386	0.0	1500	1500	2886	15.96+	395	67.1	9.9	33.5	
7-8 PM	2910	0.0	1500	1439	1471	16.34+	399	67.9	9.7	30.8	
8-9 PM	2270	0.0	1499	1500	770	16.24+	397	68.2	9.8	30.8	
9-10 PM	2039	0.0	1500	1470	569	15.37+	374	68.9	10.3	30.8	
10-11 PM	1476	0.0	1499	1391	85	3.37	130	69.5	30.7	37.3	
11PM-MID	1016	0.0	1499	1016	0						

+ INDICATES QUEUEING EXCEEDS USER-SPECIFIED MAXIMUM LIMIT

*----- SITE BREAKDOWN DELAYS -----*	
BREAKDOWN DURATION (MINS)	0
RANGE OF QUEUE DELAY - MIN (VEH-H) MAX	0.0
AV BREAKDOWNS PER DAY	0.00
AV QUEUE DELAY/DAY (VEH-H)	0.0
AV TOTAL DELAY/DAY (VEH-H)	0.0

*----- SITE ACCIDENT DELAYS -----*	
BREAKDOWN DURATION (MINS)	0
RANGE OF QUEUE DELAY - MIN (VEH-H) MAX	0
AV BREAKDOWNS PER DAY	0
AV QUEUE DELAY/DAY (VEH-H)	0
AV TOTAL DELAY/DAY (VEH-H)	0

AVERAGE ACCIDENT NUMBERS (PIA/DAY)	
MAIN ROUTE WITHOUT WORKS	0.0362
MAIN ROUTE WITH WORKS	0.0130
'DIVERSION'	0.0490
PIA: Personal Injury Accidents	
IMPACTS ON ROAD USERS	
ROAD USER COSTS PER DAY	\$236,516
CONGESTED HOURS PER DAY*	17

\*Delays Exceeding User-Specified Maximum

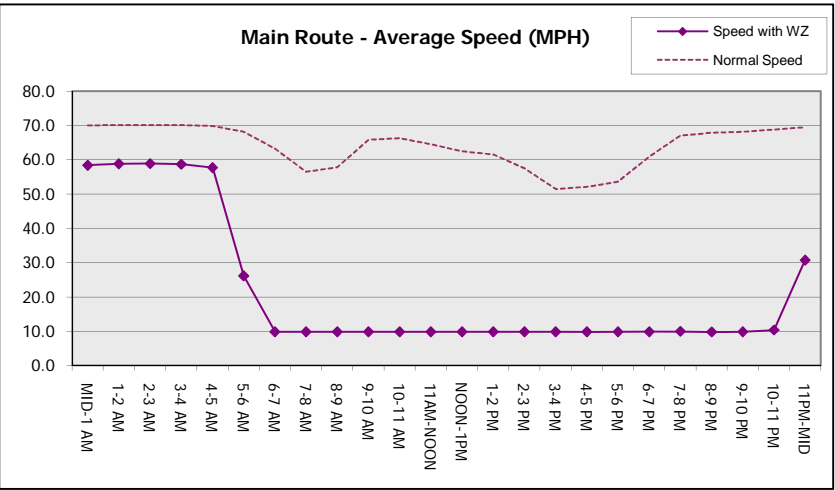
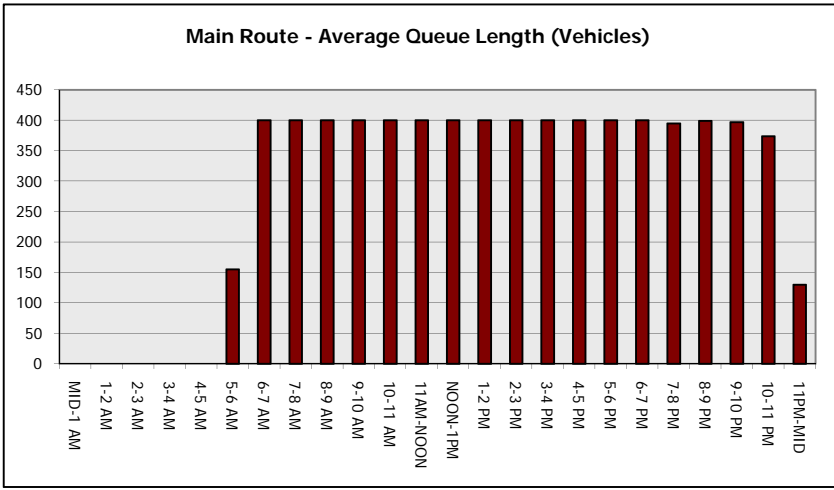
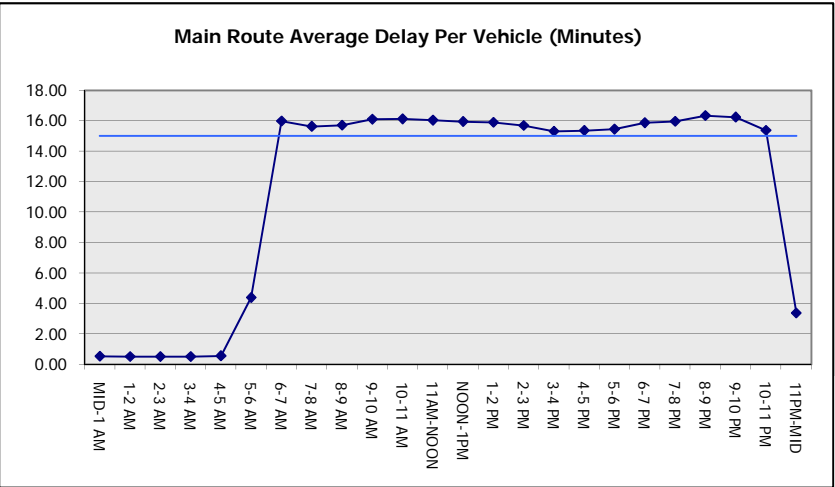
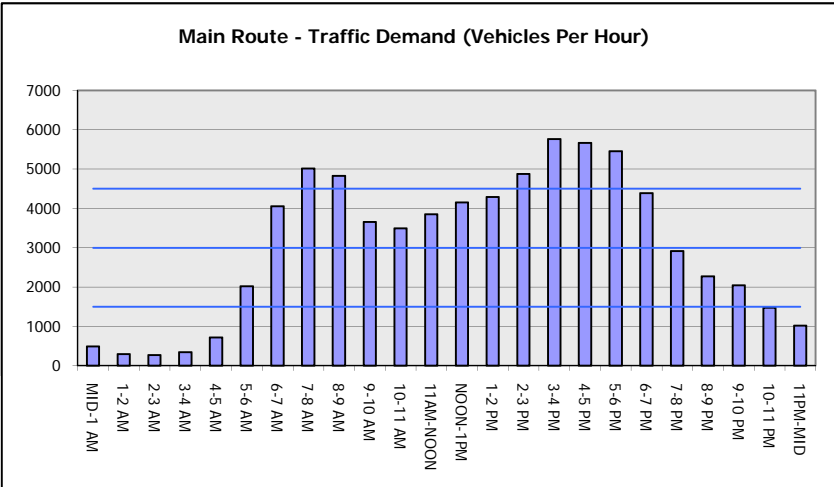
**IH 94: CTH O TO STH 100 (WAUKESHA COUNTY)  
CONTINUOUS (24 HOUR) 2 LANE CLOSURE  
NO DIVERSION ROUTE (MAX QUEUE METHOD)**

**OCTOBER**

Analyzed for 2009  
Construction Season

**GRAPHICAL REPRESENTATION OF TRAFFIC MODEL INPUT AND OUTPUT**

**MON-THUR WESTBOUND DIRECTION**



<b>IH 94: CTH O TO STH 100 (WAUKESHA COUNTY)</b> <b>CONTINUOUS (24 HOUR) 2 LANE CLOSURE</b> <b>NO DIVERSION ROUTE (MAX QUEUE METHOD)</b>	<b>OCTOBER</b>
	Analyzed for 2009 Construction Season

**SUMMARY OF TRAFFIC MODEL OUTPUT**

MON-THUR                      EASTBOUND DIRECTION

TIME OF DAY	FLOWS AND CAPACITY IN VEH/HR							AVERAGE SPEEDS IN MPH			
	MAIN ROUTE		SITE CAPA CITY	FLOW		AV.DEL PER VEH (MINS)	AVERAGE QUEUE (VEH)	MAIN ROUTE		SITE	
	DEMAND FLOW	PCT HEAVY		MAIN ROUTE	'DIVER TED'			WITHOUT WORK ZONE	WITH WORK ZONE		
MID-1 AM	481	0.0	1500	481	0	0.53	0	70.1	58.4	43.6	
1-2 AM	302	0.0	1500	302	0	0.51	0	70.2	58.9	44.3	
2-3 AM	257	0.0	1500	257	0	0.50	0	70.2	58.9	44.5	
3-4 AM	320	0.0	1500	320	0	0.51	0	70.2	58.8	44.2	
4-5 AM	614	0.0	1500	614	0	0.55	0	70.0	58.1	43.1	
5-6 AM	2068	0.0	1499	2068	0	3.44	144	68.2	30.2	30.8	
6-7 AM	5066	0.0	1500	1500	3566	15.45+	400	56.3	9.9	37.1	
7-8 AM	5380	0.0	1500	1500	3880	15.32+	400	54.1	9.9	37.1	
8-9 AM	5059	0.0	1500	1500	3559	15.45+	400	56.3	9.9	37.1	
9-10 AM	4289	0.0	1499	1483	2807	15.69+	398	61.5	9.9	37.1	
10-11 AM	3809	0.0	1499	1499	2310	15.94+	399	64.8	9.9	35.8	
11AM-NOON	3964	0.0	1499	1500	2464	15.90+	400	63.8	9.9	35.6	
NOON-1PM	4151	0.0	1500	1500	2651	15.84+	400	62.5	9.9	35.6	
1-2 PM	4223	0.0	1500	1500	2723	15.82+	400	62.0	9.9	35.6	
2-3 PM	4849	0.0	1500	1500	3349	15.59+	400	57.8	9.9	35.6	
3-4 PM	5524	0.0	1500	1500	4024	15.31+	400	53.1	9.9	35.6	
4-5 PM	5528	0.0	1500	1500	4028	15.31+	400	53.1	9.9	35.6	
5-6 PM	5237	0.0	1500	1500	3737	15.44+	400	55.1	9.9	35.6	
6-7 PM	3902	0.0	1500	1481	2422	15.87+	398	64.2	9.9	35.6	
7-8 PM	2810	0.0	1499	1457	1353	16.07+	396	67.3	9.9	32.9	
8-9 PM	2489	0.0	1500	1487	1002	16.24+	398	67.6	9.8	31.5	
9-10 PM	2309	0.0	1499	1479	830	16.26+	398	67.9	9.8	30.8	
10-11 PM	1630	0.0	1499	1436	194	16.09+	392	68.7	9.9	30.8	
11PM-MID	1059	0.0	1499	1059	0	6.00	207	69.4	21.4	35.9	

+ INDICATES QUEUEING EXCEEDS USER-SPECIFIED MAXIMUM LIMIT

BREAKDOWN DURATION (MINS)	0
RANGE OF QUEUE DELAY - MIN (VEH-H) MAX	0.0
AV BREAKDOWNS PER DAY	0.00
AV QUEUE DELAY/DAY (VEH-H)	0.0
AV TOTAL DELAY/DAY (VEH-H)	0.0

BREAKDOWN DURATION (MINS)	0
RANGE OF QUEUE DELAY - MIN (VEH-H) MAX	0
AV BREAKDOWNS PER DAY	0
AV QUEUE DELAY/DAY (VEH-H)	0
AV TOTAL DELAY/DAY (VEH-H)	0

MAIN ROUTE WITHOUT WORKS	0.0372
MAIN ROUTE WITH WORKS	0.0130
'DIVERSION'	0.0513

PIA: Personal Injury Accidents

ROAD USER COSTS PER DAY	\$241,992
CONGESTED HOURS PER DAY*	17

\*Delays Exceeding User-Specified Maximum

**IH 94: CTH 0 TO STH 100 (WAUKESHA COUNTY)  
CONTINUOUS (24 HOUR) 2 LANE CLOSURE  
NO DIVERSION ROUTE (MAX QUEUE METHOD)**

**OCTOBER**

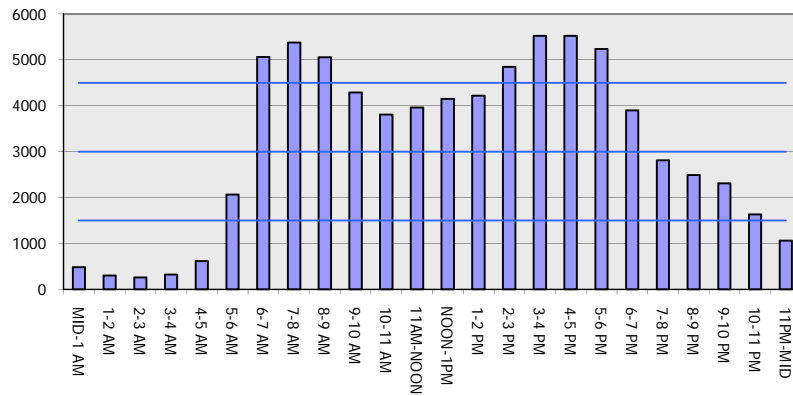
Analyzed for 2009  
Construction Season

**GRAPHICAL REPRESENTATION OF TRAFFIC MODEL INPUT AND OUTPUT**

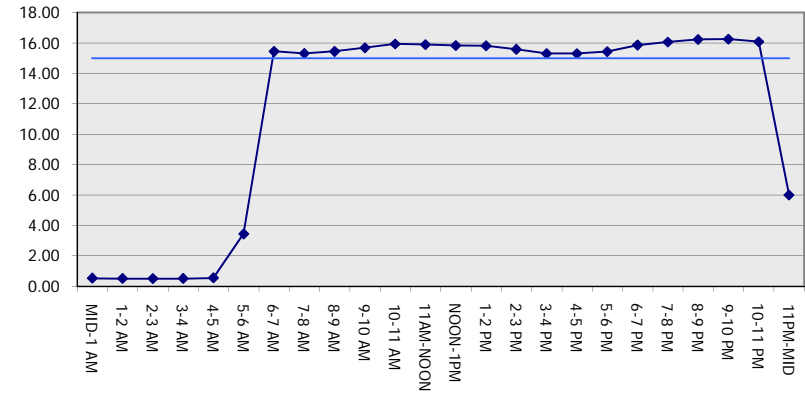
**MON-THUR**

**EASTBOUND DIRECTION**

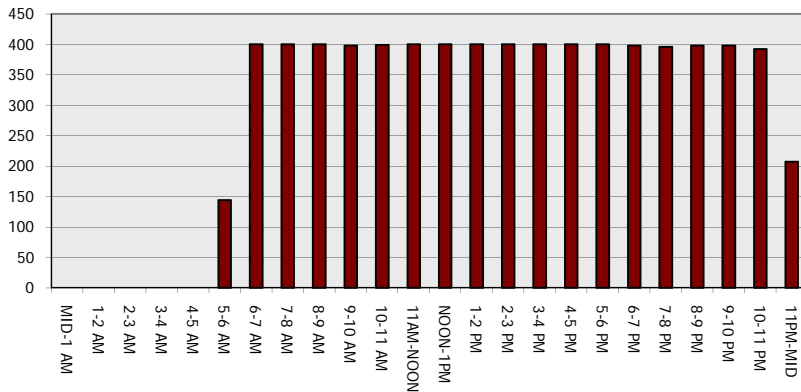
**Main Route - Traffic Demand (Vehicles Per Hour)**



**Main Route Average Delay Per Vehicle (Minutes)**



**Main Route - Average Queue Length (Vehicles)**



**Main Route - Average Speed (MPH)**

