

IH 94: CTH O TO STH 100 (WAUKESHA COUNTY) CONTINUOUS (24 HOUR) CLOSURE NO DIVERSION ROUTE (MAX QUEUE METHOD)	OCTOBER
	Analyzed for 2009 Construction Season

SUMMARY OF TRAFFIC MODEL OUTPUT

MON-THUR WESTBOUND DIRECTION

TIME OF DAY	FLOWS AND CAPACITY IN VEH/HR						AVERAGE SPEEDS IN MPH			
	MAIN ROUTE		SITE CAPA CITY	FLOW		AV.DEL PER VEH (MINS)	AVERAGE QUEUE (VEH)	MAIN ROUTE		SITE
	DEMAND FLOW	PCT HEAVY		MAIN ROUTE	'DIVER TED'			WITHOUT WORK ZONE	WITH WORK ZONE	
MID-1 AM	487	0.0	3000	487	0	0.36	0	70.1	61.8	49.7
1-2 AM	290	0.0	3000	290	0	0.36	0	70.2	61.8	49.7
2-3 AM	272	0.0	3000	272	0	0.36	0	70.2	61.8	49.7
3-4 AM	345	0.0	3000	345	0	0.36	0	70.2	61.8	49.7
4-5 AM	713	0.0	3000	713	0	0.36	0	69.9	61.6	49.7
5-6 AM	2019	0.0	2999	2019	0	0.35	0	68.2	60.4	49.1
6-7 AM	4050	0.0	2999	4050	0	6.45+	431	63.2	20.7	37.3
7-8 AM	5016	0.0	3000	2885	2131	15.98+	875	56.6	11.6	37.3
8-9 AM	4828	0.0	2999	2960	1868	16.17+	881	57.9	11.6	37.3
9-10 AM	3654	0.0	3000	2987	667	16.10+	850	65.9	11.7	37.3
10-11 AM	3495	0.0	2999	2991	504	16.11+	849	66.4	11.7	37.3
11AM-NOON	3846	0.0	2999	2994	852	16.05+	851	64.6	11.7	37.3
NOON-1PM	4152	0.0	2999	2992	1159	16.03+	856	62.5	11.7	37.3
1-2 PM	4292	0.0	3000	3009	1282	16.09+	863	61.5	11.6	37.3
2-3 PM	4876	0.0	2999	3005	1871	16.20+	884	57.6	11.5	37.3
3-4 PM	5766	0.0	3000	3000	2766	15.74+	884	51.5	11.5	37.3
4-5 PM	5664	0.0	3000	3000	2664	15.80+	884	52.2	11.5	37.3
5-6 PM	5454	0.0	3000	3000	2454	15.92+	884	53.6	11.5	37.3
6-7 PM	4386	0.0	3000	2990	1396	16.17+	869	60.9	11.6	37.3
7-8 PM	2910	0.0	3000	2820	90	15.41+	810	67.1	12.0	37.3
8-9 PM	2270	0.0	2999	2270	0	5.07	347	67.9	24.0	43.0
9-10 PM	2039	0.0	3000	2039	0	0.33	0	68.2	60.7	49.7
10-11 PM	1476	0.0	3000	1476	0	0.34	0	68.9	61.1	49.7
11PM-MID	1016	0.0	3000	1016	0	0.35	0	69.5	61.4	49.7

+ INDICATES QUEUEING EXCEEDS USER-SPECIFIED MAXIMUM LIMIT

----- SITE BREAKDOWN DELAYS -----	
BREAKDOWN DURATION (MINS)	0
RANGE OF QUEUE DELAY - MIN (VEH-H) MAX	0.0
AV BREAKDOWNS PER DAY	0.00
AV QUEUE DELAY/DAY (VEH-H)	0.0
AV TOTAL DELAY/DAY (VEH-H)	0.0

----- SITE ACCIDENT DELAYS -----	
BREAKDOWN DURATION (MINS)	0
RANGE OF QUEUE DELAY - MIN (VEH-H) MAX	0
AV BREAKDOWNS PER DAY	0
AV QUEUE DELAY/DAY (VEH-H)	0
AV TOTAL DELAY/DAY (VEH-H)	0

AVERAGE ACCIDENT NUMBERS (PIA/DAY)	
MAIN ROUTE WITHOUT WORKS	0.0362
MAIN ROUTE WITH WORKS	0.0229
'DIVERSION'	0.0225
<small>PIA: Personal Injury Accidents</small>	
IMPACTS ON ROAD USERS	
ROAD USER COSTS PER DAY	\$214,489
CONGESTED HOURS PER DAY*	14

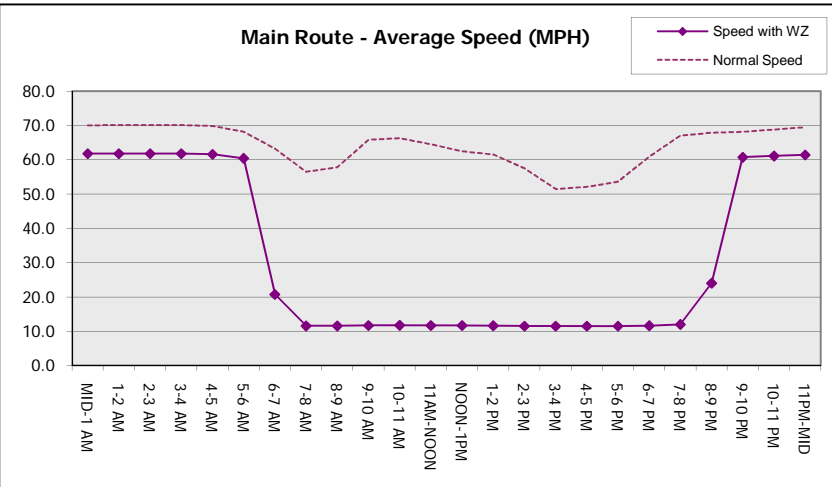
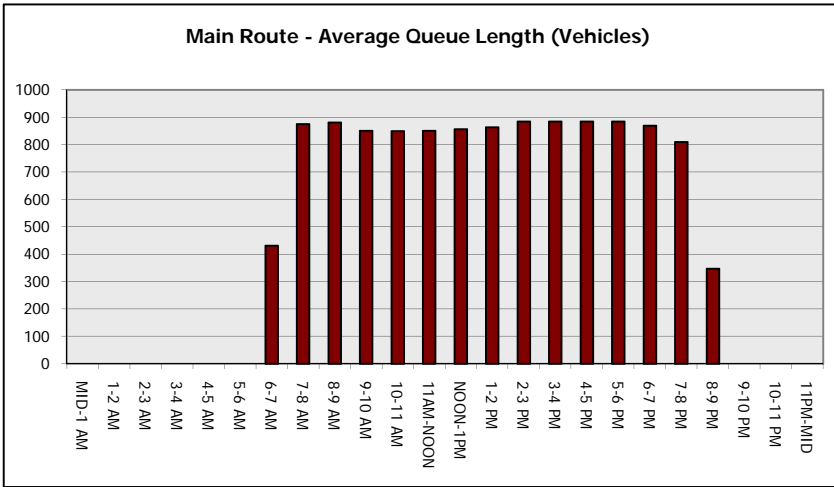
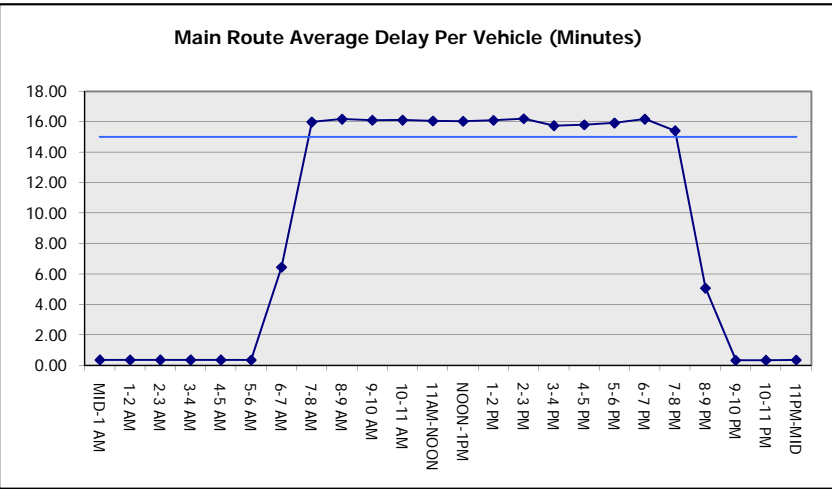
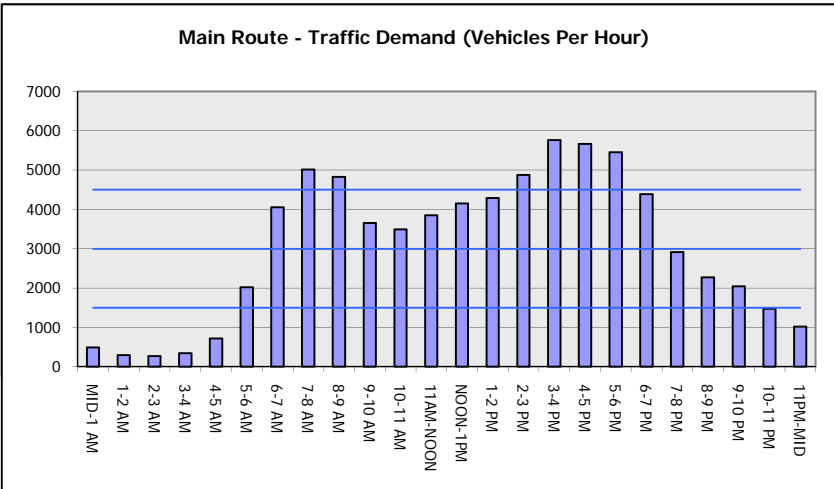
*Delays Exceeding User-Specified Maximum

**IH 94: CTH O TO STH 100 (WAUKESHA COUNTY)
CONTINUOUS (24 HOUR) CLOSURE
NO DIVERSION ROUTE (MAX QUEUE METHOD)**

OCTOBER
Analyzed for 2009
Construction Season

GRAPHICAL REPRESENTATION OF TRAFFIC MODEL INPUT AND OUTPUT

MON-THUR WESTBOUND DIRECTION



IH 94: CTH O TO STH 100 (WAUKESHA COUNTY) CONTINUOUS (24 HOUR) CLOSURE NO DIVERSION ROUTE (MAX QUEUE METHOD)	OCTOBER
	Analyzed for 2009 Construction Season

SUMMARY OF TRAFFIC MODEL OUTPUT

MON-THUR EASTBOUND DIRECTION

TIME OF DAY	FLOWS AND CAPACITY IN VEH/HR							AVERAGE SPEEDS IN MPH			
	MAIN ROUTE		SITE CAPA CITY	FLOW		AV.DEL PER VEH (MINS)	AVERAGE QUEUE (VEH)	MAIN ROUTE		SITE	
	DEMAND FLOW	PCT HEAVY		MAIN ROUTE	'DIVER TED'			WITHOUT WORK ZONE	WITH WORK ZONE		
MID-1 AM	481	0.0	3000	481	0	0.36	0	70.1	61.8	49.7	
1-2 AM	302	0.0	3000	302	0	0.36	0	70.2	61.8	49.7	
2-3 AM	257	0.0	3000	257	0	0.36	0	70.2	61.8	49.7	
3-4 AM	320	0.0	3000	320	0	0.36	0	70.2	61.8	49.7	
4-5 AM	614	0.0	3000	614	0	0.36	0	70.0	61.7	49.7	
5-6 AM	2068	0.0	2999	2068	0	0.41	0	68.2	59.2	46.8	
6-7 AM	5066	0.0	2999	3826	1240	11.04+	648	56.3	14.2	37.3	
7-8 AM	5380	0.0	3000	3000	2379	15.96+	884	54.1	11.5	37.3	
8-9 AM	5059	0.0	3000	3012	2048	16.10+	883	56.3	11.6	37.3	
9-10 AM	4289	0.0	3000	3020	1270	16.08+	862	61.5	11.6	37.3	
10-11 AM	3809	0.0	3000	2998	811	16.06+	851	64.8	11.7	37.3	
11AM-NOON	3964	0.0	3000	2999	965	16.02+	851	63.8	11.7	37.3	
NOON-1PM	4151	0.0	2999	3002	1148	16.00+	855	62.5	11.7	37.3	
1-2 PM	4223	0.0	3000	3007	1216	16.04+	859	62.0	11.7	37.3	
2-3 PM	4849	0.0	2999	3008	1841	16.21+	883	57.8	11.6	37.3	
3-4 PM	5524	0.0	3000	3000	2524	15.88+	884	53.1	11.5	37.3	
4-5 PM	5528	0.0	3000	3000	2528	15.87+	884	53.1	11.5	37.3	
5-6 PM	5237	0.0	3000	3000	2236	16.03+	884	55.1	11.5	37.3	
6-7 PM	3902	0.0	3000	2987	916	16.09+	855	64.2	11.7	37.3	
7-8 PM	2810	0.0	2999	2791	19	15.07+	791	67.3	12.0	37.3	
8-9 PM	2489	0.0	2999	2489	0	7.49	410	67.6	18.3	38.9	
9-10 PM	2309	0.0	3000	2309	0	0.57	16	67.9	56.1	48.6	
10-11 PM	1630	0.0	3000	1630	0	0.34	0	68.7	61.0	49.7	
11PM-MID	1059	0.0	3000	1059	0	0.35	0	69.4	61.4	49.7	

+ INDICATES QUEUEING EXCEEDS USER-SPECIFIED MAXIMUM LIMIT

BREAKDOWN DURATION (MINS)	0
RANGE OF QUEUE DELAY - MIN (VEH-H) MAX	0.0
AV BREAKDOWNS PER DAY	0.00
AV QUEUE DELAY/DAY (VEH-H)	0.0
AV TOTAL DELAY/DAY (VEH-H)	0.0

BREAKDOWN DURATION (MINS)	0
RANGE OF QUEUE DELAY - MIN (VEH-H) MAX	0
AV BREAKDOWNS PER DAY	0
AV QUEUE DELAY/DAY (VEH-H)	0
AV TOTAL DELAY/DAY (VEH-H)	0

MAIN ROUTE WITHOUT WORKS	0.0372
MAIN ROUTE WITH WORKS	0.0232
'DIVERSION'	0.0242

PIA: Personal Injury Accidents

ROAD USER COSTS PER DAY	\$224,066
CONGESTED HOURS PER DAY*	14

*Delays Exceeding User-Specified Maximum

**IH 94: CTH O TO STH 100 (WAUKESHA COUNTY)
CONTINUOUS (24 HOUR) CLOSURE
NO DIVERSION ROUTE (MAX QUEUE METHOD)**

OCTOBER

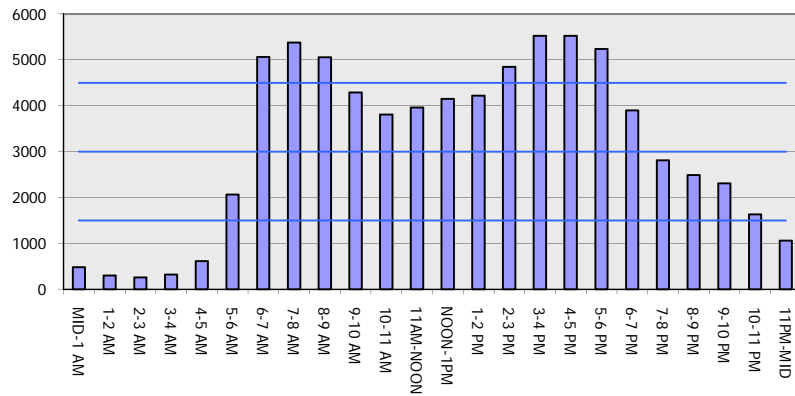
Analyzed for 2009
Construction Season

GRAPHICAL REPRESENTATION OF TRAFFIC MODEL INPUT AND OUTPUT

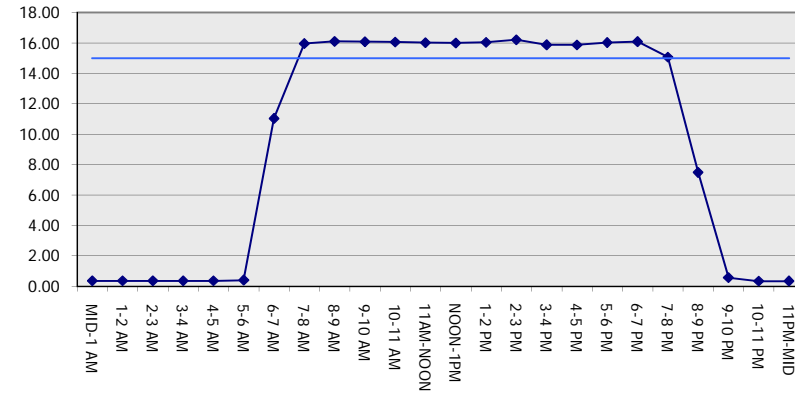
MON-THUR

EASTBOUND DIRECTION

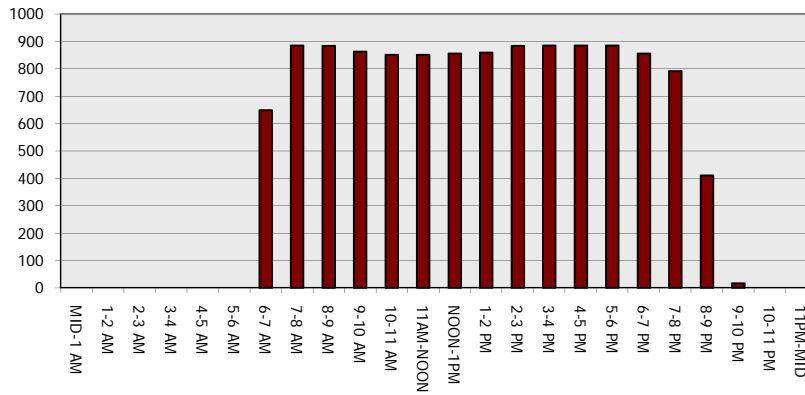
Main Route - Traffic Demand (Vehicles Per Hour)



Main Route Average Delay Per Vehicle (Minutes)



Main Route - Average Queue Length (Vehicles)



Main Route - Average Speed (MPH)

