

IH 94: CTH O TO STH 100 (WAUKESHA COUNTY) CONTINUOUS (24 HOUR) CLOSURE NO DIVERSION ROUTE (MAX QUEUE METHOD)	OCTOBER
	Analyzed for 2009 Construction Season

SUMMARY OF TRAFFIC MODEL OUTPUT

FRIDAY WESTBOUND DIRECTION

TIME OF DAY	FLOWS AND CAPACITY IN VEH/HR						AVERAGE SPEEDS IN MPH			
	MAIN ROUTE		SITE CAPA CITY	FLOW		AV.DEL PER VEH (MINS)	AVERAGE QUEUE (VEH)	MAIN ROUTE		SITE
	DEMAND FLOW	PCT HEAVY		MAIN ROUTE	'DIVER TED'			WITHOUT WORK ZONE	WITH WORK ZONE	
MID-1 AM	355	0.0	3000	355	0	0.36	0	70.2	61.8	49.7
1-2 AM	260	0.0	3000	260	0	0.36	0	70.2	61.8	49.7
2-3 AM	302	0.0	3000	302	0	0.36	0	70.2	61.8	49.7
3-4 AM	447	0.0	3000	447	0	0.36	0	70.2	61.8	49.7
4-5 AM	829	0.0	3000	829	0	0.35	0	69.7	61.5	49.7
5-6 AM	2169	0.0	2999	2169	0	0.41	0	68.1	59.1	46.7
6-7 AM	4576	0.0	2999	3828	748	8.92+	558	59.6	16.7	37.3
7-8 AM	5783	0.0	2999	3000	2783	15.73+	884	51.4	11.5	37.3
8-9 AM	5099	0.0	3000	3013	2086	16.07+	883	56.0	11.6	37.3
9-10 AM	4134	0.0	3000	3016	1118	16.01+	855	62.6	11.7	37.3
10-11 AM	4297	0.0	2999	3011	1286	16.09+	863	61.5	11.6	37.3
11AM-NOON	4756	0.0	2999	3008	1748	16.25+	883	58.4	11.6	37.3
NOON-1PM	5042	0.0	3000	3000	2042	16.13+	884	56.4	11.5	37.3
1-2 PM	5324	0.0	2999	3000	2324	15.99+	884	54.5	11.5	37.3
2-3 PM	5857	0.0	2999	3000	2857	15.68+	884	50.9	11.5	37.3
3-4 PM	6185	0.0	2999	3000	3185	15.47+	885	48.6	11.5	37.3
4-5 PM	5612	0.0	2999	3000	2612	15.83+	884	52.5	11.5	37.3
5-6 PM	5356	0.0	3000	3000	2356	15.97+	884	54.3	11.5	37.3
6-7 PM	5292	0.0	3000	3000	2292	16.00+	884	54.7	11.5	37.3
7-8 PM	3550	0.0	3000	2991	559	16.11+	849	66.3	11.7	37.3
8-9 PM	2444	0.0	2999	2444	0	11.51+	619	67.7	14.0	38.2
9-10 PM	2549	0.0	3000	2549	0	1.93	113	67.6	39.7	42.6
10-11 PM	2173	0.0	3000	2173	0	0.33	0	68.1	60.7	49.7
11PM-MID	1580	0.0	3000	1580	0	0.34	0	68.7	61.0	49.7

+ INDICATES QUEUEING EXCEEDS USER-SPECIFIED MAXIMUM LIMIT

----- SITE BREAKDOWN DELAYS -----	
BREAKDOWN DURATION (MINS)	0
RANGE OF QUEUE DELAY - MIN (VEH-H) MAX	0.0
AV BREAKDOWNS PER DAY	0.00
AV QUEUE DELAY/DAY (VEH-H)	0.0
AV TOTAL DELAY/DAY (VEH-H)	0.0

----- SITE ACCIDENT DELAYS -----	
BREAKDOWN DURATION (MINS)	0
RANGE OF QUEUE DELAY - MIN (VEH-H) MAX	0
AV BREAKDOWNS PER DAY	0
AV QUEUE DELAY/DAY (VEH-H)	0
AV TOTAL DELAY/DAY (VEH-H)	0

AVERAGE ACCIDENT NUMBERS (PIA/DAY)	
MAIN ROUTE WITHOUT WORKS	0.0414
MAIN ROUTE WITH WORKS	0.0239
'DIVERSION'	0.0320
<small>PIA: Personal Injury Accidents</small>	
IMPACTS ON ROAD USERS	
ROAD USER COSTS PER DAY	\$255,022
CONGESTED HOURS PER DAY*	15

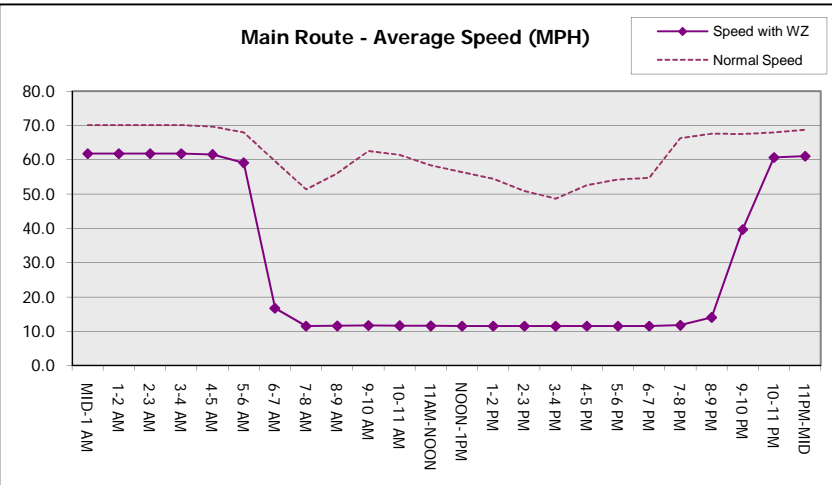
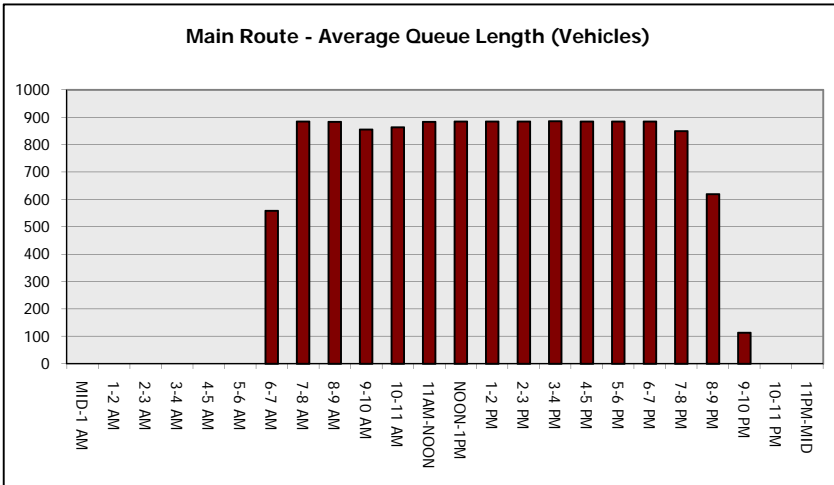
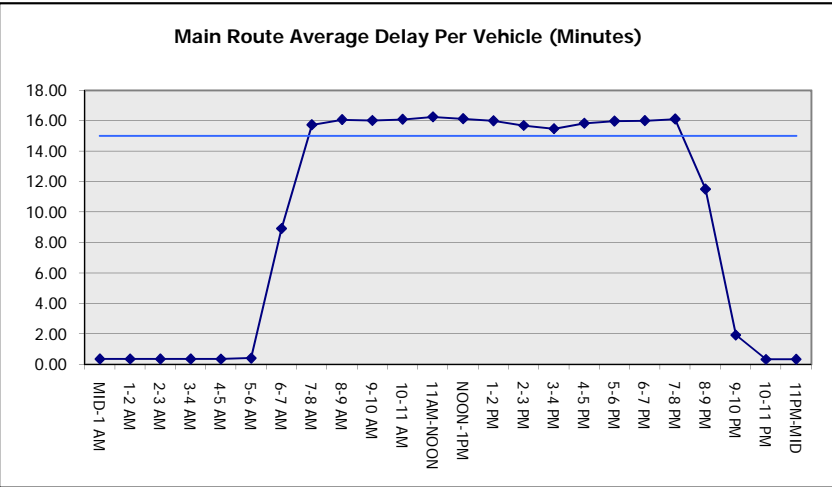
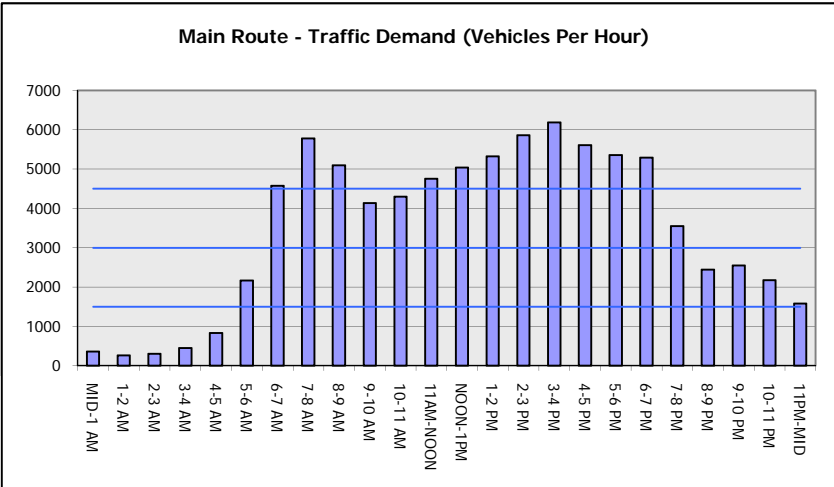
*Delays Exceeding User-Specified Maximum

**IH 94: CTH O TO STH 100 (WAUKESHA COUNTY)
CONTINUOUS (24 HOUR) CLOSURE
NO DIVERSION ROUTE (MAX QUEUE METHOD)**

OCTOBER
Analyzed for 2009
Construction Season

GRAPHICAL REPRESENTATION OF TRAFFIC MODEL INPUT AND OUTPUT

FRIDAY WESTBOUND DIRECTION



IH 94: CTH O TO STH 100 (WAUKESHA COUNTY) CONTINUOUS (24 HOUR) CLOSURE NO DIVERSION ROUTE (MAX QUEUE METHOD)	OCTOBER
	Analyzed for 2009 Construction Season

SUMMARY OF TRAFFIC MODEL OUTPUT

FRIDAY EASTBOUND DIRECTION

TIME OF DAY	FLOWS AND CAPACITY IN VEH/HR							AVERAGE SPEEDS IN MPH		
	MAIN ROUTE		SITE CAPA CITY	FLOW		AV.DEL PER VEH (MINS)	AVERAGE QUEUE (VEH)	MAIN ROUTE		SITE
	DEMAND FLOW	PCT HEAVY		MAIN ROUTE	'DIVER TED'			WITHOUT WORK ZONE	WITH WORK ZONE	
MID-1 AM	312	0.0	3000	312	0	0.36	0	70.2	61.8	49.7
1-2 AM	223	0.0	3000	223	0	0.36	0	70.2	61.8	49.7
2-3 AM	264	0.0	3000	264	0	0.36	0	70.2	61.8	49.7
3-4 AM	402	0.0	3000	402	0	0.36	0	70.2	61.8	49.7
4-5 AM	711	0.0	3000	711	0	0.36	0	69.9	61.6	49.7
5-6 AM	2226	0.0	2999	2226	0	0.46	0	67.9	58.1	45.1
6-7 AM	5331	0.0	2999	3923	1408	11.60+	673	54.5	13.6	37.3
7-8 AM	6102	0.0	3000	3000	3102	15.52+	884	49.2	11.5	37.3
8-9 AM	5154	0.0	3000	2993	2161	16.07+	884	55.6	11.5	37.3
9-10 AM	4412	0.0	2999	2949	1463	16.19+	872	60.7	11.6	37.3
10-11 AM	4082	0.0	3000	2991	1091	16.00+	853	63.0	11.7	37.3
11AM-NOON	4440	0.0	2999	3020	1420	16.17+	871	60.5	11.6	37.3
NOON-1PM	4689	0.0	2999	3004	1685	16.29+	884	58.8	11.5	37.3
1-2 PM	4845	0.0	3000	3000	1845	16.23+	884	57.8	11.5	37.3
2-3 PM	5593	0.0	3000	3000	2593	15.84+	884	52.7	11.5	37.3
3-4 PM	5942	0.0	3000	3000	2942	15.63+	884	50.2	11.5	37.3
4-5 PM	5705	0.0	3000	3000	2705	15.77+	884	51.9	11.5	37.3
5-6 PM	5445	0.0	3000	3000	2446	15.92+	884	53.7	11.5	37.3
6-7 PM	4751	0.0	3000	2998	1753	16.22+	882	58.4	11.6	37.3
7-8 PM	3729	0.0	3000	2989	740	16.09+	851	65.4	11.7	37.3
8-9 PM	2843	0.0	2999	2816	27	15.11+	793	67.2	12.0	37.3
9-10 PM	2872	0.0	3000	2872	0	12.21	633	67.2	13.3	37.3
10-11 PM	2430	0.0	2999	2430	0	5.04	307	67.7	23.9	41.3
11PM-MID	1737	0.0	3000	1737	0	0.34	0	68.6	61.0	49.7

+ INDICATES QUEUEING EXCEEDS USER-SPECIFIED MAXIMUM LIMIT

BREAKDOWN DURATION (MINS)	0
RANGE OF QUEUE DELAY - MIN (VEH-H) MAX	0.0
AV BREAKDOWNS PER DAY	0.00
AV QUEUE DELAY/DAY (VEH-H)	0.0
AV TOTAL DELAY/DAY (VEH-H)	0.0

BREAKDOWN DURATION (MINS)	0
RANGE OF QUEUE DELAY - MIN (VEH-H) MAX	0
AV BREAKDOWNS PER DAY	0
AV QUEUE DELAY/DAY (VEH-H)	0
AV TOTAL DELAY/DAY (VEH-H)	0

MAIN ROUTE WITHOUT WORKS	0.0416
MAIN ROUTE WITH WORKS	0.0243
'DIVERSION'	0.0313

PIA: Personal Injury Accidents

ROAD USER COSTS PER DAY	\$268,117
CONGESTED HOURS PER DAY*	15

*Delays Exceeding User-Specified Maximum

**IH 94: CTH O TO STH 100 (WAUKESHA COUNTY)
CONTINUOUS (24 HOUR) CLOSURE
NO DIVERSION ROUTE (MAX QUEUE METHOD)**

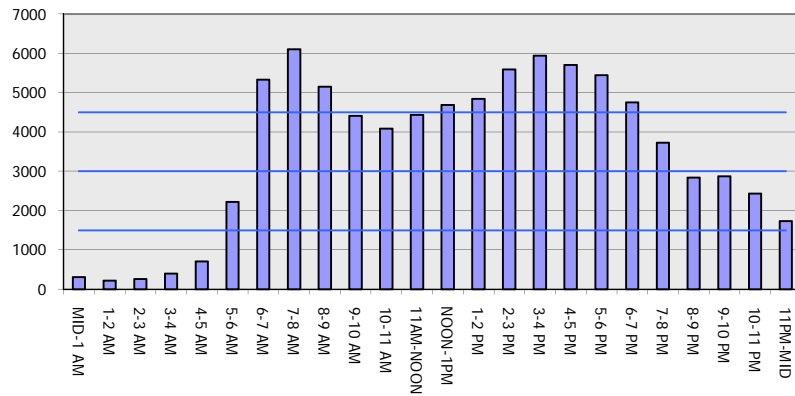
OCTOBER

Analyzed for 2009
Construction Season

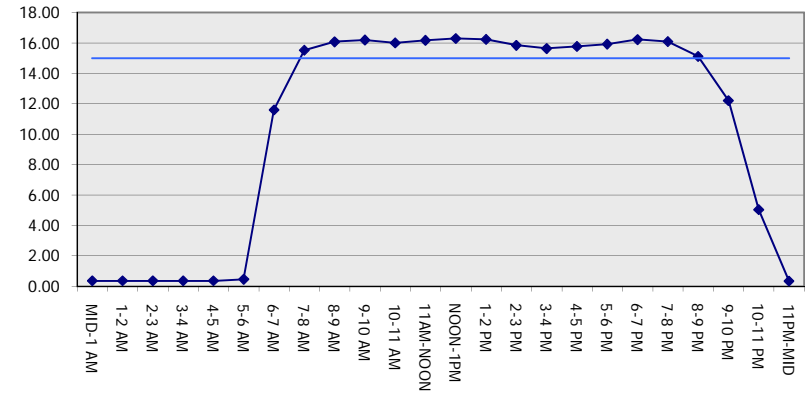
GRAPHICAL REPRESENTATION OF TRAFFIC MODEL INPUT AND OUTPUT

FRIDAY EASTBOUND DIRECTION

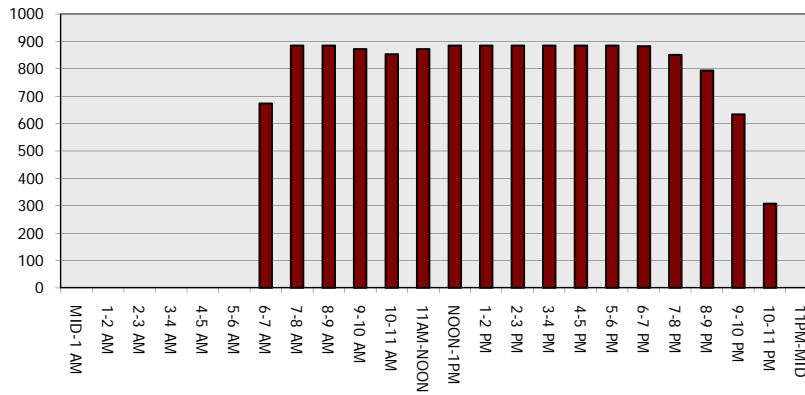
Main Route - Traffic Demand (Vehicles Per Hour)



Main Route Average Delay Per Vehicle (Minutes)



Main Route - Average Queue Length (Vehicles)



Main Route - Average Speed (MPH)

