

IH 94: CTH O TO STH 100 (WAUKESHA COUNTY) CONTINUOUS (24 HOUR) CLOSURE NO DIVERSION ROUTE (MAX QUEUE METHOD)	AUGUST
	Analyzed for 2009 Construction Season

SUMMARY OF TRAFFIC MODEL OUTPUT
SUNDAY WESTBOUND DIRECTION

TIME OF DAY	FLOWS AND CAPACITY IN VEH/HR						AVERAGE SPEEDS IN MPH			
	MAIN ROUTE		SITE CAPA CITY	FLOW		AV.DEL PER VEH (MINS)	AVERAGE QUEUE (VEH)	MAIN ROUTE		SITE
	DEMAND FLOW	PCT HEAVY		MAIN ROUTE	'DIVER TED'			WITHOUT WORK ZONE	WITH WORK ZONE	
MID-1 AM	950	0.0	3000	950	0	0.35	0	69.6	61.5	49.7
1-2 AM	643	0.0	3000	643	0	0.36	0	69.9	61.7	49.7
2-3 AM	278	0.0	3000	278	0	0.36	0	70.2	61.8	49.7
3-4 AM	208	0.0	3000	208	0	0.36	0	70.2	61.8	49.7
4-5 AM	114	0.0	3000	114	0	0.36	0	70.2	61.8	49.7
5-6 AM	187	0.0	3000	187	0	0.36	0	70.2	61.8	49.7
6-7 AM	300	0.0	3000	300	0	0.36	0	70.2	61.8	49.7
7-8 AM	830	0.0	3000	830	0	0.35	0	69.7	61.5	49.7
8-9 AM	915	0.0	3000	915	0	0.35	0	69.6	61.5	49.7
9-10 AM	1953	0.0	3000	1953	0	0.34	0	68.3	60.8	49.7
10-11 AM	2382	0.0	3000	2382	0	0.33	0	67.8	60.5	49.7
11AM-NOON	2688	0.0	2999	2688	0	0.52	0	67.4	56.7	42.9
NOON-1PM	3665	0.0	2999	3665	0	4.99	296	65.8	23.8	37.3
1-2 PM	3841	0.0	2999	3186	655	15.66+	830	64.6	11.8	37.3
2-3 PM	3616	0.0	3000	3000	616	16.11+	850	66.1	11.7	37.3
3-4 PM	3695	0.0	3000	3000	695	16.09+	850	65.6	11.7	37.3
4-5 PM	3748	0.0	3000	3000	748	16.08+	850	65.3	11.7	37.3
5-6 PM	3545	0.0	3000	3000	545	16.11+	849	66.3	11.7	37.3
6-7 PM	3208	0.0	3000	2999	209	16.11+	848	66.8	11.7	37.3
7-8 PM	2316	0.0	2999	2316	0	9.77+	554	67.9	15.7	40.7
8-9 PM	1702	0.0	3000	1702	0	0.48	11	68.6	58.3	49.7
9-10 PM	1359	0.0	3000	1359	0	0.34	0	69.1	61.2	49.7
10-11 PM	1202	0.0	3000	1202	0	0.35	0	69.2	61.3	49.7
11PM-MID	576	0.0	3000	576	0	0.36	0	70.0	61.7	49.7

+ INDICATES QUEUEING EXCEEDS USER-SPECIFIED MAXIMUM LIMIT

----- SITE BREAKDOWN DELAYS -----	
BREAKDOWN DURATION (MINS)	0
RANGE OF QUEUE DELAY - MIN (VEH-H) MAX	0.0
AV BREAKDOWNS PER DAY	0.00
AV QUEUE DELAY/DAY (VEH-H)	0.0
AV TOTAL DELAY/DAY (VEH-H)	0.0

----- SITE ACCIDENT DELAYS -----	
BREAKDOWN DURATION (MINS)	0
RANGE OF QUEUE DELAY - MIN (VEH-H) MAX	0
AV BREAKDOWNS PER DAY	0
AV QUEUE DELAY/DAY (VEH-H)	0
AV TOTAL DELAY/DAY (VEH-H)	0

AVERAGE ACCIDENT NUMBERS (PIA/DAY)	
MAIN ROUTE WITHOUT WORKS	0.0217
MAIN ROUTE WITH WORKS	0.0173
'DIVERSION'	0.0040
PIA: Personal Injury Accidents	
IMPACTS ON ROAD USERS	
ROAD USER COSTS PER DAY	\$112,060
CONGESTED HOURS PER DAY*	7

*Delays Exceeding User-Specified Maximum

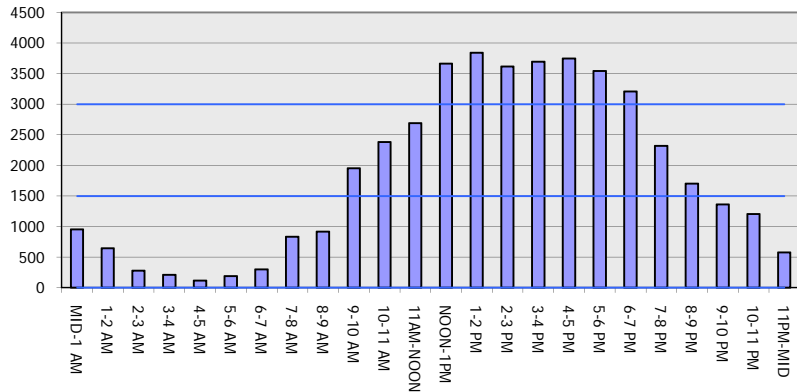
**IH 94: CTH O TO STH 100 (WAUKESHA COUNTY)
CONTINUOUS (24 HOUR) CLOSURE
NO DIVERSION ROUTE (MAX QUEUE METHOD)**

AUGUST
Analyzed for 2009
Construction Season

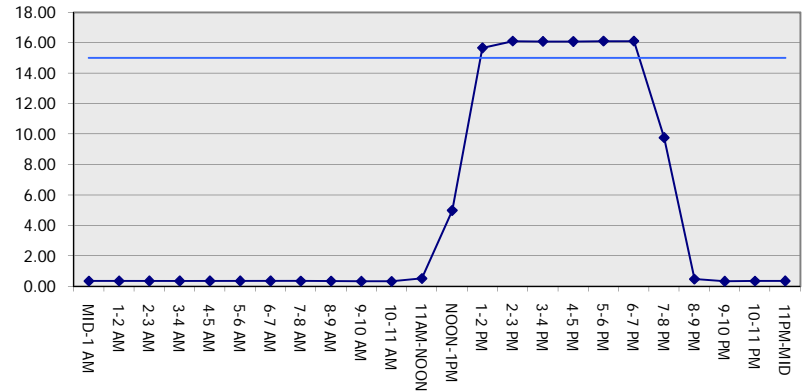
GRAPHICAL REPRESENTATION OF TRAFFIC MODEL INPUT AND OUTPUT

SUNDAY WESTBOUND DIRECTION

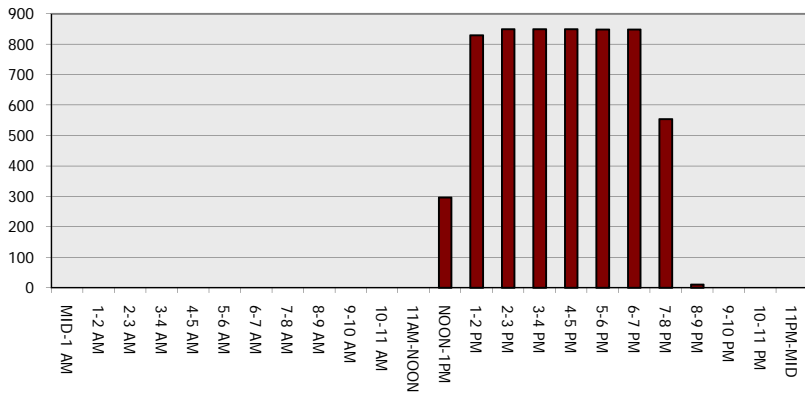
Main Route - Traffic Demand (Vehicles Per Hour)



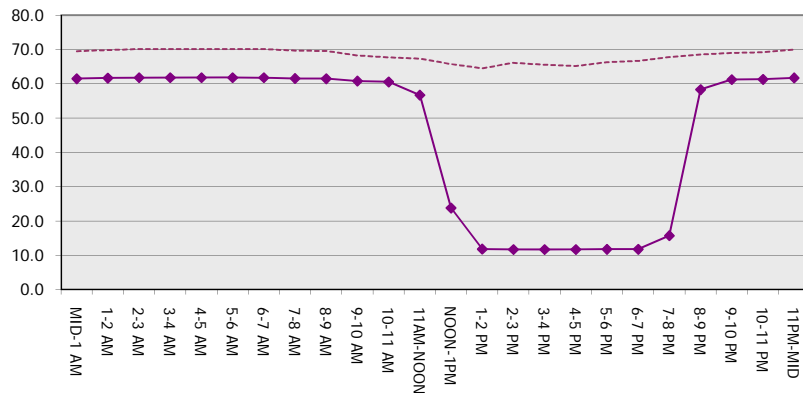
Main Route Average Delay Per Vehicle (Minutes)



Main Route - Average Queue Length (Vehicles)



Main Route - Average Speed (MPH)



IH 94: CTH O TO STH 100 (WAUKESHA COUNTY) CONTINUOUS (24 HOUR) CLOSURE NO DIVERSION ROUTE (MAX QUEUE METHOD)	AUGUST
	Analyzed for 2009 Construction Season

SUMMARY OF TRAFFIC MODEL OUTPUT

SUNDAY EASTBOUND DIRECTION

TIME OF DAY	FLOWS AND CAPACITY IN VEH/HR							AVERAGE SPEEDS IN MPH		
	MAIN ROUTE		SITE CAPA CITY	FLOW		AV.DEL PER VEH (MINS)	AVERAGE QUEUE (VEH)	MAIN ROUTE		SITE
	DEMAND FLOW	PCT HEAVY		MAIN ROUTE	'DIVER TED'			WITHOUT WORK ZONE	WITH WORK ZONE	
MID-1 AM	653	0.0	3000	653	0	0.36	0	69.9	61.7	49.7
1-2 AM	329	0.0	3000	329	0	0.36	0	70.2	61.8	49.7
2-3 AM	154	0.0	3000	154	0	0.36	0	70.2	61.8	49.7
3-4 AM	141	0.0	3000	141	0	0.36	0	70.2	61.8	49.7
4-5 AM	108	0.0	3000	108	0	0.36	0	70.2	61.8	49.7
5-6 AM	146	0.0	3000	146	0	0.36	0	70.2	61.8	49.7
6-7 AM	271	0.0	3000	271	0	0.36	0	70.2	61.8	49.7
7-8 AM	735	0.0	3000	735	0	0.35	0	69.8	61.6	49.7
8-9 AM	909	0.0	3000	909	0	0.35	0	69.6	61.5	49.7
9-10 AM	1983	0.0	3000	1983	0	0.33	0	68.2	60.8	49.7
10-11 AM	2550	0.0	2999	2550	0	0.43	0	67.6	58.4	45.9
11AM-NOON	3146	0.0	2999	3146	0	1.30	38	66.8	45.6	37.4
NOON-1PM	3846	0.0	3000	3846	1	9.58+	552	64.6	15.9	37.3
1-2 PM	3929	0.0	3000	2894	1035	16.27+	865	64.0	11.6	37.3
2-3 PM	3765	0.0	2999	2987	778	16.07+	851	65.1	11.7	37.3
3-4 PM	3736	0.0	2999	2991	744	16.08+	850	65.3	11.7	37.3
4-5 PM	3981	0.0	2999	2994	987	16.01+	852	63.7	11.7	37.3
5-6 PM	3830	0.0	2999	2996	834	16.05+	851	64.7	11.7	37.3
6-7 PM	3637	0.0	2999	2997	640	16.11+	850	66.0	11.7	37.3
7-8 PM	2727	0.0	2999	2727	0	14.58+	766	67.3	12.3	37.3
8-9 PM	2211	0.0	2999	2211	0	3.06	244	68.0	32.1	44.8
9-10 PM	1737	0.0	3000	1737	0	0.34	0	68.6	61.0	49.7
10-11 PM	1352	0.0	3000	1352	0	0.35	0	69.1	61.2	49.7
11PM-MID	525	0.0	3000	525	0	0.36	0	70.1	61.7	49.7

+ INDICATES QUEUEING EXCEEDS USER-SPECIFIED MAXIMUM LIMIT

----- SITE BREAKDOWN DELAYS -----	
BREAKDOWN DURATION (MINS)	0
RANGE OF QUEUE DELAY - MIN (VEH-H) MAX	0.0
AV BREAKDOWNS PER DAY	0.00
AV QUEUE DELAY/DAY (VEH-H)	0.0
AV TOTAL DELAY/DAY (VEH-H)	0.0

----- SITE ACCIDENT DELAYS -----	
BREAKDOWN DURATION (MINS)	0
RANGE OF QUEUE DELAY - MIN (VEH-H) MAX	0
AV BREAKDOWNS PER DAY	0
AV QUEUE DELAY/DAY (VEH-H)	0
AV TOTAL DELAY/DAY (VEH-H)	0

AVERAGE ACCIDENT NUMBERS (PIA/DAY)	
MAIN ROUTE WITHOUT WORKS	0.0229
MAIN ROUTE WITH WORKS	0.0177
'DIVERSION'	0.0057

PIA: Personal Injury Accidents

ECONOMIC IMPACT ON ROAD USERS	
ROAD USER COSTS PER DAY	\$130,779
CONGESTED HOURS PER DAY*	8

*Delays Exceeding User-Specified Maximum

**IH 94: CTH O TO STH 100 (WAUKESHA COUNTY)
CONTINUOUS (24 HOUR) CLOSURE
NO DIVERSION ROUTE (MAX QUEUE METHOD)**

AUGUST
Analyzed for 2009
Construction Season

GRAPHICAL REPRESENTATION OF TRAFFIC MODEL INPUT AND OUTPUT
SUNDAY EASTBOUND DIRECTION

