

IH 94: CTH O TO STH 100 (WAUKESHA COUNTY) CONTINUOUS (24 HOUR) CLOSURE NO DIVERSION ROUTE (MAX QUEUE METHOD)	AUGUST
	Analyzed for 2009 Construction Season

SUMMARY OF TRAFFIC MODEL OUTPUT

MON-THUR WESTBOUND DIRECTION

TIME OF DAY	FLOWS AND CAPACITY IN VEH/HR							AVERAGE SPEEDS IN MPH			
	MAIN ROUTE		SITE CAPA CITY	FLOW		AV.DEL PER VEH (MINS)	AVERAGE QUEUE (VEH)	MAIN ROUTE		SITE	
	DEMAND FLOW	PCT HEAVY		MAIN ROUTE	'DIVER TED'			WITHOUT WORK ZONE	WITH WORK ZONE		
MID-1 AM	578	0.0	3000	578	0	0.36	0	70.0	61.7	49.7	
1-2 AM	349	0.0	3000	349	0	0.36	0	70.2	61.8	49.7	
2-3 AM	306	0.0	3000	306	0	0.36	0	70.2	61.8	49.7	
3-4 AM	398	0.0	3000	398	0	0.36	0	70.2	61.8	49.7	
4-5 AM	817	0.0	3000	817	0	0.35	0	69.7	61.5	49.7	
5-6 AM	2116	0.0	2999	2116	0	0.38	0	68.1	59.8	47.9	
6-7 AM	4085	0.0	2999	4085	0	6.81+	453	63.0	20.1	37.3	
7-8 AM	4958	0.0	3000	2842	2116	15.96+	873	57.0	11.6	37.4	
8-9 AM	4763	0.0	2999	2962	1801	16.20+	881	58.3	11.6	37.3	
9-10 AM	3678	0.0	3000	2989	689	16.10+	850	65.7	11.7	37.3	
10-11 AM	3424	0.0	2999	2992	432	16.11+	849	66.5	11.7	37.3	
11AM-NOON	3857	0.0	2999	2995	863	16.05+	851	64.5	11.7	37.3	
NOON-1PM	4027	0.0	2999	2994	1032	16.00+	852	63.3	11.7	37.3	
1-2 PM	4171	0.0	2999	3001	1170	16.02+	856	62.3	11.7	37.3	
2-3 PM	4487	0.0	3000	3021	1467	16.21+	874	60.2	11.6	37.3	
3-4 PM	4811	0.0	2999	3000	1811	16.25+	884	58.0	11.5	37.3	
4-5 PM	5032	0.0	3000	3000	2032	16.14+	884	56.4	11.5	37.3	
5-6 PM	4939	0.0	3000	3000	1939	16.18+	884	57.1	11.5	37.3	
6-7 PM	4597	0.0	3000	2991	1606	16.22+	878	59.4	11.6	37.3	
7-8 PM	3304	0.0	3000	2972	332	16.07+	846	66.6	11.7	37.3	
8-9 PM	2705	0.0	2999	2705	0	13.82+	725	67.4	12.5	37.3	
9-10 PM	2333	0.0	2999	2333	0	3.37	244	67.8	30.4	43.7	
10-11 PM	2034	0.0	3000	2034	0	0.33	0	68.2	60.7	49.7	
11PM-MID	1344	0.0	3000	1344	0	0.35	0	69.1	61.2	49.7	

+ INDICATES QUEUEING EXCEEDS USER-SPECIFIED MAXIMUM LIMIT

----- SITE BREAKDOWN DELAYS -----	
BREAKDOWN DURATION (MINS)	0
RANGE OF QUEUE DELAY - MIN (VEH-H) MAX	0.0
AV BREAKDOWNS PER DAY	0.00
AV QUEUE DELAY/DAY (VEH-H)	0.0
AV TOTAL DELAY/DAY (VEH-H)	0.0

----- SITE ACCIDENT DELAYS -----	
BREAKDOWN DURATION (MINS)	0
RANGE OF QUEUE DELAY - MIN (VEH-H) MAX	0
AV BREAKDOWNS PER DAY	0
AV QUEUE DELAY/DAY (VEH-H)	0
AV TOTAL DELAY/DAY (VEH-H)	0

AVERAGE ACCIDENT NUMBERS (PIA/DAY)	
MAIN ROUTE WITHOUT WORKS	0.0361
MAIN ROUTE WITH WORKS	0.0239
'DIVERSION'	0.0198
PIA: Personal Injury Accidents	
IMPACTS ON ROAD USERS	
ROAD USER COSTS PER DAY	\$216,590
CONGESTED HOURS PER DAY*	15

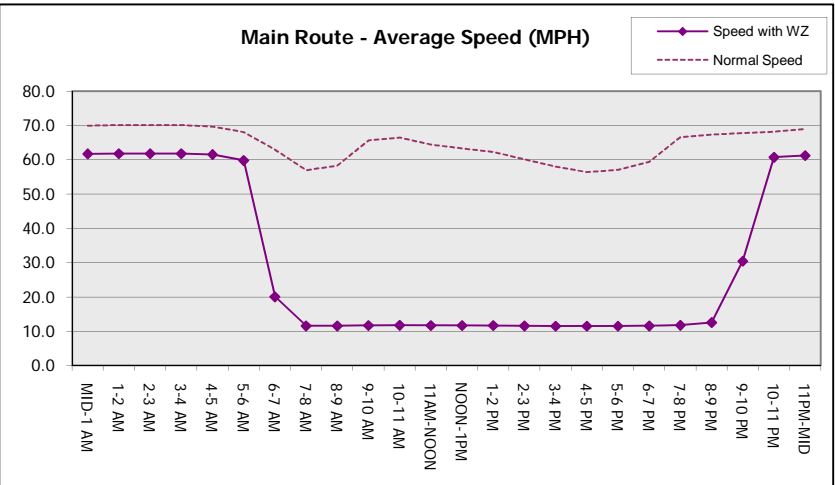
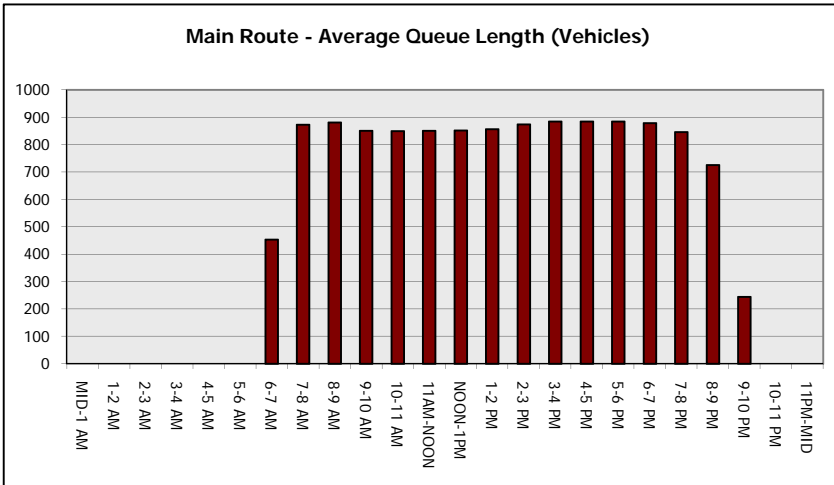
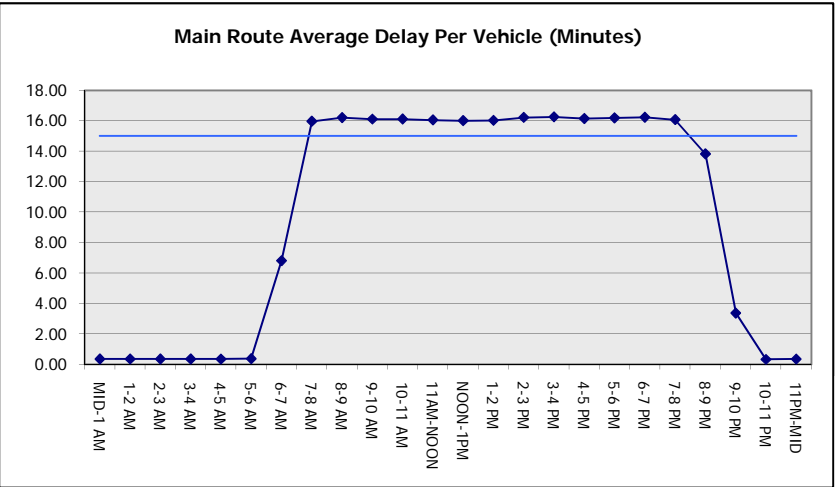
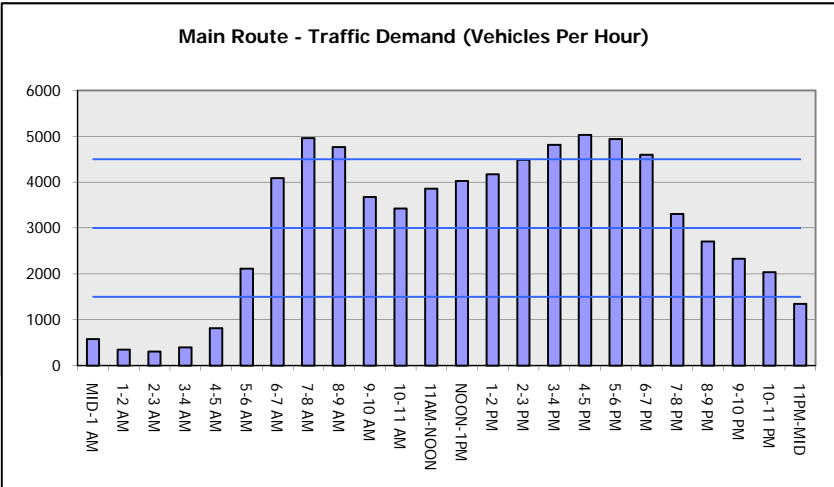
*Delays Exceeding User-Specified Maximum

**IH 94: CTH O TO STH 100 (WAUKESHA COUNTY)
CONTINUOUS (24 HOUR) CLOSURE
NO DIVERSION ROUTE (MAX QUEUE METHOD)**

AUGUST
Analyzed for 2009
Construction Season

GRAPHICAL REPRESENTATION OF TRAFFIC MODEL INPUT AND OUTPUT

MON-THUR WESTBOUND DIRECTION



IH 94: CTH O TO STH 100 (WAUKESHA COUNTY) CONTINUOUS (24 HOUR) CLOSURE NO DIVERSION ROUTE (MAX QUEUE METHOD)	AUGUST
	Analyzed for 2009 Construction Season

SUMMARY OF TRAFFIC MODEL OUTPUT

MON-THUR EASTBOUND DIRECTION

TIME OF DAY	FLOWS AND CAPACITY IN VEH/HR							AVERAGE SPEEDS IN MPH			
	MAIN ROUTE		SITE CAPA CITY	FLOW		AV.DEL PER VEH (MINS)	AVERAGE QUEUE (VEH)	MAIN ROUTE		SITE	
	DEMAND FLOW	PCT HEAVY		MAIN ROUTE	'DIVER TED'			WITHOUT WORK ZONE	WITH WORK ZONE		
MID-1 AM	533	0.0	3000	533	0	0.36	0	70.0	61.7	49.7	
1-2 AM	340	0.0	3000	340	0	0.36	0	70.2	61.8	49.7	
2-3 AM	294	0.0	3000	294	0	0.36	0	70.2	61.8	49.7	
3-4 AM	353	0.0	3000	353	0	0.36	0	70.2	61.8	49.7	
4-5 AM	693	0.0	3000	693	0	0.36	0	69.9	61.7	49.7	
5-6 AM	2109	0.0	2999	2109	0	0.41	0	68.1	59.2	46.9	
6-7 AM	4758	0.0	2999	3747	1011	9.97+	604	58.4	15.4	37.3	
7-8 AM	5330	0.0	3000	3039	2292	15.90+	880	54.5	11.6	37.3	
8-9 AM	5159	0.0	3000	3033	2125	16.00+	880	55.6	11.6	37.3	
9-10 AM	4211	0.0	3000	3041	1170	16.03+	858	62.1	11.7	37.3	
10-11 AM	3816	0.0	3000	2997	818	16.06+	851	64.8	11.7	37.3	
11AM-NOON	4172	0.0	2999	3001	1171	16.02+	856	62.3	11.7	37.3	
NOON-1PM	4228	0.0	3000	3002	1226	16.05+	859	62.0	11.7	37.3	
1-2 PM	4321	0.0	3000	3007	1314	16.11+	865	61.4	11.6	37.3	
2-3 PM	4662	0.0	2999	3014	1648	16.28+	883	59.0	11.6	37.3	
3-4 PM	4855	0.0	3000	3000	1854	16.23+	884	57.7	11.5	37.3	
4-5 PM	5052	0.0	3000	3000	2053	16.13+	884	56.3	11.5	37.3	
5-6 PM	4744	0.0	3000	3002	1742	16.26+	884	58.4	11.6	37.3	
6-7 PM	3948	0.0	3000	2976	972	16.08+	855	63.9	11.7	37.3	
7-8 PM	2975	0.0	3000	2912	62	15.80+	830	67.1	11.8	37.3	
8-9 PM	2774	0.0	3000	2774	0	12.96+	676	67.3	12.9	37.3	
9-10 PM	2391	0.0	2999	2391	0	4.15	276	67.8	27.0	42.3	
10-11 PM	1698	0.0	3000	1698	0	0.34	0	68.6	61.0	49.7	
11PM-MID	1167	0.0	3000	1167	0	0.35	0	69.3	61.4	49.7	

+ INDICATES QUEUEING EXCEEDS USER-SPECIFIED MAXIMUM LIMIT

BREAKDOWN DURATION (MINS)	0
RANGE OF QUEUE DELAY - MIN (VEH-H) MAX	0.0
AV BREAKDOWNS PER DAY	0.00
AV QUEUE DELAY/DAY (VEH-H)	0.0
AV TOTAL DELAY/DAY (VEH-H)	0.0

BREAKDOWN DURATION (MINS)	0
RANGE OF QUEUE DELAY - MIN (VEH-H) MAX	0
AV BREAKDOWNS PER DAY	0
AV QUEUE DELAY/DAY (VEH-H)	0
AV TOTAL DELAY/DAY (VEH-H)	0

MAIN ROUTE WITHOUT WORKS	0.0368
MAIN ROUTE WITH WORKS	0.0236
'DIVERSION'	0.0222

PIA: Personal Injury Accidents

ROAD USER COSTS PER DAY	\$225,600
CONGESTED HOURS PER DAY*	15

*Delays Exceeding User-Specified Maximum

**IH 94: CTH O TO STH 100 (WAUKESHA COUNTY)
 CONTINUOUS (24 HOUR) CLOSURE
 NO DIVERSION ROUTE (MAX QUEUE METHOD)**

AUGUST

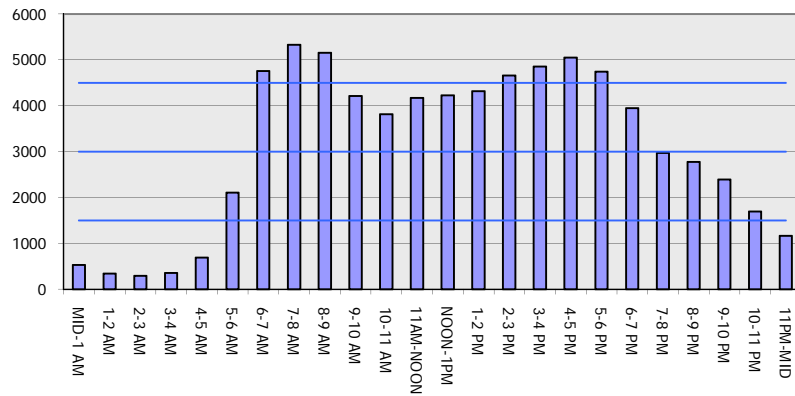
Analyzed for 2009
 Construction Season

GRAPHICAL REPRESENTATION OF TRAFFIC MODEL INPUT AND OUTPUT

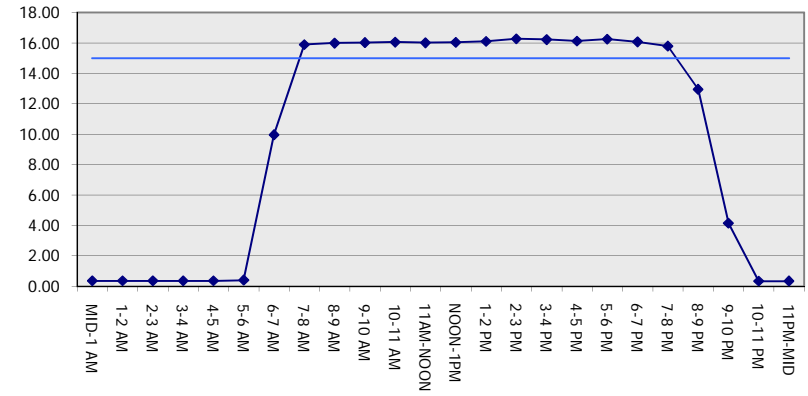
MON-THUR

EASTBOUND DIRECTION

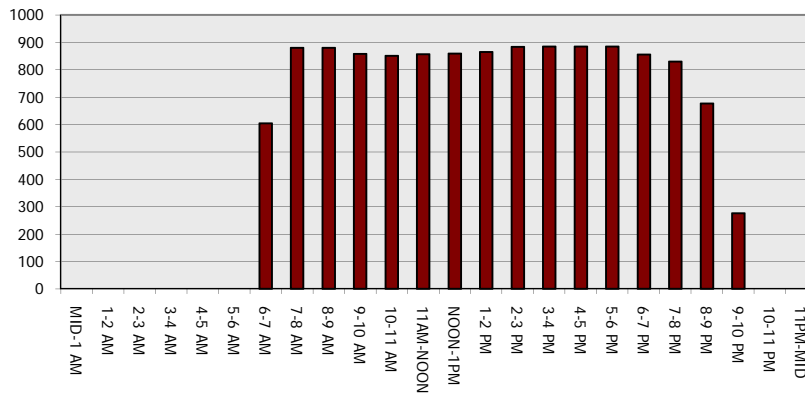
Main Route - Traffic Demand (Vehicles Per Hour)



Main Route Average Delay Per Vehicle (Minutes)



Main Route - Average Queue Length (Vehicles)



Main Route - Average Speed (MPH)

