

USH 45: STH 33 TO USH 41 (WASHINGTON COUNTY) CONTINUOUS (24 HOUR) CLOSURE DIVERSION ROUTE: STH 145 - CTH P - STH 60	AUGUST
	Analyzed for 2009 Construction Season

SUMMARY OF TRAFFIC MODEL OUTPUT

SUNDAY SOUTHBOUND DIRECTION

TIME OF DAY	FLOWS AND CAPACITY IN VEH/HR						AVERAGE SPEEDS IN MPH								
	MAIN ROUTE		ALTERNATE ROUTE		SITE CAPA CITY	FLOW MAIN ROUTE	FLOW DIVER -TING	TOTAL DIVN FLOW	AV.DEL PER VEH (MINS)	AVERAGE QUEUE (VEH)	MAIN ROUTE		ALTERNATE ROUTE		
	DEMAND FLOW	PCT HEAVY	NORMAL FLOW	PCT HEAVY							WITHOUT WORK ZN	WITH WORK ZN	SITE	WITHOUT WORK ZN	WITH WORK ZN
MID-1 AM	125	0.0	15	0.0	1500	125	0	15	0.43	0	66.1	56.5	45.0	24.7	24.7
1-2 AM	80	0.0	10	0.0	1500	80	0	10	0.43	0	66.3	56.6	45.1	24.8	24.8
2-3 AM	52	0.0	6	0.0	1500	52	0	6	0.43	0	66.3	56.7	45.3	24.8	24.8
3-4 AM	41	0.0	4	0.0	1500	41	0	4	0.43	0	66.3	56.8	45.3	24.8	24.8
4-5 AM	59	0.0	6	0.0	1500	59	0	6	0.43	0	66.3	56.7	45.3	24.8	24.8
5-6 AM	119	0.0	14	0.0	1500	119	0	14	0.43	0	66.1	56.5	45.0	24.7	24.7
6-7 AM	209	0.0	25	0.0	1500	209	0	25	0.44	0	66.0	56.2	44.6	24.7	24.7
7-8 AM	233	0.0	28	0.0	1500	233	0	28	0.45	0	66.0	56.1	44.5	24.7	24.7
8-9 AM	415	0.0	50	0.0	1500	415	0	50	0.46	0	65.6	55.6	43.8	24.5	24.5
9-10 AM	606	0.0	72	0.0	1500	606	0	72	0.48	0	65.3	55.0	43.1	24.3	24.3
10-11 AM	807	0.0	96	0.0	1500	807	0	96	0.50	0	64.9	54.4	42.4	24.1	24.1
11A-NOON	961	0.0	115	0.0	1500	961	0	115	0.52	0	64.6	53.9	41.8	24.0	24.0
NOON-1PM	952	0.0	113	0.0	1500	952	0	113	0.51	0	64.6	54.0	41.9	24.0	24.0
1-2 PM	914	0.0	109	0.0	1500	914	0	109	0.51	0	64.7	54.0	42.0	24.0	24.0
2-3 PM	822	0.0	98	0.0	1500	822	0	98	0.50	0	64.8	54.3	42.3	24.1	24.1
3-4 PM	820	0.0	97	0.0	1500	820	0	97	0.50	0	64.8	54.3	42.3	24.1	24.1
4-5 PM	774	0.0	92	0.0	1500	774	0	92	0.50	0	65.0	54.5	42.5	24.2	24.2
5-6 PM	679	0.0	81	0.0	1500	679	0	81	0.49	0	65.1	54.8	42.8	24.2	24.2
6-7 PM	622	0.0	74	0.0	1500	622	0	74	0.48	0	65.2	55.0	43.0	24.3	24.3
7-8 PM	494	0.0	58	0.0	1500	494	0	58	0.47	0	65.5	55.3	43.5	24.4	24.4
8-9 PM	409	0.0	49	0.0	1500	409	0	49	0.46	0	65.6	55.6	43.8	24.5	24.5
9-10 PM	292	0.0	35	0.0	1500	292	0	35	0.45	0	65.8	56.0	44.3	24.6	24.6
10-11 PM	204	0.0	24	0.0	1500	204	0	24	0.44	0	66.0	56.3	44.6	24.7	24.7
11PM-MID	76	0.0	9	0.0	1500	76	0	9	0.43	0	66.3	56.6	45.2	24.8	24.8

----- SITE BREAKDOWN DELAYS -----	
BREAKDOWN DURATION (MINS)	0
RANGE OF QUEUE DELAY - MIN	0.0
(VEH-H) MAX	0.0
RANGE OF DIVN DELAY - MIN	0.0
(VEH-H) MAX	0.0
AV BREAKDOWNS PER DAY	0.00
AV QUEUE DELAY/DAY (VEH-H)	0.0
AV DIVN DELAY/DAY (VEH-H)	0.0
AV TOTAL DELAY/DAY (VEH-H)	0.0

----- SITE ACCIDENT DELAYS -----	
ACCIDENT DURATION (MINS)	0
RANGE OF QUEUE DELAY - MIN	0.0
(VEH-H) MAX	0.0
RANGE OF DIVN DELAY - MIN	0.0
(VEH-H) MAX	0.0
AV ACCIDENTS PER DAY	0.00
AV QUEUE DELAY/DAY (VEH-H)	0.0
AV DIVN DELAY/DAY (VEH-H)	0.0
AV TOTAL DELAY/DAY (VEH-H)	0.0

AVERAGE ACCIDENT NUMBERS (PIA/DAY)	
MAIN ROUTE WITHOUT WORKS	0.0048
MAIN ROUTE WITH WORKS	0.0041
DIVERSION	0.0048

PIA: Personal Injury Accidents

IMPACTS ON ROAD USERS	
ROAD USER COSTS PER DAY (DOLLARS)	\$1,345
CONGESTED HOURS PER DAY*	0

*Delays Exceeding 15 Minutes

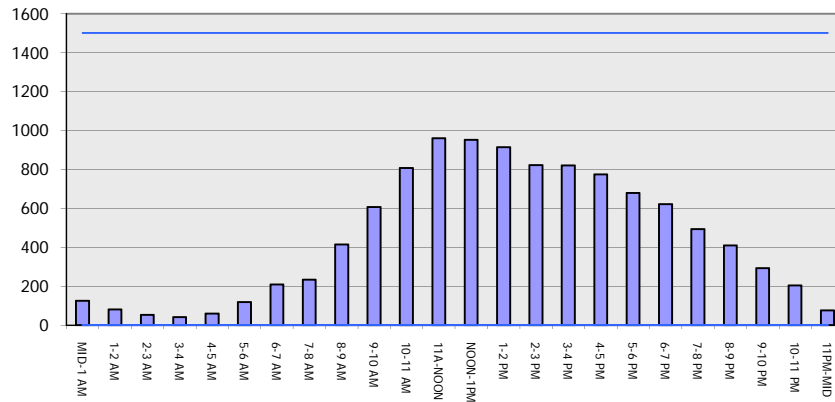
USH 45: STH 33 TO USH 41 (WASHINGTON COUNTY)
CONTINUOUS (24 HOUR) CLOSURE
DIVERSION ROUTE: STH 145 - CTH P - STH 60

AUGUST
 Analyzed for 2009
 Construction Season

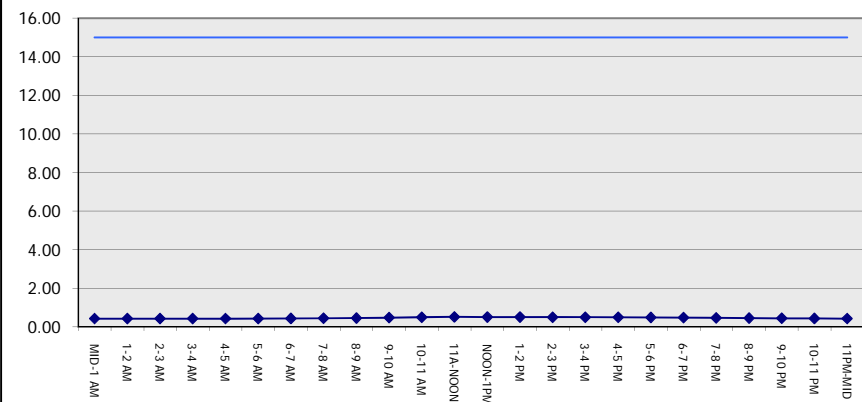
GRAPHICAL REPRESENTATION OF TRAFFIC MODEL INPUT AND OUTPUT

SUNDAY SOUTHBOUND DIRECTION

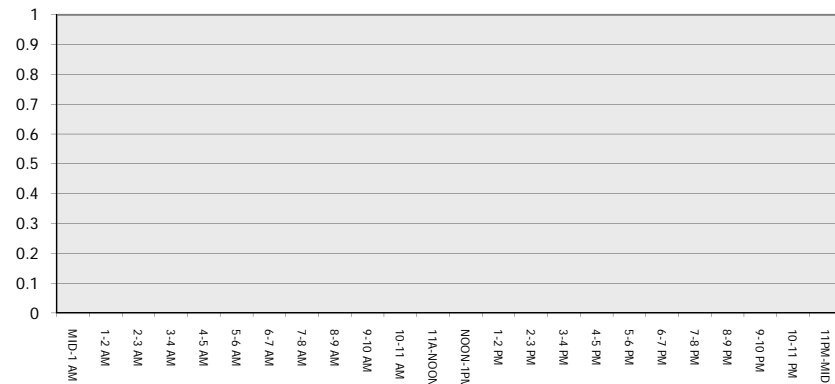
Main Route - Traffic Demand (Vehicles Per Hour)



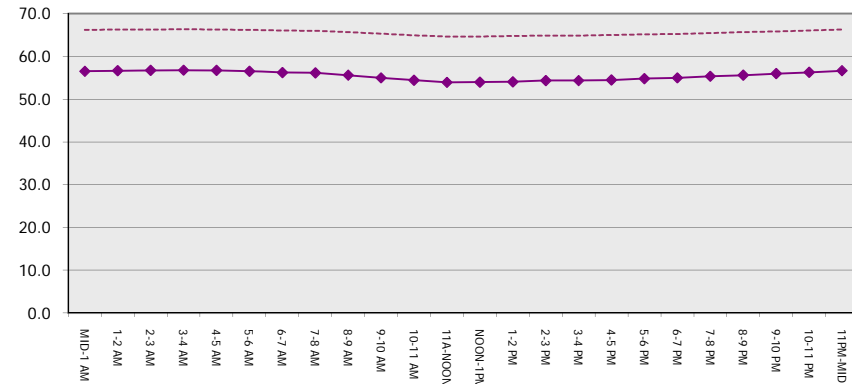
Main Route Average Delay Per Vehicle (Minutes)



Main Route - Average Queue Length (Vehicles)



Main Route - Average Speed (MPH)



USH 45: STH 33 TO USH 41 (WASHINGTON COUNTY) CONTINUOUS (24 HOUR) CLOSURE DIVERSION ROUTE: STH 145 - CTH P - STH 60	AUGUST
	Analyzed for 2009 Construction Season

SUMMARY OF TRAFFIC MODEL OUTPUT

SUNDAY NORTHBOUND DIRECTION

TIME OF DAY	FLOWS AND CAPACITY IN VEH/HR								AVERAGE SPEEDS IN MPH						
	MAIN		DIVERSION		SITE CAPA CITY	FLOW MAIN ROUTE	FLOW DIVER -TING	TOTAL DIVN FLOW	AV.DEL PER VEH (MINS)	AVERAGE QUEUE (VEH)	MAIN ROUTE		SITE	ALTERNATE ROUTE	
	DEMAND FLOW	PCT HEAVY	NORMAL FLOW	PCT HEAVY							WITHOUT WORK ZN	WITH WORK ZN		WITHOUT WORK ZN	WITH WORK ZN
MID-1 AM	209	0.0	25	0.0	1500	209	0	25	0.44	0	66.0	56.2	44.6	24.7	24.7
1-2 AM	127	0.0	15	0.0	1500	127	0	15	0.43	0	66.1	56.5	45.0	24.7	24.7
2-3 AM	91	0.0	11	0.0	1500	91	0	11	0.43	0	66.2	56.6	45.1	24.8	24.8
3-4 AM	55	0.0	6	0.0	1500	55	0	6	0.43	0	66.3	56.7	45.3	24.8	24.8
4-5 AM	44	0.0	5	0.0	1500	44	0	5	0.43	0	66.3	56.8	45.3	24.8	24.8
5-6 AM	47	0.0	5	0.0	1500	47	0	5	0.43	0	66.3	56.8	45.3	24.8	24.8
6-7 AM	107	0.0	13	0.0	1500	107	0	13	0.43	0	66.2	56.6	45.1	24.7	24.7
7-8 AM	188	0.0	23	0.0	1500	188	0	23	0.44	0	66.0	56.3	44.7	24.7	24.7
8-9 AM	244	0.0	29	0.0	1500	244	0	29	0.45	0	66.0	56.1	44.5	24.6	24.6
9-10 AM	370	0.0	44	0.0	1500	370	0	44	0.46	0	65.7	55.7	44.0	24.5	24.5
10-11 AM	487	0.0	58	0.0	1500	487	0	58	0.47	0	65.5	55.3	43.5	24.4	24.4
11A-NOON	674	0.0	80	0.0	1500	674	0	80	0.49	0	65.1	54.8	42.8	24.2	24.2
NOON-1PM	837	0.0	99	0.0	1500	837	0	99	0.50	0	64.8	54.3	42.2	24.1	24.1
1-2 PM	845	0.0	101	0.0	1500	845	0	101	0.50	0	64.8	54.3	42.2	24.1	24.1
2-3 PM	841	0.0	101	0.0	1500	841	0	101	0.50	0	64.8	54.3	42.2	24.1	24.1
3-4 PM	819	0.0	97	0.0	1500	819	0	97	0.50	0	64.8	54.3	42.3	24.1	24.1
4-5 PM	811	0.0	96	0.0	1500	811	0	96	0.50	0	64.9	54.3	42.4	24.1	24.1
5-6 PM	788	0.0	94	0.0	1500	788	0	94	0.50	0	64.9	54.4	42.4	24.1	24.1
6-7 PM	700	0.0	83	0.0	1500	700	0	83	0.49	0	65.1	54.7	42.8	24.2	24.2
7-8 PM	552	0.0	66	0.0	1500	552	0	66	0.48	0	65.3	55.1	43.3	24.3	24.3
8-9 PM	446	0.0	53	0.0	1500	446	0	53	0.47	0	65.6	55.5	43.7	24.4	24.4
9-10 PM	313	0.0	37	0.0	1500	313	0	37	0.45	0	65.8	55.9	44.2	24.5	24.5
10-11 PM	215	0.0	26	0.0	1500	215	0	26	0.44	0	66.0	56.2	44.6	24.7	24.7
11PM-MID	166	0.0	19	0.0	1500	166	0	19	0.44	0	66.1	56.4	44.8	24.7	24.7

----- SITE BREAKDOWN DELAYS -----	
BREAKDOWN DURATION (MINS)	0
RANGE OF QUEUE DELAY - MIN	0.0
(VEH-H) MAX	0.0
RANGE OF DIVN DELAY - MIN	0.0
(VEH-H) MAX	0.0
AV BREAKDOWNS PER DAY	0.00
AV QUEUE DELAY/DAY (VEH-H)	0.0
AV DIVN DELAY/DAY (VEH-H)	0.0
AV TOTAL DELAY/DAY (VEH-H)	0.0

----- SITE ACCIDENT DELAYS -----	
ACCIDENT DURATION (MINS)	0
RANGE OF QUEUE DELAY - MIN	0.0
(VEH-H) MAX	0.0
RANGE OF DIVN DELAY - MIN	0.0
(VEH-H) MAX	0.0
AV ACCIDENTS PER DAY	0.00
AV QUEUE DELAY/DAY (VEH-H)	0.0
AV DIVN DELAY/DAY (VEH-H)	0.0
AV TOTAL DELAY/DAY (VEH-H)	0.0

AVERAGE ACCIDENT NUMBERS (PIA/DAY)	
MAIN ROUTE WITHOUT WORKS	0.0044
MAIN ROUTE WITH WORKS	0.0038
DIVERSION	0.0045

PIA: Personal Injury Accidents

IMPACTS ON ROAD USERS	
ROAD USER COSTS PER DAY (DOLLARS)	\$1,232
CONGESTED HOURS PER DAY*	0

*Delays Exceeding 15 Minutes

**USH 45: STH 33 TO USH 41 (WASHINGTON COUNTY)
 CONTINUOUS (24 HOUR) CLOSURE
 DIVERSION ROUTE: STH 145 - CTH P - STH 60**

AUGUST
 Analyzed for 2009
 Construction Season

GRAPHICAL REPRESENTATION OF TRAFFIC MODEL INPUT AND OUTPUT
SUNDAY NORTHBOUND DIRECTION

