

**USH 45: STH 33 TO USH 41 (WASHINGTON COUNTY)  
CONTINUOUS (24 HOUR) CLOSURE  
DIVERSION ROUTE: STH 145 - CTH P - STH 60**

**MAY**  
Analyzed for 2009  
Construction Season

**SUMMARY OF TRAFFIC MODEL OUTPUT**  
**SUNDAY SOUTHBOUND DIRECTION**

TIME OF DAY	FLOWS AND CAPACITY IN VEH/HR								AVERAGE SPEEDS IN MPH						
	MAIN ROUTE		ALTERNATE ROUTE		SITE CAPA CITY	FLOW MAIN ROUTE	FLOW DIVER -TING	TOTAL DIVN FLOW	AV.DEL PER VEH (MINS)	AVERAGE QUEUE (VEH)	MAIN ROUTE		ALTERNATE ROUTE		
	DEMAND FLOW	PCT HEAVY	NORMAL FLOW	PCT HEAVY							WITHOUT WORK ZN	WITH WORK ZN	SITE	WITHOUT WORK ZN	WITH WORK ZN
MID-1 AM	97	0.0	12	0.0	1500	97	0	12	0.43	0	66.2	56.6	45.1	24.8	24.8
1-2 AM	73	0.0	9	0.0	1500	73	0	9	0.43	0	66.3	56.6	45.2	24.8	24.8
2-3 AM	49	0.0	5	0.0	1500	49	0	5	0.43	0	66.3	56.8	45.3	24.8	24.8
3-4 AM	43	0.0	5	0.0	1500	43	0	5	0.43	0	66.3	56.8	45.3	24.8	24.8
4-5 AM	57	0.0	6	0.0	1500	57	0	6	0.43	0	66.3	56.7	45.3	24.8	24.8
5-6 AM	116	0.0	14	0.0	1500	116	0	14	0.43	0	66.2	56.5	45.0	24.7	24.7
6-7 AM	195	0.0	23	0.0	1500	195	0	23	0.44	0	66.0	56.3	44.7	24.7	24.7
7-8 AM	267	0.0	31	0.0	1500	267	0	31	0.45	0	65.9	56.0	44.4	24.6	24.6
8-9 AM	416	0.0	50	0.0	1500	416	0	50	0.46	0	65.6	55.6	43.8	24.5	24.5
9-10 AM	630	0.0	75	0.0	1500	630	0	75	0.48	0	65.2	54.9	43.0	24.3	24.3
10-11 AM	781	0.0	93	0.0	1500	781	0	93	0.50	0	65.0	54.5	42.5	24.2	24.2
11A-NOON	877	0.0	105	0.0	1500	877	0	105	0.51	0	64.8	54.2	42.1	24.0	24.0
NOON-1PM	874	0.0	104	0.0	1500	874	0	104	0.51	0	64.8	54.2	42.1	24.0	24.0
1-2 PM	803	0.0	95	0.0	1500	803	0	95	0.50	0	64.9	54.4	42.4	24.1	24.1
2-3 PM	792	0.0	94	0.0	1500	792	0	94	0.50	0	64.9	54.4	42.4	24.1	24.1
3-4 PM	747	0.0	89	0.0	1500	747	0	89	0.49	0	65.0	54.5	42.6	24.2	24.2
4-5 PM	760	0.0	91	0.0	1500	760	0	91	0.50	0	65.0	54.5	42.5	24.2	24.2
5-6 PM	650	0.0	78	0.0	1500	650	0	78	0.49	0	65.2	54.8	43.0	24.2	24.2
6-7 PM	542	0.0	65	0.0	1500	542	0	65	0.48	0	65.4	55.2	43.3	24.3	24.3
7-8 PM	479	0.0	57	0.0	1500	479	0	57	0.47	0	65.5	55.4	43.6	24.4	24.4
8-9 PM	380	0.0	45	0.0	1500	380	0	45	0.46	0	65.7	55.7	44.0	24.5	24.5
9-10 PM	311	0.0	37	0.0	1500	311	0	37	0.45	0	65.8	55.9	44.2	24.5	24.5
10-11 PM	215	0.0	26	0.0	1500	215	0	26	0.44	0	66.0	56.2	44.6	24.7	24.7
11PM-MID	101	0.0	12	0.0	1500	101	0	12	0.43	0	66.2	56.6	45.1	24.8	24.8

*----- SITE BREAKDOWN DELAYS -----*	
BREAKDOWN DURATION (MINS)	0
RANGE OF QUEUE DELAY - MIN (VEH-H) MAX	0.0
RANGE OF DIVN DELAY - MIN (VEH-H) MAX	0.0
AV BREAKDOWNS PER DAY	0.00
AV QUEUE DELAY/DAY (VEH-H)	0.0
AV DIVN DELAY/DAY (VEH-H)	0.0
AV TOTAL DELAY/DAY (VEH-H)	0.0

*----- SITE ACCIDENT DELAYS -----*	
ACCIDENT DURATION (MINS)	0
RANGE OF QUEUE DELAY - MIN (VEH-H) MAX	0.0
RANGE OF DIVN DELAY - MIN (VEH-H) MAX	0.0
AV ACCIDENTS PER DAY	0.00
AV QUEUE DELAY/DAY (VEH-H)	0.0
AV DIVN DELAY/DAY (VEH-H)	0.0
AV TOTAL DELAY/DAY (VEH-H)	0.0

AVERAGE ACCIDENT NUMBERS (PIA/DAY)	
MAIN ROUTE WITHOUT WORKS	0.0046
MAIN ROUTE WITH WORKS	0.0039
DIVERSION	0.0046

PIA: Personal Injury Accidents

IMPACTS ON ROAD USERS	
ROAD USER COSTS PER DAY ( DOLLARS)	\$1,268
CONGESTED HOURS PER DAY*	0

\*Delays Exceeding 15 Minutes

**USH 45: STH 33 TO USH 41 (WASHINGTON COUNTY)**  
**CONTINUOUS (24 HOUR) CLOSURE**  
**DIVERSION ROUTE: STH 145 - CTH P - STH 60**

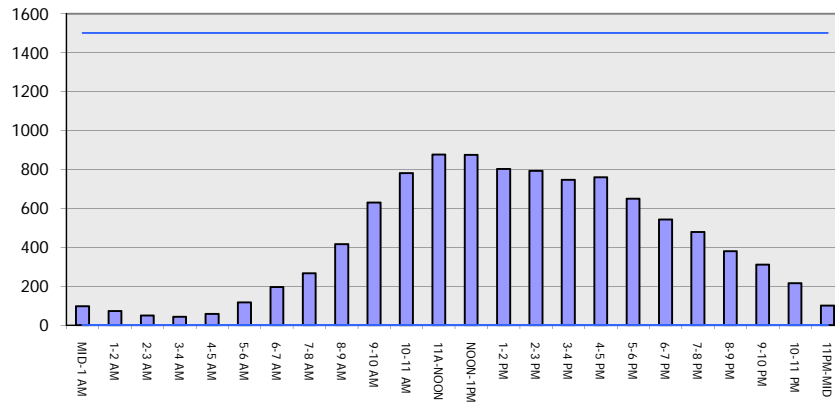
**MAY**

Analyzed for 2009  
 Construction Season

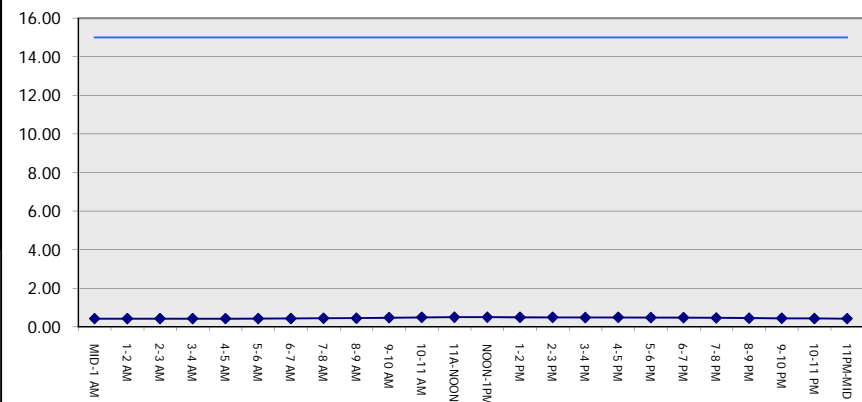
**GRAPHICAL REPRESENTATION OF TRAFFIC MODEL INPUT AND OUTPUT**

**SUNDAY SOUTHBOUND DIRECTION**

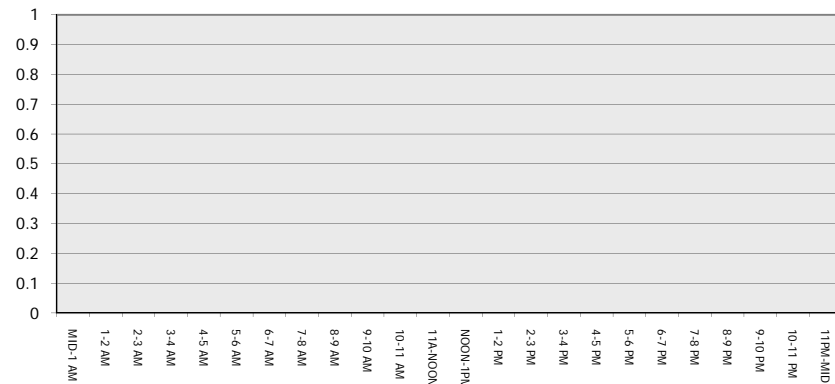
**Main Route - Traffic Demand (Vehicles Per Hour)**



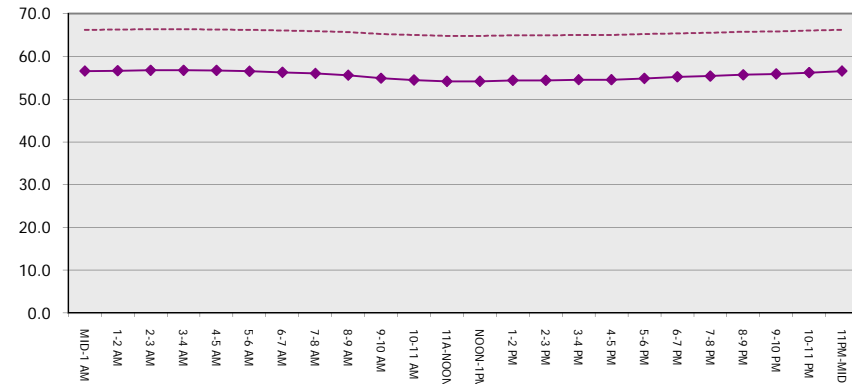
**Main Route Average Delay Per Vehicle (Minutes)**



**Main Route - Average Queue Length (Vehicles)**



**Main Route - Average Speed (MPH)**



<b>USH 45: STH 33 TO USH 41 (WASHINGTON COUNTY)                  CONTINUOUS (24 HOUR) CLOSURE                  DIVERSION ROUTE: STH 145 - CTH P - STH 60</b>	<b>MAY</b>
	Analyzed for 2009 Construction Season

**SUMMARY OF TRAFFIC MODEL OUTPUT**

SUNDAY NORTHBOUND DIRECTION

TIME OF DAY	FLOWS AND CAPACITY IN VEH/HR								AVERAGE SPEEDS IN MPH						
	MAIN		DIVERSION		SITE CAPA CITY	FLOW MAIN ROUTE	FLOW DIVER -TING	TOTAL DIVN FLOW	AV.DEL PER VEH (MINS)	AVERAGE QUEUE (VEH)	MAIN ROUTE		SITE	ALTERNATE ROUTE	
	DEMAND FLOW	PCT HEAVY	NORMAL FLOW	PCT HEAVY							WITHOUT WORK ZN	WITH WORK ZN		WITHOUT WORK ZN	WITH WORK ZN
MID-1 AM	188	0.0	23	0.0	1500	188	0	23	0.44	0	66.0	56.3	44.7	24.7	24.7
1-2 AM	109	0.0	13	0.0	1500	109	0	13	0.43	0	66.2	56.5	45.0	24.7	24.7
2-3 AM	87	0.0	11	0.0	1500	87	0	11	0.43	0	66.2	56.6	45.1	24.8	24.8
3-4 AM	57	0.0	6	0.0	1500	57	0	6	0.43	0	66.3	56.7	45.3	24.8	24.8
4-5 AM	47	0.0	5	0.0	1500	47	0	5	0.43	0	66.3	56.8	45.3	24.8	24.8
5-6 AM	56	0.0	6	0.0	1500	56	0	6	0.43	0	66.3	56.7	45.3	24.8	24.8
6-7 AM	102	0.0	12	0.0	1500	102	0	12	0.43	0	66.2	56.6	45.1	24.8	24.8
7-8 AM	181	0.0	22	0.0	1500	181	0	22	0.44	0	66.1	56.3	44.8	24.7	24.7
8-9 AM	264	0.0	31	0.0	1500	264	0	31	0.45	0	65.9	56.1	44.4	24.6	24.6
9-10 AM	392	0.0	47	0.0	1500	392	0	47	0.46	0	65.6	55.6	43.9	24.5	24.5
10-11 AM	528	0.0	63	0.0	1500	528	0	63	0.47	0	65.4	55.2	43.4	24.3	24.3
11A-NOON	677	0.0	81	0.0	1500	677	0	81	0.49	0	65.1	54.8	42.8	24.2	24.2
NOON-1PM	856	0.0	102	0.0	1500	856	0	102	0.51	0	64.8	54.2	42.2	24.0	24.0
1-2 PM	836	0.0	100	0.0	1500	836	0	100	0.50	0	64.8	54.3	42.3	24.1	24.1
2-3 PM	828	0.0	98	0.0	1500	828	0	98	0.50	0	64.8	54.3	42.3	24.1	24.1
3-4 PM	801	0.0	95	0.0	1500	801	0	95	0.50	0	64.9	54.4	42.4	24.1	24.1
4-5 PM	853	0.0	102	0.0	1500	853	0	102	0.51	0	64.8	54.2	42.2	24.0	24.0
5-6 PM	765	0.0	91	0.0	1500	765	0	91	0.50	0	65.0	54.5	42.5	24.2	24.2
6-7 PM	651	0.0	78	0.0	1500	651	0	78	0.49	0	65.1	54.8	42.9	24.2	24.2
7-8 PM	549	0.0	65	0.0	1500	549	0	65	0.48	0	65.4	55.1	43.3	24.3	24.3
8-9 PM	432	0.0	52	0.0	1500	432	0	52	0.46	0	65.6	55.5	43.8	24.5	24.5
9-10 PM	318	0.0	38	0.0	1500	318	0	38	0.45	0	65.8	55.9	44.2	24.5	24.5
10-11 PM	202	0.0	24	0.0	1500	202	0	24	0.44	0	66.0	56.3	44.6	24.7	24.7
11PM-MID	133	0.0	16	0.0	1500	133	0	16	0.44	0	66.1	56.4	45.0	24.7	24.7

*----- SITE BREAKDOWN DELAYS -----*	
BREAKDOWN DURATION (MINS)	0
RANGE OF QUEUE DELAY - MIN	0.0
(VEH-H) MAX	0.0
RANGE OF DIVN DELAY - MIN	0.0
(VEH-H) MAX	0.0
AV BREAKDOWNS PER DAY	0.00
AV QUEUE DELAY/DAY (VEH-H)	0.0
AV DIVN DELAY/DAY (VEH-H)	0.0
AV TOTAL DELAY/DAY (VEH-H)	0.0

*----- SITE ACCIDENT DELAYS -----*	
ACCIDENT DURATION (MINS)	0
RANGE OF QUEUE DELAY - MIN	0.0
(VEH-H) MAX	0.0
RANGE OF DIVN DELAY - MIN	0.0
(VEH-H) MAX	0.0
AV ACCIDENTS PER DAY	0.00
AV QUEUE DELAY/DAY (VEH-H)	0.0
AV DIVN DELAY/DAY (VEH-H)	0.0
AV TOTAL DELAY/DAY (VEH-H)	0.0

AVERAGE ACCIDENT NUMBERS (PIA/DAY)	
MAIN ROUTE WITHOUT WORKS	0.0044
MAIN ROUTE WITH WORKS	0.0038
DIVERSION	0.0044

PIA: Personal Injury Accidents

IMPACTS ON ROAD USERS	
ROAD USER COSTS PER DAY ( DOLLARS)	\$1,224
CONGESTED HOURS PER DAY*	0

\*Delays Exceeding 15 Minutes

**USH 45: STH 33 TO USH 41 (WASHINGTON COUNTY)  
 CONTINUOUS (24 HOUR) CLOSURE  
 DIVERSION ROUTE: STH 145 - CTH P - STH 60**

**MAY**  
 Analyzed for 2009  
 Construction Season

**GRAPHICAL REPRESENTATION OF TRAFFIC MODEL INPUT AND OUTPUT**  
**SUNDAY NORTHBOUND DIRECTION**

