

**USH 45: STH 33 TO USH 41 (WASHINGTON COUNTY)  
CONTINUOUS (24 HOUR) CLOSURE  
DIVERSION ROUTE: STH 145 - CTH P - STH 60**

**MAY**  
Analyzed for 2009  
Construction Season

**SUMMARY OF TRAFFIC MODEL OUTPUT**

SATURDAY SOUTHBOUND DIRECTION

TIME OF DAY	FLOWS AND CAPACITY IN VEH/HR						AVERAGE SPEEDS IN MPH								
	MAIN ROUTE		ALTERNATE ROUTE		SITE CAPA CITY	FLOW MAIN ROUTE	FLOW DIVER -TING	TOTAL DIVN FLOW	AV.DEL PER VEH (MINS)	AVERAGE QUEUE (VEH)	MAIN ROUTE		ALTERNATE ROUTE		
	DEMAND FLOW	PCT HEAVY	NORMAL FLOW	PCT HEAVY							WITHOUT WORK ZN	WITH WORK ZN	SITE	WITHOUT WORK ZN	WITH WORK ZN
MID-1 AM	84	0.0	10	0.0	1500	84	0	10	0.43	0	66.2	56.6	45.1	24.8	24.8
1-2 AM	51	0.0	6	0.0	1500	51	0	6	0.43	0	66.3	56.7	45.3	24.8	24.8
2-3 AM	43	0.0	5	0.0	1500	43	0	5	0.43	0	66.3	56.8	45.3	24.8	24.8
3-4 AM	67	0.0	8	0.0	1500	67	0	8	0.43	0	66.3	56.7	45.2	24.8	24.8
4-5 AM	138	0.0	16	0.0	1500	138	0	16	0.44	0	66.1	56.4	45.0	24.7	24.7
5-6 AM	281	0.0	34	0.0	1500	281	0	34	0.45	0	65.9	56.0	44.3	24.6	24.6
6-7 AM	394	0.0	47	0.0	1500	394	0	47	0.46	0	65.6	55.6	43.9	24.5	24.5
7-8 AM	505	0.0	61	0.0	1500	505	0	61	0.47	0	65.5	55.3	43.5	24.4	24.4
8-9 AM	636	0.0	76	0.0	1500	636	0	76	0.48	0	65.2	54.9	43.0	24.3	24.3
9-10 AM	712	0.0	84	0.0	1500	712	0	84	0.49	0	65.1	54.6	42.7	24.2	24.2
10-11 AM	776	0.0	93	0.0	1500	776	0	93	0.50	0	65.0	54.5	42.5	24.2	24.2
11A-NOON	848	0.0	101	0.0	1500	848	0	101	0.50	0	64.8	54.3	42.2	24.1	24.1
NOON-1PM	866	0.0	103	0.0	1500	866	0	103	0.51	0	64.8	54.2	42.2	24.0	24.0
1-2 PM	878	0.0	105	0.0	1500	878	0	105	0.51	0	64.8	54.2	42.1	24.0	24.0
2-3 PM	861	0.0	103	0.0	1500	861	0	103	0.51	0	64.8	54.2	42.2	24.0	24.0
3-4 PM	843	0.0	101	0.0	1500	843	0	101	0.50	0	64.8	54.3	42.2	24.1	24.1
4-5 PM	869	0.0	104	0.0	1500	869	0	104	0.51	0	64.8	54.2	42.2	24.0	24.0
5-6 PM	778	0.0	93	0.0	1500	778	0	93	0.50	0	65.0	54.5	42.5	24.2	24.2
6-7 PM	589	0.0	70	0.0	1500	589	0	70	0.48	0	65.3	55.0	43.2	24.3	24.3
7-8 PM	441	0.0	53	0.0	1500	441	0	53	0.47	0	65.6	55.5	43.7	24.4	24.4
8-9 PM	410	0.0	49	0.0	1500	410	0	49	0.46	0	65.6	55.6	43.8	24.5	24.5
9-10 PM	398	0.0	48	0.0	1500	398	0	48	0.46	0	65.6	55.6	43.9	24.5	24.5
10-11 PM	281	0.0	34	0.0	1500	281	0	34	0.45	0	65.9	56.0	44.3	24.6	24.6
11PM-MID	167	0.0	19	0.0	1500	167	0	19	0.44	0	66.1	56.3	44.8	24.7	24.7

*----- SITE BREAKDOWN DELAYS -----*	
BREAKDOWN DURATION (MINS)	0
RANGE OF QUEUE DELAY - MIN (VEH-H) MAX	0.0
RANGE OF DIVN DELAY - MIN (VEH-H) MAX	0.0
AV BREAKDOWNS PER DAY	0.00
AV QUEUE DELAY/DAY (VEH-H)	0.0
AV DIVN DELAY/DAY (VEH-H)	0.0
AV TOTAL DELAY/DAY (VEH-H)	0.0

*----- SITE ACCIDENT DELAYS -----*	
ACCIDENT DURATION (MINS)	0
RANGE OF QUEUE DELAY - MIN (VEH-H) MAX	0.0
RANGE OF DIVN DELAY - MIN (VEH-H) MAX	0.0
AV ACCIDENTS PER DAY	0.00
AV QUEUE DELAY/DAY (VEH-H)	0.0
AV DIVN DELAY/DAY (VEH-H)	0.0
AV TOTAL DELAY/DAY (VEH-H)	0.0

AVERAGE ACCIDENT NUMBERS (PIA/DAY)	
MAIN ROUTE WITHOUT WORKS	0.0053
MAIN ROUTE WITH WORKS	0.0045
DIVERSION	0.0053

PIA: Personal Injury Accidents

IMPACTS ON ROAD USERS	
ROAD USER COSTS PER DAY ( DOLLARS)	\$1,466
CONGESTED HOURS PER DAY*	0

\*Delays Exceeding 15 Minutes

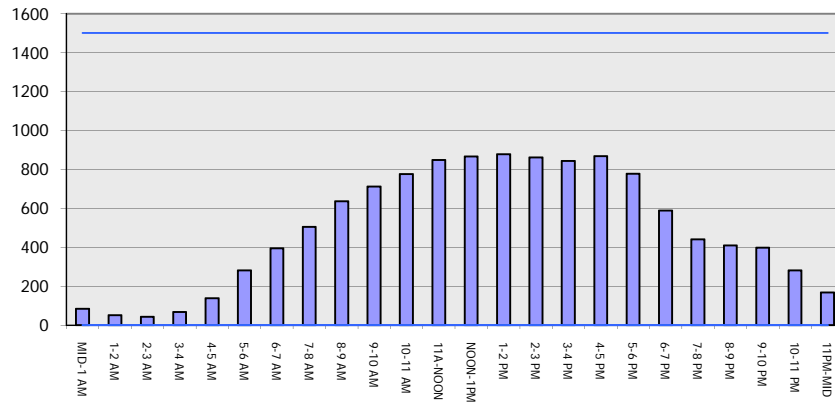
**USH 45: STH 33 TO USH 41 (WASHINGTON COUNTY)  
CONTINUOUS (24 HOUR) CLOSURE  
DIVERSION ROUTE: STH 145 - CTH P - STH 60**

**MAY**  
Analyzed for 2009  
Construction Season

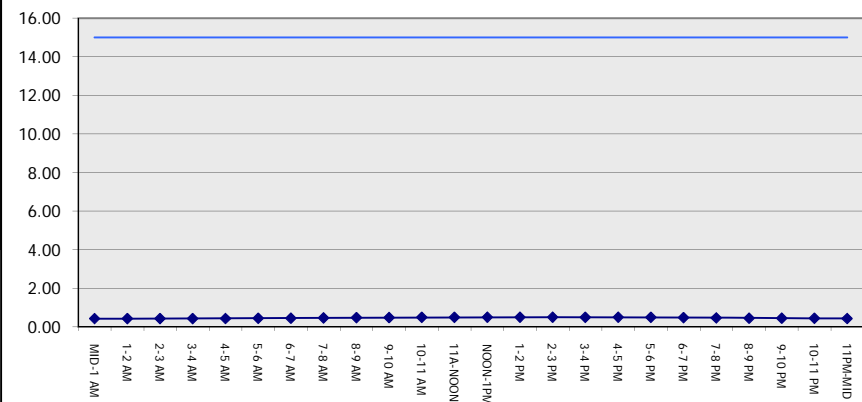
**GRAPHICAL REPRESENTATION OF TRAFFIC MODEL INPUT AND OUTPUT**

**SATURDAY SOUTHBOUND DIRECTION**

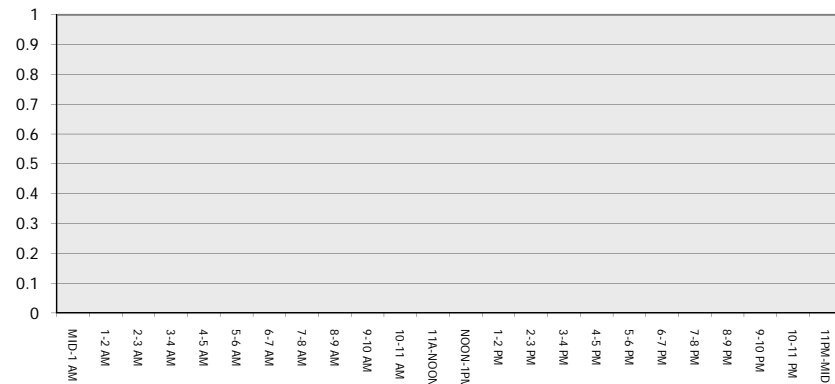
**Main Route - Traffic Demand (Vehicles Per Hour)**



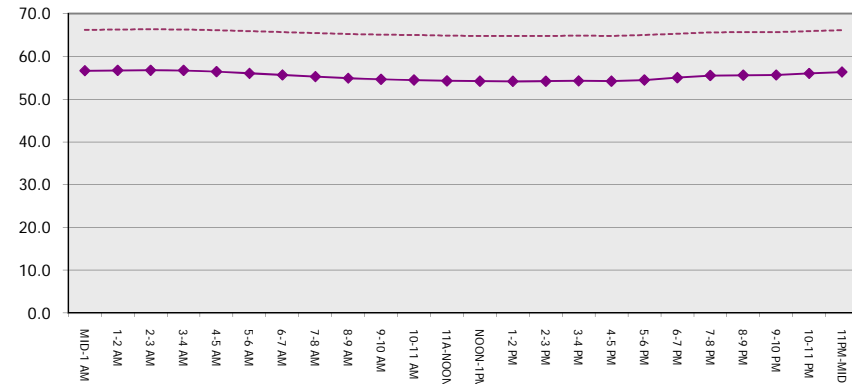
**Main Route Average Delay Per Vehicle (Minutes)**



**Main Route - Average Queue Length (Vehicles)**



**Main Route - Average Speed (MPH)**



<b>USH 45: STH 33 TO USH 41 (WASHINGTON COUNTY)                  CONTINUOUS (24 HOUR) CLOSURE                  DIVERSION ROUTE: STH 145 - CTH P - STH 60</b>	<b>MAY</b>
	Analyzed for 2009 Construction Season

**SUMMARY OF TRAFFIC MODEL OUTPUT**

SATURDAY NORTHBOUND DIRECTION

TIME OF DAY	FLOWS AND CAPACITY IN VEH/HR								AVERAGE SPEEDS IN MPH						
	MAIN		DIVERSION		SITE CAPA CITY	FLOW MAIN ROUTE	FLOW DIVER -TING	TOTAL DIVN FLOW	AV.DEL PER VEH (MINS)	AVERAGE QUEUE (VEH)	MAIN ROUTE		SITE	ALTERNATE ROUTE	
	DEMAND FLOW	PCT HEAVY	NORMAL FLOW	PCT HEAVY							WITHOUT WORK ZN	WITH WORK ZN		WITHOUT WORK ZN	WITH WORK ZN
MID-1 AM	206	0.0	25	0.0	1500	206	0	25	0.44	0	66.0	56.2	44.6	24.7	24.7
1-2 AM	135	0.0	16	0.0	1500	135	0	16	0.44	0	66.1	56.4	45.0	24.7	24.7
2-3 AM	101	0.0	12	0.0	1500	101	0	12	0.43	0	66.2	56.6	45.1	24.8	24.8
3-4 AM	63	0.0	8	0.0	1500	63	0	8	0.43	0	66.3	56.7	45.3	24.8	24.8
4-5 AM	63	0.0	8	0.0	1500	63	0	8	0.43	0	66.3	56.7	45.3	24.8	24.8
5-6 AM	108	0.0	13	0.0	1500	108	0	13	0.43	0	66.2	56.6	45.1	24.7	24.7
6-7 AM	227	0.0	27	0.0	1500	227	0	27	0.44	0	66.0	56.1	44.6	24.7	24.7
7-8 AM	411	0.0	49	0.0	1500	411	0	49	0.46	0	65.6	55.6	43.8	24.5	24.5
8-9 AM	554	0.0	66	0.0	1500	554	0	66	0.48	0	65.3	55.1	43.3	24.3	24.3
9-10 AM	623	0.0	75	0.0	1500	623	0	75	0.48	0	65.2	55.0	43.0	24.3	24.3
10-11 AM	750	0.0	90	0.0	1500	750	0	90	0.50	0	65.0	54.5	42.6	24.2	24.2
11A-NOON	807	0.0	96	0.0	1500	807	0	96	0.50	0	64.9	54.4	42.4	24.1	24.1
NOON-1PM	940	0.0	111	0.0	1500	940	0	111	0.51	0	64.6	54.0	41.9	24.0	24.0
1-2 PM	921	0.0	110	0.0	1500	921	0	110	0.51	0	64.6	54.0	42.0	24.0	24.0
2-3 PM	897	0.0	107	0.0	1500	897	0	107	0.51	0	64.7	54.1	42.0	24.0	24.0
3-4 PM	916	0.0	109	0.0	1500	916	0	109	0.51	0	64.7	54.0	42.0	24.0	24.0
4-5 PM	870	0.0	104	0.0	1500	870	0	104	0.51	0	64.8	54.2	42.2	24.0	24.0
5-6 PM	793	0.0	94	0.0	1500	793	0	94	0.50	0	64.9	54.4	42.4	24.1	24.1
6-7 PM	637	0.0	76	0.0	1500	637	0	76	0.48	0	65.2	54.9	43.0	24.3	24.3
7-8 PM	560	0.0	67	0.0	1500	560	0	67	0.48	0	65.3	55.1	43.3	24.3	24.3
8-9 PM	528	0.0	63	0.0	1500	528	0	63	0.47	0	65.4	55.2	43.4	24.3	24.3
9-10 PM	512	0.0	61	0.0	1500	512	0	61	0.47	0	65.5	55.3	43.5	24.4	24.4
10-11 PM	380	0.0	45	0.0	1500	380	0	45	0.46	0	65.7	55.7	44.0	24.5	24.5
11PM-MID	293	0.0	35	0.0	1500	293	0	35	0.45	0	65.8	56.0	44.3	24.6	24.6

*----- SITE BREAKDOWN DELAYS -----*	
BREAKDOWN DURATION (MINS)	0
RANGE OF QUEUE DELAY - MIN	0.0
(VEH-H) MAX	0.0
RANGE OF DIVN DELAY - MIN	0.0
(VEH-H) MAX	0.0
AV BREAKDOWNS PER DAY	0.00
AV QUEUE DELAY/DAY (VEH-H)	0.0
AV DIVN DELAY/DAY (VEH-H)	0.0
AV TOTAL DELAY/DAY (VEH-H)	0.0

*----- SITE ACCIDENT DELAYS -----*	
ACCIDENT DURATION (MINS)	0
RANGE OF QUEUE DELAY - MIN	0.0
(VEH-H) MAX	0.0
RANGE OF DIVN DELAY - MIN	0.0
(VEH-H) MAX	0.0
AV ACCIDENTS PER DAY	0.00
AV QUEUE DELAY/DAY (VEH-H)	0.0
AV DIVN DELAY/DAY (VEH-H)	0.0
AV TOTAL DELAY/DAY (VEH-H)	0.0

AVERAGE ACCIDENT NUMBERS (PIA/DAY)	
MAIN ROUTE WITHOUT WORKS	0.0055
MAIN ROUTE WITH WORKS	0.0047
DIVERSION	0.0055

PIA: Personal Injury Accidents

IMPACTS ON ROAD USERS	
ROAD USER COSTS PER DAY ( DOLLARS)	\$1,513
CONGESTED HOURS PER DAY*	0

\*Delays Exceeding 15 Minutes

**USH 45: STH 33 TO USH 41 (WASHINGTON COUNTY)  
 CONTINUOUS (24 HOUR) CLOSURE  
 DIVERSION ROUTE: STH 145 - CTH P - STH 60**

**MAY**  
 Analyzed for 2009  
 Construction Season

**GRAPHICAL REPRESENTATION OF TRAFFIC MODEL INPUT AND OUTPUT**  
**SATURDAY NORTHBOUND DIRECTION**

