

**USH 41: STH 67 TO STH 60 (WASHINGTON AND DODGE COUNTIES)
CONTINUOUS (24 HOUR) CLOSURE
DIVERSION ROUTE: CTH K - STH 175 - STH 33**

MAY
Analyzed for 2009
Construction Season

SUMMARY OF TRAFFIC MODEL OUTPUT
FRIDAY SOUTHBOUND DIRECTION

TIME OF DAY	FLOWS AND CAPACITY IN VEH/HR						AVERAGE SPEEDS IN MPH								
	MAIN ROUTE		ALTERNATE ROUTE		SITE CAPA CITY	FLOW MAIN ROUTE	FLOW DIVER -TING	TOTAL DIVN FLOW	AV.DEL PER VEH (MINS)	AVERAGE QUEUE (VEH)	MAIN ROUTE		ALTERNATE ROUTE		
	DEMAND FLOW	PCT HEAVY	NORMAL FLOW	PCT HEAVY							WITHOUT WORK ZN	WITH WORK ZN	SITE	WITHOUT WORK ZN	WITH WORK ZN
MID-1 AM	101	0.0	26	0.0	1500	101	0	26	0.43	0	66.2	59.6	45.1	24.7	24.7
1-2 AM	94	0.0	24	0.0	1500	94	0	24	0.43	0	66.2	59.6	45.1	24.7	24.7
2-3 AM	110	0.0	29	0.0	1500	110	0	29	0.43	0	66.2	59.6	45.0	24.6	24.6
3-4 AM	149	0.0	38	0.0	1500	149	0	38	0.44	0	66.1	59.4	44.9	24.5	24.5
4-5 AM	293	0.0	76	0.0	1500	293	0	76	0.45	0	65.8	59.1	44.3	24.3	24.3
5-6 AM	686	0.0	178	0.0	1500	686	0	178	0.49	0	65.1	57.9	42.8	23.5	23.5
6-7 AM	998	0.0	258	0.0	1500	998	0	258	0.52	0	64.5	57.1	41.7	22.9	22.9
7-8 AM	1085	0.0	281	0.0	1500	1085	0	281	0.53	0	64.3	56.9	41.4	22.7	22.7
8-9 AM	944	0.0	245	0.0	1500	944	0	245	0.51	0	64.6	57.3	41.9	23.0	23.0
9-10 AM	881	0.0	228	0.0	1500	881	0	228	0.51	0	64.8	57.4	42.1	23.1	23.1
10-11 AM	914	0.0	237	0.0	1500	914	0	237	0.51	0	64.7	57.3	42.0	23.0	23.0
11A-NOON	933	0.0	242	0.0	1500	933	0	242	0.51	0	64.6	57.3	41.9	23.0	23.0
NOON-1PM	953	0.0	247	0.0	1500	953	0	247	0.51	0	64.6	57.3	41.9	22.9	22.9
1-2 PM	1127	0.0	292	0.0	1500	1127	0	292	0.54	0	64.3	56.6	40.9	22.6	22.6
2-3 PM	1152	0.0	298	0.0	1500	1152	0	298	0.57	0	64.2	56.2	40.1	22.5	22.5
3-4 PM	1261	0.0	326	0.0	1500	1261	0	326	0.72	0	64.0	54.4	36.6	22.4	22.4
4-5 PM	1347	0.0	349	0.0	1500	1347	0	349	0.83	0	63.9	53.0	34.3	22.2	22.2
5-6 PM	1296	0.0	336	0.0	1500	1296	0	336	0.76	0	64.0	53.8	35.6	22.3	22.3
6-7 PM	929	0.0	241	0.0	1500	929	0	241	0.51	0	64.6	57.3	41.9	23.0	23.0
7-8 PM	715	0.0	185	0.0	1500	715	0	185	0.49	0	65.1	57.9	42.7	23.4	23.4
8-9 PM	536	0.0	139	0.0	1500	536	0	139	0.47	0	65.4	58.4	43.3	23.8	23.8
9-10 PM	457	0.0	118	0.0	1500	457	0	118	0.47	0	65.5	58.6	43.7	23.9	23.9
10-11 PM	312	0.0	81	0.0	1500	312	0	81	0.45	0	65.8	59.0	44.2	24.2	24.2
11PM-MID	210	0.0	55	0.0	1500	210	0	55	0.44	0	66.0	59.3	44.6	24.4	24.4

----- SITE BREAKDOWN DELAYS -----	
BREAKDOWN DURATION (MINS)	0
RANGE OF QUEUE DELAY - MIN (VEH-H) MAX	0.0
RANGE OF DIVN DELAY - MIN (VEH-H) MAX	0.0
AV BREAKDOWNS PER DAY	0.00
AV QUEUE DELAY/DAY (VEH-H)	0.0
AV DIVN DELAY/DAY (VEH-H)	0.0
AV TOTAL DELAY/DAY (VEH-H)	0.0

----- SITE ACCIDENT DELAYS -----	
ACCIDENT DURATION (MINS)	0
RANGE OF QUEUE DELAY - MIN (VEH-H) MAX	0.0
RANGE OF DIVN DELAY - MIN (VEH-H) MAX	0.0
AV ACCIDENTS PER DAY	0.00
AV QUEUE DELAY/DAY (VEH-H)	0.0
AV DIVN DELAY/DAY (VEH-H)	0.0
AV TOTAL DELAY/DAY (VEH-H)	0.0

AVERAGE ACCIDENT NUMBERS (PIA/DAY)	
MAIN ROUTE WITHOUT WORKS	0.0120
MAIN ROUTE WITH WORKS	0.0108
DIVERSION	0.0420

PIA: Personal Injury Accidents

IMPACTS ON ROAD USERS	
ROAD USER COSTS PER DAY (DOLLARS)	\$2,468
CONGESTED HOURS PER DAY*	0

*Delays Exceeding 15 Minutes

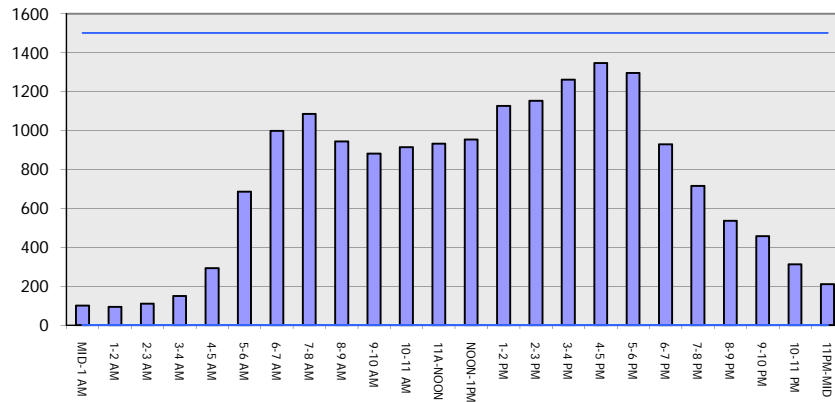
USH 41: STH 67 TO STH 60 (WASHINGTON AND DODGE COUNTIES)
CONTINUOUS (24 HOUR) CLOSURE
DIVERSION ROUTE: CTH K - STH 175 - STH 33

MAY
 Analyzed for 2009
 Construction Season

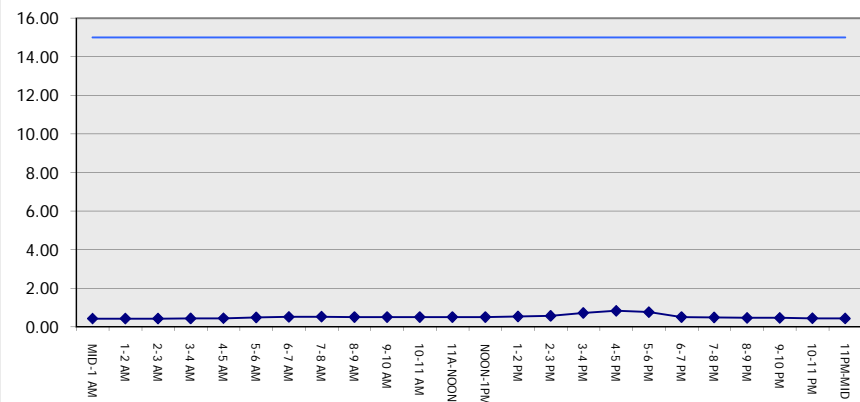
GRAPHICAL REPRESENTATION OF TRAFFIC MODEL INPUT AND OUTPUT

FRIDAY SOUTHBOUND DIRECTION

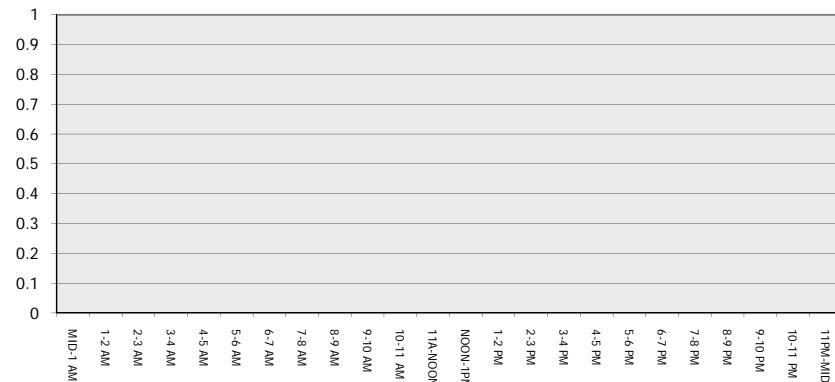
Main Route - Traffic Demand (Vehicles Per Hour)



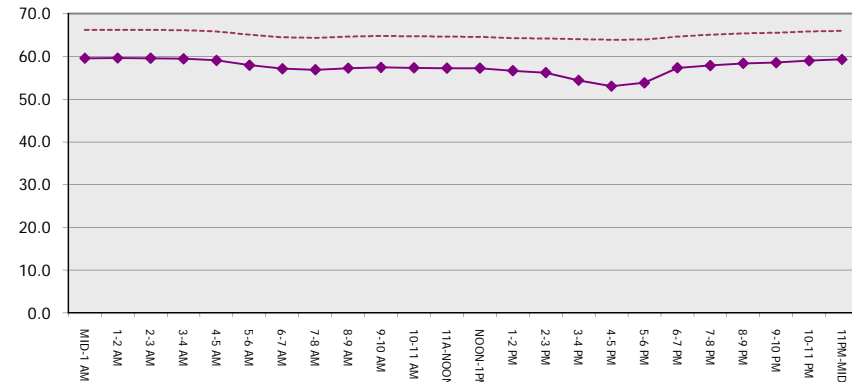
Main Route Average Delay Per Vehicle (Minutes)



Main Route - Average Queue Length (Vehicles)



Main Route - Average Speed (MPH)



USH 41: STH 67 TO STH 60 (WASHINGTON AND DODGE COUNTIES) CONTINUOUS (24 HOUR) CLOSURE DIVERSION ROUTE: CTH K - STH 175 - STH 33	MAY Analyzed for 2009 Construction Season
--	--

SUMMARY OF TRAFFIC MODEL OUTPUT	
FRIDAY	NORTHBOUND DIRECTION

TIME OF DAY	FLOWS AND CAPACITY IN VEH/HR								AVERAGE SPEEDS IN MPH						
	MAIN		DIVERSION		SITE CAPA CITY	FLOW MAIN ROUTE	FLOW DIVER -TING	TOTAL DIVN FLOW	AV.DEL PER VEH (MINS)	AVERAGE QUEUE (VEH)	MAIN ROUTE		SITE	ALTERNATE ROUTE	
	DEMAND FLOW	PCT HEAVY	NORMAL FLOW	PCT HEAVY							WITHOUT WORK ZN	WITH WORK ZN		WITHOUT WORK ZN	WITH WORK ZN
MID-1 AM	188	0.0	48	0.0	1500	188	0	48	0.44	0	66.0	59.3	44.7	24.5	24.5
1-2 AM	146	0.0	38	0.0	1500	146	0	38	0.44	0	66.1	59.4	44.9	24.5	24.5
2-3 AM	108	0.0	28	0.0	1500	108	0	28	0.43	0	66.2	59.6	45.1	24.7	24.7
3-4 AM	128	0.0	33	0.0	1500	128	0	33	0.43	0	66.1	59.5	45.0	24.6	24.6
4-5 AM	219	0.0	57	0.0	1500	219	0	57	0.44	0	66.0	59.2	44.6	24.4	24.4
5-6 AM	436	0.0	113	0.0	1500	436	0	113	0.46	0	65.6	58.6	43.8	24.0	24.0
6-7 AM	781	0.0	203	0.0	1500	781	0	203	0.50	0	65.0	57.7	42.5	23.3	23.3
7-8 AM	984	0.0	255	0.0	1500	984	0	255	0.52	0	64.5	57.1	41.7	22.9	22.9
8-9 AM	1003	0.0	259	0.0	1500	1003	0	259	0.52	0	64.5	57.1	41.7	22.9	22.9
9-10 AM	1156	0.0	299	0.0	1500	1156	0	299	0.58	0	64.2	56.1	39.9	22.5	22.5
10-11 AM	1241	0.0	321	0.0	1500	1241	0	321	0.69	0	64.1	54.7	37.2	22.4	22.4
11A-NOON	1223	0.0	317	0.0	1500	1223	0	317	0.67	0	64.1	55.0	37.8	22.4	22.4
NOON-1PM	1383	0.0	358	0.0	1499	1383	0	358	0.87	0	63.8	52.5	33.4	22.1	22.1
1-2 PM	1556	0.0	403	0.0	1499	1556	0	403	1.62	17	63.5	45.4	30.8	21.7	21.7
2-3 PM	1725	0.0	447	0.0	1500	1725	0	447	6.16	151	63.2	25.2	30.8	21.4	21.4
3-4 PM	2118	0.0	549	0.0	1500	1890	229	777	19.46	518	62.4	11.2	30.8	20.6	19.1
4-5 PM	2329	0.0	603	0.0	1499	1616	714	1317+	28.27	738	62.0	9.0	30.8	20.2	15.5
5-6 PM	2274	0.0	589	0.0	1500	1456	818	1407+	29.92	782	62.2	8.8	30.8	20.3	15.0
6-7 PM	1734	0.0	450	0.0	1499	1242	492	942	22.98	597	63.2	9.9	30.8	21.4	17.9
7-8 PM	1239	0.0	321	0.0	1499	1221	18	339	14.11	366	64.1	14.2	31.2	22.4	22.2
8-9 PM	868	0.0	224	0.0	1500	868	0	224	1.35	37	64.8	48.4	41.9	23.1	23.1
9-10 PM	721	0.0	186	0.0	1500	721	0	186	0.49	0	65.0	57.9	42.7	23.4	23.4
10-11 PM	627	0.0	163	0.0	1500	627	0	163	0.48	0	65.2	58.1	43.0	23.6	23.6
11PM-MID	469	0.0	121	0.0	1500	469	0	121	0.47	0	65.5	58.6	43.6	23.9	23.9

+ INDICATES DIVERSION FLOW EXCEEDS USER-SPECIFIED WARNING LIMIT

----- SITE BREAKDOWN DELAYS -----	
BREAKDOWN DURATION (MINS)	0
RANGE OF QUEUE DELAY - MIN	0.0
(VEH-H) MAX	0.0
RANGE OF DIVN DELAY - MIN	0.0
(VEH-H) MAX	0.0
AV BREAKDOWNS PER DAY	0.00
AV QUEUE DELAY/DAY (VEH-H)	0.0
AV DIVN DELAY/DAY (VEH-H)	0.0
AV TOTAL DELAY/DAY (VEH-H)	0.0

----- SITE ACCIDENT DELAYS -----	
ACCIDENT DURATION (MINS)	0
RANGE OF QUEUE DELAY - MIN	0.0
(VEH-H) MAX	0.0
RANGE OF DIVN DELAY - MIN	0.0
(VEH-H) MAX	0.0
AV ACCIDENTS PER DAY	0.00
AV QUEUE DELAY/DAY (VEH-H)	0.0
AV DIVN DELAY/DAY (VEH-H)	0.0
AV TOTAL DELAY/DAY (VEH-H)	0.0

AVERAGE ACCIDENT NUMBERS (PIA/DAY)	
MAIN ROUTE WITHOUT WORKS	0.0169
MAIN ROUTE WITH WORKS	0.0138
DIVERSION	0.0803

PIA: Personal Injury Accidents

IMPACTS ON ROAD USERS	
ROAD USER COSTS PER DAY (DOLLARS)	\$62,993
CONGESTED HOURS PER DAY*	4

*Delays Exceeding 15 Minutes

**USH 41: STH 67 TO STH 60 (WASHINGTON AND DODGE COUNTIES)
 CONTINUOUS (24 HOUR) CLOSURE
 DIVERSION ROUTE: CTH K - STH 175 - STH 33**

MAY
 Analyzed for 2009
 Construction Season

GRAPHICAL REPRESENTATION OF TRAFFIC MODEL INPUT AND OUTPUT
FRIDAY NORTHBOUND DIRECTION

