

IH 43: CTH X TO STH 50 (WALWORTH COUNTY) CONTINUOUS (24 HOUR) CLOSURE DIVERSION ROUTE: CTH X - STH 96 - USH 45	AUGUST
	Analyzed for 2009 Construction Season

SUMMARY OF TRAFFIC MODEL OUTPUT

SUNDAY SOUTHBOUND DIRECTION

TIME OF DAY	FLOWS AND CAPACITY IN VEH/HR						AVERAGE SPEEDS IN MPH								
	MAIN ROUTE		ALTERNATE ROUTE		SITE CAPA CITY	FLOW MAIN ROUTE	FLOW DIVER -TING	TOTAL DIVN FLOW	AV.DEL PER VEH (MINS)	AVERAGE QUEUE (VEH)	MAIN ROUTE		ALTERNATE ROUTE		
	DEMAND FLOW	PCT HEAVY	NORMAL FLOW	PCT HEAVY							WITHOUT WORK ZN	WITH WORK ZN	SITE	WITHOUT WORK ZN	WITH WORK ZN
MID-1 AM	226	0.0	137	0.0	1500	226	0	137	0.44	0	66.0	57.0	44.6	19.4	19.4
1-2 AM	159	0.0	96	0.0	1500	159	0	96	0.44	0	66.1	57.2	44.8	20.4	20.4
2-3 AM	90	0.0	54	0.0	1500	90	0	54	0.43	0	66.2	57.4	45.1	21.5	21.5
3-4 AM	47	0.0	28	0.0	1500	47	0	28	0.43	0	66.3	57.6	45.3	22.2	22.2
4-5 AM	47	0.0	28	0.0	1500	47	0	28	0.43	0	66.3	57.6	45.3	22.2	22.2
5-6 AM	74	0.0	45	0.0	1500	74	0	45	0.43	0	66.3	57.4	45.2	21.8	21.8
6-7 AM	164	0.0	99	0.0	1500	164	0	99	0.44	0	66.1	57.2	44.8	20.4	20.4
7-8 AM	288	0.0	175	0.0	1500	288	0	175	0.45	0	65.8	56.8	44.3	18.4	18.4
8-9 AM	444	0.0	269	0.0	1500	444	0	269	0.47	0	65.6	56.3	43.7	15.9	15.9
9-10 AM	608	0.0	367	0.0	1500	608	0	367	0.48	0	65.3	55.8	43.1	13.3	13.3
10-11 AM	721	0.0	436	0.0	1500	721	0	436	0.49	0	65.0	55.5	42.7	11.9	11.9
11A-NOON	777	0.0	470	0.0	1500	777	0	470	0.50	0	65.0	55.3	42.5	11.5	11.5
NOON-1PM	755	0.0	456	0.0	1500	755	0	456	0.50	0	65.0	55.4	42.5	11.7	11.7
1-2 PM	746	0.0	451	0.0	1500	746	0	451	0.49	0	65.0	55.4	42.6	11.7	11.7
2-3 PM	701	0.0	424	0.0	1500	701	0	424	0.49	0	65.1	55.5	42.7	12.1	12.1
3-4 PM	707	0.0	428	0.0	1500	707	0	428	0.49	0	65.1	55.5	42.7	12.0	12.0
4-5 PM	776	0.0	470	0.0	1500	776	0	470	0.50	0	65.0	55.3	42.5	11.5	11.5
5-6 PM	701	0.0	424	0.0	1500	701	0	424	0.49	0	65.1	55.5	42.7	12.1	12.1
6-7 PM	673	0.0	407	0.0	1500	673	0	407	0.49	0	65.1	55.6	42.8	12.3	12.3
7-8 PM	533	0.0	322	0.0	1500	533	0	322	0.47	0	65.4	56.1	43.4	14.5	14.5
8-9 PM	453	0.0	274	0.0	1500	453	0	274	0.47	0	65.5	56.3	43.7	15.7	15.7
9-10 PM	367	0.0	222	0.0	1500	367	0	222	0.46	0	65.7	56.6	44.0	17.1	17.1
10-11 PM	256	0.0	155	0.0	1500	256	0	155	0.45	0	65.9	56.9	44.5	18.9	18.9
11PM-MID	173	0.0	105	0.0	1500	173	0	105	0.44	0	66.1	57.1	44.8	20.2	20.2

----- SITE BREAKDOWN DELAYS -----	
BREAKDOWN DURATION (MINS)	0
RANGE OF QUEUE DELAY - MIN	0.0
(VEH-H) MAX	0.0
RANGE OF DIVN DELAY - MIN	0.0
(VEH-H) MAX	0.0
AV BREAKDOWNS PER DAY	0.00
AV QUEUE DELAY/DAY (VEH-H)	0.0
AV DIVN DELAY/DAY (VEH-H)	0.0
AV TOTAL DELAY/DAY (VEH-H)	0.0

----- SITE ACCIDENT DELAYS -----	
ACCIDENT DURATION (MINS)	0
RANGE OF QUEUE DELAY - MIN	0.0
(VEH-H) MAX	0.0
RANGE OF DIVN DELAY - MIN	0.0
(VEH-H) MAX	0.0
AV ACCIDENTS PER DAY	0.00
AV QUEUE DELAY/DAY (VEH-H)	0.0
AV DIVN DELAY/DAY (VEH-H)	0.0
AV TOTAL DELAY/DAY (VEH-H)	0.0

AVERAGE ACCIDENT NUMBERS (PIA/DAY)	
MAIN ROUTE WITHOUT WORKS	0.0052
MAIN ROUTE WITH WORKS	0.0045
DIVERSION	0.0244

PIA: Personal Injury Accidents

IMPACTS ON ROAD USERS	
ROAD USER COSTS PER DAY (DOLLARS)	\$1,281
CONGESTED HOURS PER DAY*	0

*Delays Exceeding 15 Minutes

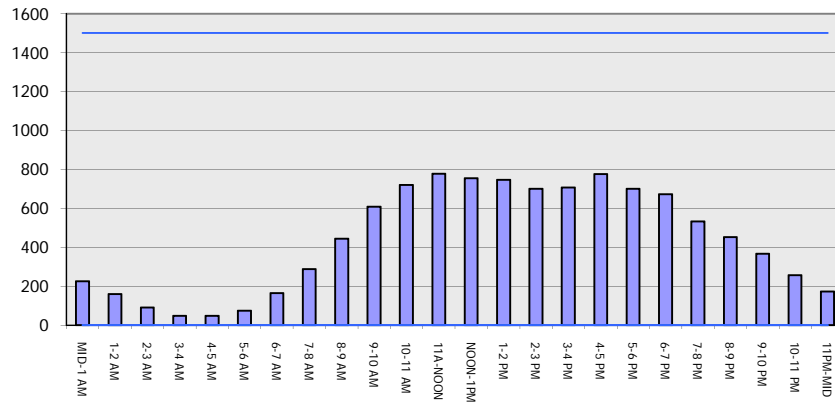
IH 43: CTH X TO STH 50 (WALWORTH COUNTY)
CONTINUOUS (24 HOUR) CLOSURE
DIVERSION ROUTE: CTH X - STH 96 - USH 45

AUGUST
 Analyzed for 2009
 Construction Season

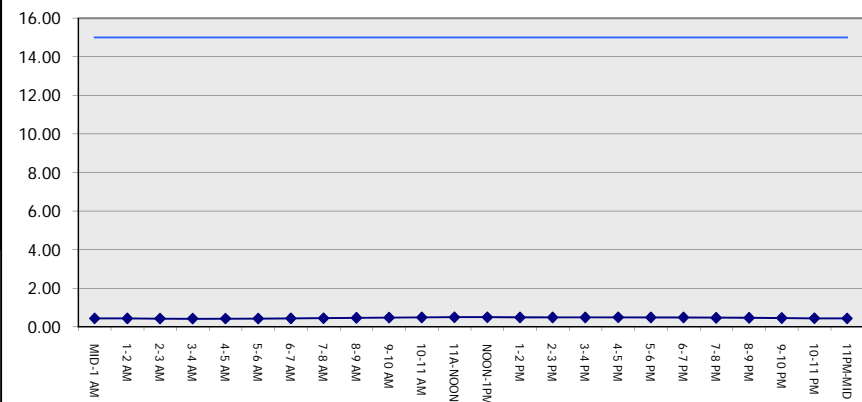
GRAPHICAL REPRESENTATION OF TRAFFIC MODEL INPUT AND OUTPUT

SUNDAY SOUTHBOUND DIRECTION

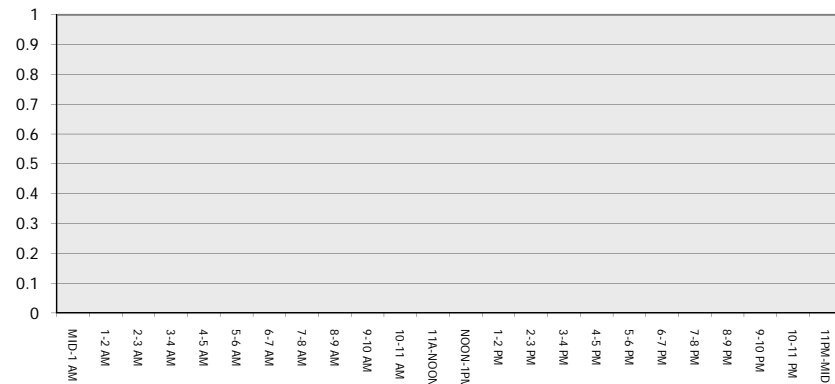
Main Route - Traffic Demand (Vehicles Per Hour)



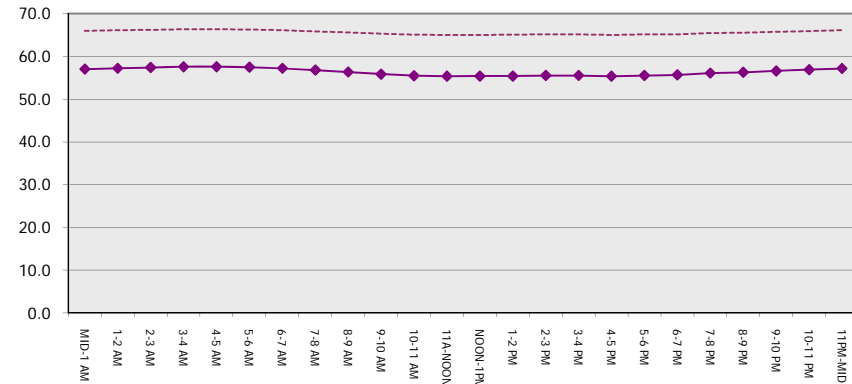
Main Route Average Delay Per Vehicle (Minutes)



Main Route - Average Queue Length (Vehicles)



Main Route - Average Speed (MPH)



IH 43: CTH X TO STH 50 (WALWORTH COUNTY) CONTINUOUS (24 HOUR) CLOSURE DIVERSION ROUTE: CTH X - STH 96 - USH 45	AUGUST
	Analyzed for 2009 Construction Season

SUMMARY OF TRAFFIC MODEL OUTPUT

SUNDAY NORTHBOUND DIRECTION

TIME OF DAY	FLOWS AND CAPACITY IN VEH/HR								AVERAGE SPEEDS IN MPH						
	MAIN		DIVERSION		SITE CAPA CITY	FLOW MAIN ROUTE	FLOW DIVER -TING	TOTAL DIVN FLOW	AV.DEL PER VEH (MINS)	AVERAGE QUEUE (VEH)	MAIN ROUTE		SITE	ALTERNATE ROUTE	
	DEMAND FLOW	PCT HEAVY	NORMAL FLOW	PCT HEAVY							WITHOUT WORK ZN	WITH WORK ZN		WITHOUT WORK ZN	WITH WORK ZN
MID-1 AM	113	0.0	68	0.0	1500	113	0	68	0.43	0	66.2	57.3	45.0	21.2	21.2
1-2 AM	69	0.0	42	0.0	1500	69	0	42	0.43	0	66.3	57.4	45.2	21.9	21.9
2-3 AM	84	0.0	51	0.0	1500	84	0	51	0.43	0	66.2	57.4	45.1	21.6	21.6
3-4 AM	47	0.0	28	0.0	1500	47	0	28	0.43	0	66.3	57.6	45.3	22.2	22.2
4-5 AM	66	0.0	40	0.0	1500	66	0	40	0.43	0	66.3	57.5	45.2	21.9	21.9
5-6 AM	99	0.0	61	0.0	1500	99	0	61	0.43	0	66.2	57.4	45.1	21.4	21.4
6-7 AM	176	0.0	106	0.0	1500	176	0	106	0.44	0	66.1	57.1	44.8	20.2	20.2
7-8 AM	234	0.0	142	0.0	1500	234	0	142	0.45	0	66.0	56.9	44.5	19.3	19.3
8-9 AM	383	0.0	232	0.0	1500	383	0	232	0.46	0	65.6	56.5	44.0	16.8	16.8
9-10 AM	539	0.0	325	0.0	1500	539	0	325	0.47	0	65.4	56.0	43.3	14.4	14.4
10-11 AM	695	0.0	421	0.0	1500	695	0	421	0.49	0	65.1	55.6	42.8	12.1	12.1
11A-NOON	745	0.0	451	0.0	1500	745	0	451	0.49	0	65.0	55.4	42.6	11.7	11.7
NOON-1PM	729	0.0	442	0.0	1500	729	0	442	0.49	0	65.0	55.5	42.7	11.9	11.9
1-2 PM	764	0.0	461	0.0	1500	764	0	461	0.50	0	65.0	55.3	42.5	11.6	11.6
2-3 PM	740	0.0	447	0.0	1500	740	0	447	0.49	0	65.0	55.5	42.6	11.8	11.8
3-4 PM	754	0.0	455	0.0	1500	754	0	455	0.50	0	65.0	55.4	42.5	11.7	11.7
4-5 PM	781	0.0	473	0.0	1500	781	0	473	0.50	0	65.0	55.3	42.5	11.4	11.4
5-6 PM	777	0.0	470	0.0	1500	777	0	470	0.50	0	65.0	55.3	42.5	11.5	11.5
6-7 PM	651	0.0	393	0.0	1500	651	0	393	0.49	0	65.1	55.7	42.9	12.6	12.6
7-8 PM	604	0.0	365	0.0	1500	604	0	365	0.48	0	65.3	55.8	43.1	13.4	13.4
8-9 PM	450	0.0	272	0.0	1500	450	0	272	0.47	0	65.5	56.3	43.7	15.8	15.8
9-10 PM	344	0.0	208	0.0	1500	344	0	208	0.46	0	65.8	56.6	44.1	17.5	17.5
10-11 PM	236	0.0	143	0.0	1500	236	0	143	0.45	0	66.0	56.9	44.5	19.2	19.2
11PM-MID	129	0.0	78	0.0	1500	129	0	78	0.43	0	66.1	57.3	45.0	20.9	20.9

----- SITE BREAKDOWN DELAYS -----	
BREAKDOWN DURATION (MINS)	0
RANGE OF QUEUE DELAY - MIN	0.0
(VEH-H) MAX	0.0
RANGE OF DIVN DELAY - MIN	0.0
(VEH-H) MAX	0.0
AV BREAKDOWNS PER DAY	0.00
AV QUEUE DELAY/DAY (VEH-H)	0.0
AV DIVN DELAY/DAY (VEH-H)	0.0
AV TOTAL DELAY/DAY (VEH-H)	0.0

----- SITE ACCIDENT DELAYS -----	
ACCIDENT DURATION (MINS)	0
RANGE OF QUEUE DELAY - MIN	0.0
(VEH-H) MAX	0.0
RANGE OF DIVN DELAY - MIN	0.0
(VEH-H) MAX	0.0
AV ACCIDENTS PER DAY	0.00
AV QUEUE DELAY/DAY (VEH-H)	0.0
AV DIVN DELAY/DAY (VEH-H)	0.0
AV TOTAL DELAY/DAY (VEH-H)	0.0

AVERAGE ACCIDENT NUMBERS (PIA/DAY)	
MAIN ROUTE WITHOUT WORKS	0.0050
MAIN ROUTE WITH WORKS	0.0044
DIVERSION	0.0237

PIA: Personal Injury Accidents

IMPACTS ON ROAD USERS	
ROAD USER COSTS PER DAY (DOLLARS)	\$1,251
CONGESTED HOURS PER DAY*	0

*Delays Exceeding 15 Minutes

IH 43: CTH X TO STH 50 (WALWORTH COUNTY)
CONTINUOUS (24 HOUR) CLOSURE
DIVERSION ROUTE: CTH X - STH 96 - USH 45

AUGUST
 Analyzed for 2009
 Construction Season

GRAPHICAL REPRESENTATION OF TRAFFIC MODEL INPUT AND OUTPUT
SUNDAY NORTHBOUND DIRECTION

