

IH 43: CTH X TO STH 50 (WALWORTH COUNTY) CONTINUOUS (24 HOUR) CLOSURE DIVERSION ROUTE: CTH X - STH 96 - USH 45	AUGUST
	Analyzed for 2009 Construction Season

SUMMARY OF TRAFFIC MODEL OUTPUT

MON-THUR SOUTHBOUND DIRECTION

TIME OF DAY	FLOWS AND CAPACITY IN VEH/HR						AVERAGE SPEEDS IN MPH								
	MAIN ROUTE		ALTERNATE ROUTE		SITE CAPA CITY	FLOW MAIN ROUTE	FLOW DIVER -TING	TOTAL DIVN FLOW	AV.DEL PER VEH (MINS)	AVERAGE QUEUE (VEH)	MAIN ROUTE		ALTERNATE ROUTE		
	DEMAND FLOW	PCT HEAVY	NORMAL FLOW	PCT HEAVY							WITHOUT WORK ZN	WITH WORK ZN	SITE	WITHOUT WORK ZN	WITH WORK ZN
MID-1 AM	110	0.0	69	0.0	1500	110	0	69	0.43	0	66.2	57.3	45.0	21.2	21.2
1-2 AM	86	0.0	54	0.0	1500	86	0	54	0.43	0	66.2	57.4	45.1	21.5	21.5
2-3 AM	67	0.0	41	0.0	1500	67	0	41	0.43	0	66.3	57.5	45.2	21.9	21.9
3-4 AM	63	0.0	38	0.0	1500	63	0	38	0.43	0	66.3	57.5	45.3	22.0	22.0
4-5 AM	126	0.0	75	0.0	1500	126	0	75	0.43	0	66.1	57.3	45.0	21.0	21.0
5-6 AM	296	0.0	179	0.0	1500	296	0	179	0.45	0	65.8	56.8	44.3	18.3	18.3
6-7 AM	496	0.0	300	0.0	1500	496	0	300	0.47	0	65.5	56.1	43.5	15.0	15.0
7-8 AM	583	0.0	353	0.0	1500	583	0	353	0.48	0	65.3	55.9	43.2	13.7	13.7
8-9 AM	561	0.0	339	0.0	1500	561	0	339	0.48	0	65.3	56.0	43.3	14.0	14.0
9-10 AM	567	0.0	343	0.0	1500	567	0	343	0.48	0	65.3	56.0	43.2	13.9	13.9
10-11 AM	605	0.0	365	0.0	1500	605	0	365	0.48	0	65.3	55.8	43.1	13.4	13.4
11A-NOON	603	0.0	364	0.0	1500	603	0	364	0.48	0	65.3	55.8	43.1	13.4	13.4
NOON-1PM	626	0.0	379	0.0	1500	626	0	379	0.48	0	65.2	55.8	43.0	13.0	13.0
1-2 PM	645	0.0	390	0.0	1500	645	0	390	0.48	0	65.2	55.7	43.0	12.7	12.7
2-3 PM	699	0.0	423	0.0	1500	699	0	423	0.49	0	65.1	55.6	42.8	12.1	12.1
3-4 PM	845	0.0	512	0.0	1500	845	0	512	0.50	0	64.8	55.1	42.2	10.9	10.9
4-5 PM	883	0.0	534	0.0	1500	883	0	534	0.51	0	64.8	55.0	42.1	10.6	10.6
5-6 PM	770	0.0	466	0.0	1500	770	0	466	0.50	0	65.0	55.3	42.5	11.6	11.6
6-7 PM	564	0.0	341	0.0	1500	564	0	341	0.48	0	65.3	56.0	43.3	14.0	14.0
7-8 PM	410	0.0	248	0.0	1500	410	0	248	0.46	0	65.6	56.4	43.8	16.5	16.5
8-9 PM	353	0.0	213	0.0	1500	353	0	213	0.46	0	65.7	56.6	44.1	17.3	17.3
9-10 PM	306	0.0	184	0.0	1500	306	0	184	0.45	0	65.8	56.8	44.3	18.1	18.1
10-11 PM	233	0.0	141	0.0	1500	233	0	141	0.45	0	66.0	56.9	44.5	19.3	19.3
11PM-MID	168	0.0	101	0.0	1500	168	0	101	0.44	0	66.1	57.1	44.8	20.3	20.3

----- SITE BREAKDOWN DELAYS -----	
BREAKDOWN DURATION (MINS)	0
RANGE OF QUEUE DELAY - MIN	0.0
(VEH-H) MAX	0.0
RANGE OF DIVN DELAY - MIN	0.0
(VEH-H) MAX	0.0
AV BREAKDOWNS PER DAY	0.00
AV QUEUE DELAY/DAY (VEH-H)	0.0
AV DIVN DELAY/DAY (VEH-H)	0.0
AV TOTAL DELAY/DAY (VEH-H)	0.0

----- SITE ACCIDENT DELAYS -----	
ACCIDENT DURATION (MINS)	0
RANGE OF QUEUE DELAY - MIN	0.0
(VEH-H) MAX	0.0
RANGE OF DIVN DELAY - MIN	0.0
(VEH-H) MAX	0.0
AV ACCIDENTS PER DAY	0.00
AV QUEUE DELAY/DAY (VEH-H)	0.0
AV DIVN DELAY/DAY (VEH-H)	0.0
AV TOTAL DELAY/DAY (VEH-H)	0.0

AVERAGE ACCIDENT NUMBERS (PIA/DAY)	
MAIN ROUTE WITHOUT WORKS	0.0053
MAIN ROUTE WITH WORKS	0.0046
DIVERSION	0.0248

PIA: Personal Injury Accidents

IMPACTS ON ROAD USERS	
ROAD USER COSTS PER DAY (DOLLARS)	\$1,013
CONGESTED HOURS PER DAY*	0

*Delays Exceeding 15 Minutes

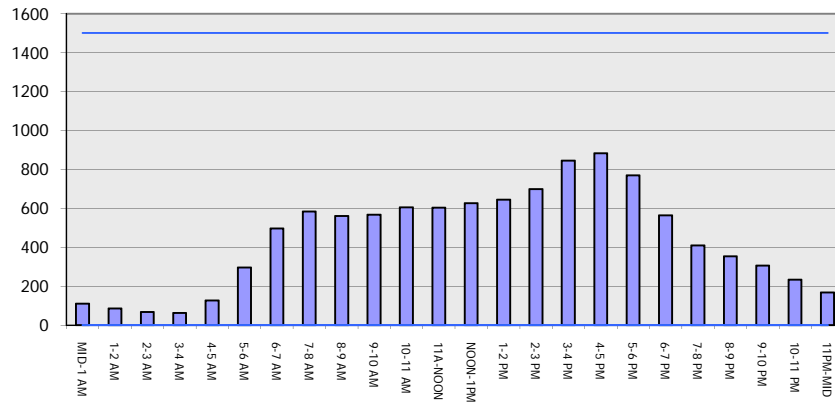
IH 43: CTH X TO STH 50 (WALWORTH COUNTY)
CONTINUOUS (24 HOUR) CLOSURE
DIVERSION ROUTE: CTH X - STH 96 - USH 45

AUGUST
 Analyzed for 2009
 Construction Season

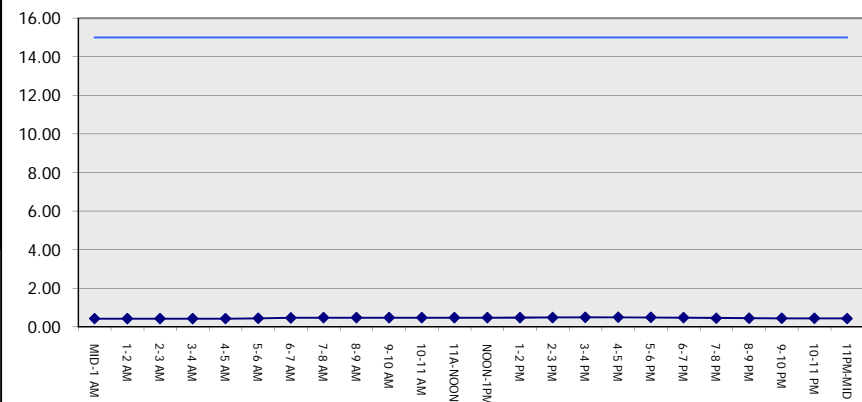
GRAPHICAL REPRESENTATION OF TRAFFIC MODEL INPUT AND OUTPUT

MON-THUR SOUTHBOUND DIRECTION

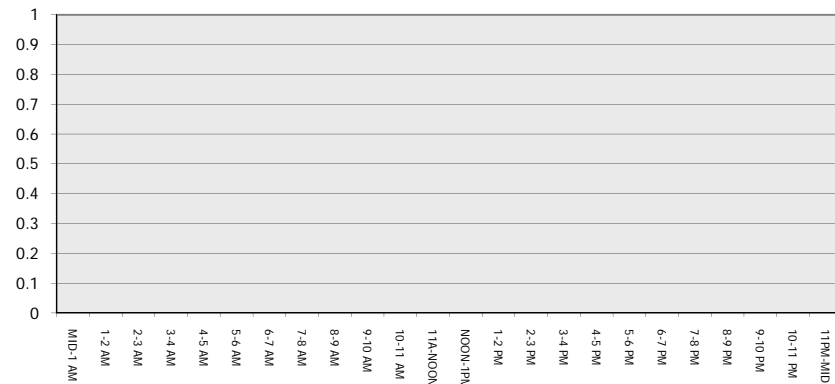
Main Route - Traffic Demand (Vehicles Per Hour)



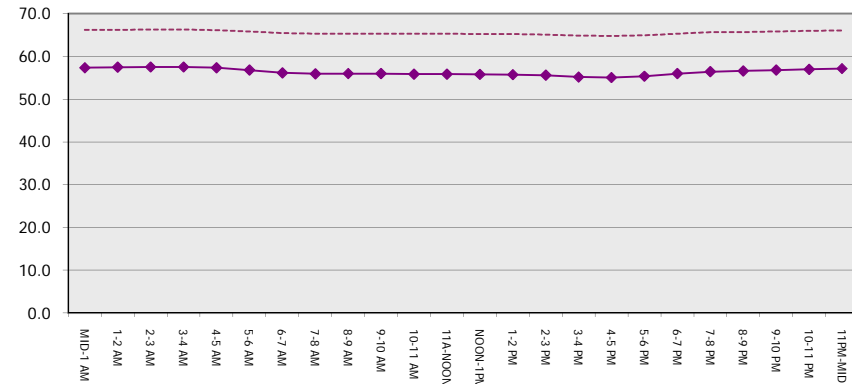
Main Route Average Delay Per Vehicle (Minutes)



Main Route - Average Queue Length (Vehicles)



Main Route - Average Speed (MPH)



IH 43: CTH X TO STH 50 (WALWORTH COUNTY) CONTINUOUS (24 HOUR) CLOSURE DIVERSION ROUTE: CTH X - STH 96 - USH 45	AUGUST
	Analyzed for 2009 Construction Season

SUMMARY OF TRAFFIC MODEL OUTPUT

MON-THUR NORTHBOUND DIRECTION

TIME OF DAY	FLOWS AND CAPACITY IN VEH/HR								AVERAGE SPEEDS IN MPH						
	MAIN		DIVERSION		SITE CAPA CITY	FLOW MAIN ROUTE	FLOW DIVER -TING	TOTAL DIVN FLOW	AV.DEL PER VEH (MINS)	AVERAGE QUEUE (VEH)	MAIN ROUTE		SITE	ALTERNATE ROUTE	
	DEMAND FLOW	PCT HEAVY	NORMAL FLOW	PCT HEAVY							WITHOUT WORK ZN	WITH WORK ZN		WITHOUT WORK ZN	WITH WORK ZN
MID-1 AM	80	0.0	48	0.0	1500	80	0	48	0.43	0	66.3	57.4	45.1	21.7	21.7
1-2 AM	64	0.0	39	0.0	1500	64	0	39	0.43	0	66.3	57.5	45.2	22.0	22.0
2-3 AM	63	0.0	39	0.0	1500	63	0	39	0.43	0	66.3	57.5	45.3	22.0	22.0
3-4 AM	112	0.0	67	0.0	1500	112	0	67	0.43	0	66.2	57.3	45.0	21.2	21.2
4-5 AM	245	0.0	149	0.0	1500	245	0	149	0.45	0	66.0	56.9	44.5	19.1	19.1
5-6 AM	494	0.0	299	0.0	1500	494	0	299	0.47	0	65.5	56.1	43.5	15.1	15.1
6-7 AM	679	0.0	410	0.0	1500	679	0	410	0.49	0	65.1	55.6	42.8	12.3	12.3
7-8 AM	761	0.0	460	0.0	1500	761	0	460	0.50	0	65.0	55.4	42.5	11.6	11.6
8-9 AM	674	0.0	407	0.0	1500	674	0	407	0.49	0	65.1	55.6	42.8	12.3	12.3
9-10 AM	616	0.0	372	0.0	1500	616	0	372	0.48	0	65.3	55.8	43.1	13.2	13.2
10-11 AM	635	0.0	383	0.0	1500	635	0	383	0.48	0	65.2	55.8	43.0	12.9	12.9
11A-NOON	640	0.0	387	0.0	1500	640	0	387	0.48	0	65.2	55.7	43.0	12.7	12.7
NOON-1PM	632	0.0	382	0.0	1500	632	0	382	0.48	0	65.2	55.8	43.0	12.9	12.9
1-2 PM	678	0.0	409	0.0	1500	678	0	409	0.49	0	65.1	55.6	42.8	12.3	12.3
2-3 PM	730	0.0	442	0.0	1500	730	0	442	0.49	0	65.0	55.5	42.7	11.9	11.9
3-4 PM	749	0.0	452	0.0	1500	749	0	452	0.49	0	65.0	55.4	42.6	11.7	11.7
4-5 PM	770	0.0	466	0.0	1500	770	0	466	0.50	0	65.0	55.3	42.5	11.6	11.6
5-6 PM	694	0.0	420	0.0	1500	694	0	420	0.49	0	65.1	55.6	42.8	12.2	12.2
6-7 PM	501	0.0	302	0.0	1500	501	0	302	0.47	0	65.5	56.1	43.5	15.0	15.0
7-8 PM	366	0.0	222	0.0	1500	366	0	222	0.46	0	65.7	56.6	44.0	17.1	17.1
8-9 PM	297	0.0	180	0.0	1500	297	0	180	0.45	0	65.8	56.8	44.3	18.3	18.3
9-10 PM	248	0.0	151	0.0	1500	248	0	151	0.45	0	66.0	56.9	44.5	19.0	19.0
10-11 PM	193	0.0	117	0.0	1500	193	0	117	0.44	0	66.0	57.1	44.7	19.9	19.9
11PM-MID	126	0.0	75	0.0	1500	126	0	75	0.43	0	66.1	57.3	45.0	21.0	21.0

----- SITE BREAKDOWN DELAYS -----	
BREAKDOWN DURATION (MINS)	0
RANGE OF QUEUE DELAY - MIN	0.0
(VEH-H) MAX	0.0
RANGE OF DIVN DELAY - MIN	0.0
(VEH-H) MAX	0.0
AV BREAKDOWNS PER DAY	0.00
AV QUEUE DELAY/DAY (VEH-H)	0.0
AV DIVN DELAY/DAY (VEH-H)	0.0
AV TOTAL DELAY/DAY (VEH-H)	0.0

----- SITE ACCIDENT DELAYS -----	
ACCIDENT DURATION (MINS)	0
RANGE OF QUEUE DELAY - MIN	0.0
(VEH-H) MAX	0.0
RANGE OF DIVN DELAY - MIN	0.0
(VEH-H) MAX	0.0
AV ACCIDENTS PER DAY	0.00
AV QUEUE DELAY/DAY (VEH-H)	0.0
AV DIVN DELAY/DAY (VEH-H)	0.0
AV TOTAL DELAY/DAY (VEH-H)	0.0

AVERAGE ACCIDENT NUMBERS (PIA/DAY)	
MAIN ROUTE WITHOUT WORKS	0.0055
MAIN ROUTE WITH WORKS	0.0047
DIVERSION	0.0256

PIA: Personal Injury Accidents

IMPACTS ON ROAD USERS	
ROAD USER COSTS PER DAY (DOLLARS)	\$1,052
CONGESTED HOURS PER DAY*	0

*Delays Exceeding 15 Minutes

**IH 43: CTH X TO STH 50 (WALWORTH COUNTY)
 CONTINUOUS (24 HOUR) CLOSURE
 DIVERSION ROUTE: CTH X - STH 96 - USH 45**

AUGUST
 Analyzed for 2009
 Construction Season

GRAPHICAL REPRESENTATION OF TRAFFIC MODEL INPUT AND OUTPUT
MON-THUR NORTHBOUND DIRECTION

