

IH 43: CTH X TO STH 50 (WALWORTH COUNTY) CONTINUOUS (24 HOUR) CLOSURE DIVERSION ROUTE: CTH X - STH 96 - USH 45	MAY
	Analyzed for 2009 Construction Season

SUMMARY OF TRAFFIC MODEL OUTPUT

SUNDAY SOUTHBOUND DIRECTION

TIME OF DAY	FLOWS AND CAPACITY IN VEH/HR						AVERAGE SPEEDS IN MPH								
	MAIN ROUTE		ALTERNATE ROUTE		SITE CAPA CITY	FLOW MAIN ROUTE	FLOW DIVER -TING	TOTAL DIVN FLOW	AV.DEL PER VEH (MINS)	AVERAGE QUEUE (VEH)	MAIN ROUTE		ALTERNATE ROUTE		
	DEMAND FLOW	PCT HEAVY	NORMAL FLOW	PCT HEAVY							WITHOUT WORK ZN	WITH WORK ZN	SITE	WITHOUT WORK ZN	WITH WORK ZN
MID-1 AM	106	0.0	64	0.0	1500	106	0	64	0.43	0	66.2	57.4	45.1	21.3	21.3
1-2 AM	64	0.0	39	0.0	1500	64	0	39	0.43	0	66.3	57.5	45.2	22.0	22.0
2-3 AM	52	0.0	31	0.0	1500	52	0	31	0.43	0	66.3	57.5	45.3	22.2	22.2
3-4 AM	40	0.0	24	0.0	1500	40	0	24	0.43	0	66.3	57.6	45.3	22.4	22.4
4-5 AM	30	0.0	19	0.0	1500	30	0	19	0.43	0	66.3	57.6	45.4	22.5	22.5
5-6 AM	61	0.0	37	0.0	1500	61	0	37	0.43	0	66.3	57.5	45.3	22.0	22.0
6-7 AM	108	0.0	65	0.0	1500	108	0	65	0.43	0	66.2	57.3	45.1	21.2	21.2
7-8 AM	203	0.0	122	0.0	1500	203	0	122	0.44	0	66.0	57.1	44.6	19.7	19.7
8-9 AM	329	0.0	199	0.0	1500	329	0	199	0.45	0	65.8	56.6	44.2	17.8	17.8
9-10 AM	440	0.0	267	0.0	1500	440	0	267	0.47	0	65.6	56.3	43.7	16.0	16.0
10-11 AM	538	0.0	325	0.0	1500	538	0	325	0.47	0	65.4	56.0	43.3	14.4	14.4
11A-NOON	593	0.0	359	0.0	1500	593	0	359	0.48	0	65.3	55.9	43.2	13.5	13.5
NOON-1PM	642	0.0	388	0.0	1500	642	0	388	0.48	0	65.2	55.7	43.0	12.7	12.7
1-2 PM	617	0.0	374	0.0	1500	617	0	374	0.48	0	65.2	55.8	43.0	13.1	13.1
2-3 PM	576	0.0	348	0.0	1500	576	0	348	0.48	0	65.3	55.9	43.2	13.8	13.8
3-4 PM	622	0.0	376	0.0	1500	622	0	376	0.48	0	65.2	55.8	43.0	13.0	13.0
4-5 PM	651	0.0	393	0.0	1500	651	0	393	0.49	0	65.1	55.7	42.9	12.6	12.6
5-6 PM	655	0.0	397	0.0	1500	655	0	397	0.49	0	65.1	55.7	42.9	12.5	12.5
6-7 PM	508	0.0	308	0.0	1500	508	0	308	0.47	0	65.5	56.1	43.5	14.8	14.8
7-8 PM	433	0.0	263	0.0	1500	433	0	263	0.46	0	65.6	56.3	43.8	16.0	16.0
8-9 PM	352	0.0	212	0.0	1500	352	0	212	0.46	0	65.7	56.6	44.1	17.4	17.4
9-10 PM	258	0.0	156	0.0	1500	258	0	156	0.45	0	65.9	56.9	44.5	18.9	18.9
10-11 PM	165	0.0	99	0.0	1500	165	0	99	0.44	0	66.1	57.2	44.8	20.4	20.4
11PM-MID	113	0.0	68	0.0	1500	113	0	68	0.43	0	66.2	57.3	45.0	21.2	21.2

----- SITE BREAKDOWN DELAYS -----	
BREAKDOWN DURATION (MINS)	0
RANGE OF QUEUE DELAY - MIN	0.0
(VEH-H) MAX	0.0
RANGE OF DIVN DELAY - MIN	0.0
(VEH-H) MAX	0.0
AV BREAKDOWNS PER DAY	0.00
AV QUEUE DELAY/DAY (VEH-H)	0.0
AV DIVN DELAY/DAY (VEH-H)	0.0
AV TOTAL DELAY/DAY (VEH-H)	0.0

----- SITE ACCIDENT DELAYS -----	
ACCIDENT DURATION (MINS)	0
RANGE OF QUEUE DELAY - MIN	0.0
(VEH-H) MAX	0.0
RANGE OF DIVN DELAY - MIN	0.0
(VEH-H) MAX	0.0
AV ACCIDENTS PER DAY	0.00
AV QUEUE DELAY/DAY (VEH-H)	0.0
AV DIVN DELAY/DAY (VEH-H)	0.0
AV TOTAL DELAY/DAY (VEH-H)	0.0

AVERAGE ACCIDENT NUMBERS (PIA/DAY)	
MAIN ROUTE WITHOUT WORKS	0.0040
MAIN ROUTE WITH WORKS	0.0035
DIVERSION	0.0189

PIA: Personal Injury Accidents

IMPACTS ON ROAD USERS	
ROAD USER COSTS PER DAY (DOLLARS)	\$978
CONGESTED HOURS PER DAY*	0

*Delays Exceeding 15 Minutes

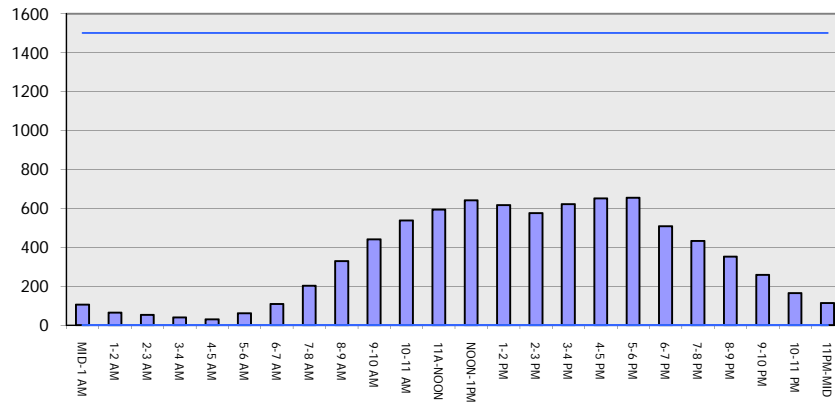
IH 43: CTH X TO STH 50 (WALWORTH COUNTY)
CONTINUOUS (24 HOUR) CLOSURE
DIVERSION ROUTE: CTH X - STH 96 - USH 45

MAY
 Analyzed for 2009
 Construction Season

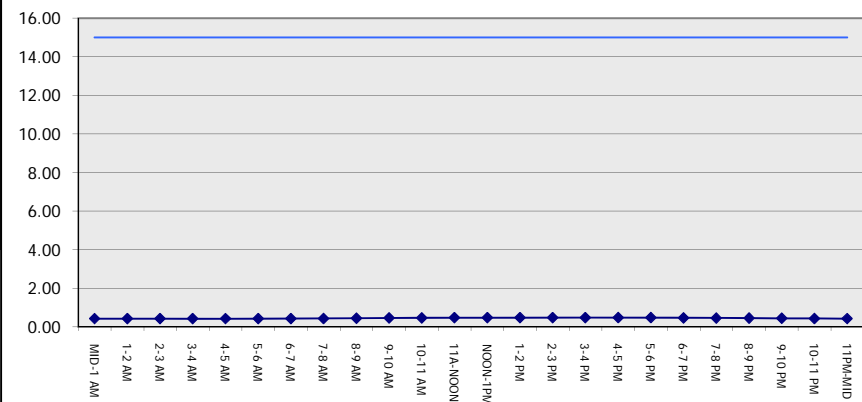
GRAPHICAL REPRESENTATION OF TRAFFIC MODEL INPUT AND OUTPUT

SUNDAY SOUTHBOUND DIRECTION

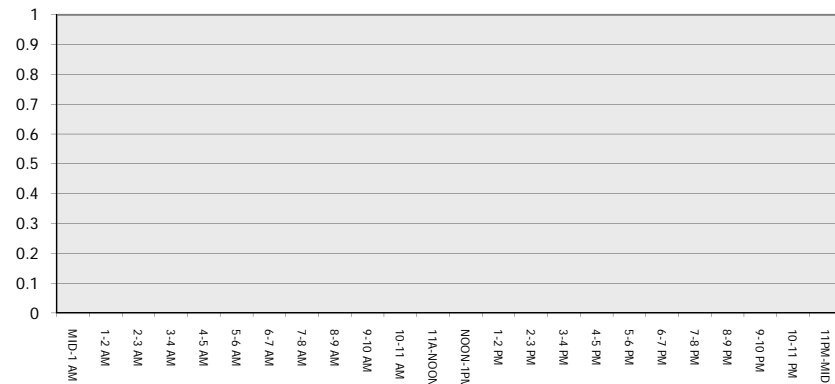
Main Route - Traffic Demand (Vehicles Per Hour)



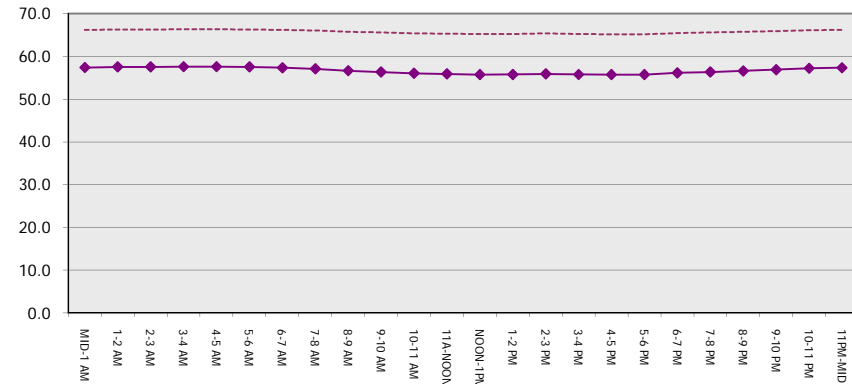
Main Route Average Delay Per Vehicle (Minutes)



Main Route - Average Queue Length (Vehicles)



Main Route - Average Speed (MPH)



IH 43: CTH X TO STH 50 (WALWORTH COUNTY) CONTINUOUS (24 HOUR) CLOSURE DIVERSION ROUTE: CTH X - STH 96 - USH 45	MAY
	Analyzed for 2009 Construction Season

SUMMARY OF TRAFFIC MODEL OUTPUT

SUNDAY NORTHBOUND DIRECTION

TIME OF DAY	FLOWS AND CAPACITY IN VEH/HR								AVERAGE SPEEDS IN MPH						
	MAIN		DIVERSION		SITE CAPA CITY	FLOW MAIN ROUTE	FLOW DIVER -TING	TOTAL DIVN FLOW	AV.DEL PER VEH (MINS)	AVERAGE QUEUE (VEH)	MAIN ROUTE		SITE	ALTERNATE ROUTE	
	DEMAND FLOW	PCT HEAVY	NORMAL FLOW	PCT HEAVY							WITHOUT WORK ZN	WITH WORK ZN		WITHOUT WORK ZN	WITH WORK ZN
MID-1 AM	81	0.0	49	0.0	1500	81	0	49	0.43	0	66.3	57.4	45.1	21.7	21.7
1-2 AM	59	0.0	36	0.0	1500	59	0	36	0.43	0	66.3	57.5	45.3	22.0	22.0
2-3 AM	80	0.0	48	0.0	1500	80	0	48	0.43	0	66.3	57.4	45.1	21.7	21.7
3-4 AM	52	0.0	31	0.0	1500	52	0	31	0.43	0	66.3	57.5	45.3	22.2	22.2
4-5 AM	53	0.0	31	0.0	1500	53	0	31	0.43	0	66.3	57.5	45.3	22.2	22.2
5-6 AM	81	0.0	49	0.0	1500	81	0	49	0.43	0	66.3	57.4	45.1	21.7	21.7
6-7 AM	145	0.0	88	0.0	1500	145	0	88	0.44	0	66.1	57.3	44.9	20.7	20.7
7-8 AM	208	0.0	126	0.0	1500	208	0	126	0.44	0	66.0	57.0	44.6	19.7	19.7
8-9 AM	289	0.0	175	0.0	1500	289	0	175	0.45	0	65.8	56.8	44.3	18.4	18.4
9-10 AM	414	0.0	250	0.0	1500	414	0	250	0.46	0	65.6	56.4	43.8	16.4	16.4
10-11 AM	573	0.0	346	0.0	1500	573	0	346	0.48	0	65.3	56.0	43.2	13.8	13.8
11A-NOON	654	0.0	396	0.0	1500	654	0	396	0.49	0	65.1	55.7	42.9	12.5	12.5
NOON-1PM	617	0.0	374	0.0	1500	617	0	374	0.48	0	65.2	55.8	43.0	13.1	13.1
1-2 PM	626	0.0	379	0.0	1500	626	0	379	0.48	0	65.2	55.8	43.0	13.0	13.0
2-3 PM	626	0.0	379	0.0	1500	626	0	379	0.48	0	65.2	55.8	43.0	13.0	13.0
3-4 PM	705	0.0	426	0.0	1500	705	0	426	0.49	0	65.1	55.5	42.7	12.0	12.0
4-5 PM	766	0.0	464	0.0	1500	766	0	464	0.50	0	65.0	55.3	42.5	11.6	11.6
5-6 PM	716	0.0	433	0.0	1500	716	0	433	0.49	0	65.1	55.5	42.7	12.0	12.0
6-7 PM	627	0.0	379	0.0	1500	627	0	379	0.48	0	65.2	55.8	43.0	13.0	13.0
7-8 PM	561	0.0	339	0.0	1500	561	0	339	0.48	0	65.3	56.0	43.3	14.0	14.0
8-9 PM	421	0.0	254	0.0	1500	421	0	254	0.46	0	65.6	56.4	43.8	16.3	16.3
9-10 PM	337	0.0	204	0.0	1500	337	0	204	0.46	0	65.8	56.6	44.2	17.6	17.6
10-11 PM	227	0.0	137	0.0	1500	227	0	137	0.44	0	66.0	56.9	44.6	19.4	19.4
11PM-MID	134	0.0	81	0.0	1500	134	0	81	0.44	0	66.1	57.3	45.0	20.9	20.9

----- SITE BREAKDOWN DELAYS -----	
BREAKDOWN DURATION (MINS)	0
RANGE OF QUEUE DELAY - MIN	0.0
(VEH-H) MAX	0.0
RANGE OF DIVN DELAY - MIN	0.0
(VEH-H) MAX	0.0
AV BREAKDOWNS PER DAY	0.00
AV QUEUE DELAY/DAY (VEH-H)	0.0
AV DIVN DELAY/DAY (VEH-H)	0.0
AV TOTAL DELAY/DAY (VEH-H)	0.0

----- SITE ACCIDENT DELAYS -----	
ACCIDENT DURATION (MINS)	0
RANGE OF QUEUE DELAY - MIN	0.0
(VEH-H) MAX	0.0
RANGE OF DIVN DELAY - MIN	0.0
(VEH-H) MAX	0.0
AV ACCIDENTS PER DAY	0.00
AV QUEUE DELAY/DAY (VEH-H)	0.0
AV DIVN DELAY/DAY (VEH-H)	0.0
AV TOTAL DELAY/DAY (VEH-H)	0.0

AVERAGE ACCIDENT NUMBERS (PIA/DAY)	
MAIN ROUTE WITHOUT WORKS	0.0045
MAIN ROUTE WITH WORKS	0.0039
DIVERSION	0.0210

PIA: Personal Injury Accidents

IMPACTS ON ROAD USERS	
ROAD USER COSTS PER DAY (DOLLARS)	\$1,096
CONGESTED HOURS PER DAY*	0

*Delays Exceeding 15 Minutes

**IH 43: CTH X TO STH 50 (WALWORTH COUNTY)
 CONTINUOUS (24 HOUR) CLOSURE
 DIVERSION ROUTE: CTH X - STH 96 - USH 45**

MAY
 Analyzed for 2009
 Construction Season

GRAPHICAL REPRESENTATION OF TRAFFIC MODEL INPUT AND OUTPUT
SUNDAY NORTHBOUND DIRECTION

