

**IH 43: CTH X TO STH 50 (WALWORTH COUNTY)  
CONTINUOUS (24 HOUR) CLOSURE  
DIVERSION ROUTE: CTH X - STH 96 - USH 45**

**MAY**  
Analyzed for 2009  
Construction Season

**SUMMARY OF TRAFFIC MODEL OUTPUT**  
**SATURDAY SOUTHBOUND DIRECTION**

TIME OF DAY	FLOWS AND CAPACITY IN VEH/HR								AVERAGE SPEEDS IN MPH						
	MAIN ROUTE		ALTERNATE ROUTE		SITE CAPA CITY	FLOW MAIN ROUTE	FLOW DIVER -TING	TOTAL DIVN FLOW	AV.DEL PER VEH (MINS)	AVERAGE QUEUE (VEH)	MAIN ROUTE		ALTERNATE ROUTE		
	DEMAND FLOW	PCT HEAVY	NORMAL FLOW	PCT HEAVY							WITHOUT WORK ZN	WITH WORK ZN	SITE	WITHOUT WORK ZN	WITH WORK ZN
MID-1 AM	132	0.0	80	0.0	1500	132	0	80	0.44	0	66.1	57.3	45.0	20.9	20.9
1-2 AM	85	0.0	51	0.0	1500	85	0	51	0.43	0	66.2	57.4	45.1	21.6	21.6
2-3 AM	72	0.0	44	0.0	1500	72	0	44	0.43	0	66.3	57.4	45.2	21.8	21.8
3-4 AM	57	0.0	35	0.0	1500	57	0	35	0.43	0	66.3	57.5	45.3	22.0	22.0
4-5 AM	81	0.0	49	0.0	1500	81	0	49	0.43	0	66.3	57.4	45.1	21.7	21.7
5-6 AM	127	0.0	76	0.0	1500	127	0	76	0.43	0	66.1	57.3	45.0	21.0	21.0
6-7 AM	233	0.0	141	0.0	1500	233	0	141	0.45	0	66.0	56.9	44.5	19.3	19.3
7-8 AM	350	0.0	211	0.0	1500	350	0	211	0.46	0	65.8	56.6	44.1	17.4	17.4
8-9 AM	475	0.0	288	0.0	1500	475	0	288	0.47	0	65.5	56.2	43.6	15.4	15.4
9-10 AM	574	0.0	347	0.0	1500	574	0	347	0.48	0	65.3	56.0	43.2	13.8	13.8
10-11 AM	640	0.0	387	0.0	1500	640	0	387	0.48	0	65.2	55.7	43.0	12.7	12.7
11A-NOON	613	0.0	370	0.0	1500	613	0	370	0.48	0	65.3	55.8	43.1	13.2	13.2
NOON-1PM	634	0.0	384	0.0	1500	634	0	384	0.48	0	65.2	55.8	43.0	12.9	12.9
1-2 PM	614	0.0	371	0.0	1500	614	0	371	0.48	0	65.3	55.8	43.1	13.2	13.2
2-3 PM	600	0.0	363	0.0	1500	600	0	363	0.48	0	65.3	55.8	43.2	13.4	13.4
3-4 PM	564	0.0	341	0.0	1500	564	0	341	0.48	0	65.3	56.0	43.3	14.0	14.0
4-5 PM	568	0.0	343	0.0	1500	568	0	343	0.48	0	65.3	56.0	43.2	13.9	13.9
5-6 PM	533	0.0	322	0.0	1500	533	0	322	0.47	0	65.4	56.1	43.4	14.5	14.5
6-7 PM	444	0.0	269	0.0	1500	444	0	269	0.47	0	65.6	56.3	43.7	15.9	15.9
7-8 PM	413	0.0	250	0.0	1500	413	0	250	0.46	0	65.6	56.4	43.8	16.4	16.4
8-9 PM	357	0.0	216	0.0	1500	357	0	216	0.46	0	65.7	56.6	44.0	17.3	17.3
9-10 PM	328	0.0	198	0.0	1500	328	0	198	0.45	0	65.8	56.7	44.2	17.8	17.8
10-11 PM	267	0.0	161	0.0	1500	267	0	161	0.45	0	65.9	56.9	44.4	18.8	18.8
11PM-MID	187	0.0	113	0.0	1500	187	0	113	0.44	0	66.0	57.1	44.7	20.0	20.0

*----- SITE BREAKDOWN DELAYS -----*	
BREAKDOWN DURATION (MINS)	0
RANGE OF QUEUE DELAY - MIN	0.0
(VEH-H) MAX	0.0
RANGE OF DIVN DELAY - MIN	0.0
(VEH-H) MAX	0.0
AV BREAKDOWNS PER DAY	0.00
AV QUEUE DELAY/DAY (VEH-H)	0.0
AV DIVN DELAY/DAY (VEH-H)	0.0
AV TOTAL DELAY/DAY (VEH-H)	0.0

*----- SITE ACCIDENT DELAYS -----*	
ACCIDENT DURATION (MINS)	0
RANGE OF QUEUE DELAY - MIN	0.0
(VEH-H) MAX	0.0
RANGE OF DIVN DELAY - MIN	0.0
(VEH-H) MAX	0.0
AV ACCIDENTS PER DAY	0.00
AV QUEUE DELAY/DAY (VEH-H)	0.0
AV DIVN DELAY/DAY (VEH-H)	0.0
AV TOTAL DELAY/DAY (VEH-H)	0.0

AVERAGE ACCIDENT NUMBERS (PIA/DAY)	
MAIN ROUTE WITHOUT WORKS	0.0044
MAIN ROUTE WITH WORKS	0.0038
DIVERSION	0.0208

PIA: Personal Injury Accidents

IMPACTS ON ROAD USERS	
ROAD USER COSTS PER DAY ( DOLLARS)	\$1,051
CONGESTED HOURS PER DAY*	0

\*Delays Exceeding 15 Minutes

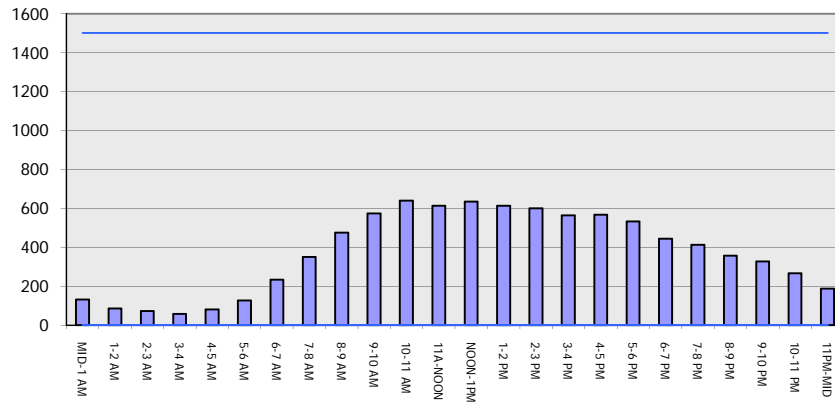
**IH 43: CTH X TO STH 50 (WALWORTH COUNTY)**  
**CONTINUOUS (24 HOUR) CLOSURE**  
**DIVERSION ROUTE: CTH X - STH 96 - USH 45**

**MAY**  
 Analyzed for 2009  
 Construction Season

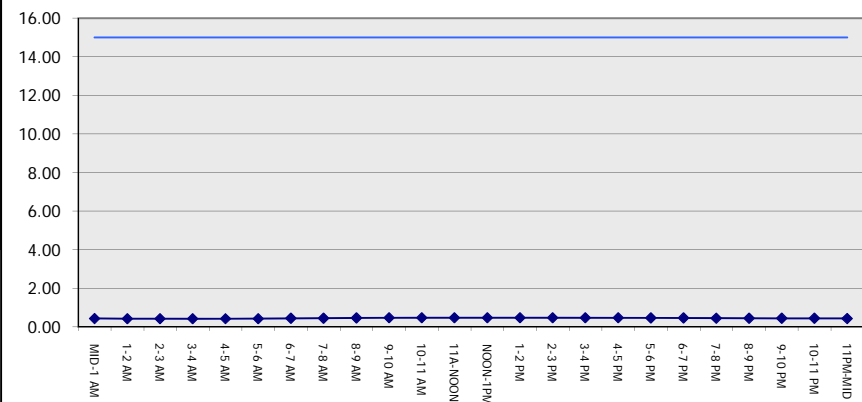
**GRAPHICAL REPRESENTATION OF TRAFFIC MODEL INPUT AND OUTPUT**

**SATURDAY SOUTHBOUND DIRECTION**

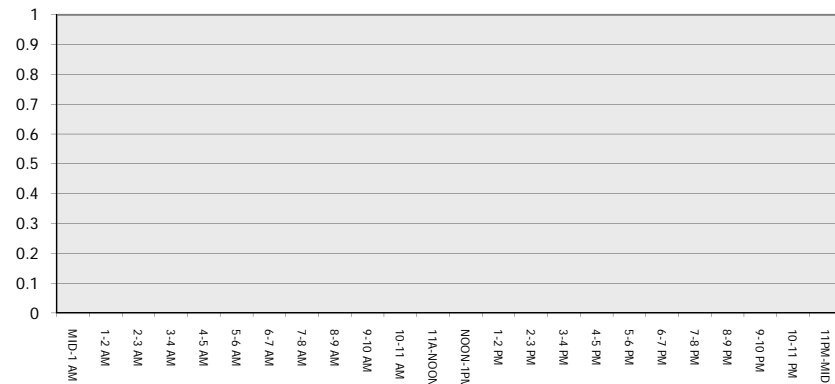
**Main Route - Traffic Demand (Vehicles Per Hour)**



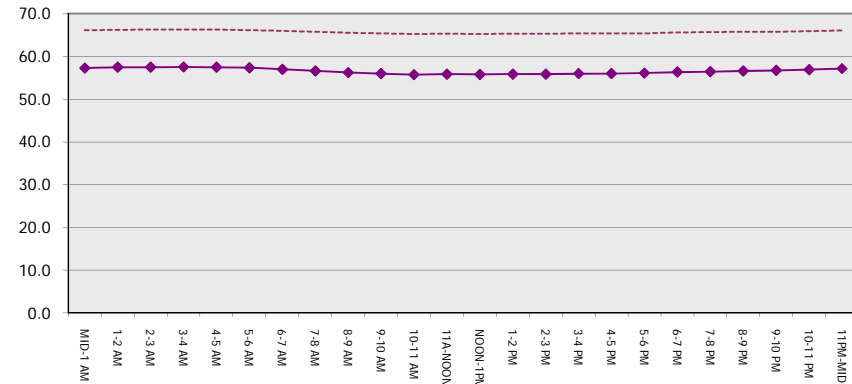
**Main Route Average Delay Per Vehicle (Minutes)**



**Main Route - Average Queue Length (Vehicles)**



**Main Route - Average Speed (MPH)**



<b>IH 43: CTH X TO STH 50 (WALWORTH COUNTY)</b> <b>CONTINUOUS (24 HOUR) CLOSURE</b> <b>DIVERSION ROUTE: CTH X - STH 96 - USH 45</b>	<b>MAY</b>
	Analyzed for 2009 Construction Season

**SUMMARY OF TRAFFIC MODEL OUTPUT**

SATURDAY NORTHBOUND DIRECTION

TIME OF DAY	FLOWS AND CAPACITY IN VEH/HR								AVERAGE SPEEDS IN MPH						
	MAIN		DIVERSION		SITE CAPA CITY	FLOW MAIN ROUTE	FLOW DIVER -TING	TOTAL DIVN FLOW	AV.DEL PER VEH (MINS)	AVERAGE QUEUE (VEH)	MAIN ROUTE		SITE	ALTERNATE ROUTE	
	DEMAND FLOW	PCT HEAVY	NORMAL FLOW	PCT HEAVY							WITHOUT WORK ZN	WITH WORK ZN		WITHOUT WORK ZN	WITH WORK ZN
MID-1 AM	111	0.0	67	0.0	1500	111	0	67	0.43	0	66.2	57.3	45.0	21.2	21.2
1-2 AM	65	0.0	39	0.0	1500	65	0	39	0.43	0	66.3	57.5	45.2	22.0	22.0
2-3 AM	80	0.0	48	0.0	1500	80	0	48	0.43	0	66.3	57.4	45.1	21.7	21.7
3-4 AM	74	0.0	45	0.0	1500	74	0	45	0.43	0	66.3	57.4	45.2	21.8	21.8
4-5 AM	111	0.0	67	0.0	1500	111	0	67	0.43	0	66.2	57.3	45.0	21.2	21.2
5-6 AM	183	0.0	111	0.0	1500	183	0	111	0.44	0	66.1	57.1	44.8	20.1	20.1
6-7 AM	241	0.0	146	0.0	1500	241	0	146	0.45	0	66.0	56.9	44.5	19.1	19.1
7-8 AM	346	0.0	209	0.0	1500	346	0	209	0.46	0	65.8	56.6	44.1	17.5	17.5
8-9 AM	445	0.0	270	0.0	1500	445	0	270	0.47	0	65.6	56.3	43.7	15.8	15.8
9-10 AM	538	0.0	325	0.0	1500	538	0	325	0.47	0	65.4	56.0	43.3	14.4	14.4
10-11 AM	595	0.0	360	0.0	1500	595	0	360	0.48	0	65.3	55.8	43.2	13.5	13.5
11A-NOON	664	0.0	402	0.0	1500	664	0	402	0.49	0	65.1	55.6	42.9	12.4	12.4
NOON-1PM	641	0.0	388	0.0	1500	641	0	388	0.48	0	65.2	55.7	43.0	12.7	12.7
1-2 PM	638	0.0	386	0.0	1500	638	0	386	0.48	0	65.2	55.7	43.0	12.8	12.8
2-3 PM	595	0.0	360	0.0	1500	595	0	360	0.48	0	65.3	55.8	43.2	13.5	13.5
3-4 PM	594	0.0	360	0.0	1500	594	0	360	0.48	0	65.3	55.9	43.2	13.5	13.5
4-5 PM	599	0.0	362	0.0	1500	599	0	362	0.48	0	65.3	55.8	43.2	13.4	13.4
5-6 PM	563	0.0	340	0.0	1500	563	0	340	0.48	0	65.3	56.0	43.3	14.0	14.0
6-7 PM	439	0.0	266	0.0	1500	439	0	266	0.47	0	65.6	56.3	43.7	16.0	16.0
7-8 PM	363	0.0	220	0.0	1500	363	0	220	0.46	0	65.7	56.6	44.0	17.2	17.2
8-9 PM	340	0.0	206	0.0	1500	340	0	206	0.46	0	65.8	56.6	44.2	17.5	17.5
9-10 PM	268	0.0	162	0.0	1500	268	0	162	0.45	0	65.9	56.8	44.4	18.7	18.7
10-11 PM	222	0.0	135	0.0	1500	222	0	135	0.44	0	66.0	57.0	44.6	19.4	19.4
11PM-MID	146	0.0	89	0.0	1500	146	0	89	0.44	0	66.1	57.3	44.9	20.6	20.6

*----- SITE BREAKDOWN DELAYS -----*	
BREAKDOWN DURATION (MINS)	0
RANGE OF QUEUE DELAY - MIN	0.0
(VEH-H) MAX	0.0
RANGE OF DIVN DELAY - MIN	0.0
(VEH-H) MAX	0.0
AV BREAKDOWNS PER DAY	0.00
AV QUEUE DELAY/DAY (VEH-H)	0.0
AV DIVN DELAY/DAY (VEH-H)	0.0
AV TOTAL DELAY/DAY (VEH-H)	0.0

*----- SITE ACCIDENT DELAYS -----*	
ACCIDENT DURATION (MINS)	0
RANGE OF QUEUE DELAY - MIN	0.0
(VEH-H) MAX	0.0
RANGE OF DIVN DELAY - MIN	0.0
(VEH-H) MAX	0.0
AV ACCIDENTS PER DAY	0.00
AV QUEUE DELAY/DAY (VEH-H)	0.0
AV DIVN DELAY/DAY (VEH-H)	0.0
AV TOTAL DELAY/DAY (VEH-H)	0.0

AVERAGE ACCIDENT NUMBERS (PIA/DAY)	
MAIN ROUTE WITHOUT WORKS	0.0044
MAIN ROUTE WITH WORKS	0.0038
DIVERSION	0.0206

PIA: Personal Injury Accidents

IMPACTS ON ROAD USERS	
ROAD USER COSTS PER DAY ( DOLLARS)	\$1,043
CONGESTED HOURS PER DAY*	0

\*Delays Exceeding 15 Minutes

**IH 43: CTH X TO STH 50 (WALWORTH COUNTY)**  
**CONTINUOUS (24 HOUR) CLOSURE**  
**DIVERSION ROUTE: CTH X - STH 96 - USH 45**

**MAY**  
 Analyzed for 2009  
 Construction Season

**GRAPHICAL REPRESENTATION OF TRAFFIC MODEL INPUT AND OUTPUT**  
**SATURDAY NORTHBOUND DIRECTION**

