

IH 43: BOWERS RD TO STH 11 (WALWORTH COUNTY) CONTINUOUS (24 HOUR) CLOSURE DIVERSION ROUTE: STH 11 - BOWERS RD	AUGUST
	Analyzed for 2009 Construction Season

SUMMARY OF TRAFFIC MODEL OUTPUT

SATURDAY SOUTHBOUND DIRECTION

TIME OF DAY	FLOWS AND CAPACITY IN VEH/HR								AVERAGE SPEEDS IN MPH						
	MAIN ROUTE		ALTERNATE ROUTE		SITE CAPA CITY	FLOW MAIN ROUTE	FLOW DIVER -TING	TOTAL DIVN FLOW	AV.DEL PER VEH (MINS)	AVERAGE QUEUE (VEH)	MAIN ROUTE		ALTERNATE ROUTE		
	DEMAND FLOW	PCT HEAVY	NORMAL FLOW	PCT HEAVY							WITHOUT WORK ZN	WITH WORK ZN	SITE	WITHOUT WORK ZN	WITH WORK ZN
MID-1 AM	183	0.0	46	0.0	1500	183	0	46	0.44	0	66.1	60.1	44.8	38.9	38.9
1-2 AM	97	0.0	24	0.0	1500	97	0	24	0.43	0	66.2	60.4	45.1	39.0	39.0
2-3 AM	66	0.0	17	0.0	1500	66	0	17	0.43	0	66.3	60.4	45.2	39.1	39.1
3-4 AM	59	0.0	15	0.0	1500	59	0	15	0.43	0	66.3	60.4	45.3	39.1	39.1
4-5 AM	87	0.0	22	0.0	1500	87	0	22	0.43	0	66.2	60.4	45.1	39.1	39.1
5-6 AM	149	0.0	38	0.0	1500	149	0	38	0.44	0	66.1	60.2	44.9	38.9	38.9
6-7 AM	282	0.0	71	0.0	1500	282	0	71	0.45	0	65.9	59.8	44.3	38.8	38.8
7-8 AM	430	0.0	108	0.0	1500	430	0	108	0.46	0	65.6	59.4	43.8	38.7	38.7
8-9 AM	540	0.0	136	0.0	1500	540	0	136	0.47	0	65.4	59.1	43.3	38.6	38.6
9-10 AM	616	0.0	155	0.0	1500	616	0	155	0.48	0	65.3	58.9	43.1	38.5	38.5
10-11 AM	715	0.0	180	0.0	1500	715	0	180	0.49	0	65.1	58.7	42.7	38.4	38.4
11A-NOON	709	0.0	179	0.0	1500	709	0	179	0.49	0	65.1	58.7	42.7	38.4	38.4
NOON-1PM	707	0.0	178	0.0	1500	707	0	178	0.49	0	65.1	58.7	42.7	38.4	38.4
1-2 PM	663	0.0	167	0.0	1500	663	0	167	0.49	0	65.1	58.8	42.9	38.4	38.4
2-3 PM	647	0.0	163	0.0	1500	647	0	163	0.49	0	65.2	58.9	43.0	38.4	38.4
3-4 PM	630	0.0	159	0.0	1500	630	0	159	0.48	0	65.2	58.9	43.0	38.4	38.4
4-5 PM	647	0.0	163	0.0	1500	647	0	163	0.49	0	65.2	58.9	43.0	38.4	38.4
5-6 PM	627	0.0	158	0.0	1500	627	0	158	0.48	0	65.2	58.9	43.0	38.4	38.4
6-7 PM	525	0.0	132	0.0	1500	525	0	132	0.47	0	65.4	59.2	43.4	38.6	38.6
7-8 PM	493	0.0	125	0.0	1500	493	0	125	0.47	0	65.5	59.2	43.5	38.6	38.6
8-9 PM	458	0.0	115	0.0	1500	458	0	115	0.47	0	65.5	59.4	43.7	38.6	38.6
9-10 PM	479	0.0	120	0.0	1500	479	0	120	0.47	0	65.5	59.3	43.6	38.6	38.6
10-11 PM	407	0.0	103	0.0	1500	407	0	103	0.46	0	65.6	59.5	43.8	38.7	38.7
11PM-MID	336	0.0	85	0.0	1500	336	0	85	0.46	0	65.8	59.7	44.2	38.8	38.8

----- SITE BREAKDOWN DELAYS -----	
BREAKDOWN DURATION (MINS)	0
RANGE OF QUEUE DELAY - MIN	0.0
(VEH-H) MAX	0.0
RANGE OF DIVN DELAY - MIN	0.0
(VEH-H) MAX	0.0
AV BREAKDOWNS PER DAY	0.00
AV QUEUE DELAY/DAY (VEH-H)	0.0
AV DIVN DELAY/DAY (VEH-H)	0.0
AV TOTAL DELAY/DAY (VEH-H)	0.0

----- SITE ACCIDENT DELAYS -----	
ACCIDENT DURATION (MINS)	0
RANGE OF QUEUE DELAY - MIN	0.0
(VEH-H) MAX	0.0
RANGE OF DIVN DELAY - MIN	0.0
(VEH-H) MAX	0.0
AV ACCIDENTS PER DAY	0.00
AV QUEUE DELAY/DAY (VEH-H)	0.0
AV DIVN DELAY/DAY (VEH-H)	0.0
AV TOTAL DELAY/DAY (VEH-H)	0.0

AVERAGE ACCIDENT NUMBERS (PIA/DAY)	
MAIN ROUTE WITHOUT WORKS	0.0082
MAIN ROUTE WITH WORKS	0.0075
DIVERSION	0.0260

PIA: Personal Injury Accidents

IMPACTS ON ROAD USERS	
ROAD USER COSTS PER DAY (DOLLARS)	\$1,259
CONGESTED HOURS PER DAY*	0

*Delays Exceeding 15 Minutes

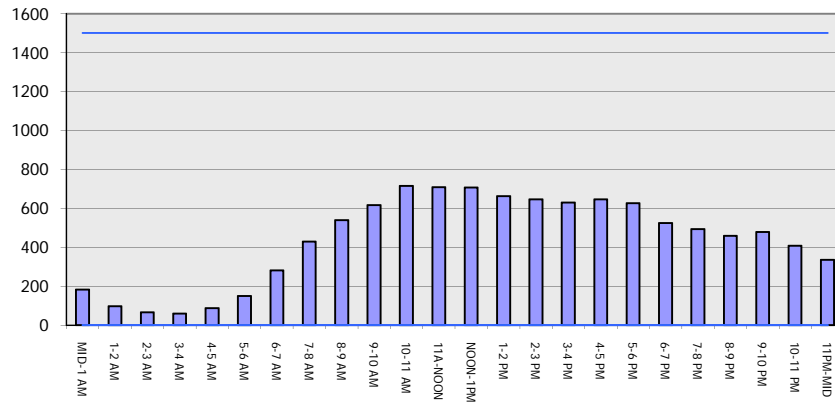
IH 43: BOWERS RD TO STH 11 (WALWORTH COUNTY)
CONTINUOUS (24 HOUR) CLOSURE
DIVERSION ROUTE: STH 11 - BOWERS RD

AUGUST
 Analyzed for 2009
 Construction Season

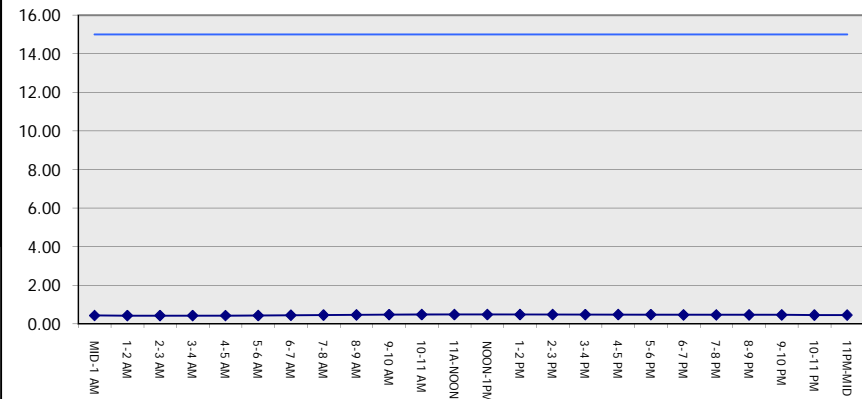
GRAPHICAL REPRESENTATION OF TRAFFIC MODEL INPUT AND OUTPUT

SATURDAY SOUTHBOUND DIRECTION

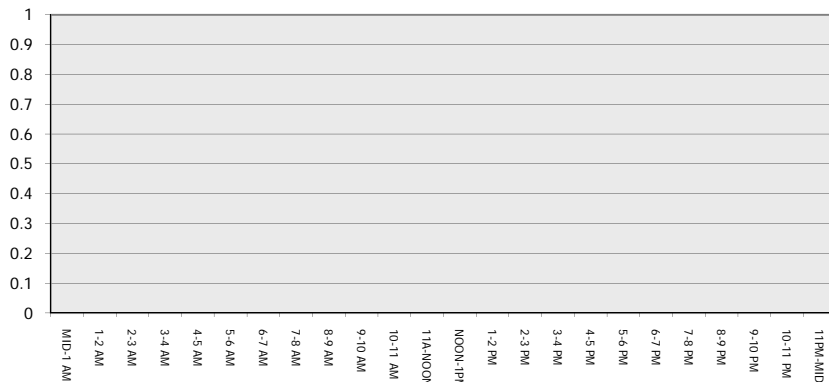
Main Route - Traffic Demand (Vehicles Per Hour)



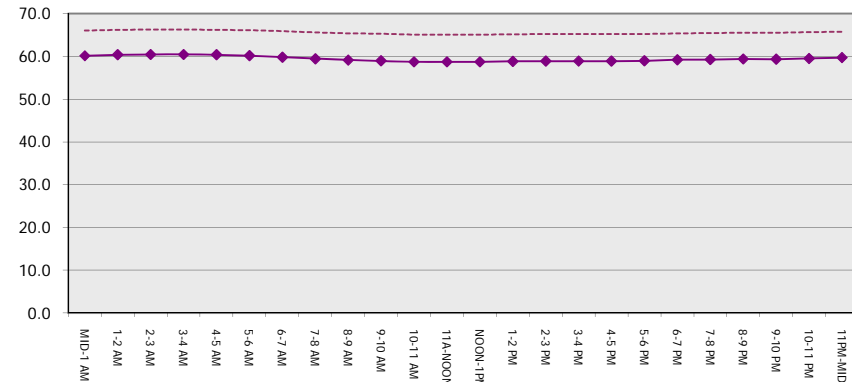
Main Route Average Delay Per Vehicle (Minutes)



Main Route - Average Queue Length (Vehicles)



Main Route - Average Speed (MPH)



IH 43: BOWERS RD TO STH 11 (WALWORTH COUNTY) CONTINUOUS (24 HOUR) CLOSURE DIVERSION ROUTE: STH 11 - BOWERS RD	AUGUST
	Analyzed for 2009 Construction Season

SUMMARY OF TRAFFIC MODEL OUTPUT

SATURDAY NORTHBOUND DIRECTION

TIME OF DAY	FLOWS AND CAPACITY IN VEH/HR								AVERAGE SPEEDS IN MPH						
	MAIN		DIVERSION		SITE CAPA CITY	FLOW MAIN ROUTE	FLOW DIVER -TING	TOTAL DIVN FLOW	AV.DEL PER VEH (MINS)	AVERAGE QUEUE (VEH)	MAIN ROUTE		SITE	ALTERNATE ROUTE	
	DEMAND FLOW	PCT HEAVY	NORMAL FLOW	PCT HEAVY							WITHOUT WORK ZN	WITH WORK ZN		WITHOUT WORK ZN	WITH WORK ZN
MID-1 AM	96	0.0	24	0.0	1500	96	0	24	0.43	0	66.2	60.4	45.1	39.0	39.0
1-2 AM	77	0.0	20	0.0	1500	77	0	20	0.43	0	66.3	60.4	45.2	39.1	39.1
2-3 AM	90	0.0	23	0.0	1500	90	0	23	0.43	0	66.2	60.4	45.1	39.0	39.0
3-4 AM	81	0.0	21	0.0	1500	81	0	21	0.43	0	66.3	60.4	45.1	39.1	39.1
4-5 AM	126	0.0	31	0.0	1500	126	0	31	0.43	0	66.1	60.2	45.0	39.0	39.0
5-6 AM	191	0.0	48	0.0	1500	191	0	48	0.44	0	66.0	60.1	44.7	38.9	38.9
6-7 AM	274	0.0	69	0.0	1500	274	0	69	0.45	0	65.9	59.9	44.4	38.8	38.8
7-8 AM	401	0.0	100	0.0	1500	401	0	100	0.46	0	65.6	59.5	43.9	38.7	38.7
8-9 AM	543	0.0	137	0.0	1500	543	0	137	0.48	0	65.4	59.1	43.3	38.6	38.6
9-10 AM	682	0.0	172	0.0	1500	682	0	172	0.49	0	65.1	58.7	42.8	38.4	38.4
10-11 AM	756	0.0	190	0.0	1500	756	0	190	0.50	0	65.0	58.6	42.5	38.3	38.3
11A-NOON	810	0.0	204	0.0	1500	810	0	204	0.50	0	64.9	58.4	42.4	38.3	38.3
NOON-1PM	800	0.0	202	0.0	1500	800	0	202	0.50	0	64.9	58.4	42.4	38.3	38.3
1-2 PM	796	0.0	201	0.0	1500	796	0	201	0.50	0	64.9	58.4	42.4	38.3	38.3
2-3 PM	773	0.0	195	0.0	1500	773	0	195	0.50	0	65.0	58.5	42.5	38.3	38.3
3-4 PM	728	0.0	183	0.0	1500	728	0	183	0.49	0	65.0	58.6	42.7	38.4	38.4
4-5 PM	675	0.0	170	0.0	1500	675	0	170	0.49	0	65.1	58.7	42.8	38.4	38.4
5-6 PM	629	0.0	158	0.0	1500	629	0	158	0.48	0	65.2	58.9	43.0	38.4	38.4
6-7 PM	522	0.0	132	0.0	1500	522	0	132	0.47	0	65.4	59.2	43.4	38.6	38.6
7-8 PM	425	0.0	107	0.0	1500	425	0	107	0.46	0	65.6	59.4	43.8	38.7	38.7
8-9 PM	364	0.0	92	0.0	1500	364	0	92	0.46	0	65.7	59.6	44.0	38.8	38.8
9-10 PM	320	0.0	81	0.0	1500	320	0	81	0.45	0	65.8	59.7	44.2	38.8	38.8
10-11 PM	253	0.0	64	0.0	1500	253	0	64	0.45	0	65.9	59.9	44.5	38.9	38.9
11PM-MID	168	0.0	42	0.0	1500	168	0	42	0.44	0	66.1	60.1	44.8	38.9	38.9

----- SITE BREAKDOWN DELAYS -----	
BREAKDOWN DURATION (MINS)	0
RANGE OF QUEUE DELAY - MIN	0.0
(VEH-H) MAX	0.0
RANGE OF DIVN DELAY - MIN	0.0
(VEH-H) MAX	0.0
AV BREAKDOWNS PER DAY	0.00
AV QUEUE DELAY/DAY (VEH-H)	0.0
AV DIVN DELAY/DAY (VEH-H)	0.0
AV TOTAL DELAY/DAY (VEH-H)	0.0

----- SITE ACCIDENT DELAYS -----	
ACCIDENT DURATION (MINS)	0
RANGE OF QUEUE DELAY - MIN	0.0
(VEH-H) MAX	0.0
RANGE OF DIVN DELAY - MIN	0.0
(VEH-H) MAX	0.0
AV ACCIDENTS PER DAY	0.00
AV QUEUE DELAY/DAY (VEH-H)	0.0
AV DIVN DELAY/DAY (VEH-H)	0.0
AV TOTAL DELAY/DAY (VEH-H)	0.0

AVERAGE ACCIDENT NUMBERS (PIA/DAY)	
MAIN ROUTE WITHOUT WORKS	0.0083
MAIN ROUTE WITH WORKS	0.0076
DIVERSION	0.0261

PIA: Personal Injury Accidents

IMPACTS ON ROAD USERS	
ROAD USER COSTS PER DAY (DOLLARS)	\$1,275
CONGESTED HOURS PER DAY*	0

*Delays Exceeding 15 Minutes

IH 43: BOWERS RD TO STH 11 (WALWORTH COUNTY)
CONTINUOUS (24 HOUR) CLOSURE
DIVERSION ROUTE: STH 11 - BOWERS RD

AUGUST
 Analyzed for 2009
 Construction Season

GRAPHICAL REPRESENTATION OF TRAFFIC MODEL INPUT AND OUTPUT
SATURDAY NORTHBOUND DIRECTION

