

IH 43: BOWERS RD TO STH 11 (WALWORTH COUNTY) CONTINUOUS (24 HOUR) CLOSURE DIVERSION ROUTE: STH 11 - BOWERS RD	AUGUST
	Analyzed for 2009 Construction Season

SUMMARY OF TRAFFIC MODEL OUTPUT

FRIDAY SOUTHBOUND DIRECTION

TIME OF DAY	FLOWS AND CAPACITY IN VEH/HR								AVERAGE SPEEDS IN MPH						
	MAIN ROUTE		ALTERNATE ROUTE		SITE CAPA CITY	FLOW MAIN ROUTE	FLOW DIVER -TING	TOTAL DIVN FLOW	AV.DEL PER VEH (MINS)	AVERAGE QUEUE (VEH)	MAIN ROUTE		ALTERNATE ROUTE		
	DEMAND FLOW	PCT HEAVY	NORMAL FLOW	PCT HEAVY							WITHOUT WORK ZN	WITH WORK ZN	SITE	WITHOUT WORK ZN	WITH WORK ZN
MID-1 AM	133	0.0	33	0.0	1500	133	0	33	0.44	0	66.1	60.2	45.0	39.0	39.0
1-2 AM	92	0.0	23	0.0	1500	92	0	23	0.43	0	66.2	60.4	45.1	39.0	39.0
2-3 AM	78	0.0	20	0.0	1500	78	0	20	0.43	0	66.3	60.4	45.2	39.1	39.1
3-4 AM	73	0.0	19	0.0	1500	73	0	19	0.43	0	66.3	60.4	45.2	39.1	39.1
4-5 AM	127	0.0	31	0.0	1500	127	0	31	0.43	0	66.1	60.2	45.0	39.0	39.0
5-6 AM	279	0.0	70	0.0	1500	279	0	70	0.45	0	65.9	59.9	44.3	38.8	38.8
6-7 AM	478	0.0	120	0.0	1500	478	0	120	0.47	0	65.5	59.3	43.6	38.6	38.6
7-8 AM	563	0.0	142	0.0	1500	563	0	142	0.48	0	65.3	59.1	43.3	38.5	38.5
8-9 AM	562	0.0	141	0.0	1500	562	0	141	0.48	0	65.3	59.1	43.3	38.5	38.5
9-10 AM	633	0.0	159	0.0	1500	633	0	159	0.48	0	65.2	58.9	43.0	38.4	38.4
10-11 AM	689	0.0	174	0.0	1500	689	0	174	0.49	0	65.1	58.7	42.8	38.4	38.4
11A-NOON	714	0.0	180	0.0	1500	714	0	180	0.49	0	65.1	58.7	42.7	38.4	38.4
NOON-1PM	751	0.0	189	0.0	1500	751	0	189	0.50	0	65.0	58.6	42.6	38.3	38.3
1-2 PM	838	0.0	211	0.0	1500	838	0	211	0.50	0	64.8	58.4	42.2	38.3	38.3
2-3 PM	882	0.0	222	0.0	1500	882	0	222	0.51	0	64.8	58.2	42.1	38.2	38.2
3-4 PM	1016	0.0	256	0.0	1500	1016	0	256	0.52	0	64.5	57.9	41.6	38.1	38.1
4-5 PM	1032	0.0	260	0.0	1500	1032	0	260	0.52	0	64.5	57.8	41.5	38.1	38.1
5-6 PM	956	0.0	241	0.0	1500	956	0	241	0.51	0	64.6	58.1	41.9	38.1	38.1
6-7 PM	785	0.0	198	0.0	1500	785	0	198	0.50	0	64.9	58.5	42.4	38.3	38.3
7-8 PM	562	0.0	141	0.0	1500	562	0	141	0.48	0	65.3	59.1	43.3	38.5	38.5
8-9 PM	455	0.0	115	0.0	1500	455	0	115	0.47	0	65.5	59.4	43.7	38.6	38.6
9-10 PM	430	0.0	109	0.0	1500	430	0	109	0.46	0	65.6	59.4	43.8	38.7	38.7
10-11 PM	373	0.0	94	0.0	1500	373	0	94	0.46	0	65.7	59.6	44.0	38.8	38.8
11PM-MID	267	0.0	67	0.0	1500	267	0	67	0.45	0	65.9	59.9	44.4	38.8	38.8

----- SITE BREAKDOWN DELAYS -----	
BREAKDOWN DURATION (MINS)	0
RANGE OF QUEUE DELAY - MIN	0.0
(VEH-H) MAX	0.0
RANGE OF DIVN DELAY - MIN	0.0
(VEH-H) MAX	0.0
AV BREAKDOWNS PER DAY	0.00
AV QUEUE DELAY/DAY (VEH-H)	0.0
AV DIVN DELAY/DAY (VEH-H)	0.0
AV TOTAL DELAY/DAY (VEH-H)	0.0

----- SITE ACCIDENT DELAYS -----	
ACCIDENT DURATION (MINS)	0
RANGE OF QUEUE DELAY - MIN	0.0
(VEH-H) MAX	0.0
RANGE OF DIVN DELAY - MIN	0.0
(VEH-H) MAX	0.0
AV ACCIDENTS PER DAY	0.00
AV QUEUE DELAY/DAY (VEH-H)	0.0
AV DIVN DELAY/DAY (VEH-H)	0.0
AV TOTAL DELAY/DAY (VEH-H)	0.0

AVERAGE ACCIDENT NUMBERS (PIA/DAY)	
MAIN ROUTE WITHOUT WORKS	0.0100
MAIN ROUTE WITH WORKS	0.0091
DIVERSION	0.0315

PIA: Personal Injury Accidents

IMPACTS ON ROAD USERS	
ROAD USER COSTS PER DAY (DOLLARS)	\$1,279
CONGESTED HOURS PER DAY*	0

*Delays Exceeding 15 Minutes

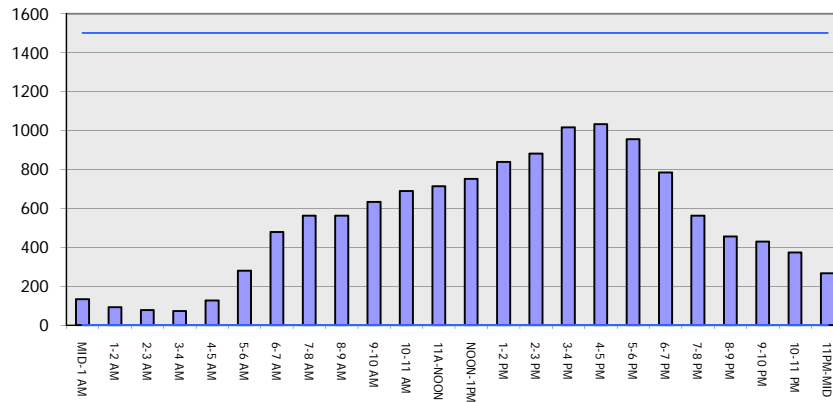
IH 43: BOWERS RD TO STH 11 (WALWORTH COUNTY)
CONTINUOUS (24 HOUR) CLOSURE
DIVERSION ROUTE: STH 11 - BOWERS RD

AUGUST
 Analyzed for 2009
 Construction Season

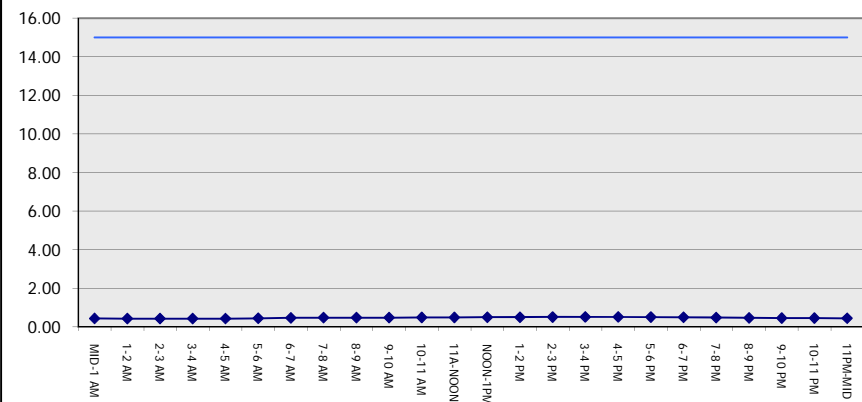
GRAPHICAL REPRESENTATION OF TRAFFIC MODEL INPUT AND OUTPUT

FRIDAY SOUTHBOUND DIRECTION

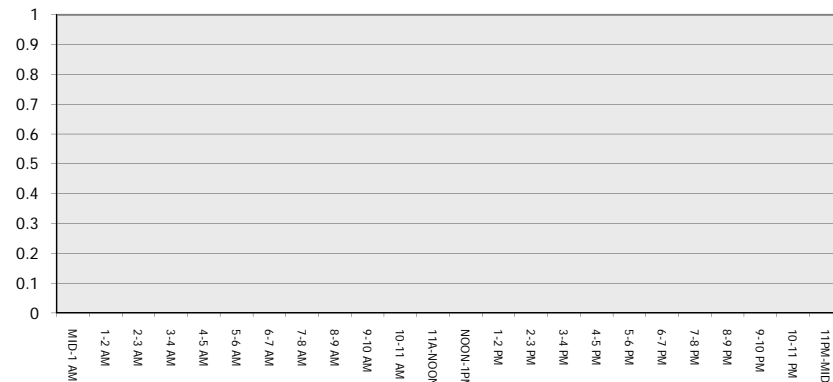
Main Route - Traffic Demand (Vehicles Per Hour)



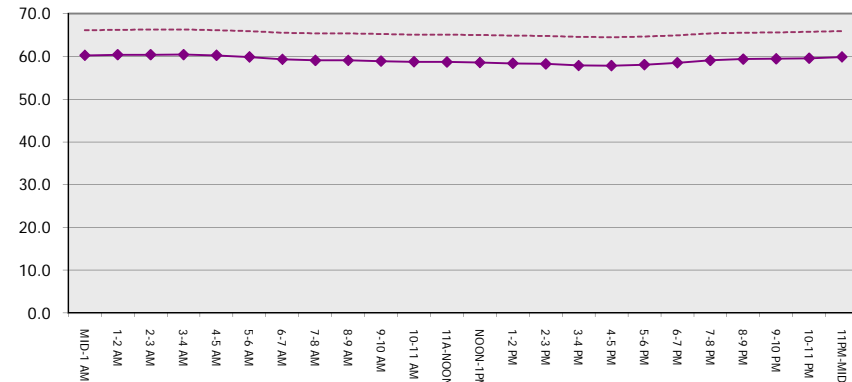
Main Route Average Delay Per Vehicle (Minutes)



Main Route - Average Queue Length (Vehicles)



Main Route - Average Speed (MPH)



IH 43: BOWERS RD TO STH 11 (WALWORTH COUNTY) CONTINUOUS (24 HOUR) CLOSURE DIVERSION ROUTE: STH 11 - BOWERS RD	AUGUST
	Analyzed for 2009 Construction Season

SUMMARY OF TRAFFIC MODEL OUTPUT

FRIDAY NORTHBOUND DIRECTION

TIME OF DAY	FLOWS AND CAPACITY IN VEH/HR								AVERAGE SPEEDS IN MPH						
	MAIN		DIVERSION		SITE CAPA CITY	FLOW MAIN ROUTE	FLOW DIVER -TING	TOTAL DIVN FLOW	AV.DEL PER VEH (MINS)	AVERAGE QUEUE (VEH)	MAIN ROUTE		SITE	ALTERNATE ROUTE	
	DEMAND FLOW	PCT HEAVY	NORMAL FLOW	PCT HEAVY							WITHOUT WORK ZN	WITH WORK ZN		WITHOUT WORK ZN	WITH WORK ZN
MID-1 AM	83	0.0	21	0.0	1500	83	0	21	0.43	0	66.3	60.4	45.1	39.1	39.1
1-2 AM	85	0.0	21	0.0	1500	85	0	21	0.43	0	66.2	60.4	45.1	39.1	39.1
2-3 AM	80	0.0	20	0.0	1500	80	0	20	0.43	0	66.3	60.4	45.1	39.1	39.1
3-4 AM	106	0.0	26	0.0	1500	106	0	26	0.43	0	66.2	60.3	45.1	39.0	39.0
4-5 AM	251	0.0	63	0.0	1500	251	0	63	0.45	0	65.9	59.9	44.5	38.9	38.9
5-6 AM	463	0.0	116	0.0	1500	463	0	116	0.47	0	65.5	59.4	43.7	38.6	38.6
6-7 AM	653	0.0	164	0.0	1500	653	0	164	0.49	0	65.1	58.8	42.9	38.4	38.4
7-8 AM	708	0.0	179	0.0	1500	708	0	179	0.49	0	65.1	58.7	42.7	38.4	38.4
8-9 AM	671	0.0	168	0.0	1500	671	0	168	0.49	0	65.1	58.8	42.8	38.4	38.4
9-10 AM	681	0.0	172	0.0	1500	681	0	172	0.49	0	65.1	58.7	42.8	38.4	38.4
10-11 AM	696	0.0	176	0.0	1500	696	0	176	0.49	0	65.1	58.7	42.8	38.4	38.4
11A-NOON	710	0.0	179	0.0	1500	710	0	179	0.49	0	65.1	58.7	42.7	38.4	38.4
NOON-1PM	718	0.0	181	0.0	1500	718	0	181	0.49	0	65.0	58.7	42.7	38.4	38.4
1-2 PM	763	0.0	193	0.0	1500	763	0	193	0.50	0	65.0	58.6	42.5	38.3	38.3
2-3 PM	862	0.0	218	0.0	1500	862	0	218	0.51	0	64.8	58.3	42.2	38.2	38.2
3-4 PM	901	0.0	227	0.0	1500	901	0	227	0.51	0	64.7	58.2	42.0	38.2	38.2
4-5 PM	913	0.0	230	0.0	1500	913	0	230	0.51	0	64.7	58.1	42.0	38.1	38.1
5-6 PM	866	0.0	219	0.0	1500	866	0	219	0.51	0	64.8	58.2	42.2	38.2	38.2
6-7 PM	704	0.0	177	0.0	1500	704	0	177	0.49	0	65.1	58.7	42.7	38.4	38.4
7-8 PM	523	0.0	132	0.0	1500	523	0	132	0.47	0	65.4	59.2	43.4	38.6	38.6
8-9 PM	395	0.0	99	0.0	1500	395	0	99	0.46	0	65.6	59.6	43.9	38.7	38.7
9-10 PM	320	0.0	81	0.0	1500	320	0	81	0.45	0	65.8	59.7	44.2	38.8	38.8
10-11 PM	267	0.0	67	0.0	1500	267	0	67	0.45	0	65.9	59.9	44.4	38.8	38.8
11PM-MID	163	0.0	41	0.0	1500	163	0	41	0.44	0	66.1	60.2	44.8	38.9	38.9

----- SITE BREAKDOWN DELAYS -----	
BREAKDOWN DURATION (MINS)	0
RANGE OF QUEUE DELAY - MIN	0.0
(VEH-H) MAX	0.0
RANGE OF DIVN DELAY - MIN	0.0
(VEH-H) MAX	0.0
AV BREAKDOWNS PER DAY	0.00
AV QUEUE DELAY/DAY (VEH-H)	0.0
AV DIVN DELAY/DAY (VEH-H)	0.0
AV TOTAL DELAY/DAY (VEH-H)	0.0

----- SITE ACCIDENT DELAYS -----	
ACCIDENT DURATION (MINS)	0
RANGE OF QUEUE DELAY - MIN	0.0
(VEH-H) MAX	0.0
RANGE OF DIVN DELAY - MIN	0.0
(VEH-H) MAX	0.0
AV ACCIDENTS PER DAY	0.00
AV QUEUE DELAY/DAY (VEH-H)	0.0
AV DIVN DELAY/DAY (VEH-H)	0.0
AV TOTAL DELAY/DAY (VEH-H)	0.0

AVERAGE ACCIDENT NUMBERS (PIA/DAY)	
MAIN ROUTE WITHOUT WORKS	0.0098
MAIN ROUTE WITH WORKS	0.0090
DIVERSION	0.0310

PIA: Personal Injury Accidents

IMPACTS ON ROAD USERS	
ROAD USER COSTS PER DAY (DOLLARS)	\$1,257
CONGESTED HOURS PER DAY*	0

*Delays Exceeding 15 Minutes

IH 43: BOWERS RD TO STH 11 (WALWORTH COUNTY)
CONTINUOUS (24 HOUR) CLOSURE
DIVERSION ROUTE: STH 11 - BOWERS RD

AUGUST
 Analyzed for 2009
 Construction Season

GRAPHICAL REPRESENTATION OF TRAFFIC MODEL INPUT AND OUTPUT
FRIDAY NORTHBOUND DIRECTION

