

IH 43: BOWERS RD TO STH 11 (WALWORTH COUNTY) CONTINUOUS (24 HOUR) CLOSURE DIVERSION ROUTE: STH 11 - BOWERS RD	MAY
	Analyzed for 2009 Construction Season

SUMMARY OF TRAFFIC MODEL OUTPUT

FRIDAY SOUTHBOUND DIRECTION

TIME OF DAY	FLOWS AND CAPACITY IN VEH/HR							AVERAGE SPEEDS IN MPH							
	MAIN ROUTE		ALTERNATE ROUTE		SITE CAPA CITY	FLOW MAIN ROUTE	FLOW DIVER -TING	TOTAL DIVN FLOW	AV.DEL PER VEH (MINS)	AVERAGE QUEUE (VEH)	MAIN ROUTE		ALTERNATE ROUTE		
	DEMAND FLOW	PCT HEAVY	NORMAL FLOW	PCT HEAVY							WITHOUT WORK ZN	WITH WORK ZN	SITE	WITHOUT WORK ZN	WITH WORK ZN
MID-1 AM	106	0.0	26	0.0	1500	106	0	26	0.43	0	66.2	60.3	45.1	39.0	39.0
1-2 AM	76	0.0	19	0.0	1500	76	0	19	0.43	0	66.3	60.4	45.2	39.1	39.1
2-3 AM	71	0.0	18	0.0	1500	71	0	18	0.43	0	66.3	60.4	45.2	39.1	39.1
3-4 AM	70	0.0	18	0.0	1500	70	0	18	0.43	0	66.3	60.4	45.2	39.1	39.1
4-5 AM	111	0.0	28	0.0	1500	111	0	28	0.43	0	66.2	60.3	45.0	39.0	39.0
5-6 AM	206	0.0	52	0.0	1500	206	0	52	0.44	0	66.0	60.1	44.6	38.9	38.9
6-7 AM	402	0.0	101	0.0	1500	402	0	101	0.46	0	65.6	59.5	43.9	38.7	38.7
7-8 AM	591	0.0	149	0.0	1500	591	0	149	0.48	0	65.3	59.0	43.2	38.5	38.5
8-9 AM	547	0.0	138	0.0	1500	547	0	138	0.48	0	65.4	59.1	43.3	38.6	38.6
9-10 AM	579	0.0	146	0.0	1500	579	0	146	0.48	0	65.3	59.1	43.2	38.5	38.5
10-11 AM	616	0.0	155	0.0	1500	616	0	155	0.48	0	65.3	58.9	43.1	38.5	38.5
11A-NOON	636	0.0	160	0.0	1500	636	0	160	0.48	0	65.2	58.9	43.0	38.4	38.4
NOON-1PM	693	0.0	175	0.0	1500	693	0	175	0.49	0	65.1	58.7	42.8	38.4	38.4
1-2 PM	764	0.0	193	0.0	1500	764	0	193	0.50	0	65.0	58.6	42.5	38.3	38.3
2-3 PM	807	0.0	203	0.0	1500	807	0	203	0.50	0	64.9	58.4	42.4	38.3	38.3
3-4 PM	944	0.0	237	0.0	1500	944	0	237	0.51	0	64.6	58.1	41.9	38.1	38.1
4-5 PM	1023	0.0	257	0.0	1500	1023	0	257	0.52	0	64.5	57.9	41.6	38.1	38.1
5-6 PM	956	0.0	241	0.0	1500	956	0	241	0.51	0	64.6	58.1	41.9	38.1	38.1
6-7 PM	732	0.0	184	0.0	1500	732	0	184	0.49	0	65.0	58.6	42.7	38.4	38.4
7-8 PM	522	0.0	132	0.0	1500	522	0	132	0.47	0	65.4	59.2	43.4	38.6	38.6
8-9 PM	406	0.0	103	0.0	1500	406	0	103	0.46	0	65.6	59.5	43.8	38.7	38.7
9-10 PM	344	0.0	87	0.0	1500	344	0	87	0.46	0	65.8	59.7	44.1	38.8	38.8
10-11 PM	280	0.0	70	0.0	1500	280	0	70	0.45	0	65.9	59.9	44.3	38.8	38.8
11PM-MID	243	0.0	62	0.0	1500	243	0	62	0.45	0	66.0	59.9	44.5	38.9	38.9

----- SITE BREAKDOWN DELAYS -----	
BREAKDOWN DURATION (MINS)	0
RANGE OF QUEUE DELAY - MIN	0.0
(VEH-H) MAX	0.0
RANGE OF DIVN DELAY - MIN	0.0
(VEH-H) MAX	0.0
AV BREAKDOWNS PER DAY	0.00
AV QUEUE DELAY/DAY (VEH-H)	0.0
AV DIVN DELAY/DAY (VEH-H)	0.0
AV TOTAL DELAY/DAY (VEH-H)	0.0

----- SITE ACCIDENT DELAYS -----	
ACCIDENT DURATION (MINS)	0
RANGE OF QUEUE DELAY - MIN	0.0
(VEH-H) MAX	0.0
RANGE OF DIVN DELAY - MIN	0.0
(VEH-H) MAX	0.0
AV ACCIDENTS PER DAY	0.00
AV QUEUE DELAY/DAY (VEH-H)	0.0
AV DIVN DELAY/DAY (VEH-H)	0.0
AV TOTAL DELAY/DAY (VEH-H)	0.0

AVERAGE ACCIDENT NUMBERS (PIA/DAY)	
MAIN ROUTE WITHOUT WORKS	0.0091
MAIN ROUTE WITH WORKS	0.0084
DIVERSION	0.0289

PIA: Personal Injury Accidents

IMPACTS ON ROAD USERS	
ROAD USER COSTS PER DAY (DOLLARS)	\$1,164
CONGESTED HOURS PER DAY*	0

*Delays Exceeding 15 Minutes

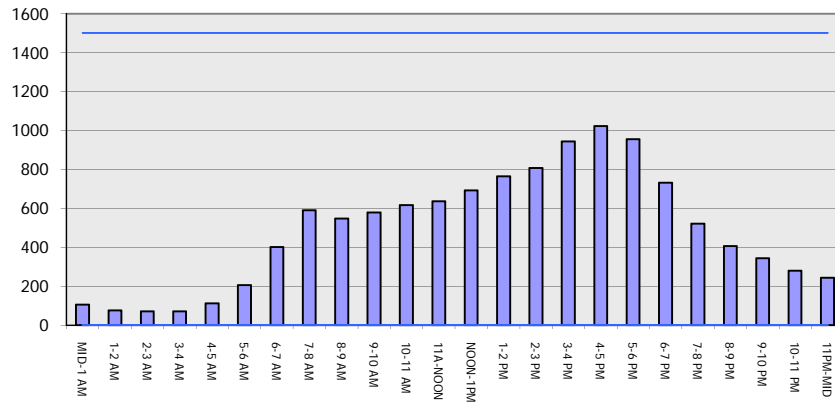
IH 43: BOWERS RD TO STH 11 (WALWORTH COUNTY)
CONTINUOUS (24 HOUR) CLOSURE
DIVERSION ROUTE: STH 11 - BOWERS RD

MAY
 Analyzed for 2009
 Construction Season

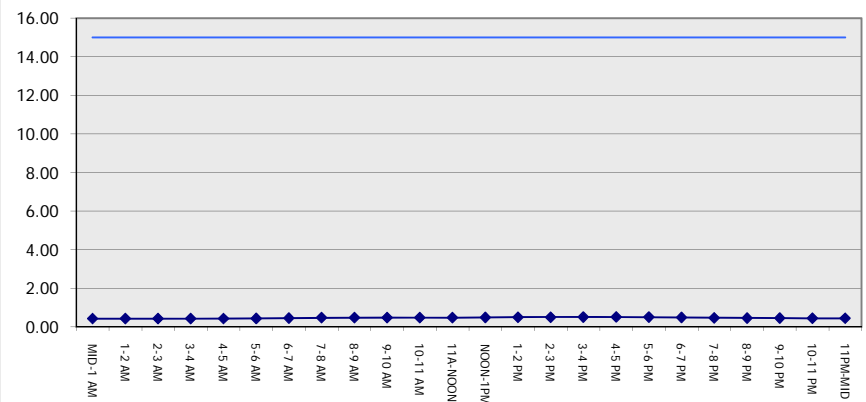
GRAPHICAL REPRESENTATION OF TRAFFIC MODEL INPUT AND OUTPUT

FRIDAY SOUTHBOUND DIRECTION

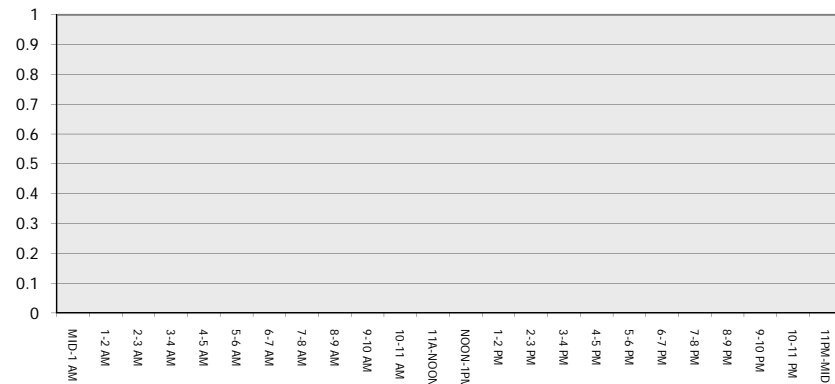
Main Route - Traffic Demand (Vehicles Per Hour)



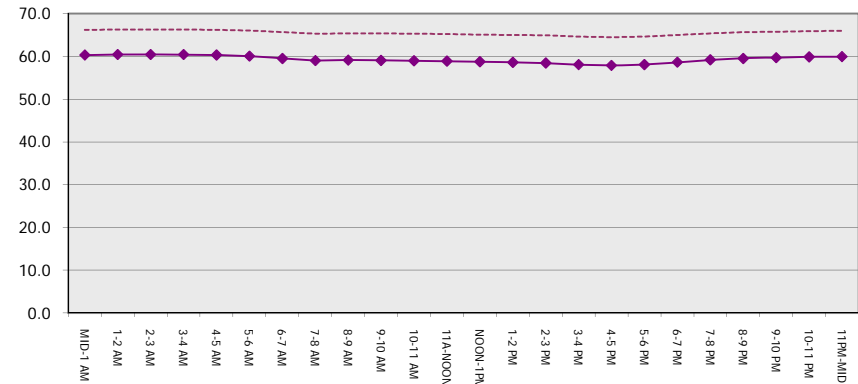
Main Route Average Delay Per Vehicle (Minutes)



Main Route - Average Queue Length (Vehicles)



Main Route - Average Speed (MPH)



IH 43: BOWERS RD TO STH 11 (WALWORTH COUNTY) CONTINUOUS (24 HOUR) CLOSURE DIVERSION ROUTE: STH 11 - BOWERS RD	MAY
	Analyzed for 2009 Construction Season

SUMMARY OF TRAFFIC MODEL OUTPUT

FRIDAY NORTHBOUND DIRECTION

TIME OF DAY	FLOWS AND CAPACITY IN VEH/HR								AVERAGE SPEEDS IN MPH						
	MAIN		DIVERSION		SITE CAPA CITY	FLOW MAIN ROUTE	FLOW DIVER -TING	TOTAL DIVN FLOW	AV.DEL PER VEH (MINS)	AVERAGE QUEUE (VEH)	MAIN ROUTE		SITE	ALTERNATE ROUTE	
	DEMAND FLOW	PCT HEAVY	NORMAL FLOW	PCT HEAVY							WITHOUT WORK ZN	WITH WORK ZN		WITHOUT WORK ZN	WITH WORK ZN
MID-1 AM	89	0.0	23	0.0	1500	89	0	23	0.43	0	66.2	60.4	45.1	39.0	39.0
1-2 AM	71	0.0	18	0.0	1500	71	0	18	0.43	0	66.3	60.4	45.2	39.1	39.1
2-3 AM	76	0.0	19	0.0	1500	76	0	19	0.43	0	66.3	60.4	45.2	39.1	39.1
3-4 AM	106	0.0	26	0.0	1500	106	0	26	0.43	0	66.2	60.3	45.1	39.0	39.0
4-5 AM	200	0.0	50	0.0	1500	200	0	50	0.44	0	66.0	60.1	44.7	38.9	38.9
5-6 AM	411	0.0	104	0.0	1500	411	0	104	0.46	0	65.6	59.5	43.8	38.7	38.7
6-7 AM	643	0.0	162	0.0	1500	643	0	162	0.48	0	65.2	58.9	43.0	38.4	38.4
7-8 AM	702	0.0	177	0.0	1500	702	0	177	0.49	0	65.1	58.7	42.7	38.4	38.4
8-9 AM	647	0.0	163	0.0	1500	647	0	163	0.49	0	65.2	58.9	43.0	38.4	38.4
9-10 AM	544	0.0	137	0.0	1500	544	0	137	0.48	0	65.4	59.1	43.3	38.6	38.6
10-11 AM	562	0.0	141	0.0	1500	562	0	141	0.48	0	65.3	59.1	43.3	38.5	38.5
11A-NOON	599	0.0	151	0.0	1500	599	0	151	0.48	0	65.3	59.0	43.2	38.5	38.5
NOON-1PM	625	0.0	157	0.0	1500	625	0	157	0.48	0	65.2	58.9	43.0	38.4	38.4
1-2 PM	674	0.0	169	0.0	1500	674	0	169	0.49	0	65.1	58.8	42.8	38.4	38.4
2-3 PM	742	0.0	186	0.0	1500	742	0	186	0.49	0	65.0	58.6	42.6	38.3	38.3
3-4 PM	838	0.0	211	0.0	1500	838	0	211	0.50	0	64.8	58.4	42.2	38.3	38.3
4-5 PM	832	0.0	209	0.0	1500	832	0	209	0.50	0	64.8	58.4	42.3	38.3	38.3
5-6 PM	799	0.0	201	0.0	1500	799	0	201	0.50	0	64.9	58.4	42.4	38.3	38.3
6-7 PM	631	0.0	159	0.0	1500	631	0	159	0.48	0	65.2	58.9	43.0	38.4	38.4
7-8 PM	468	0.0	118	0.0	1500	468	0	118	0.47	0	65.5	59.3	43.7	38.6	38.6
8-9 PM	374	0.0	94	0.0	1500	374	0	94	0.46	0	65.7	59.6	44.0	38.8	38.8
9-10 PM	287	0.0	72	0.0	1500	287	0	72	0.45	0	65.8	59.8	44.3	38.8	38.8
10-11 PM	233	0.0	59	0.0	1500	233	0	59	0.45	0	66.0	60.0	44.5	38.9	38.9
11PM-MID	155	0.0	39	0.0	1500	155	0	39	0.44	0	66.1	60.2	44.8	38.9	38.9

----- SITE BREAKDOWN DELAYS -----	
BREAKDOWN DURATION (MINS)	0
RANGE OF QUEUE DELAY - MIN	0.0
(VEH-H) MAX	0.0
RANGE OF DIVN DELAY - MIN	0.0
(VEH-H) MAX	0.0
AV BREAKDOWNS PER DAY	0.00
AV QUEUE DELAY/DAY (VEH-H)	0.0
AV DIVN DELAY/DAY (VEH-H)	0.0
AV TOTAL DELAY/DAY (VEH-H)	0.0

----- SITE ACCIDENT DELAYS -----	
ACCIDENT DURATION (MINS)	0
RANGE OF QUEUE DELAY - MIN	0.0
(VEH-H) MAX	0.0
RANGE OF DIVN DELAY - MIN	0.0
(VEH-H) MAX	0.0
AV ACCIDENTS PER DAY	0.00
AV QUEUE DELAY/DAY (VEH-H)	0.0
AV DIVN DELAY/DAY (VEH-H)	0.0
AV TOTAL DELAY/DAY (VEH-H)	0.0

AVERAGE ACCIDENT NUMBERS (PIA/DAY)	
MAIN ROUTE WITHOUT WORKS	0.0088
MAIN ROUTE WITH WORKS	0.0081
DIVERSION	0.0278

PIA: Personal Injury Accidents

IMPACTS ON ROAD USERS	
ROAD USER COSTS PER DAY (DOLLARS)	\$1,110
CONGESTED HOURS PER DAY*	0

*Delays Exceeding 15 Minutes

**IH 43: BOWERS RD TO STH 11 (WALWORTH COUNTY)
 CONTINUOUS (24 HOUR) CLOSURE
 DIVERSION ROUTE: STH 11 - BOWERS RD**

MAY
 Analyzed for 2009
 Construction Season

GRAPHICAL REPRESENTATION OF TRAFFIC MODEL INPUT AND OUTPUT
FRIDAY NORTHBOUND DIRECTION

