

<b>IH 43: STH 57/167 TO STH 100 (MILWAUKEE AND OZAUKEE COUNTIES)                  CONTINUOUS (24 HOUR) CLOSURE                  NO DIVERSION ROUTE (MAX QUEUE METHOD)</b>	<b>OCTOBER</b>
	Analyzed for 2009 Construction Season

**SUMMARY OF TRAFFIC MODEL OUTPUT**

SATURDAY SOUTHBOUND DIRECTION

TIME OF DAY	FLOWS AND CAPACITY IN VEH/HR						AVERAGE SPEEDS IN MPH			
	MAIN ROUTE		SITE CAPA CITY	FLOW		AV.DEL PER VEH (MINS)	AVERAGE QUEUE (VEH)	MAIN ROUTE		SITE
	DEMAND FLOW	PCT HEAVY		MAIN ROUTE	'DIVER TED'			WITHOUT WORK ZONE	WITH WORK ZONE	
MID-1 AM	353	0.0	1500	353	0	0.46	0	65.7	56.6	44.1
1-2 AM	155	0.0	1500	155	0	0.44	0	66.1	57.2	44.8
2-3 AM	114	0.0	1500	114	0	0.43	0	66.2	57.3	45.0
3-4 AM	111	0.0	1500	111	0	0.43	0	66.2	57.3	45.0
4-5 AM	201	0.0	1500	201	0	0.44	0	66.0	57.1	44.6
5-6 AM	385	0.0	1500	385	0	0.46	0	65.6	56.5	44.0
6-7 AM	628	0.0	1500	628	0	0.48	0	65.2	55.8	43.0
7-8 AM	1152	0.0	1499	1152	0	0.63	0	64.2	52.8	38.8
8-9 AM	1644	0.0	1499	1644	0	2.49	48	63.3	34.3	30.8
9-10 AM	1907	0.0	1500	1751	156	11.96+	312	62.8	12.7	30.8
10-11 AM	2042	0.0	1499	1501	542	16.09+	407	62.6	10.4	30.8
11AM-NOON	2222	0.0	1500	1501	721	16.08+	407	62.2	10.4	30.8
NOON-1PM	2403	0.0	1500	1501	902	16.07+	408	61.9	10.4	30.8
1-2 PM	2311	0.0	1500	1501	811	16.07+	408	62.1	10.4	30.8
2-3 PM	2179	0.0	1500	1501	679	16.08+	407	62.3	10.4	30.8
3-4 PM	2321	0.0	1500	1500	821	16.07+	408	62.0	10.4	30.8
4-5 PM	2280	0.0	1500	1500	780	16.08+	408	62.2	10.4	30.8
5-6 PM	2293	0.0	1500	1500	792	16.08+	408	62.1	10.4	30.8
6-7 PM	2070	0.0	1500	1500	570	16.09+	407	62.5	10.4	30.8
7-8 PM	1586	0.0	1500	1490	96	15.89+	401	63.4	10.4	30.8
8-9 PM	1216	0.0	1499	1216	0	10.02	262	64.1	14.5	32.0
9-10 PM	1093	0.0	1500	1093	0	0.93	15	64.3	48.7	40.3
10-11 PM	916	0.0	1500	916	0	0.51	0	64.7	54.9	42.0
11PM-MID	681	0.0	1500	681	0	0.49	0	65.1	55.6	42.8

+ INDICATES QUEUEING EXCEEDS USER-SPECIFIED MAXIMUM LIMIT

*----- SITE BREAKDOWN DELAYS -----*	
BREAKDOWN DURATION (MINS)	0
RANGE OF QUEUE DELAY - MIN (VEH-H) MAX	0.0
AV BREAKDOWNS PER DAY	0.00
AV QUEUE DELAY/DAY (VEH-H)	0.0
AV TOTAL DELAY/DAY (VEH-H)	0.0

*----- SITE ACCIDENT DELAYS -----*	
BREAKDOWN DURATION (MINS)	0
RANGE OF QUEUE DELAY - MIN (VEH-H) MAX	0
AV BREAKDOWNS PER DAY	0
AV QUEUE DELAY/DAY (VEH-H)	0
AV TOTAL DELAY/DAY (VEH-H)	0

AVERAGE ACCIDENT NUMBERS (PIA/DAY)	
MAIN ROUTE WITHOUT WORKS	0.0159
MAIN ROUTE WITH WORKS	0.0109
'DIVERSION'	0.0078
PIA: Personal Injury Accidents	
IMPACTS ON ROAD USERS	
ROAD USER COSTS PER DAY	\$109,161
CONGESTED HOURS PER DAY*	11

\*Delays Exceeding User-Specified Maximum

**IH 43: STH 57/167 TO STH 100 (MILWAUKEE AND OZAUKEE COUNTIES)  
 CONTINUOUS (24 HOUR) CLOSURE  
 NO DIVERSION ROUTE (MAX QUEUE METHOD)**

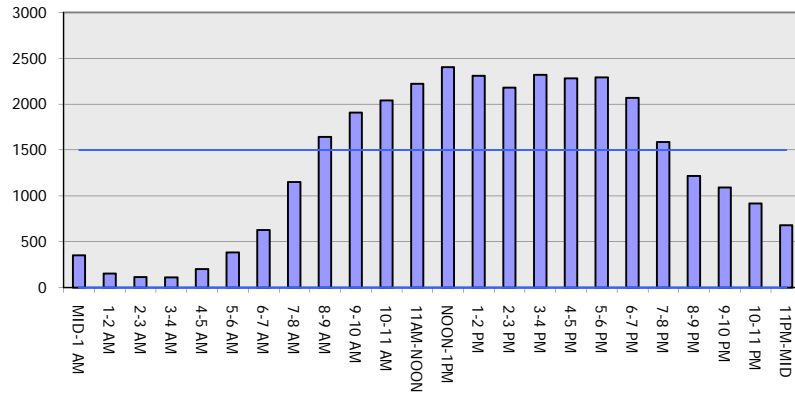
**OCTOBER**

Analyzed for 2009  
 Construction Season

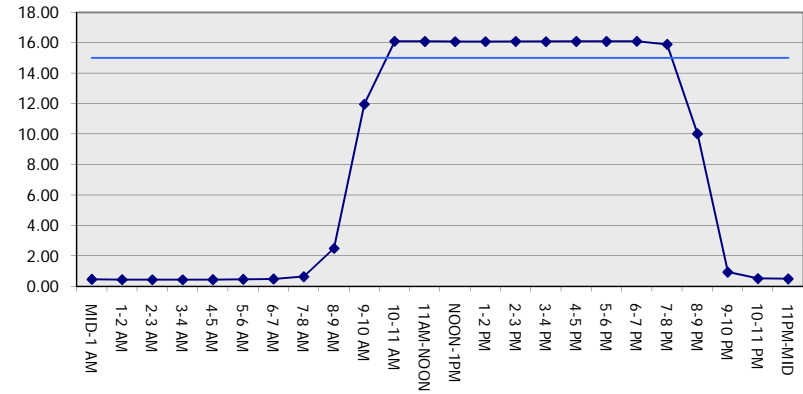
**GRAPHICAL REPRESENTATION OF TRAFFIC MODEL INPUT AND OUTPUT**

**SATURDAY SOUTHBOUND DIRECTION**

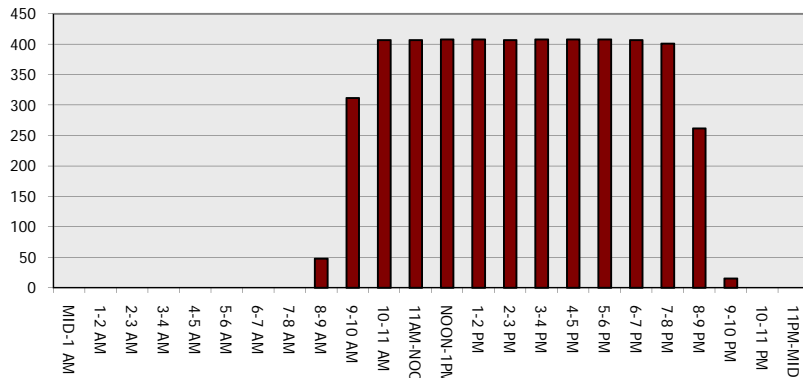
**Main Route - Traffic Demand (Vehicles Per Hour)**



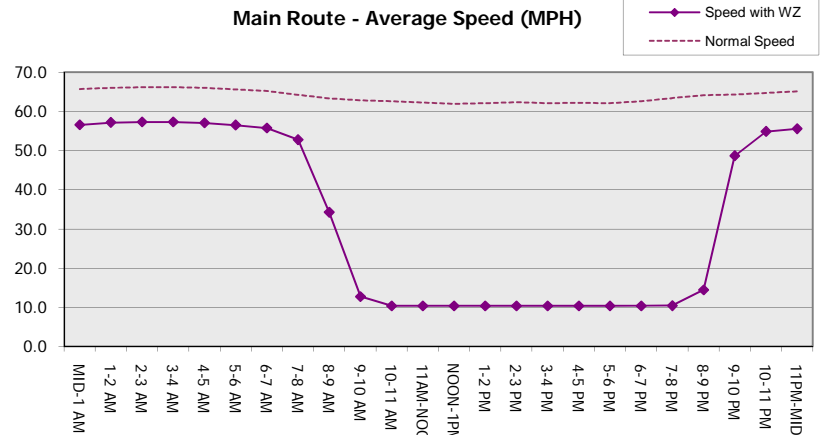
**Main Route Average Delay Per Vehicle (Minutes)**



**Main Route - Average Queue Length (Vehicles)**



**Main Route - Average Speed (MPH)**



<b>IH 43: STH 57/167 TO STH 100 (MILWAUKEE AND OZAUKEE COUNTIES)</b> <b>CONTINUOUS (24 HOUR) CLOSURE</b> <b>NO DIVERSION ROUTE (MAX QUEUE METHOD)</b>	<b>OCTOBER</b>
	Analyzed for 2009 Construction Season

**SUMMARY OF TRAFFIC MODEL OUTPUT**

**SATURDAY NORTHBOUND DIRECTION**

TIME OF DAY	FLOWS AND CAPACITY IN VEH/HR							AVERAGE SPEEDS IN MPH			
	MAIN ROUTE		SITE CAPA CITY	FLOW		AV.DEL PER VEH (MINS)	AVERAGE QUEUE (VEH)	MAIN ROUTE		SITE	
	DEMAND FLOW	PCT HEAVY		MAIN ROUTE	'DIVER TED'			WITHOUT WORK ZONE	WITH WORK ZONE		
MID-1 AM	504	0.0	1500	504	0	0.47	0	65.5	56.1	43.5	
1-2 AM	301	0.0	1500	301	0	0.45	0	65.8	56.8	44.3	
2-3 AM	258	0.0	1500	258	0	0.45	0	65.9	56.9	44.5	
3-4 AM	194	0.0	1500	194	0	0.44	0	66.0	57.1	44.7	
4-5 AM	245	0.0	1500	245	0	0.45	0	66.0	56.9	44.5	
5-6 AM	371	0.0	1500	371	0	0.46	0	65.7	56.5	44.0	
6-7 AM	646	0.0	1500	646	0	0.49	0	65.2	55.7	43.0	
7-8 AM	1210	0.0	1499	1210	0	0.67	0	64.1	52.2	37.9	
8-9 AM	1699	0.0	1499	1699	0	3.18	72	63.2	30.4	30.8	
9-10 AM	2058	0.0	1500	1730	328	14.06+	360	62.5	11.3	30.8	
10-11 AM	2478	0.0	1499	1498	980	16.03+	408	61.1	10.4	30.8	
11AM-NOON	2588	0.0	1499	1496	1092	15.98+	408	60.0	10.3	30.8	
NOON-1PM	2703	0.0	1499	1494	1209	15.93+	409	58.8	10.3	30.8	
1-2 PM	2626	0.0	1499	1498	1128	15.96+	408	59.6	10.3	30.8	
2-3 PM	2551	0.0	1500	1500	1051	15.99+	408	60.4	10.4	30.8	
3-4 PM	2554	0.0	1500	1500	1054	15.99+	408	60.4	10.4	30.8	
4-5 PM	2352	0.0	1500	1500	853	16.07+	408	62.0	10.4	30.8	
5-6 PM	2181	0.0	1500	1500	682	16.08+	407	62.3	10.4	30.8	
6-7 PM	1875	0.0	1500	1500	375	16.10+	407	62.9	10.4	30.8	
7-8 PM	1422	0.0	1499	1412	10	15.22+	383	63.7	10.7	30.8	
8-9 PM	1301	0.0	1499	1301	0	9.31	232	64.0	15.2	30.9	
9-10 PM	1197	0.0	1500	1197	0	1.37	27	64.1	43.5	37.2	
10-11 PM	1208	0.0	1500	1208	0	0.65	0	64.1	52.4	38.2	
11PM-MID	852	0.0	1500	852	0	0.50	0	64.8	55.1	42.2	

+ INDICATES QUEUEING EXCEEDS USER-SPECIFIED MAXIMUM LIMIT

*----- SITE BREAKDOWN DELAYS -----*	
BREAKDOWN DURATION (MINS)	0
RANGE OF QUEUE DELAY - MIN (VEH-H) MAX	0.0
AV BREAKDOWNS PER DAY	0.00
AV QUEUE DELAY/DAY (VEH-H)	0.0
AV TOTAL DELAY/DAY (VEH-H)	0.0

*----- SITE ACCIDENT DELAYS -----*	
BREAKDOWN DURATION (MINS)	0
RANGE OF QUEUE DELAY - MIN (VEH-H) MAX	0
AV BREAKDOWNS PER DAY	0
AV QUEUE DELAY/DAY (VEH-H)	0
AV TOTAL DELAY/DAY (VEH-H)	0

AVERAGE ACCIDENT NUMBERS (PIA/DAY)	
MAIN ROUTE WITHOUT WORKS	0.0175
MAIN ROUTE WITH WORKS	0.0114
'DIVERSION'	0.0100

PIA: Personal Injury Accidents

ECONOMIC IMPACT ON ROAD USERS	
ROAD USER COSTS PER DAY	\$118,206
CONGESTED HOURS PER DAY*	11

\*Delays Exceeding User-Specified Maximum

**IH 43: STH 57/167 TO STH 100 (MILWAUKEE AND OZAUKEE COUNTIES)  
 CONTINUOUS (24 HOUR) CLOSURE  
 NO DIVERSION ROUTE (MAX QUEUE METHOD)**

**OCTOBER**

Analyzed for 2009  
 Construction Season

**GRAPHICAL REPRESENTATION OF TRAFFIC MODEL INPUT AND OUTPUT**  
**SATURDAY NORTHBOUND DIRECTION**

