

<b>IH 43: STH 57/167 TO STH 100 (MILWAUKEE AND OZAUKEE COUNTIES)</b> <b>CONTINUOUS (24 HOUR) CLOSURE</b> <b>NO DIVERSION ROUTE (MAX QUEUE METHOD)</b>	<b>OCTOBER</b>
	Analyzed for 2009 Construction Season

**SUMMARY OF TRAFFIC MODEL OUTPUT**

FRIDAY                  SOUTHBOUND DIRECTION

TIME OF DAY	FLOWS AND CAPACITY IN VEH/HR							AVERAGE SPEEDS IN MPH			
	MAIN ROUTE		SITE CAPA CITY	FLOW		AV.DEL PER VEH (MINS)	AVERAGE QUEUE (VEH)	MAIN ROUTE		SITE	
	DEMAND FLOW	PCT HEAVY		MAIN ROUTE	'DIVER TED'			WITHOUT WORK ZONE	WITH WORK ZONE		
MID-1 AM	223	0.0	1500	223	0	0.44	0	66.0	57.0	44.6	
1-2 AM	137	0.0	1500	137	0	0.44	0	66.1	57.3	45.0	
2-3 AM	121	0.0	1500	121	0	0.43	0	66.1	57.3	45.0	
3-4 AM	145	0.0	1500	145	0	0.44	0	66.1	57.3	44.9	
4-5 AM	312	0.0	1500	312	0	0.45	0	65.8	56.7	44.2	
5-6 AM	1005	0.0	1499	1005	0	0.61	0	64.5	53.2	39.3	
6-7 AM	2539	0.0	1499	1862	677	10.57+	293	60.5	14.0	30.8	
7-8 AM	3685	0.0	1499	1500	2185	15.37+	412	48.7	10.3	30.8	
8-9 AM	2842	0.0	1500	1515	1327	15.89+	410	57.4	10.3	30.8	
9-10 AM	2176	0.0	1500	1502	675	16.08+	407	62.3	10.4	30.8	
10-11 AM	2060	0.0	1500	1501	558	16.09+	407	62.5	10.4	30.8	
11AM-NOON	2178	0.0	1500	1501	677	16.08+	407	62.3	10.4	30.8	
NOON-1PM	2274	0.0	1500	1501	773	16.08+	408	62.2	10.4	30.8	
1-2 PM	2260	0.0	1500	1501	758	16.08+	407	62.2	10.4	30.8	
2-3 PM	2447	0.0	1500	1502	945	16.05+	408	61.4	10.4	30.8	
3-4 PM	2768	0.0	1500	1509	1259	15.91+	409	58.1	10.3	30.8	
4-5 PM	2799	0.0	1500	1506	1293	15.90+	409	57.8	10.3	30.8	
5-6 PM	2993	0.0	1500	1504	1488	15.84+	411	55.8	10.3	30.8	
6-7 PM	2460	0.0	1500	1500	960	16.04+	408	61.3	10.4	30.8	
7-8 PM	1741	0.0	1500	1500	241	16.11+	407	63.2	10.4	30.8	
8-9 PM	1188	0.0	1499	1188	0	10.12+	270	64.1	14.4	32.5	
9-10 PM	1097	0.0	1500	1097	0	0.86	12	64.3	49.6	40.5	
10-11 PM	920	0.0	1500	920	0	0.51	0	64.6	54.9	42.0	
11PM-MID	661	0.0	1500	661	0	0.49	0	65.1	55.6	42.9	

+ INDICATES QUEUEING EXCEEDS USER-SPECIFIED MAXIMUM LIMIT

*----- SITE BREAKDOWN DELAYS -----*	
BREAKDOWN DURATION (MINS)	0
RANGE OF QUEUE DELAY - MIN (VEH-H) MAX	0.0
AV BREAKDOWNS PER DAY	0.00
AV QUEUE DELAY/DAY (VEH-H)	0.0
AV TOTAL DELAY/DAY (VEH-H)	0.0

*----- SITE ACCIDENT DELAYS -----*	
BREAKDOWN DURATION (MINS)	0
RANGE OF QUEUE DELAY - MIN (VEH-H) MAX	0
AV BREAKDOWNS PER DAY	0
AV QUEUE DELAY/DAY (VEH-H)	0
AV TOTAL DELAY/DAY (VEH-H)	0

AVERAGE ACCIDENT NUMBERS (PIA/DAY)	
MAIN ROUTE WITHOUT WORKS	0.0202
MAIN ROUTE WITH WORKS	0.0116
'DIVERSION'	0.0158
<small>PIA: Personal Injury Accidents</small>	
IMPACTS ON ROAD USERS	
ROAD USER COSTS PER DAY	\$126,654
CONGESTED HOURS PER DAY*	15

\*Delays Exceeding User-Specified Maximum

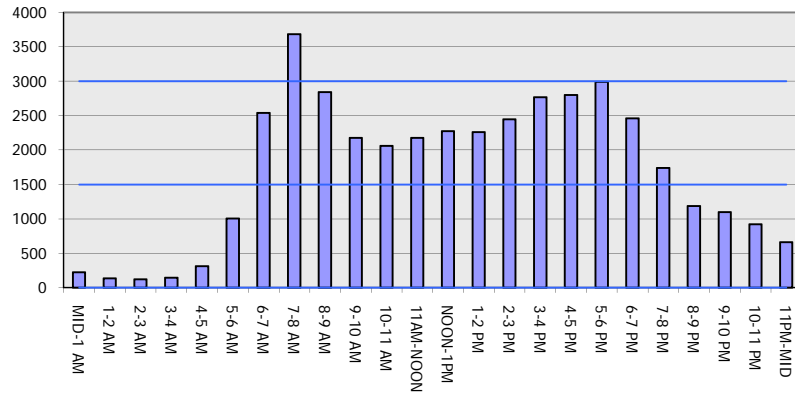
**IH 43: STH 57/167 TO STH 100 (MILWAUKEE AND OZAUKEE COUNTIES)  
 CONTINUOUS (24 HOUR) CLOSURE  
 NO DIVERSION ROUTE (MAX QUEUE METHOD)**

**OCTOBER**

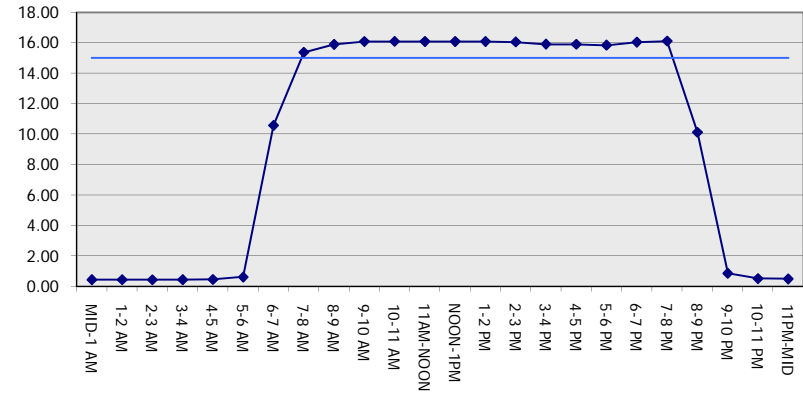
Analyzed for 2009  
 Construction Season

**GRAPHICAL REPRESENTATION OF TRAFFIC MODEL INPUT AND OUTPUT**  
**FRIDAY SOUTHBOUND DIRECTION**

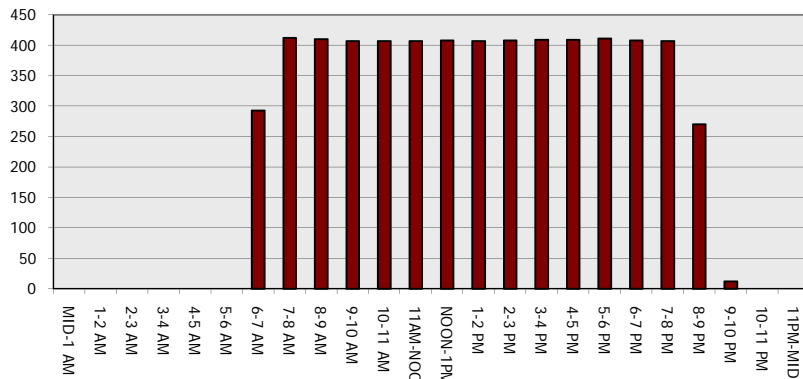
**Main Route - Traffic Demand (Vehicles Per Hour)**



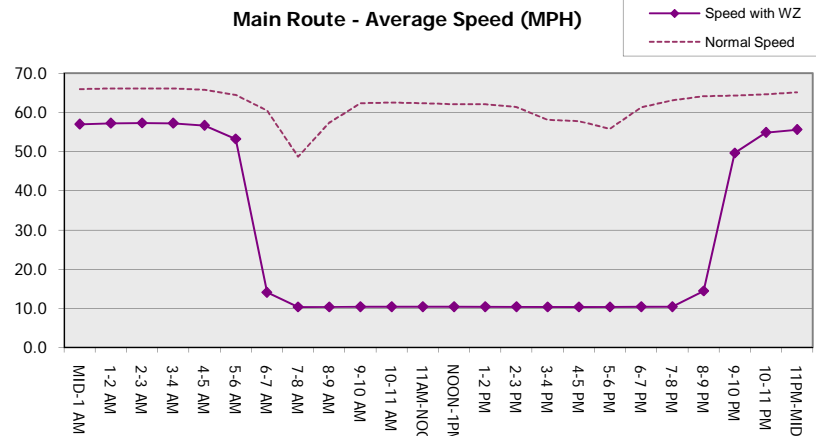
**Main Route Average Delay Per Vehicle (Minutes)**



**Main Route - Average Queue Length (Vehicles)**



**Main Route - Average Speed (MPH)**



<b>IH 43: STH 57/167 TO STH 100 (MILWAUKEE AND OZAUKEE COUNTIES)</b> <b>CONTINUOUS (24 HOUR) CLOSURE</b> <b>NO DIVERSION ROUTE (MAX QUEUE METHOD)</b>	<b>OCTOBER</b>
	Analyzed for 2009 Construction Season

**SUMMARY OF TRAFFIC MODEL OUTPUT**

FRIDAY NORTHBOUND DIRECTION

TIME OF DAY	FLOWS AND CAPACITY IN VEH/HR							AVERAGE SPEEDS IN MPH		
	MAIN ROUTE		SITE CAPA CITY	FLOW		AV.DEL PER VEH (MINS)	AVERAGE QUEUE (VEH)	MAIN ROUTE		SITE
	DEMAND FLOW	PCT HEAVY		MAIN ROUTE	'DIVER TED'			WITHOUT WORK ZONE	WITH WORK ZONE	
MID-1 AM	363	0.0	1500	363	0	0.46	0	65.7	56.6	44.0
1-2 AM	223	0.0	1500	223	0	0.44	0	66.0	57.0	44.6
2-3 AM	198	0.0	1500	198	0	0.44	0	66.0	57.1	44.7
3-4 AM	191	0.0	1500	191	0	0.44	0	66.0	57.1	44.7
4-5 AM	270	0.0	1500	270	0	0.45	0	65.9	56.8	44.4
5-6 AM	714	0.0	1500	714	0	0.49	0	65.1	55.5	42.7
6-7 AM	1677	0.0	1499	1677	0	2.23	51	63.3	36.0	31.4
7-8 AM	2578	0.0	1499	1764	814	15.15+	390	60.1	10.7	30.8
8-9 AM	2547	0.0	1499	1488	1058	16.04+	409	60.4	10.3	30.8
9-10 AM	2137	0.0	1499	1498	640	16.09+	407	62.4	10.4	30.8
10-11 AM	2350	0.0	1499	1496	854	16.08+	408	62.0	10.4	30.8
11AM-NOON	2632	0.0	1499	1490	1143	15.99+	409	59.6	10.3	30.8
NOON-1PM	2779	0.0	1499	1488	1292	15.92+	409	58.0	10.3	30.8
1-2 PM	2949	0.0	1499	1492	1457	15.86+	411	56.3	10.3	30.8
2-3 PM	3341	0.0	1499	1500	1841	15.65+	412	52.3	10.3	30.8
3-4 PM	3637	0.0	1500	1500	2137	15.42+	413	49.2	10.3	30.8
4-5 PM	3763	0.0	1500	1500	2263	15.31+	413	47.9	10.3	30.8
5-6 PM	3614	0.0	1500	1500	2114	15.43+	413	49.5	10.3	30.8
6-7 PM	3202	0.0	1500	1498	1704	15.73+	412	53.7	10.3	30.8
7-8 PM	2044	0.0	1500	1499	545	16.09+	407	62.6	10.4	30.8
8-9 PM	1737	0.0	1500	1499	237	16.11+	407	63.2	10.4	30.8
9-10 PM	1637	0.0	1500	1499	138	16.12+	407	63.3	10.4	30.8
10-11 PM	1321	0.0	1499	1321	0	13.95+	353	63.9	11.4	30.8
11PM-MID	784	0.0	1500	784	0	1.40	47	64.9	43.6	42.1

+ INDICATES QUEUEING EXCEEDS USER-SPECIFIED MAXIMUM LIMIT

BREAKDOWN DURATION (MINS)	0
RANGE OF QUEUE DELAY - MIN (VEH-H) MAX	0.0
AV BREAKDOWNS PER DAY	0.00
AV QUEUE DELAY/DAY (VEH-H)	0.0
AV TOTAL DELAY/DAY (VEH-H)	0.0

BREAKDOWN DURATION (MINS)	0
RANGE OF QUEUE DELAY - MIN (VEH-H) MAX	0
AV BREAKDOWNS PER DAY	0
AV QUEUE DELAY/DAY (VEH-H)	0
AV TOTAL DELAY/DAY (VEH-H)	0

MAIN ROUTE WITHOUT WORKS	0.0230
MAIN ROUTE WITH WORKS	0.0122
'DIVERSION'	0.0208

PIA: Personal Injury Accidents

ROAD USER COSTS PER DAY	\$150,647
CONGESTED HOURS PER DAY*	16

\*Delays Exceeding User-Specified Maximum

**IH 43: STH 57/167 TO STH 100 (MILWAUKEE AND OZAUKEE COUNTIES)  
 CONTINUOUS (24 HOUR) CLOSURE  
 NO DIVERSION ROUTE (MAX QUEUE METHOD)**

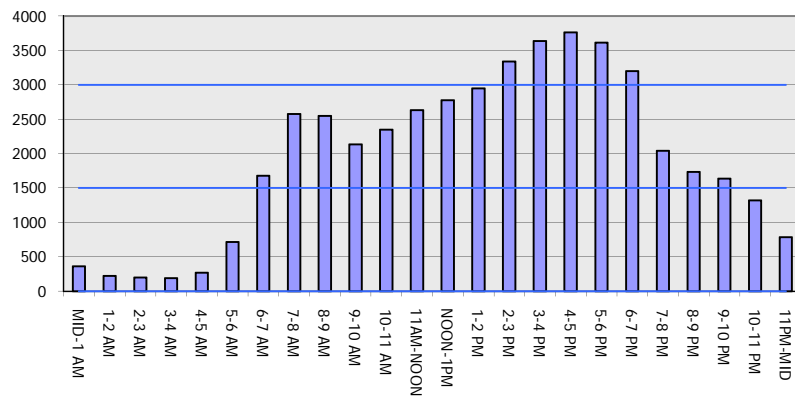
**OCTOBER**

Analyzed for 2009  
 Construction Season

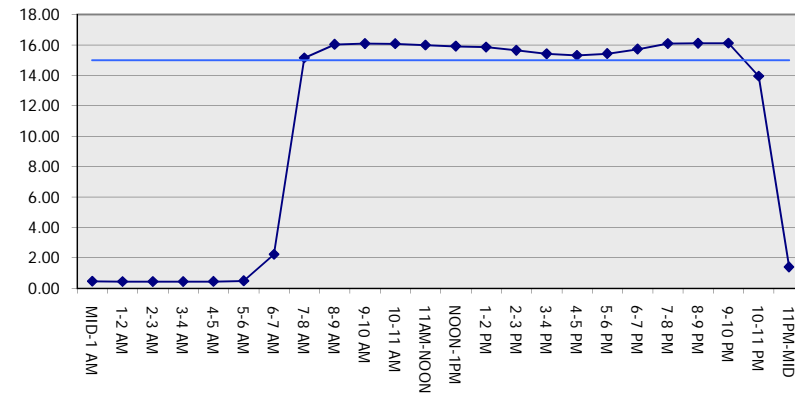
**GRAPHICAL REPRESENTATION OF TRAFFIC MODEL INPUT AND OUTPUT**

**FRIDAY NORTHBOUND DIRECTION**

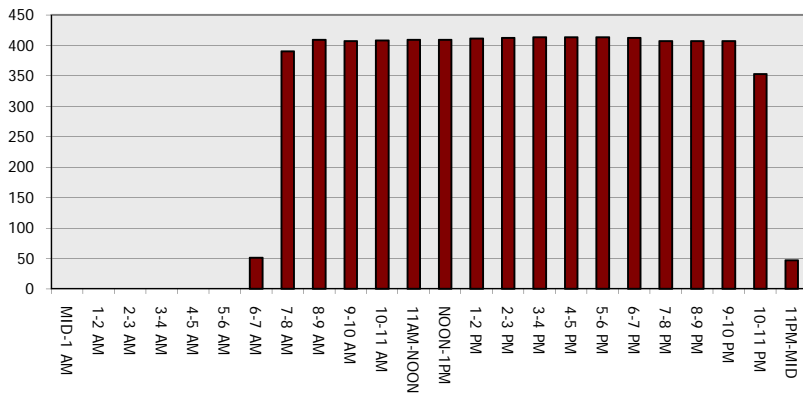
**Main Route - Traffic Demand (Vehicles Per Hour)**



**Main Route Average Delay Per Vehicle (Minutes)**



**Main Route - Average Queue Length (Vehicles)**



**Main Route - Average Speed (MPH)**

