

**IH 43: STH 28 TO STH 57 (OZAUKEE AND SHEBOYGAN COUNTIES)
CONTINUOUS (24 HOUR) CLOSURE
DIVERSION ROUTE: STH 84 - CTH LL**

MAY
Analyzed for 2009
Construction Season

SUMMARY OF TRAFFIC MODEL OUTPUT
SUNDAY SOUTHBOUND DIRECTION

TIME OF DAY	FLOWS AND CAPACITY IN VEH/HR							AVERAGE SPEEDS IN MPH							
	MAIN ROUTE		ALTERNATE ROUTE		SITE CAPA CITY	FLOW MAIN ROUTE	FLOW DIVER -TING	TOTAL DIVN FLOW	AV.DEL PER VEH (MINS)	AVERAGE QUEUE (VEH)	MAIN ROUTE		ALTERNATE ROUTE		
	DEMAND FLOW	PCT HEAVY	NORMAL FLOW	PCT HEAVY							WITHOUT WORK ZN	WITH WORK ZN	SITE	WITHOUT WORK ZN	WITH WORK ZN
MID-1 AM	93	0.0	6	0.0	1500	93	0	6	0.43	0	66.2	61.9	45.1	24.8	24.8
1-2 AM	65	0.0	4	0.0	1500	65	0	4	0.43	0	66.3	62.0	45.2	24.8	24.8
2-3 AM	51	0.0	3	0.0	1500	51	0	3	0.43	0	66.3	62.0	45.3	24.8	24.8
3-4 AM	63	0.0	4	0.0	1500	63	0	4	0.43	0	66.3	62.0	45.3	24.8	24.8
4-5 AM	87	0.0	6	0.0	1500	87	0	6	0.43	0	66.2	61.9	45.1	24.8	24.8
5-6 AM	120	0.0	8	0.0	1500	120	0	8	0.43	0	66.1	61.8	45.0	24.8	24.8
6-7 AM	184	0.0	12	0.0	1500	184	0	12	0.44	0	66.0	61.7	44.8	24.7	24.7
7-8 AM	323	0.0	22	0.0	1500	323	0	22	0.45	0	65.8	61.3	44.2	24.7	24.7
8-9 AM	518	0.0	35	0.0	1500	518	0	35	0.47	0	65.4	60.8	43.4	24.6	24.6
9-10 AM	745	0.0	50	0.0	1500	745	0	50	0.49	0	65.0	60.2	42.6	24.5	24.5
10-11 AM	1033	0.0	69	0.0	1500	1033	0	69	0.52	0	64.5	59.6	41.5	24.3	24.3
11A-NOON	1191	0.0	80	0.0	1500	1191	0	80	0.62	0	64.1	58.4	38.8	24.2	24.2
NOON-1PM	1143	0.0	77	0.0	1500	1143	0	77	0.56	0	64.3	59.0	40.4	24.2	24.2
1-2 PM	1196	0.0	80	0.0	1500	1196	0	80	0.63	0	64.1	58.4	38.6	24.2	24.2
2-3 PM	1258	0.0	84	0.0	1500	1258	0	84	0.71	0	64.0	57.6	36.7	24.2	24.2
3-4 PM	1266	0.0	85	0.0	1500	1266	0	85	0.72	0	64.0	57.5	36.5	24.2	24.2
4-5 PM	1314	0.0	89	0.0	1500	1314	0	89	0.78	0	64.0	56.9	35.1	24.2	24.2
5-6 PM	1162	0.0	78	0.0	1500	1162	0	78	0.59	0	64.2	58.8	39.7	24.2	24.2
6-7 PM	1003	0.0	67	0.0	1500	1003	0	67	0.52	0	64.5	59.6	41.7	24.3	24.3
7-8 PM	829	0.0	56	0.0	1500	829	0	56	0.50	0	64.8	60.1	42.3	24.4	24.4
8-9 PM	574	0.0	38	0.0	1500	574	0	38	0.48	0	65.3	60.7	43.2	24.5	24.5
9-10 PM	401	0.0	27	0.0	1500	401	0	27	0.46	0	65.6	61.1	43.9	24.7	24.7
10-11 PM	248	0.0	16	0.0	1500	248	0	16	0.45	0	66.0	61.5	44.5	24.7	24.7
11PM-MID	132	0.0	9	0.0	1500	132	0	9	0.44	0	66.1	61.8	45.0	24.8	24.8

----- SITE BREAKDOWN DELAYS -----

BREAKDOWN DURATION (MINS)	0
RANGE OF QUEUE DELAY - MIN (VEH-H) MAX	0.0
RANGE OF DIVN DELAY - MIN (VEH-H) MAX	0.0
AV BREAKDOWNS PER DAY	0.00
AV QUEUE DELAY/DAY (VEH-H)	0.0
AV DIVN DELAY/DAY (VEH-H)	0.0
AV TOTAL DELAY/DAY (VEH-H)	0.0

----- SITE ACCIDENT DELAYS -----

ACCIDENT DURATION (MINS)	0
RANGE OF QUEUE DELAY - MIN (VEH-H) MAX	0.0
RANGE OF DIVN DELAY - MIN (VEH-H) MAX	0.0
AV ACCIDENTS PER DAY	0.00
AV QUEUE DELAY/DAY (VEH-H)	0.0
AV DIVN DELAY/DAY (VEH-H)	0.0
AV TOTAL DELAY/DAY (VEH-H)	0.0

AVERAGE ACCIDENT NUMBERS (PIA/DAY)

MAIN ROUTE WITHOUT WORKS	0.0162
MAIN ROUTE WITH WORKS	0.0152
DIVERSION	0.0084

PIA: Personal Injury Accidents

IMPACTS ON ROAD USERS

ROAD USER COSTS PER DAY (DOLLARS)	\$2,286
CONGESTED HOURS PER DAY*	0

*Delays Exceeding 15 Minutes

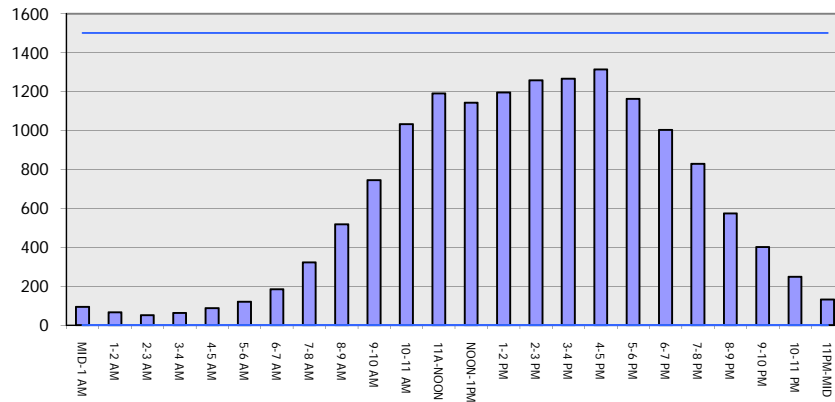
**IH 43: STH 28 TO STH 57 (OZAUKEE AND SHEBOYGAN COUNTIES)
 CONTINUOUS (24 HOUR) CLOSURE
 DIVERSION ROUTE: STH 84 - CTH LL**

MAY
 Analyzed for 2009
 Construction Season

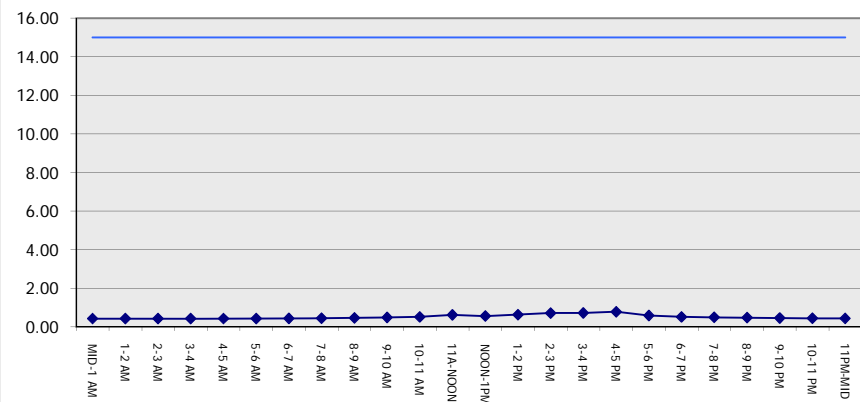
GRAPHICAL REPRESENTATION OF TRAFFIC MODEL INPUT AND OUTPUT

SUNDAY SOUTHBOUND DIRECTION

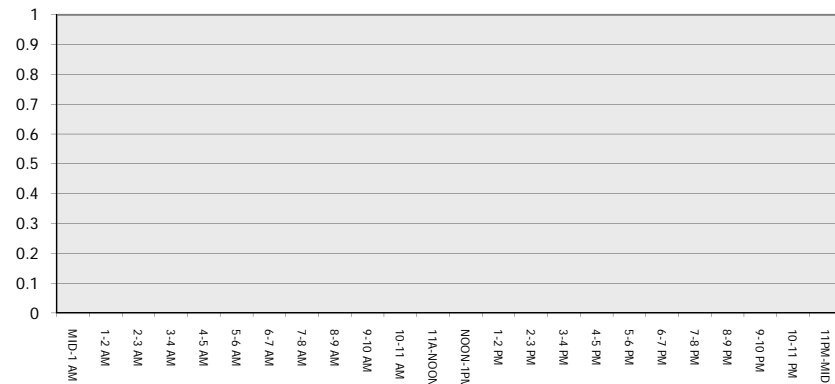
Main Route - Traffic Demand (Vehicles Per Hour)



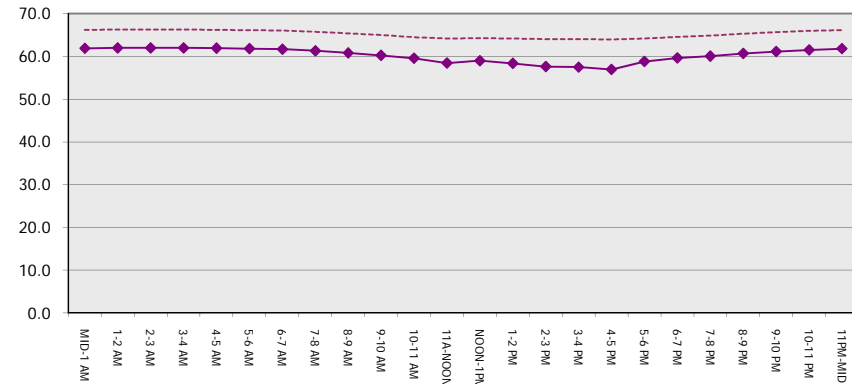
Main Route Average Delay Per Vehicle (Minutes)



Main Route - Average Queue Length (Vehicles)



Main Route - Average Speed (MPH)



IH 43: STH 28 TO STH 57 (OZAUKEE AND SHEBOYGAN COUNTIES) CONTINUOUS (24 HOUR) CLOSURE DIVERSION ROUTE: STH 84 - CTH LL	MAY
	Analyzed for 2009 Construction Season

SUMMARY OF TRAFFIC MODEL OUTPUT

SUNDAY NORTHBOUND DIRECTION

TIME OF DAY	FLOWS AND CAPACITY IN VEH/HR								AVERAGE SPEEDS IN MPH						
	MAIN		DIVERSION		SITE CAPA CITY	FLOW MAIN ROUTE	FLOW DIVER -TING	TOTAL DIVN FLOW	AV.DEL PER VEH (MINS)	AVERAGE QUEUE (VEH)	MAIN ROUTE		SITE	ALTERNATE ROUTE	
	DEMAND FLOW	PCT HEAVY	NORMAL FLOW	PCT HEAVY							WITHOUT WORK ZN	WITH WORK ZN		WITHOUT WORK ZN	WITH WORK ZN
MID-1 AM	115	0.0	8	0.0	1500	115	0	8	0.43	0	66.2	61.8	45.0	24.8	24.8
1-2 AM	78	0.0	5	0.0	1500	78	0	5	0.43	0	66.3	61.9	45.2	24.8	24.8
2-3 AM	51	0.0	3	0.0	1500	51	0	3	0.43	0	66.3	62.0	45.3	24.8	24.8
3-4 AM	46	0.0	3	0.0	1500	46	0	3	0.43	0	66.3	62.0	45.3	24.8	24.8
4-5 AM	60	0.0	4	0.0	1500	60	0	4	0.43	0	66.3	62.0	45.3	24.8	24.8
5-6 AM	93	0.0	6	0.0	1500	93	0	6	0.43	0	66.2	61.9	45.1	24.8	24.8
6-7 AM	157	0.0	10	0.0	1500	157	0	10	0.44	0	66.1	61.7	44.8	24.8	24.8
7-8 AM	267	0.0	17	0.0	1500	267	0	17	0.45	0	65.9	61.4	44.4	24.7	24.7
8-9 AM	398	0.0	27	0.0	1500	398	0	27	0.46	0	65.6	61.1	43.9	24.7	24.7
9-10 AM	596	0.0	40	0.0	1500	596	0	40	0.48	0	65.3	60.6	43.2	24.5	24.5
10-11 AM	784	0.0	52	0.0	1500	784	0	52	0.50	0	64.9	60.2	42.5	24.5	24.5
11A-NOON	845	0.0	57	0.0	1500	845	0	57	0.50	0	64.8	60.0	42.2	24.4	24.4
NOON-1PM	848	0.0	57	0.0	1500	848	0	57	0.50	0	64.8	60.0	42.2	24.4	24.4
1-2 PM	832	0.0	56	0.0	1500	832	0	56	0.50	0	64.8	60.1	42.3	24.4	24.4
2-3 PM	817	0.0	55	0.0	1500	817	0	55	0.50	0	64.8	60.1	42.4	24.4	24.4
3-4 PM	869	0.0	59	0.0	1500	869	0	59	0.51	0	64.8	59.9	42.2	24.4	24.4
4-5 PM	955	0.0	64	0.0	1500	955	0	64	0.51	0	64.6	59.7	41.9	24.3	24.3
5-6 PM	927	0.0	63	0.0	1500	927	0	63	0.51	0	64.6	59.8	41.9	24.3	24.3
6-7 PM	743	0.0	50	0.0	1500	743	0	50	0.49	0	65.0	60.2	42.6	24.5	24.5
7-8 PM	621	0.0	42	0.0	1500	621	0	42	0.48	0	65.2	60.5	43.0	24.5	24.5
8-9 PM	474	0.0	32	0.0	1500	474	0	32	0.47	0	65.5	60.9	43.6	24.6	24.6
9-10 PM	327	0.0	22	0.0	1500	327	0	22	0.45	0	65.8	61.3	44.2	24.7	24.7
10-11 PM	208	0.0	14	0.0	1500	208	0	14	0.44	0	66.0	61.6	44.6	24.7	24.7
11PM-MID	146	0.0	10	0.0	1500	146	0	10	0.44	0	66.1	61.7	44.9	24.8	24.8

----- SITE BREAKDOWN DELAYS -----	
BREAKDOWN DURATION (MINS)	0
RANGE OF QUEUE DELAY - MIN	0.0
(VEH-H) MAX	0.0
RANGE OF DIVN DELAY - MIN	0.0
(VEH-H) MAX	0.0
AV BREAKDOWNS PER DAY	0.00
AV QUEUE DELAY/DAY (VEH-H)	0.0
AV DIVN DELAY/DAY (VEH-H)	0.0
AV TOTAL DELAY/DAY (VEH-H)	0.0

----- SITE ACCIDENT DELAYS -----	
ACCIDENT DURATION (MINS)	0
RANGE OF QUEUE DELAY - MIN	0.0
(VEH-H) MAX	0.0
RANGE OF DIVN DELAY - MIN	0.0
(VEH-H) MAX	0.0
AV ACCIDENTS PER DAY	0.00
AV QUEUE DELAY/DAY (VEH-H)	0.0
AV DIVN DELAY/DAY (VEH-H)	0.0
AV TOTAL DELAY/DAY (VEH-H)	0.0

AVERAGE ACCIDENT NUMBERS (PIA/DAY)	
MAIN ROUTE WITHOUT WORKS	0.0122
MAIN ROUTE WITH WORKS	0.0114
DIVERSION	0.0063

PIA: Personal Injury Accidents

IMPACTS ON ROAD USERS	
ROAD USER COSTS PER DAY (DOLLARS)	\$1,431
CONGESTED HOURS PER DAY*	0

*Delays Exceeding 15 Minutes

**IH 43: STH 28 TO STH 57 (OZAUKEE AND SHEBOYGAN COUNTIES)
 CONTINUOUS (24 HOUR) CLOSURE
 DIVERSION ROUTE: STH 84 - CTH LL**

MAY
 Analyzed for 2009
 Construction Season

GRAPHICAL REPRESENTATION OF TRAFFIC MODEL INPUT AND OUTPUT
SUNDAY NORTHBOUND DIRECTION

