

IH 94: CTH ZZ/COLLEGE AVE TO CTH BB/RAWSON AVE (MILWAUKEE COUNTY) CONTINUOUS (24 HOUR) CLOSURE NO DIVERSION ROUTE (MAX QUEUE METHOD)	OCTOBER
	Analyzed for 2009 Construction Season

SUMMARY OF TRAFFIC MODEL OUTPUT

MON-THUR WESTBOUND DIRECTION

TIME OF DAY	FLOWS AND CAPACITY IN VEH/HR							AVERAGE SPEEDS IN MPH			
	MAIN ROUTE		SITE CAPA CITY	FLOW		AV.DEL PER VEH (MINS)	AVERAGE QUEUE (VEH)	MAIN ROUTE		SITE	
	DEMAND FLOW	PCT HEAVY		MAIN ROUTE	'DIVER TED'			WITHOUT WORK ZONE	WITH WORK ZONE		
MID-1 AM	678	0.0	3000	678	0	0.18	0	70.2	57.9	49.7	
1-2 AM	408	0.0	3000	408	0	0.18	0	70.2	57.9	49.7	
2-3 AM	392	0.0	3000	392	0	0.18	0	70.2	57.9	49.7	
3-4 AM	453	0.0	3000	453	0	0.18	0	70.2	57.9	49.7	
4-5 AM	760	0.0	3000	760	0	0.18	0	70.2	57.9	49.7	
5-6 AM	2063	0.0	2999	2063	0	0.20	0	69.5	56.6	48.3	
6-7 AM	4035	0.0	2999	4035	0	7.01+	441	64.6	11.7	36.9	
7-8 AM	4512	0.0	2999	2926	1586	17.82+	974	61.4	8.1	36.9	
8-9 AM	3747	0.0	3000	2962	785	16.88+	910	66.6	8.3	36.9	
9-10 AM	3120	0.0	2999	2967	153	16.71+	898	68.2	8.3	36.9	
10-11 AM	3015	0.0	2999	3008	7	16.70+	897	68.3	8.3	36.9	
11AM-NOON	3036	0.0	2999	3000	35	16.73+	899	68.2	8.3	36.9	
NOON-1PM	3140	0.0	3000	3001	139	16.75+	900	68.1	8.3	36.9	
1-2 PM	3259	0.0	3000	3001	258	16.77+	901	68.0	8.3	36.9	
2-3 PM	3636	0.0	2999	3003	633	16.83+	906	67.3	8.3	36.9	
3-4 PM	4072	0.0	2999	3008	1064	16.82+	911	64.3	8.3	36.9	
4-5 PM	3858	0.0	3000	2998	860	16.82+	908	65.8	8.3	36.9	
5-6 PM	3719	0.0	3000	2998	721	16.82+	907	66.8	8.3	36.9	
6-7 PM	3140	0.0	3000	2976	164	16.72+	898	68.1	8.3	36.9	
7-8 PM	2302	0.0	2999	2302	0	10.24+	573	69.2	9.8	39.9	
8-9 PM	1888	0.0	3000	1888	0	0.30	16	69.7	51.8	49.7	
9-10 PM	1852	0.0	3000	1852	0	0.18	0	69.7	57.8	49.7	
10-11 PM	1458	0.0	3000	1458	0	0.18	0	70.2	57.9	49.7	
11PM-MID	1029	0.0	3000	1029	0	0.18	0	70.2	57.9	49.7	

+ INDICATES QUEUEING EXCEEDS USER-SPECIFIED MAXIMUM LIMIT

----- SITE BREAKDOWN DELAYS -----	
BREAKDOWN DURATION (MINS)	0
RANGE OF QUEUE DELAY - MIN (VEH-H) MAX	0.0
AV BREAKDOWNS PER DAY	0.00
AV QUEUE DELAY/DAY (VEH-H)	0.0
AV TOTAL DELAY/DAY (VEH-H)	0.0

----- SITE ACCIDENT DELAYS -----	
BREAKDOWN DURATION (MINS)	0
RANGE OF QUEUE DELAY - MIN (VEH-H) MAX	0
AV BREAKDOWNS PER DAY	0
AV QUEUE DELAY/DAY (VEH-H)	0
AV TOTAL DELAY/DAY (VEH-H)	0

AVERAGE ACCIDENT NUMBERS (PIA/DAY)	
MAIN ROUTE WITHOUT WORKS	0.0095
MAIN ROUTE WITH WORKS	0.0027
'DIVERSION'	0.0024
PIA: Personal Injury Accidents	
IMPACTS ON ROAD USERS	
ROAD USER COSTS PER DAY	\$169,673
CONGESTED HOURS PER DAY*	14

*Delays Exceeding User-Specified Maximum

**IH 94: CTH ZZ/COLLEGE AVE TO CTH BB/RAWSON AVE (MILWAUKEE COUNTY)
CONTINUOUS (24 HOUR) CLOSURE
NO DIVERSION ROUTE (MAX QUEUE METHOD)**

OCTOBER

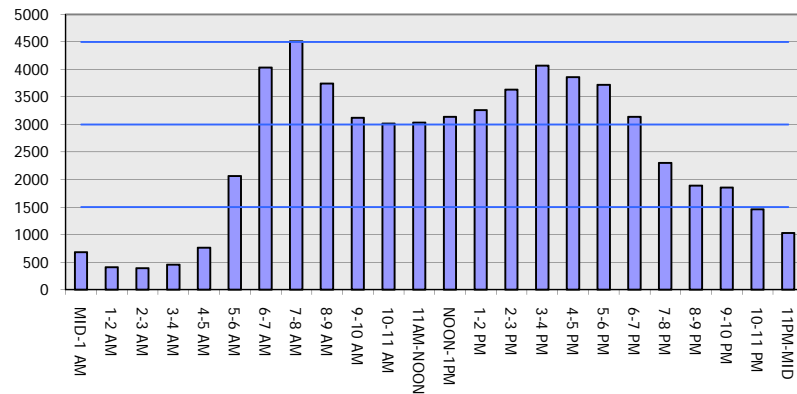
Analyzed for 2009
Construction Season

GRAPHICAL REPRESENTATION OF TRAFFIC MODEL INPUT AND OUTPUT

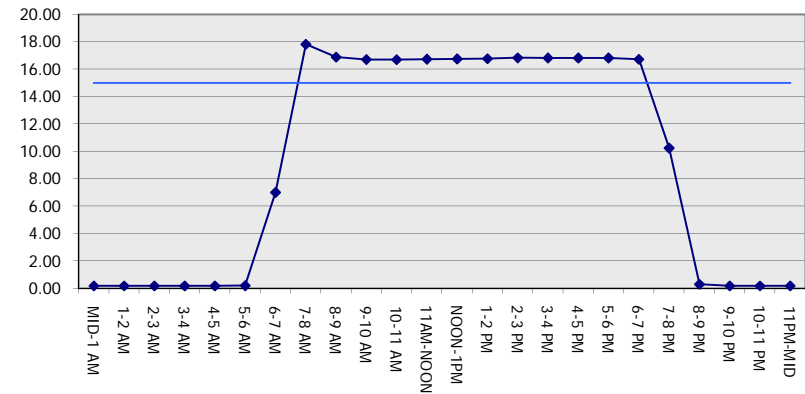
MON-THUR

WESTBOUND DIRECTION

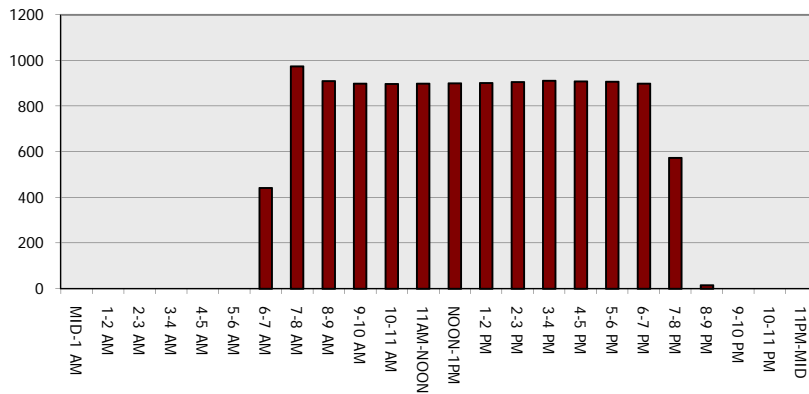
Main Route - Traffic Demand (Vehicles Per Hour)



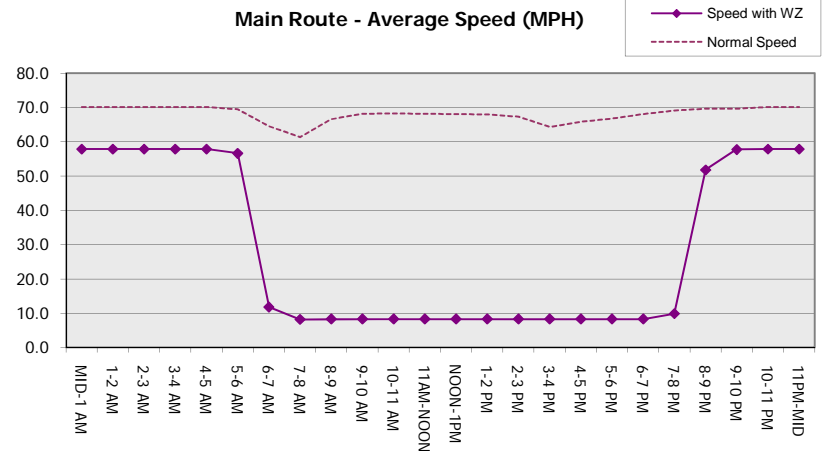
Main Route Average Delay Per Vehicle (Minutes)



Main Route - Average Queue Length (Vehicles)



Main Route - Average Speed (MPH)



IH 94: CTH ZZ/COLLEGE AVE TO CTH BB/RAWSON AVE (MILWAUKEE COUNTY) CONTINUOUS (24 HOUR) CLOSURE NO DIVERSION ROUTE (MAX QUEUE METHOD)	OCTOBER
	Analyzed for 2009 Construction Season

SUMMARY OF TRAFFIC MODEL OUTPUT

MON-THUR EASTBOUND DIRECTION

TIME OF DAY	FLOWS AND CAPACITY IN VEH/HR							AVERAGE SPEEDS IN MPH		
	MAIN ROUTE		SITE CAPA CITY	FLOW		AV.DEL PER VEH (MINS)	AVERAGE QUEUE (VEH)	MAIN ROUTE		SITE
	DEMAND FLOW	PCT HEAVY		MAIN ROUTE	'DIVER TED'			WITHOUT WORK ZONE	WITH WORK ZONE	
MID-1 AM	609	0.0	3000	609	0	0.18	0	70.2	57.9	49.7
1-2 AM	447	0.0	3000	447	0	0.18	0	70.2	57.9	49.7
2-3 AM	436	0.0	3000	436	0	0.18	0	70.2	57.9	49.7
3-4 AM	558	0.0	3000	558	0	0.18	0	70.2	57.9	49.7
4-5 AM	1041	0.0	3000	1041	0	0.18	0	70.2	57.9	49.7
5-6 AM	2269	0.0	2999	2269	0	0.22	0	69.2	55.3	46.6
6-7 AM	3858	0.0	2999	3858	0	6.41	390	65.8	12.0	36.9
7-8 AM	3494	0.0	2999	3025	469	16.81+	904	67.7	8.3	36.9
8-9 AM	3353	0.0	3000	3010	342	16.78+	902	67.9	8.3	36.9
9-10 AM	2985	0.0	3000	2964	22	16.53+	887	68.3	8.3	36.9
10-11 AM	2860	0.0	2999	2860	0	14.65+	784	68.5	8.6	36.9
11AM-NOON	3065	0.0	3000	3065	0	13.75+	735	68.2	8.7	36.9
NOON-1PM	3307	0.0	3000	3124	184	16.24+	873	67.9	8.3	36.9
1-2 PM	3531	0.0	2999	3000	531	16.82+	904	67.6	8.3	36.9
2-3 PM	4119	0.0	2999	3025	1093	16.90+	917	64.0	8.2	36.9
3-4 PM	4547	0.0	3000	3055	1492	17.63+	964	61.1	8.1	36.9
4-5 PM	4843	0.0	2999	3000	1843	18.10+	995	59.1	8.1	36.9
5-6 PM	4882	0.0	3000	3001	1881	18.08+	995	58.8	8.1	36.9
6-7 PM	3810	0.0	3000	2928	882	17.01+	918	66.1	8.2	36.9
7-8 PM	2715	0.0	2999	2708	6	15.21+	817	68.7	8.5	36.9
8-9 PM	2199	0.0	2999	2199	0	2.46	262	69.3	22.5	44.6
9-10 PM	1992	0.0	3000	1992	0	0.18	0	69.6	57.7	49.7
10-11 PM	1515	0.0	3000	1515	0	0.18	0	70.2	57.9	49.7
11PM-MID	1039	0.0	3000	1039	0	0.18	0	70.2	57.9	49.7

+ INDICATES QUEUEING EXCEEDS USER-SPECIFIED MAXIMUM LIMIT

----- SITE BREAKDOWN DELAYS -----	
BREAKDOWN DURATION (MINS)	0
RANGE OF QUEUE DELAY - MIN (VEH-H) MAX	0.0
AV BREAKDOWNS PER DAY	0.00
AV QUEUE DELAY/DAY (VEH-H)	0.0
AV TOTAL DELAY/DAY (VEH-H)	0.0

----- SITE ACCIDENT DELAYS -----	
BREAKDOWN DURATION (MINS)	0
RANGE OF QUEUE DELAY - MIN (VEH-H) MAX	0
AV BREAKDOWNS PER DAY	0
AV QUEUE DELAY/DAY (VEH-H)	0
AV TOTAL DELAY/DAY (VEH-H)	0

AVERAGE ACCIDENT NUMBERS (PIA/DAY)	
MAIN ROUTE WITHOUT WORKS	0.0101
MAIN ROUTE WITH WORKS	0.0028
'DIVERSION'	0.0032

PIA: Personal Injury Accidents

ECONOMIC IMPACT ON ROAD USERS	
ROAD USER COSTS PER DAY	\$182,351
CONGESTED HOURS PER DAY*	13

*Delays Exceeding User-Specified Maximum

IH 94: CTH ZZ/COLLEGE AVE TO CTH BB/RAWSON AVE (MILWAUKEE COUNTY)
CONTINUOUS (24 HOUR) CLOSURE
NO DIVERSION ROUTE (MAX QUEUE METHOD)

OCTOBER

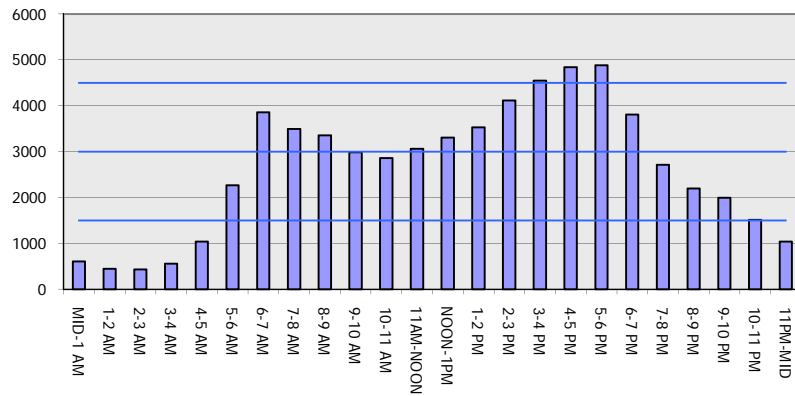
Analyzed for 2009
 Construction Season

GRAPHICAL REPRESENTATION OF TRAFFIC MODEL INPUT AND OUTPUT

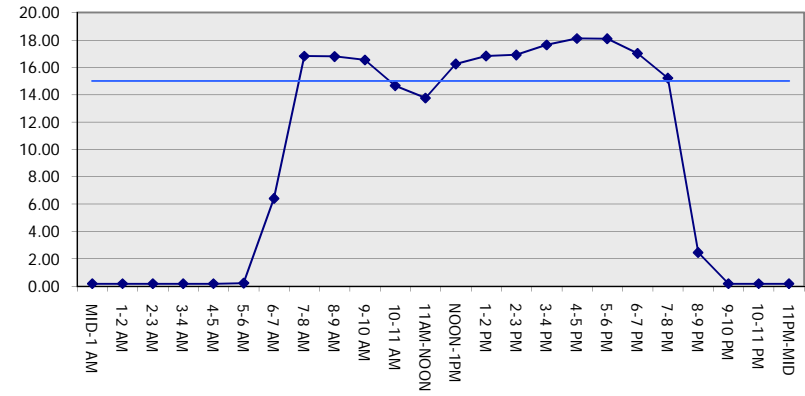
MON-THUR

EASTBOUND DIRECTION

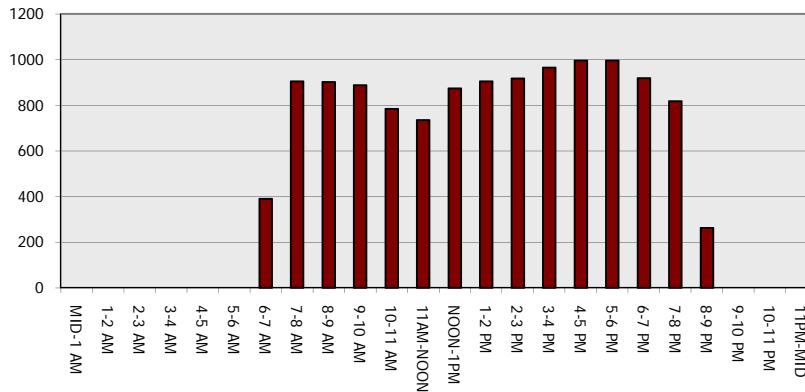
Main Route - Traffic Demand (Vehicles Per Hour)



Main Route Average Delay Per Vehicle (Minutes)



Main Route - Average Queue Length (Vehicles)



Main Route - Average Speed (MPH)

