

<b>IH 94: CTH ZZ/COLLEGE AVE TO CTH BB/RAWSON AVE (MILWAUKEE COUNTY)</b> <b>CONTINUOUS (24 HOUR) 2 LANE CLOSURE</b> <b>NO DIVERSION ROUTE (MAX QUEUE METHOD)</b>	<b>OCTOBER</b>
	Analyzed for 2009 Construction Season

**SUMMARY OF TRAFFIC MODEL OUTPUT**

FRIDAY WESTBOUND DIRECTION

TIME OF DAY	FLOWS AND CAPACITY IN VEH/HR						AVERAGE SPEEDS IN MPH				
	MAIN ROUTE		SITE CAPA CITY	FLOW		AV.DEL PER VEH (MINS)	AVERAGE QUEUE (VEH)	MAIN ROUTE		SITE	
	DEMAND FLOW	PCT HEAVY		MAIN ROUTE	'DIVER TED'			WITHOUT WORK ZONE	WITH WORK ZONE		
MID-1 AM	817	0.0	1499	817	0	1.46	121	70.2	27.8	42.8	
1-2 AM	524	0.0	1500	524	0	0.22	0	70.2	55.8	46.8	
2-3 AM	490	0.0	1500	490	0	0.22	0	70.2	56.0	46.9	
3-4 AM	560	0.0	1500	560	0	0.22	0	70.2	55.7	46.6	
4-5 AM	771	0.0	1500	771	0	0.24	0	70.2	55.0	45.8	
5-6 AM	2109	0.0	1499	2109	0	5.01+	201	69.4	12.3	32.5	
6-7 AM	4067	0.0	1500	1365	2702	16.71+	429	64.4	5.4	35.2	
7-8 AM	4537	0.0	1500	1500	3037	16.95+	435	61.2	5.3	32.5	
8-9 AM	3821	0.0	1500	1500	2321	17.08+	435	66.1	5.3	32.5	
9-10 AM	3340	0.0	1499	1481	1859	17.05+	433	67.9	5.4	32.5	
10-11 AM	3512	0.0	1499	1500	2012	17.11+	435	67.7	5.3	32.5	
11AM-NOON	3694	0.0	1500	1500	2194	17.09+	435	66.9	5.3	32.5	
NOON-1PM	3873	0.0	1500	1500	2373	17.07+	435	65.7	5.3	32.5	
1-2 PM	3898	0.0	1500	1500	2398	17.06+	435	65.5	5.3	32.5	
2-3 PM	4468	0.0	1500	1500	2968	16.97+	435	61.7	5.3	32.5	
3-4 PM	4674	0.0	1500	1500	3174	16.93+	435	60.2	5.3	32.5	
4-5 PM	4413	0.0	1500	1500	2913	16.98+	435	62.0	5.3	32.5	
5-6 PM	4450	0.0	1500	1500	2950	16.97+	435	61.7	5.3	32.5	
6-7 PM	4001	0.0	1500	1500	2501	17.05+	435	64.8	5.3	32.5	
7-8 PM	3368	0.0	1500	1491	1877	17.08+	434	67.9	5.3	32.5	
8-9 PM	2688	0.0	1499	1486	1202	16.69+	423	68.7	5.4	32.5	
9-10 PM	2538	0.0	1499	1496	1042	16.61+	421	68.9	5.5	32.5	
10-11 PM	2017	0.0	1500	1499	518	16.56+	420	69.6	5.5	32.5	
11PM-MID	1538	0.0	1500	1444	94	16.15+	409	70.1	5.5	32.5	

+ INDICATES QUEUEING EXCEEDS USER-SPECIFIED MAXIMUM LIMIT

*----- SITE BREAKDOWN DELAYS -----*	
BREAKDOWN DURATION (MINS)	0
RANGE OF QUEUE DELAY - MIN	0.0
(VEH-H) MAX	0.0
AV BREAKDOWNS PER DAY	0.00
AV QUEUE DELAY/DAY (VEH-H)	0.0
AV TOTAL DELAY/DAY (VEH-H)	0.0

*----- SITE ACCIDENT DELAYS -----*	
BREAKDOWN DURATION (MINS)	0
RANGE OF QUEUE DELAY - MIN	0
(VEH-H) MAX	0
AV BREAKDOWNS PER DAY	0
AV QUEUE DELAY/DAY (VEH-H)	0
AV TOTAL DELAY/DAY (VEH-H)	0

AVERAGE ACCIDENT NUMBERS (PIA/DAY)	
MAIN ROUTE WITHOUT WORKS	0.0112
MAIN ROUTE WITH WORKS	0.0016
'DIVERSION'	0.0141
PIA: Personal Injury Accidents	
IMPACTS ON ROAD USERS	
ROAD USER COSTS PER DAY	\$249,969
CONGESTED HOURS PER DAY*	19

\*Delays Exceeding User-Specified Maximum

**IH 94: CTH ZZ/COLLEGE AVE TO CTH BB/RAWSON AVE (MILWAUKEE COUNTY)**  
**CONTINUOUS (24 HOUR) 2 LANE CLOSURE**  
**NO DIVERSION ROUTE (MAX QUEUE METHOD)**

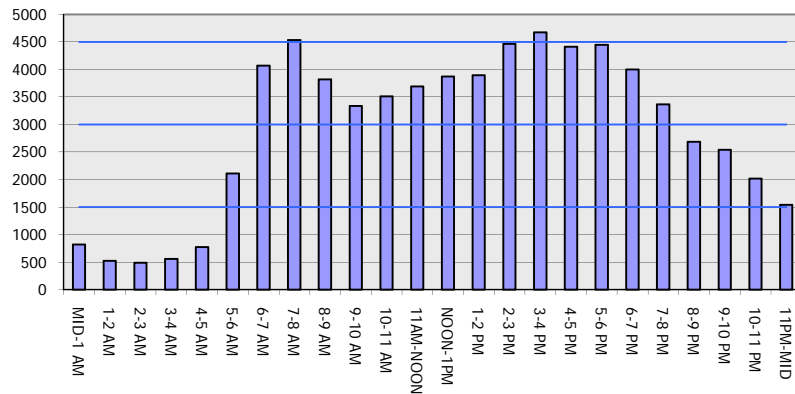
**OCTOBER**

Analyzed for 2009  
 Construction Season

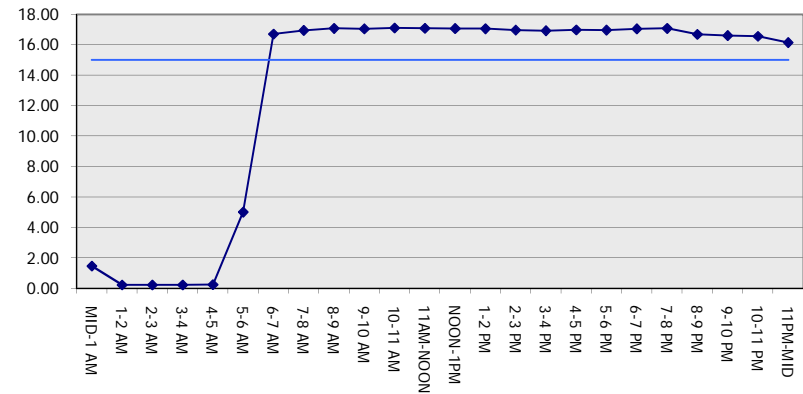
**GRAPHICAL REPRESENTATION OF TRAFFIC MODEL INPUT AND OUTPUT**

**FRIDAY WESTBOUND DIRECTION**

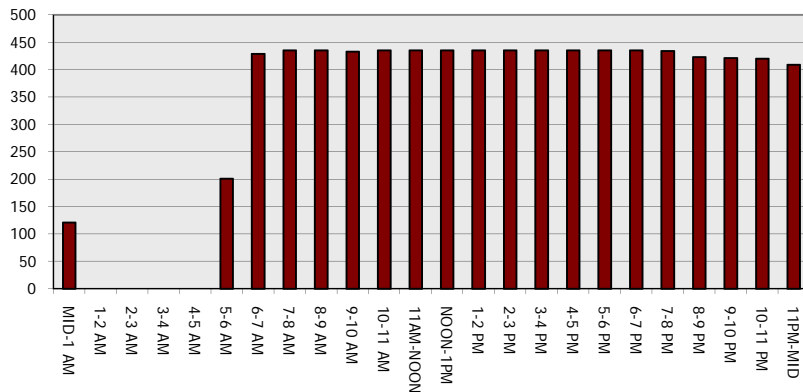
**Main Route - Traffic Demand (Vehicles Per Hour)**



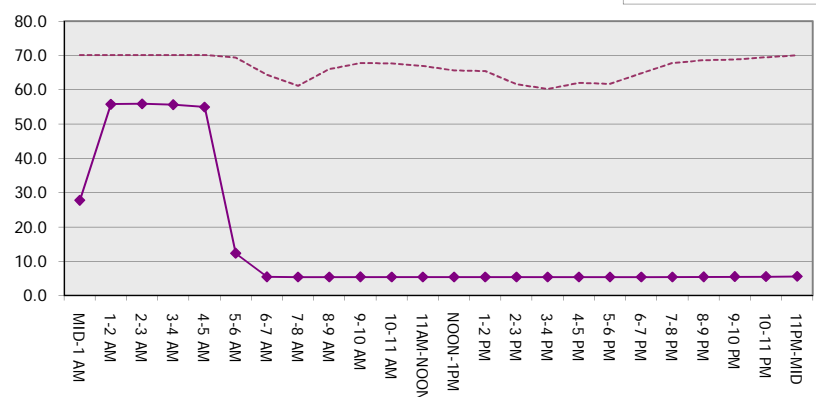
**Main Route Average Delay Per Vehicle (Minutes)**



**Main Route - Average Queue Length (Vehicles)**



**Main Route - Average Speed (MPH)**



<b>IH 94: CTH ZZ/COLLEGE AVE TO CTH BB/RAWSON AVE (MILWAUKEE COUNTY)</b> <b>CONTINUOUS (24 HOUR) 2 LANE CLOSURE</b> <b>NO DIVERSION ROUTE (MAX QUEUE METHOD)</b>	<b>OCTOBER</b>
	Analyzed for 2009 Construction Season

**SUMMARY OF TRAFFIC MODEL OUTPUT**

**FRIDAY EASTBOUND DIRECTION**

TIME OF DAY	FLOWS AND CAPACITY IN VEH/HR							AVERAGE SPEEDS IN MPH			
	MAIN ROUTE		SITE CAPA CITY	FLOW		AV.DEL PER VEH (MINS)	AVERAGE QUEUE (VEH)	MAIN ROUTE		SITE	
	DEMAND FLOW	PCT HEAVY		MAIN ROUTE	'DIVER TED'			WITHOUT WORK ZONE	WITH WORK ZONE		
MID-1 AM	713	0.0	1500	713	0	0.78	57	70.2	37.4	45.6	
1-2 AM	524	0.0	1500	524	0	0.22	0	70.2	55.8	46.8	
2-3 AM	509	0.0	1500	509	0	0.22	0	70.2	55.9	46.9	
3-4 AM	666	0.0	1500	666	0	0.23	0	70.2	55.3	46.2	
4-5 AM	1096	0.0	1499	1096	0	0.30	0	70.2	51.8	41.7	
5-6 AM	2196	0.0	1499	2029	166	7.35+	234	69.3	9.0	32.5	
6-7 AM	3706	0.0	1500	1467	2239	17.00+	433	66.8	5.4	32.5	
7-8 AM	3665	0.0	1499	1484	2181	17.05+	434	67.1	5.4	32.5	
8-9 AM	3240	0.0	1499	1471	1768	17.02+	432	68.0	5.4	32.5	
9-10 AM	3078	0.0	1499	1485	1593	17.00+	432	68.2	5.4	32.5	
10-11 AM	3151	0.0	1499	1499	1652	17.05+	433	68.1	5.4	32.5	
11AM-NOON	3397	0.0	1499	1500	1897	17.11+	435	67.8	5.3	32.5	
NOON-1PM	3706	0.0	1499	1500	2206	17.09+	435	66.8	5.3	32.5	
1-2 PM	3960	0.0	1499	1500	2460	17.05+	435	65.1	5.3	32.5	
2-3 PM	4536	0.0	1499	1500	3036	16.95+	435	61.2	5.3	32.5	
3-4 PM	4808	0.0	1500	1500	3308	16.90+	435	59.3	5.3	32.5	
4-5 PM	5164	0.0	1500	1500	3664	16.83+	435	56.9	5.3	32.5	
5-6 PM	5050	0.0	1500	1500	3550	16.86+	435	57.6	5.3	32.5	
6-7 PM	3979	0.0	1499	1500	2479	17.05+	435	65.0	5.3	32.5	
7-8 PM	2990	0.0	1500	1495	1495	16.91+	430	68.3	5.4	32.5	
8-9 PM	2328	0.0	1500	1499	830	16.58+	420	69.1	5.5	32.5	
9-10 PM	2260	0.0	1499	1499	760	16.58+	420	69.2	5.5	32.5	
10-11 PM	1872	0.0	1500	1499	373	16.56+	419	69.7	5.5	32.5	
11PM-MID	1372	0.0	1499	1353	19	15.04+	382	70.2	5.7	32.5	

+ INDICATES QUEUEING EXCEEDS USER-SPECIFIED MAXIMUM LIMIT

*----- SITE BREAKDOWN DELAYS -----*	
BREAKDOWN DURATION (MINS)	0
RANGE OF QUEUE DELAY - MIN (VEH-H) MAX	0.0
AV BREAKDOWNS PER DAY	0.00
AV QUEUE DELAY/DAY (VEH-H)	0.0
AV TOTAL DELAY/DAY (VEH-H)	0.0

*----- SITE ACCIDENT DELAYS -----*	
BREAKDOWN DURATION (MINS)	0
RANGE OF QUEUE DELAY - MIN (VEH-H) MAX	0
AV BREAKDOWNS PER DAY	0
AV QUEUE DELAY/DAY (VEH-H)	0
AV TOTAL DELAY/DAY (VEH-H)	0

AVERAGE ACCIDENT NUMBERS (PIA/DAY)	
MAIN ROUTE WITHOUT WORKS	0.0108
MAIN ROUTE WITH WORKS	0.0016
'DIVERSION'	0.0132

PIA: Personal Injury Accidents

ECONOMIC IMPACT ON ROAD USERS	
ROAD USER COSTS PER DAY	\$240,472
CONGESTED HOURS PER DAY*	19

\*Delays Exceeding User-Specified Maximum

**IH 94: CTH ZZ/COLLEGE AVE TO CTH BB/RAWSON AVE (MILWAUKEE COUNTY)**  
**CONTINUOUS (24 HOUR) 2 LANE CLOSURE**  
**NO DIVERSION ROUTE (MAX QUEUE METHOD)**

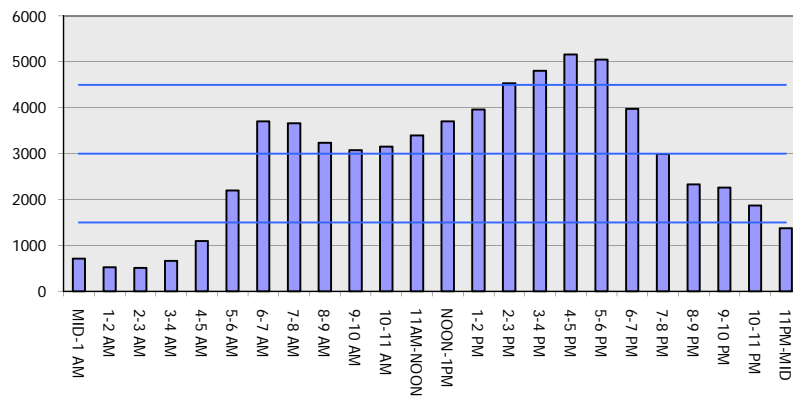
**OCTOBER**

Analyzed for 2009  
 Construction Season

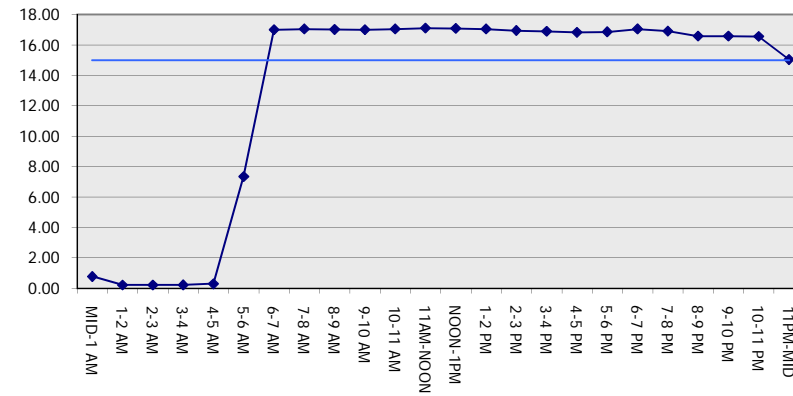
**GRAPHICAL REPRESENTATION OF TRAFFIC MODEL INPUT AND OUTPUT**

**FRIDAY EASTBOUND DIRECTION**

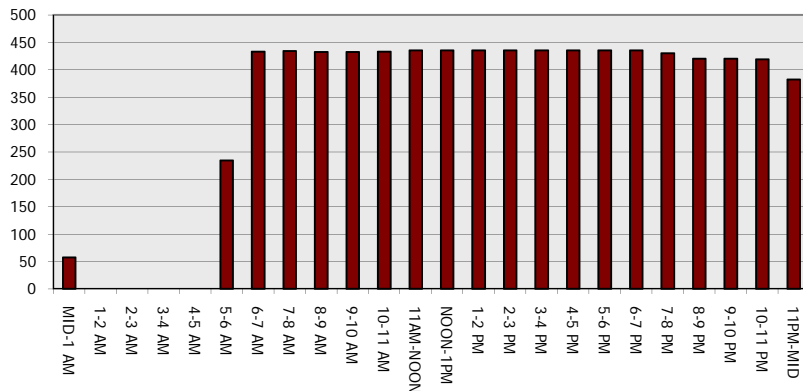
**Main Route - Traffic Demand (Vehicles Per Hour)**



**Main Route Average Delay Per Vehicle (Minutes)**



**Main Route - Average Queue Length (Vehicles)**



**Main Route - Average Speed (MPH)**

