

<b>USH 45: CTH E TO STH 190 (MILWAUKEE COUNTY)                  CONTINUOUS (24 HOUR) 2 LANE CLOSURE                  NO DIVERSION ROUTE (MAX QUEUE METHOD)</b>	<b>OCTOBER</b>
	Analyzed for 2009 Construction Season

**SUMMARY OF TRAFFIC MODEL OUTPUT**

MON-THUR                  SOUTHBOUND DIRECTION

TIME OF DAY	FLOWS AND CAPACITY IN VEH/HR							AVERAGE SPEEDS IN MPH			
	MAIN ROUTE		SITE CAPA CITY	FLOW		AV.DEL PER VEH (MINS)	AVERAGE QUEUE (VEH)	MAIN ROUTE		SITE	
	DEMAND FLOW	PCT HEAVY		MAIN ROUTE	'DIVER TED'			WITHOUT WORK ZONE	WITH WORK ZONE		
MID-1 AM	584	0.0	1500	584	0	0.71	8	70.0	48.9	43.2	
1-2 AM	431	0.0	1500	431	0	0.53	0	70.2	53.0	43.8	
2-3 AM	386	0.0	1500	386	0	0.52	0	70.2	53.2	44.0	
3-4 AM	464	0.0	1500	464	0	0.53	0	70.2	52.9	43.7	
4-5 AM	835	0.0	1500	835	0	0.57	0	69.7	51.7	42.3	
5-6 AM	2366	0.0	1499	2018	347	7.21+	228	67.8	13.7	30.8	
6-7 AM	5192	0.0	1500	1500	3692	16.75+	423	55.4	7.3	31.2	
7-8 AM	5750	0.0	1500	1500	4250	16.56+	423	51.5	7.3	31.2	
8-9 AM	5296	0.0	1500	1500	3796	16.72+	423	54.6	7.3	31.2	
9-10 AM	4237	0.0	1500	1492	2745	17.00+	422	61.9	7.3	31.2	
10-11 AM	3993	0.0	1499	1490	2503	17.08+	422	63.6	7.3	30.8	
11AM-NOON	4247	0.0	1499	1500	2747	17.04+	423	61.9	7.3	30.8	
NOON-1PM	4402	0.0	1500	1500	2902	17.01+	423	60.8	7.3	30.8	
1-2 PM	4262	0.0	1500	1500	2762	17.04+	423	61.7	7.3	30.8	
2-3 PM	5100	0.0	1500	1500	3600	16.81+	423	56.0	7.3	30.8	
3-4 PM	4985	0.0	1500	1500	3485	16.84+	423	56.8	7.3	30.8	
4-5 PM	4209	0.0	1500	1500	2709	17.05+	423	62.1	7.3	30.8	
5-6 PM	3921	0.0	1499	1494	2428	17.10+	423	64.1	7.3	30.8	
6-7 PM	4185	0.0	1499	1500	2685	17.06+	423	62.3	7.3	30.8	
7-8 PM	2842	0.0	1499	1471	1371	17.07+	419	67.2	7.3	30.8	
8-9 PM	2212	0.0	1499	1495	717	16.92+	414	68.0	7.3	30.8	
9-10 PM	1965	0.0	1499	1486	479	16.87+	413	68.3	7.3	30.8	
10-11 PM	1537	0.0	1499	1436	101	16.41+	401	68.8	7.5	30.8	
11PM-MID	1238	0.0	1499	1238	0	11.19	280	69.2	9.6	32.1	

+ INDICATES QUEUEING EXCEEDS USER-SPECIFIED MAXIMUM LIMIT

*----- SITE BREAKDOWN DELAYS -----*	
BREAKDOWN DURATION (MINS)	0
RANGE OF QUEUE DELAY - MIN (VEH-H) MAX	0.0
AV BREAKDOWNS PER DAY	0.00
AV QUEUE DELAY/DAY (VEH-H)	0.0
AV TOTAL DELAY/DAY (VEH-H)	0.0

*----- SITE ACCIDENT DELAYS -----*	
BREAKDOWN DURATION (MINS)	0
RANGE OF QUEUE DELAY - MIN (VEH-H) MAX	0
AV BREAKDOWNS PER DAY	0
AV QUEUE DELAY/DAY (VEH-H)	0
AV TOTAL DELAY/DAY (VEH-H)	0

AVERAGE ACCIDENT NUMBERS (PIA/DAY)	
MAIN ROUTE WITHOUT WORKS	0.0226
MAIN ROUTE WITH WORKS	0.0074
'DIVERSION'	0.0304
<small>PIA: Personal Injury Accidents</small>	
IMPACTS ON ROAD USERS	
ROAD USER COSTS PER DAY	\$258,038
CONGESTED HOURS PER DAY*	18

\*Delays Exceeding User-Specified Maximum

**USH 45: CTH E TO STH 190 (MILWAUKEE COUNTY)  
CONTINUOUS (24 HOUR) 2 LANE CLOSURE  
NO DIVERSION ROUTE (MAX QUEUE METHOD)**

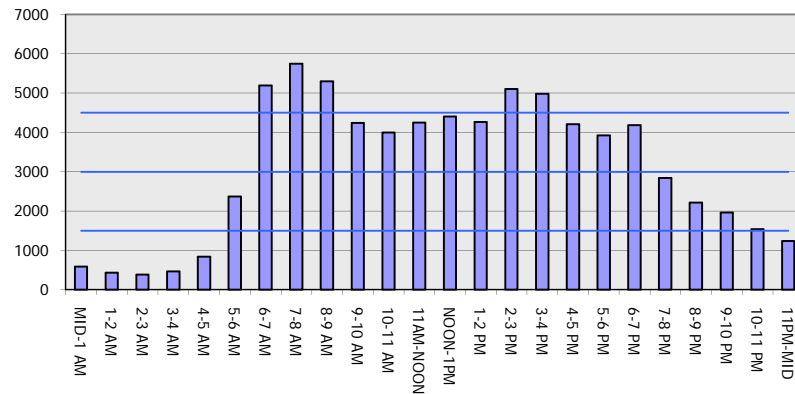
**OCTOBER**

Analyzed for 2009  
Construction Season

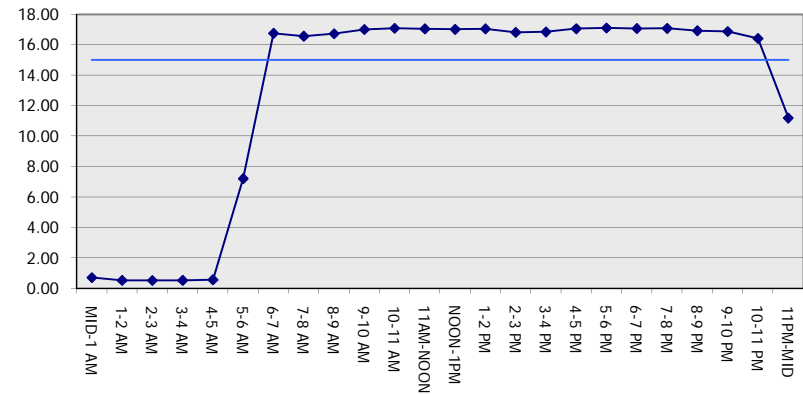
**GRAPHICAL REPRESENTATION OF TRAFFIC MODEL INPUT AND OUTPUT**

**MON-THUR SOUTHBOUND DIRECTION**

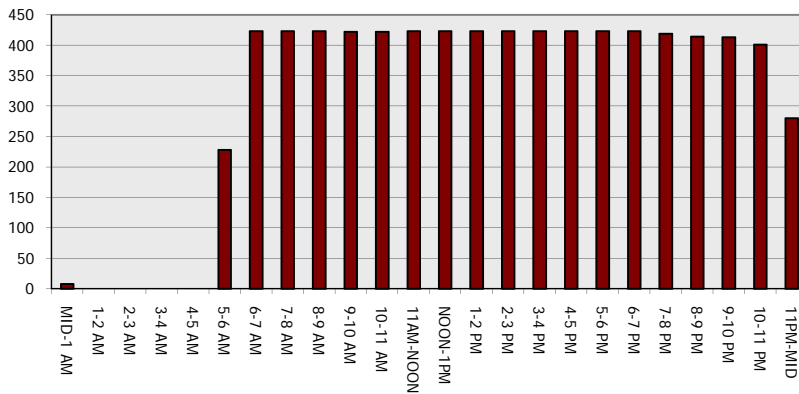
**Main Route - Traffic Demand (Vehicles Per Hour)**



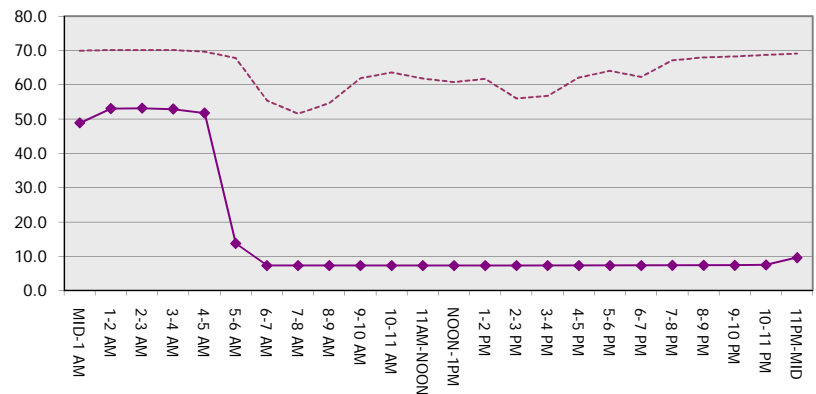
**Main Route Average Delay Per Vehicle (Minutes)**



**Main Route - Average Queue Length (Vehicles)**



**Main Route - Average Speed (MPH)**



<b>USH 45: CTH E TO STH 190 (MILWAUKEE COUNTY)</b> <b>CONTINUOUS (24 HOUR) 2 LANE CLOSURE</b> <b>NO DIVERSION ROUTE (MAX QUEUE METHOD)</b>	<b>OCTOBER</b>
	Analyzed for 2009 Construction Season

**SUMMARY OF TRAFFIC MODEL OUTPUT**

MON-THUR                      NORTHBOUND DIRECTION

TIME OF DAY	FLOWS AND CAPACITY IN VEH/HR							AVERAGE SPEEDS IN MPH			
	MAIN ROUTE		SITE CAPA CITY	FLOW		AV.DEL PER VEH (MINS)	AVERAGE QUEUE (VEH)	MAIN ROUTE		SITE	
	DEMAND FLOW	PCT HEAVY		MAIN ROUTE	'DIVER TED'			WITHOUT WORK ZONE	WITH WORK ZONE		
MID-1 AM	782	0.0	1500	782	0	1.28	46	69.7	39.1	42.2	
1-2 AM	627	0.0	1500	627	0	0.55	0	69.9	52.4	43.0	
2-3 AM	591	0.0	1500	591	0	0.54	0	70.0	52.5	43.2	
3-4 AM	662	0.0	1500	662	0	0.55	0	69.9	52.3	42.9	
4-5 AM	1228	0.0	1499	1228	0	0.96	5	69.2	43.8	36.4	
5-6 AM	3174	0.0	1500	1940	1234	14.09+	360	66.8	8.3	33.7	
6-7 AM	5320	0.0	1499	1500	3820	16.74+	423	54.5	7.3	30.8	
7-8 AM	6186	0.0	1500	1500	4686	16.43+	423	48.6	7.3	30.8	
8-9 AM	5442	0.0	1500	1500	3942	16.70+	423	53.7	7.3	30.8	
9-10 AM	4225	0.0	1500	1500	2725	17.05+	423	62.0	7.3	30.8	
10-11 AM	3969	0.0	1500	1500	2469	17.11+	423	63.7	7.3	30.8	
11AM-NOON	4174	0.0	1500	1500	2674	17.06+	423	62.3	7.3	30.8	
NOON-1PM	4359	0.0	1500	1500	2859	17.02+	423	61.1	7.3	30.8	
1-2 PM	4393	0.0	1500	1500	2893	17.01+	423	60.9	7.3	30.8	
2-3 PM	5218	0.0	1500	1500	3718	16.77+	423	55.2	7.3	30.8	
3-4 PM	5941	0.0	1500	1500	4441	16.52+	423	50.3	7.3	30.8	
4-5 PM	6383	0.0	1500	1500	4883	16.34+	423	47.3	7.3	30.8	
5-6 PM	6184	0.0	1500	1500	4684	16.43+	423	48.6	7.3	30.8	
6-7 PM	4585	0.0	1500	1500	3085	16.96+	423	59.6	7.3	30.8	
7-8 PM	3151	0.0	1499	1481	1670	17.14+	421	66.8	7.3	30.8	
8-9 PM	2690	0.0	1499	1487	1202	16.98+	417	67.4	7.3	30.8	
9-10 PM	2538	0.0	1499	1496	1041	16.93+	415	67.6	7.3	30.8	
10-11 PM	1948	0.0	1500	1499	449	16.91+	414	68.3	7.3	30.8	
11PM-MID	1334	0.0	1499	1319	16	14.86+	364	69.1	7.9	30.8	

+ INDICATES QUEUEING EXCEEDS USER-SPECIFIED MAXIMUM LIMIT

BREAKDOWN DURATION (MINS)	0
RANGE OF QUEUE DELAY - MIN (VEH-H) MAX	0.0
AV BREAKDOWNS PER DAY	0.00
AV QUEUE DELAY/DAY (VEH-H)	0.0
AV TOTAL DELAY/DAY (VEH-H)	0.0

BREAKDOWN DURATION (MINS)	0
RANGE OF QUEUE DELAY - MIN (VEH-H) MAX	0
AV BREAKDOWNS PER DAY	0
AV QUEUE DELAY/DAY (VEH-H)	0
AV TOTAL DELAY/DAY (VEH-H)	0

MAIN ROUTE WITHOUT WORKS	0.0258
MAIN ROUTE WITH WORKS	0.0077
'DIVERSION'	0.0368

PIA: Personal Injury Accidents

ROAD USER COSTS PER DAY	\$294,281
CONGESTED HOURS PER DAY*	19

\*Delays Exceeding User-Specified Maximum

**USH 45: CTH E TO STH 190 (MILWAUKEE COUNTY)  
CONTINUOUS (24 HOUR) 2 LANE CLOSURE  
NO DIVERSION ROUTE (MAX QUEUE METHOD)**

**OCTOBER**

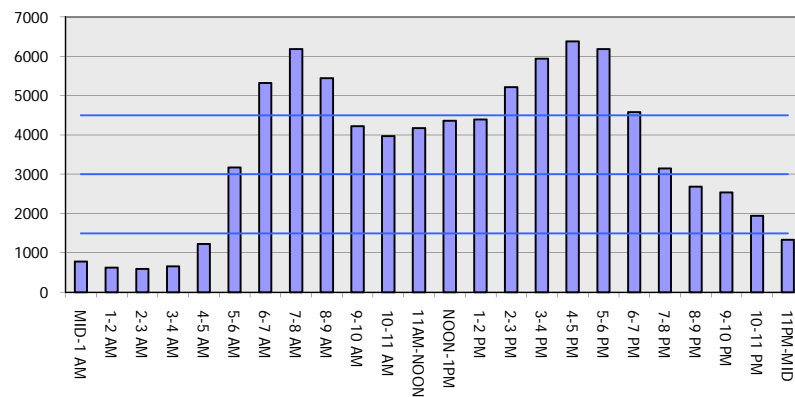
Analyzed for 2009  
Construction Season

**GRAPHICAL REPRESENTATION OF TRAFFIC MODEL INPUT AND OUTPUT**

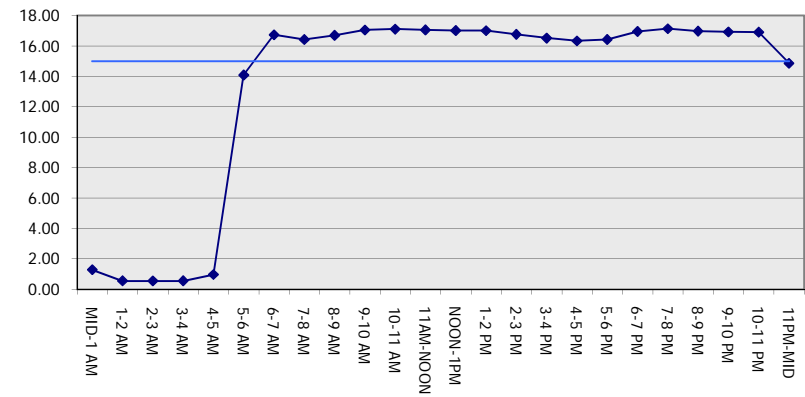
**MON-THUR**

**NORTHBOUND DIRECTION**

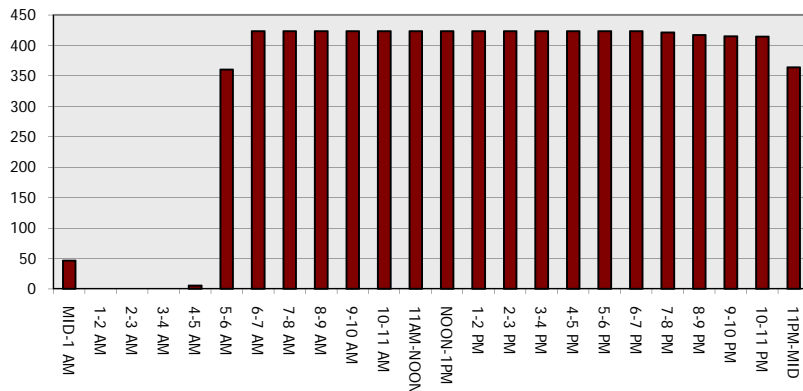
**Main Route - Traffic Demand (Vehicles Per Hour)**



**Main Route Average Delay Per Vehicle (Minutes)**



**Main Route - Average Queue Length (Vehicles)**



**Main Route - Average Speed (MPH)**

