

<b>USH 45: CTH E TO STH 190 (MILWAUKEE COUNTY)                  CONTINUOUS (24 HOUR) CLOSURE                  NO DIVERSION ROUTE (MAX QUEUE METHOD)</b>	<b>OCTOBER</b>
	Analyzed for 2009 Construction Season

**SUMMARY OF TRAFFIC MODEL OUTPUT**

MON-THUR                  SOUTHBOUND DIRECTION

TIME OF DAY	FLOWS AND CAPACITY IN VEH/HR						AVERAGE SPEEDS IN MPH			
	MAIN ROUTE		SITE CAPA CITY	FLOW		AV.DEL PER VEH (MINS)	AVERAGE QUEUE (VEH)	MAIN ROUTE		SITE
	DEMAND FLOW	PCT HEAVY		MAIN ROUTE	'DIVER TED'			WITHOUT WORK ZONE	WITH WORK ZONE	
MID-1 AM	584	0.0	3000	584	0	0.36	0	70.0	57.4	49.7
1-2 AM	431	0.0	3000	431	0	0.36	0	70.2	57.4	49.7
2-3 AM	386	0.0	3000	386	0	0.36	0	70.2	57.4	49.7
3-4 AM	464	0.0	3000	464	0	0.36	0	70.2	57.4	49.7
4-5 AM	835	0.0	3000	835	0	0.35	0	69.7	57.3	49.7
5-6 AM	2366	0.0	2999	2366	0	0.49	0	67.8	52.5	44.2
6-7 AM	5192	0.0	2999	3885	1308	12.20+	705	55.4	11.4	37.3
7-8 AM	5750	0.0	3000	3000	2750	17.37+	968	51.5	9.7	37.3
8-9 AM	5296	0.0	2999	3012	2285	17.57+	966	54.6	9.7	37.3
9-10 AM	4237	0.0	3000	3014	1223	17.18+	920	61.9	9.9	37.3
10-11 AM	3993	0.0	2999	2996	997	16.96+	903	63.6	9.9	37.3
11AM-NOON	4247	0.0	2999	3020	1227	17.15+	918	61.9	9.9	37.3
NOON-1PM	4402	0.0	3000	3013	1389	17.43+	937	60.8	9.8	37.3
1-2 PM	4262	0.0	3000	2994	1268	17.23+	923	61.7	9.9	37.3
2-3 PM	5100	0.0	2999	3000	2100	17.69+	968	56.0	9.7	37.3
3-4 PM	4985	0.0	3000	3000	1985	17.74+	968	56.8	9.7	37.3
4-5 PM	4209	0.0	3000	2977	1232	17.21+	921	62.1	9.9	37.3
5-6 PM	3921	0.0	2999	2996	925	16.97+	902	64.1	9.9	37.3
6-7 PM	4185	0.0	2999	3006	1179	17.12+	916	62.3	9.9	37.3
7-8 PM	2842	0.0	3000	2782	61	16.01+	843	67.2	10.2	37.3
8-9 PM	2212	0.0	2999	2212	0	4.29	331	68.0	21.5	43.8
9-10 PM	1965	0.0	3000	1965	0	0.34	0	68.3	56.9	49.7
10-11 PM	1537	0.0	3000	1537	0	0.34	0	68.8	57.1	49.7
11PM-MID	1238	0.0	3000	1238	0	0.35	0	69.2	57.1	49.7

+ INDICATES QUEUEING EXCEEDS USER-SPECIFIED MAXIMUM LIMIT

*----- SITE BREAKDOWN DELAYS -----*	
BREAKDOWN DURATION (MINS)	0
RANGE OF QUEUE DELAY - MIN (VEH-H) MAX	0.0
AV BREAKDOWNS PER DAY	0.00
AV QUEUE DELAY/DAY (VEH-H)	0.0
AV TOTAL DELAY/DAY (VEH-H)	0.0

*----- SITE ACCIDENT DELAYS -----*	
BREAKDOWN DURATION (MINS)	0
RANGE OF QUEUE DELAY - MIN (VEH-H) MAX	0
AV BREAKDOWNS PER DAY	0
AV QUEUE DELAY/DAY (VEH-H)	0
AV TOTAL DELAY/DAY (VEH-H)	0

AVERAGE ACCIDENT NUMBERS (PIA/DAY)	
MAIN ROUTE WITHOUT WORKS	0.0226
MAIN ROUTE WITH WORKS	0.0129
'DIVERSION'	0.0140
<small>PIA: Personal Injury Accidents</small>	
IMPACTS ON ROAD USERS	
ROAD USER COSTS PER DAY	\$233,282
CONGESTED HOURS PER DAY*	14

\*Delays Exceeding User-Specified Maximum

**USH 45: CTH E TO STH 190 (MILWAUKEE COUNTY)  
CONTINUOUS (24 HOUR) CLOSURE  
NO DIVERSION ROUTE (MAX QUEUE METHOD)**

**OCTOBER**

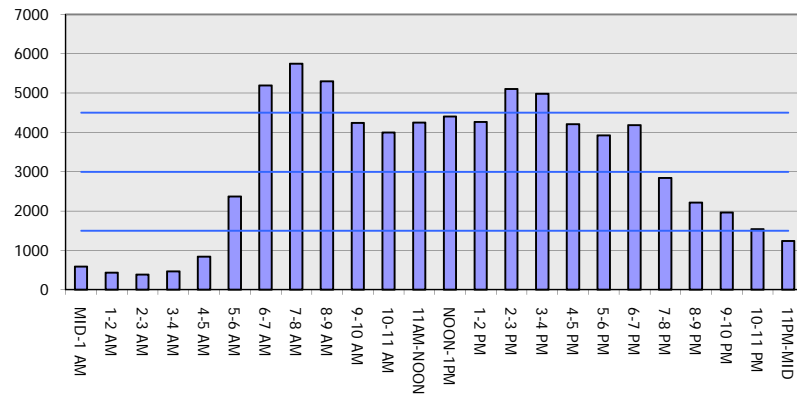
Analyzed for 2009  
Construction Season

**GRAPHICAL REPRESENTATION OF TRAFFIC MODEL INPUT AND OUTPUT**

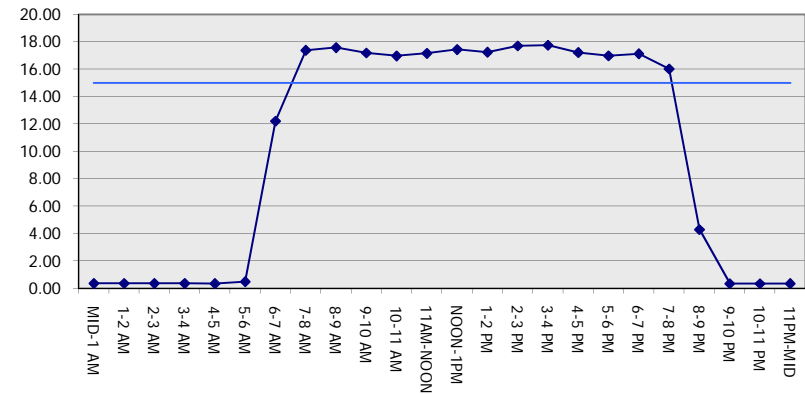
**MON-THUR**

**SOUTHBOUND DIRECTION**

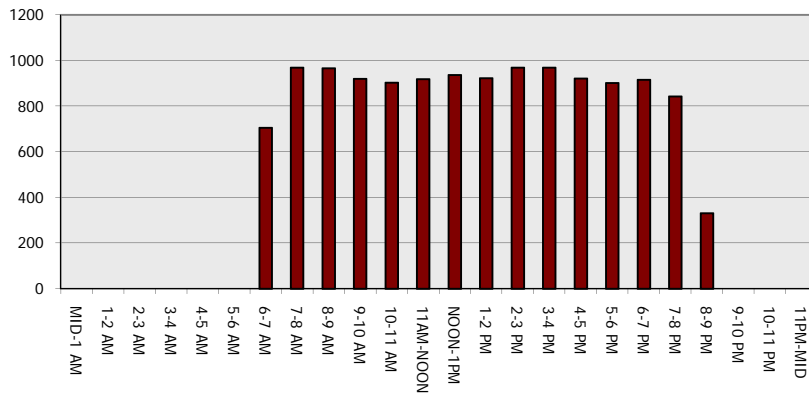
**Main Route - Traffic Demand (Vehicles Per Hour)**



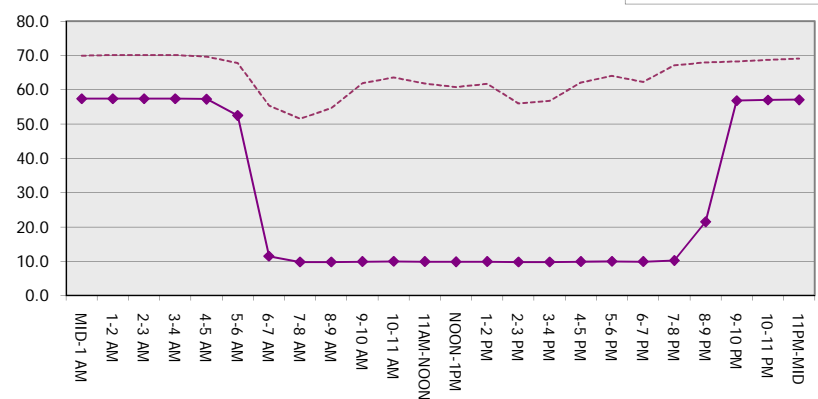
**Main Route Average Delay Per Vehicle (Minutes)**



**Main Route - Average Queue Length (Vehicles)**



**Main Route - Average Speed (MPH)**



<b>USH 45: CTH E TO STH 190 (MILWAUKEE COUNTY)                  CONTINUOUS (24 HOUR) CLOSURE                  NO DIVERSION ROUTE (MAX QUEUE METHOD)</b>	<b>OCTOBER</b>
	Analyzed for 2009 Construction Season

**SUMMARY OF TRAFFIC MODEL OUTPUT**

MON-THUR                      NORTHBOUND DIRECTION

TIME OF DAY	FLOWS AND CAPACITY IN VEH/HR							AVERAGE SPEEDS IN MPH			
	MAIN ROUTE		SITE CAPA CITY	FLOW		AV.DEL PER VEH (MINS)	AVERAGE QUEUE (VEH)	MAIN ROUTE		SITE	
	DEMAND FLOW	PCT HEAVY		MAIN ROUTE	'DIVER TED'			WITHOUT WORK ZONE	WITH WORK ZONE		
MID-1 AM	782	0.0	3000	782	0	0.35	0	69.7	57.3	49.7	
1-2 AM	627	0.0	3000	627	0	0.36	0	69.9	57.4	49.7	
2-3 AM	591	0.0	3000	591	0	0.36	0	70.0	57.4	49.7	
3-4 AM	662	0.0	3000	662	0	0.36	0	69.9	57.4	49.7	
4-5 AM	1228	0.0	3000	1228	0	0.35	0	69.2	57.2	49.7	
5-6 AM	3174	0.0	2999	3174	0	1.44	85	66.8	36.2	40.2	
6-7 AM	5320	0.0	3000	3614	1707	15.52+	868	54.5	10.2	37.5	
7-8 AM	6186	0.0	2999	3000	3186	17.12+	968	48.6	9.7	37.3	
8-9 AM	5442	0.0	3000	3000	2441	17.53+	968	53.7	9.7	37.3	
9-10 AM	4225	0.0	3000	2958	1267	17.31+	927	62.0	9.9	37.3	
10-11 AM	3969	0.0	2999	2994	975	16.96+	902	63.7	9.9	37.3	
11AM-NOON	4174	0.0	2999	3010	1164	17.04+	911	62.3	9.9	37.3	
NOON-1PM	4359	0.0	3000	3019	1339	17.34+	931	61.1	9.8	37.3	
1-2 PM	4393	0.0	3000	3014	1378	17.41+	936	60.9	9.8	37.3	
2-3 PM	5218	0.0	2999	3000	2218	17.63+	968	55.2	9.7	37.3	
3-4 PM	5941	0.0	3000	3000	2941	17.26+	968	50.3	9.7	37.3	
4-5 PM	6383	0.0	3000	3000	3383	17.00+	968	47.3	9.7	37.3	
5-6 PM	6184	0.0	3000	3000	3184	17.12+	968	48.6	9.7	37.3	
6-7 PM	4585	0.0	3000	2963	1622	17.51+	946	59.6	9.8	37.3	
7-8 PM	3151	0.0	3000	2944	207	16.87+	890	66.8	10.0	37.3	
8-9 PM	2690	0.0	2999	2690	0	13.79+	723	67.4	10.8	37.3	
9-10 PM	2538	0.0	3000	2538	0	6.33	341	67.6	15.8	39.3	
10-11 PM	1948	0.0	3000	1948	0	0.39	4	68.3	55.4	49.7	
11PM-MID	1334	0.0	3000	1334	0	0.35	0	69.1	57.1	49.7	

+ INDICATES QUEUEING EXCEEDS USER-SPECIFIED MAXIMUM LIMIT

BREAKDOWN DURATION (MINS)	0
RANGE OF QUEUE DELAY - MIN (VEH-H) MAX	0.0
AV BREAKDOWNS PER DAY	0.00
AV QUEUE DELAY/DAY (VEH-H)	0.0
AV TOTAL DELAY/DAY (VEH-H)	0.0

BREAKDOWN DURATION (MINS)	0
RANGE OF QUEUE DELAY - MIN (VEH-H) MAX	0
AV BREAKDOWNS PER DAY	0
AV QUEUE DELAY/DAY (VEH-H)	0
AV TOTAL DELAY/DAY (VEH-H)	0

MAIN ROUTE WITHOUT WORKS	0.0258
MAIN ROUTE WITH WORKS	0.0137
'DIVERSION'	0.0189

PIA: Personal Injury Accidents

ROAD USER COSTS PER DAY	\$273,134
CONGESTED HOURS PER DAY*	15

\*Delays Exceeding User-Specified Maximum

**USH 45: CTH E TO STH 190 (MILWAUKEE COUNTY)  
CONTINUOUS (24 HOUR) CLOSURE  
NO DIVERSION ROUTE (MAX QUEUE METHOD)**

**OCTOBER**

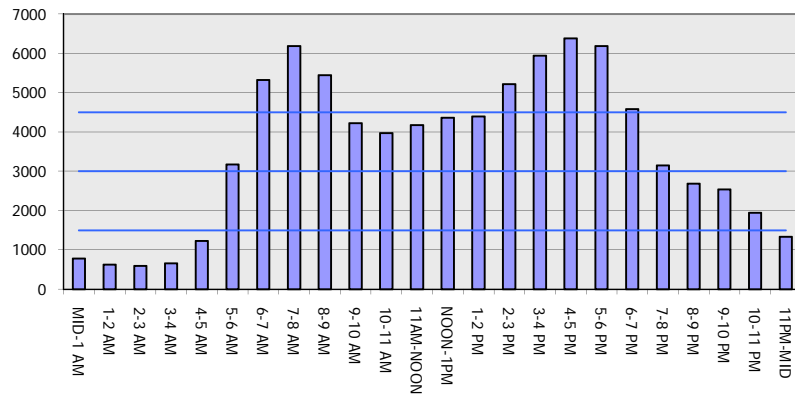
Analyzed for 2009  
Construction Season

**GRAPHICAL REPRESENTATION OF TRAFFIC MODEL INPUT AND OUTPUT**

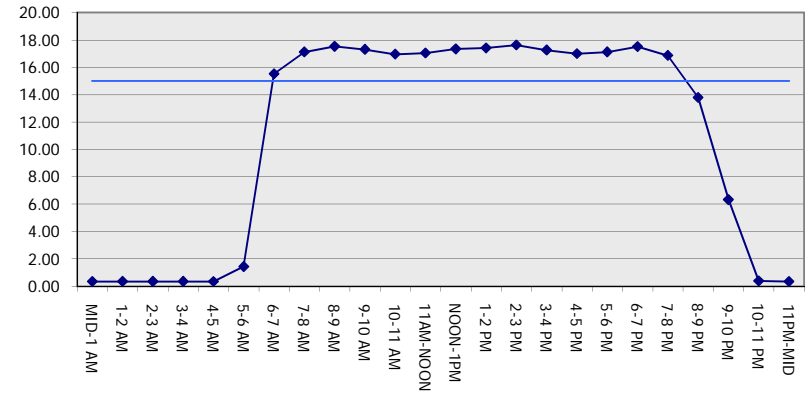
**MON-THUR**

**NORTHBOUND DIRECTION**

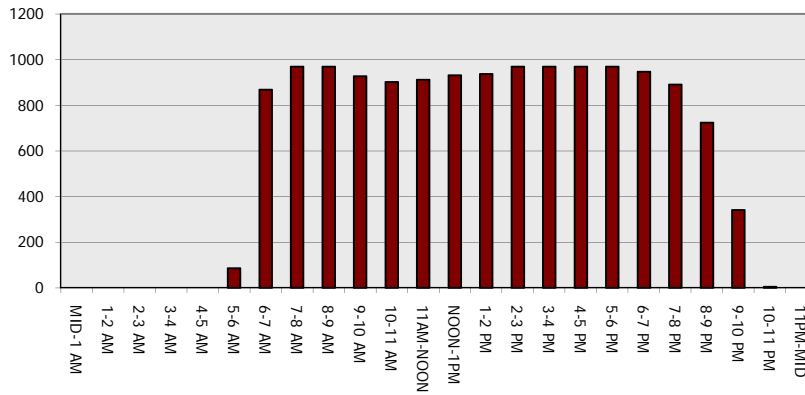
**Main Route - Traffic Demand (Vehicles Per Hour)**



**Main Route Average Delay Per Vehicle (Minutes)**



**Main Route - Average Queue Length (Vehicles)**



**Main Route - Average Speed (MPH)**

