

USH 45: CTH E TO STH 190 (MILWAUKEE COUNTY) CONTINUOUS (24 HOUR) 2 LANE CLOSURE NO DIVERSION ROUTE (MAX QUEUE METHOD)	OCTOBER
	Analyzed for 2009 Construction Season

SUMMARY OF TRAFFIC MODEL OUTPUT

FRIDAY SOUTHBOUND DIRECTION

TIME OF DAY	FLOWS AND CAPACITY IN VEH/HR						AVERAGE SPEEDS IN MPH				
	MAIN ROUTE		SITE CAPA CITY	FLOW		AV.DEL PER VEH (MINS)	AVERAGE QUEUE (VEH)	MAIN ROUTE		SITE	
	DEMAND FLOW	PCT HEAVY		MAIN ROUTE	'DIVER TED'			WITHOUT WORK ZONE	WITH WORK ZONE		
MID-1 AM	728	0.0	1499	728	0	2.07	110	69.8	31.2	41.2	
1-2 AM	482	0.0	1500	482	0	0.53	0	70.1	52.8	43.6	
2-3 AM	423	0.0	1500	423	0	0.52	0	70.2	53.0	43.8	
3-4 AM	495	0.0	1500	495	0	0.53	0	70.1	52.8	43.5	
4-5 AM	814	0.0	1500	814	0	0.57	0	69.7	51.8	42.4	
5-6 AM	2260	0.0	1499	2105	154	6.29+	217	67.9	15.3	30.8	
6-7 AM	4962	0.0	1500	1429	3533	16.52+	420	56.9	7.4	34.5	
7-8 AM	5760	0.0	1500	1500	4260	16.51+	423	51.5	7.3	32.1	
8-9 AM	5046	0.0	1500	1500	3546	16.74+	423	56.4	7.3	32.1	
9-10 AM	4449	0.0	1499	1488	2961	16.88+	422	60.5	7.3	32.1	
10-11 AM	3419	0.0	1499	1466	1953	17.08+	420	66.5	7.3	31.1	
11AM-NOON	4665	0.0	1499	1500	3165	16.94+	423	59.0	7.3	30.8	
NOON-1PM	4892	0.0	1500	1500	3392	16.87+	423	57.4	7.3	30.8	
1-2 PM	5002	0.0	1500	1500	3502	16.84+	423	56.7	7.3	30.8	
2-3 PM	5664	0.0	1500	1500	4164	16.62+	423	52.2	7.3	30.8	
3-4 PM	4713	0.0	1500	1500	3213	16.92+	423	58.7	7.3	30.8	
4-5 PM	4548	0.0	1500	1500	3048	16.97+	423	59.8	7.3	30.8	
5-6 PM	4309	0.0	1500	1500	2809	17.03+	423	61.4	7.3	30.8	
6-7 PM	4192	0.0	1500	1500	2692	17.06+	423	62.2	7.3	30.8	
7-8 PM	3397	0.0	1499	1477	1920	17.12+	421	66.5	7.3	30.8	
8-9 PM	2549	0.0	1499	1486	1063	16.98+	416	67.6	7.3	30.8	
9-10 PM	2447	0.0	1499	1494	953	16.94+	415	67.7	7.3	30.8	
10-11 PM	1861	0.0	1499	1494	368	16.89+	413	68.4	7.3	30.8	
11PM-MID	1559	0.0	1499	1440	119	16.66+	407	68.8	7.4	30.8	

+ INDICATES QUEUEING EXCEEDS USER-SPECIFIED MAXIMUM LIMIT

----- SITE BREAKDOWN DELAYS -----	
BREAKDOWN DURATION (MINS)	0
RANGE OF QUEUE DELAY - MIN (VEH-H) MAX	0.0
AV BREAKDOWNS PER DAY	0.00
AV QUEUE DELAY/DAY (VEH-H)	0.0
AV TOTAL DELAY/DAY (VEH-H)	0.0

----- SITE ACCIDENT DELAYS -----	
BREAKDOWN DURATION (MINS)	0
RANGE OF QUEUE DELAY - MIN (VEH-H) MAX	0
AV BREAKDOWNS PER DAY	0
AV QUEUE DELAY/DAY (VEH-H)	0
AV TOTAL DELAY/DAY (VEH-H)	0

AVERAGE ACCIDENT NUMBERS (PIA/DAY)	
MAIN ROUTE WITHOUT WORKS	0.0238
MAIN ROUTE WITH WORKS	0.0075
'DIVERSION'	0.0328
<small>PIA: Personal Injury Accidents</small>	
IMPACTS ON ROAD USERS	
ROAD USER COSTS PER DAY	\$279,764
CONGESTED HOURS PER DAY*	19

*Delays Exceeding User-Specified Maximum

**USH 45: CTH E TO STH 190 (MILWAUKEE COUNTY)
CONTINUOUS (24 HOUR) 2 LANE CLOSURE
NO DIVERSION ROUTE (MAX QUEUE METHOD)**

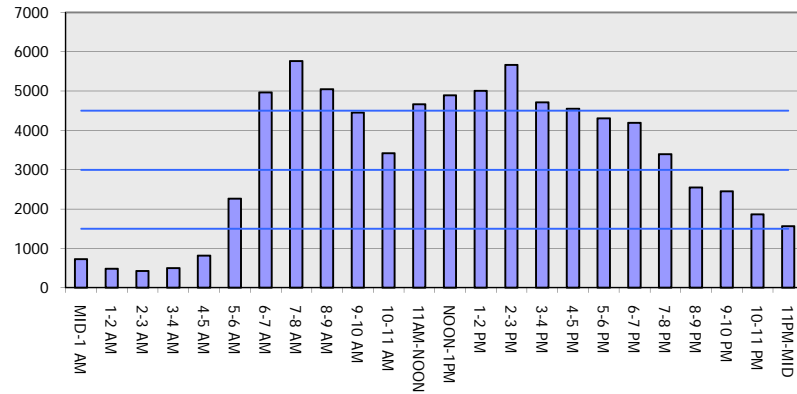
OCTOBER

Analyzed for 2009
Construction Season

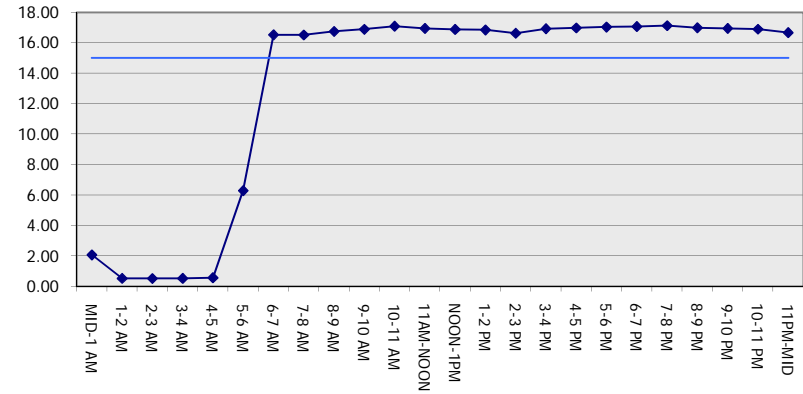
GRAPHICAL REPRESENTATION OF TRAFFIC MODEL INPUT AND OUTPUT

FRIDAY SOUTHBOUND DIRECTION

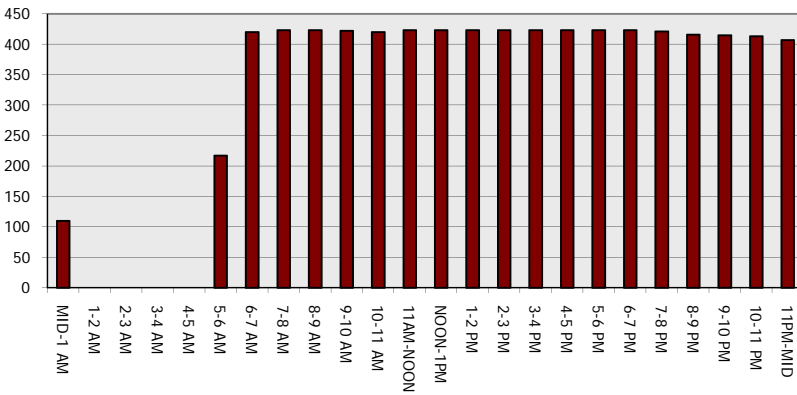
Main Route - Traffic Demand (Vehicles Per Hour)



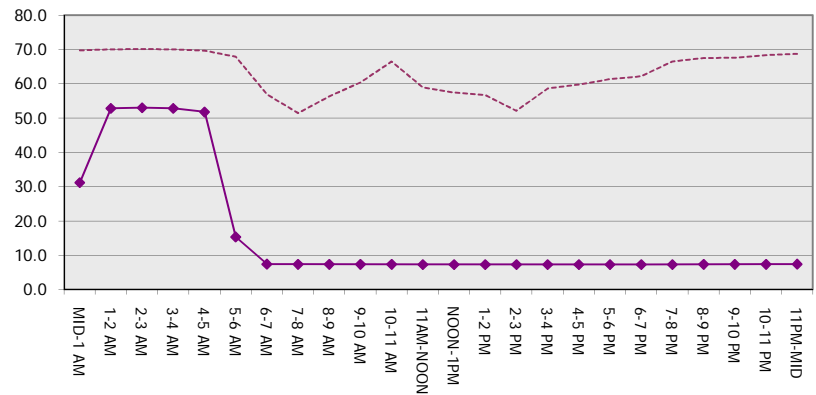
Main Route Average Delay Per Vehicle (Minutes)



Main Route - Average Queue Length (Vehicles)



Main Route - Average Speed (MPH)



USH 45: CTH E TO STH 190 (MILWAUKEE COUNTY) CONTINUOUS (24 HOUR) 2 LANE CLOSURE NO DIVERSION ROUTE (MAX QUEUE METHOD)	OCTOBER
	Analyzed for 2009 Construction Season

SUMMARY OF TRAFFIC MODEL OUTPUT

FRIDAY NORTHBOUND DIRECTION

TIME OF DAY	FLOWS AND CAPACITY IN VEH/HR							AVERAGE SPEEDS IN MPH			
	MAIN ROUTE		SITE CAPA CITY	FLOW		AV.DEL PER VEH (MINS)	AVERAGE QUEUE (VEH)	MAIN ROUTE		SITE	
	DEMAND FLOW	PCT HEAVY		MAIN ROUTE	'DIVER TED'			WITHOUT WORK ZONE	WITH WORK ZONE		
MID-1 AM	990	0.0	1499	990	0	4.83	203	69.5	18.4	36.5	
1-2 AM	761	0.0	1500	761	0	0.56	0	69.8	52.0	42.5	
2-3 AM	703	0.0	1500	703	0	0.55	0	69.9	52.2	42.7	
3-4 AM	746	0.0	1500	746	0	0.56	0	69.8	52.0	42.6	
4-5 AM	1308	0.0	1499	1308	0	1.16	13	69.1	40.6	36.2	
5-6 AM	3143	0.0	1500	1842	1301	14.39+	372	66.8	8.2	34.7	
6-7 AM	5283	0.0	1499	1500	3783	16.75+	423	54.8	7.3	30.8	
7-8 AM	6297	0.0	1499	1500	4797	16.38+	423	47.8	7.3	30.8	
8-9 AM	5138	0.0	1499	1500	3638	16.80+	423	55.8	7.3	30.8	
9-10 AM	4463	0.0	1499	1500	2963	16.99+	423	60.4	7.3	30.8	
10-11 AM	3620	0.0	1500	1500	2120	17.19+	423	66.1	7.3	30.8	
11AM-NOON	4865	0.0	1500	1500	3365	16.88+	423	57.6	7.3	30.8	
NOON-1PM	5199	0.0	1499	1500	3699	16.78+	423	55.3	7.3	30.8	
1-2 PM	5464	0.0	1499	1500	3964	16.69+	423	53.5	7.3	30.8	
2-3 PM	6088	0.0	1500	1500	4588	16.47+	423	49.2	7.3	30.8	
3-4 PM	5999	0.0	1499	1500	4499	16.50+	423	49.9	7.3	30.8	
4-5 PM	6494	0.0	1500	1500	4994	16.30+	423	46.5	7.3	30.8	
5-6 PM	6468	0.0	1499	1500	4968	16.31+	423	46.7	7.3	30.8	
6-7 PM	4330	0.0	1499	1500	2830	17.02+	423	61.3	7.3	30.8	
7-8 PM	3669	0.0	1499	1500	2169	17.18+	423	65.8	7.3	30.8	
8-9 PM	2919	0.0	1500	1515	1404	17.07+	419	67.1	7.3	30.8	
9-10 PM	2996	0.0	1500	1506	1489	17.12+	420	67.0	7.3	30.8	
10-11 PM	2349	0.0	1500	1500	849	16.92+	414	67.8	7.3	30.8	
11PM-MID	1881	0.0	1500	1500	381	16.91+	414	68.4	7.3	30.8	

+ INDICATES QUEUEING EXCEEDS USER-SPECIFIED MAXIMUM LIMIT

----- SITE BREAKDOWN DELAYS -----	
BREAKDOWN DURATION (MINS)	0
RANGE OF QUEUE DELAY - MIN (VEH-H) MAX	0.0
AV BREAKDOWNS PER DAY	0.00
AV QUEUE DELAY/DAY (VEH-H)	0.0
AV TOTAL DELAY/DAY (VEH-H)	0.0

----- SITE ACCIDENT DELAYS -----	
BREAKDOWN DURATION (MINS)	0
RANGE OF QUEUE DELAY - MIN (VEH-H) MAX	0
AV BREAKDOWNS PER DAY	0
AV QUEUE DELAY/DAY (VEH-H)	0
AV TOTAL DELAY/DAY (VEH-H)	0

AVERAGE ACCIDENT NUMBERS (PIA/DAY)	
MAIN ROUTE WITHOUT WORKS	0.0276
MAIN ROUTE WITH WORKS	0.0079
'DIVERSION'	0.0405

PIA: Personal Injury Accidents

ECONOMIC IMPACT ON ROAD USERS	
ROAD USER COSTS PER DAY	\$323,339
CONGESTED HOURS PER DAY*	19

*Delays Exceeding User-Specified Maximum

**USH 45: CTH E TO STH 190 (MILWAUKEE COUNTY)
CONTINUOUS (24 HOUR) 2 LANE CLOSURE
NO DIVERSION ROUTE (MAX QUEUE METHOD)**

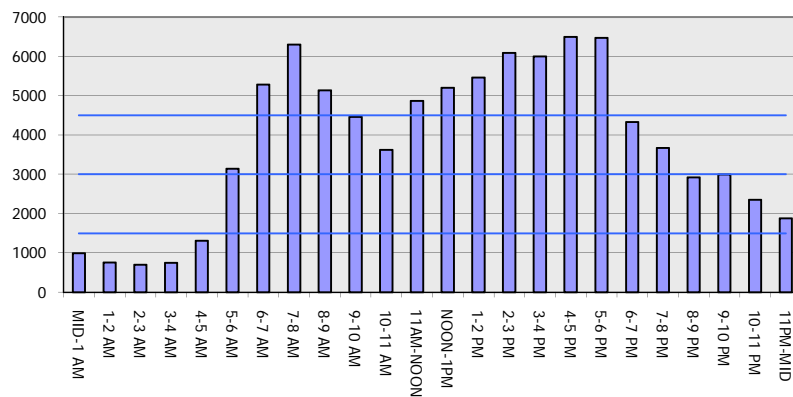
OCTOBER

Analyzed for 2009
Construction Season

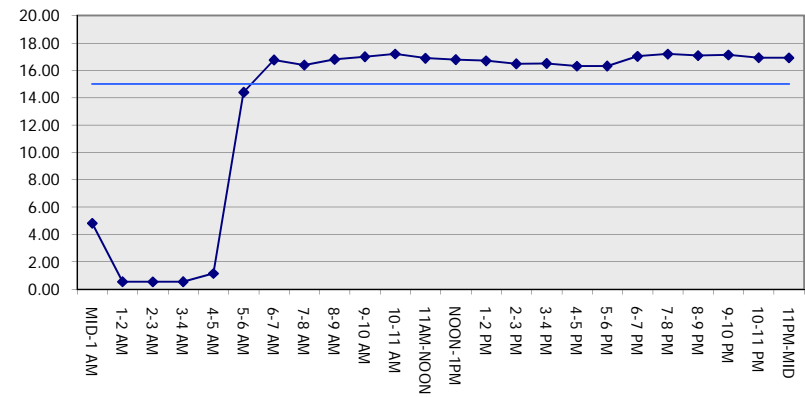
GRAPHICAL REPRESENTATION OF TRAFFIC MODEL INPUT AND OUTPUT

FRIDAY NORTHBOUND DIRECTION

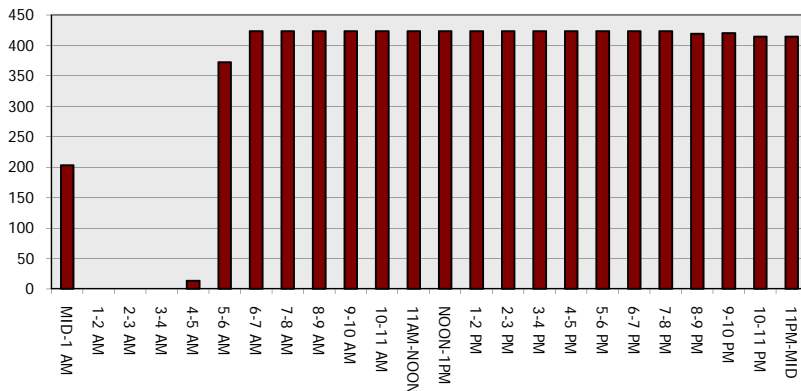
Main Route - Traffic Demand (Vehicles Per Hour)



Main Route Average Delay Per Vehicle (Minutes)



Main Route - Average Queue Length (Vehicles)



Main Route - Average Speed (MPH)

