

USH 45: CTH E TO STH 190 (MILWAUKEE COUNTY) CONTINUOUS (24 HOUR) CLOSURE NO DIVERSION ROUTE (MAX QUEUE METHOD)	OCTOBER
	Analyzed for 2009 Construction Season

SUMMARY OF TRAFFIC MODEL OUTPUT

FRIDAY SOUTHBOUND DIRECTION

TIME OF DAY	FLOWS AND CAPACITY IN VEH/HR						AVERAGE SPEEDS IN MPH			
	MAIN ROUTE		SITE CAPA CITY	FLOW		AV.DEL PER VEH (MINS)	AVERAGE QUEUE (VEH)	MAIN ROUTE		SITE
	DEMAND FLOW	PCT HEAVY		MAIN ROUTE	'DIVER TED'			WITHOUT WORK ZONE	WITH WORK ZONE	
MID-1 AM	728	0.0	3000	728	0	0.35	0	69.8	57.4	49.7
1-2 AM	482	0.0	3000	482	0	0.36	0	70.1	57.4	49.7
2-3 AM	423	0.0	3000	423	0	0.36	0	70.2	57.4	49.7
3-4 AM	495	0.0	3000	495	0	0.36	0	70.1	57.4	49.7
4-5 AM	814	0.0	3000	814	0	0.35	0	69.7	57.3	49.7
5-6 AM	2260	0.0	2999	2260	0	0.45	0	67.9	53.5	45.3
6-7 AM	4962	0.0	2999	3868	1093	11.29+	661	56.9	11.9	37.3
7-8 AM	5760	0.0	2999	3000	2759	17.36+	968	51.5	9.7	37.3
8-9 AM	5046	0.0	3000	3059	1988	17.56+	959	56.4	9.7	37.3
9-10 AM	4449	0.0	3000	2992	1457	17.53+	944	60.5	9.8	37.3
10-11 AM	3419	0.0	3000	2989	430	16.99+	897	66.5	10.0	37.3
11AM-NOON	4665	0.0	2999	3041	1624	17.61+	953	59.0	9.7	37.3
NOON-1PM	4892	0.0	3000	3000	1892	17.78+	968	57.4	9.7	37.3
1-2 PM	5002	0.0	3000	3000	2002	17.73+	968	56.7	9.7	37.3
2-3 PM	5664	0.0	3000	3000	2664	17.41+	968	52.2	9.7	37.3
3-4 PM	4713	0.0	3000	3011	1702	17.76+	963	58.7	9.7	37.3
4-5 PM	4548	0.0	3000	2990	1558	17.76+	959	59.8	9.7	37.3
5-6 PM	4309	0.0	3000	2972	1337	17.36+	931	61.4	9.9	37.3
6-7 PM	4192	0.0	3000	2987	1205	17.15+	917	62.2	9.9	37.3
7-8 PM	3397	0.0	3000	2994	403	16.99+	897	66.5	10.0	37.3
8-9 PM	2549	0.0	2999	2549	0	13.40+	707	67.6	11.0	37.3
9-10 PM	2447	0.0	3000	2447	0	2.83	204	67.7	26.3	42.7
10-11 PM	1861	0.0	3000	1861	0	0.34	0	68.4	56.9	49.7
11PM-MID	1559	0.0	3000	1559	0	0.34	0	68.8	57.0	49.7

+ INDICATES QUEUEING EXCEEDS USER-SPECIFIED MAXIMUM LIMIT

----- SITE BREAKDOWN DELAYS -----	
BREAKDOWN DURATION (MINS)	0
RANGE OF QUEUE DELAY - MIN (VEH-H) MAX	0.0
AV BREAKDOWNS PER DAY	0.00
AV QUEUE DELAY/DAY (VEH-H)	0.0
AV TOTAL DELAY/DAY (VEH-H)	0.0

----- SITE ACCIDENT DELAYS -----	
BREAKDOWN DURATION (MINS)	0
RANGE OF QUEUE DELAY - MIN (VEH-H) MAX	0
AV BREAKDOWNS PER DAY	0
AV QUEUE DELAY/DAY (VEH-H)	0
AV TOTAL DELAY/DAY (VEH-H)	0

AVERAGE ACCIDENT NUMBERS (PIA/DAY)	
MAIN ROUTE WITHOUT WORKS	0.0238
MAIN ROUTE WITH WORKS	0.0134
'DIVERSION'	0.0155
<small>PIA: Personal Injury Accidents</small>	
IMPACTS ON ROAD USERS	
ROAD USER COSTS PER DAY	\$258,096
CONGESTED HOURS PER DAY*	15

*Delays Exceeding User-Specified Maximum

**USH 45: CTH E TO STH 190 (MILWAUKEE COUNTY)
CONTINUOUS (24 HOUR) CLOSURE
NO DIVERSION ROUTE (MAX QUEUE METHOD)**

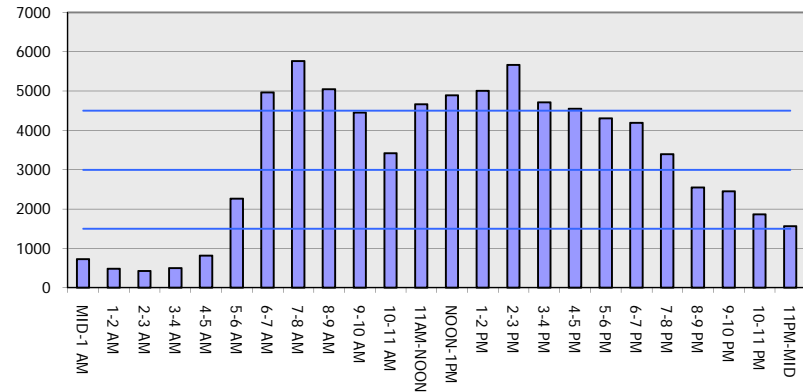
OCTOBER

Analyzed for 2009
Construction Season

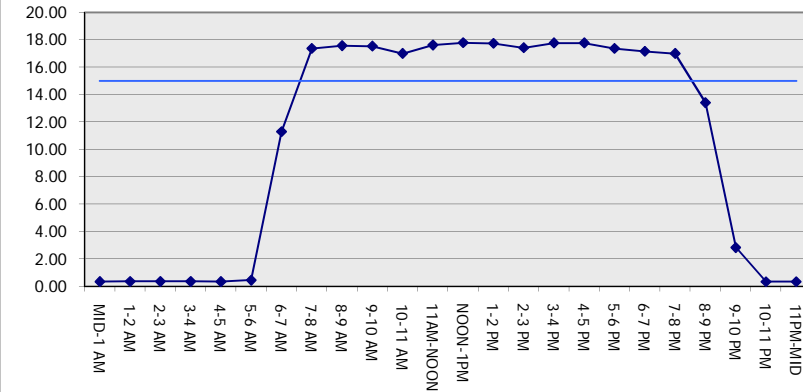
GRAPHICAL REPRESENTATION OF TRAFFIC MODEL INPUT AND OUTPUT

FRIDAY SOUTHBOUND DIRECTION

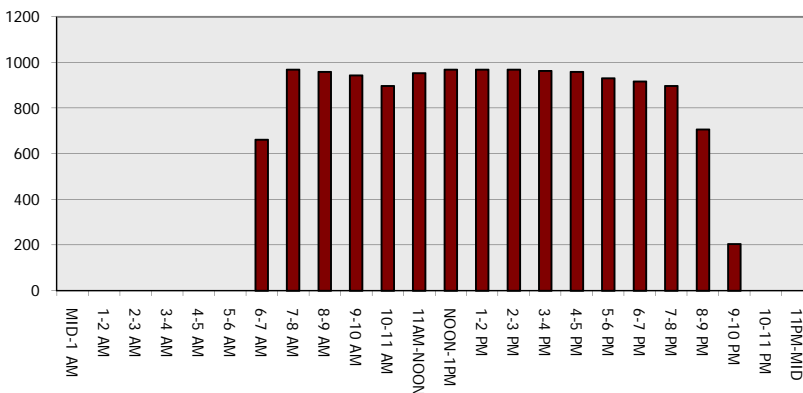
Main Route - Traffic Demand (Vehicles Per Hour)



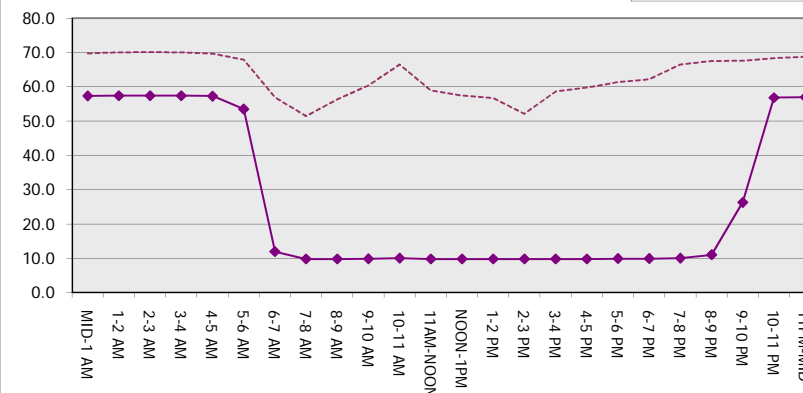
Main Route Average Delay Per Vehicle (Minutes)



Main Route - Average Queue Length (Vehicles)



Main Route - Average Speed (MPH)



USH 45: CTH E TO STH 190 (MILWAUKEE COUNTY) CONTINUOUS (24 HOUR) CLOSURE NO DIVERSION ROUTE (MAX QUEUE METHOD)	OCTOBER
	Analyzed for 2009 Construction Season

SUMMARY OF TRAFFIC MODEL OUTPUT

FRIDAY NORTHBOUND DIRECTION

TIME OF DAY	FLOWS AND CAPACITY IN VEH/HR							AVERAGE SPEEDS IN MPH			
	MAIN ROUTE		SITE CAPA CITY	FLOW		AV.DEL PER VEH (MINS)	AVERAGE QUEUE (VEH)	MAIN ROUTE		SITE	
	DEMAND FLOW	PCT HEAVY		MAIN ROUTE	'DIVER TED'			WITHOUT WORK ZONE	WITH WORK ZONE		
MID-1 AM	990	0.0	3000	990	0	0.35	0	69.5	57.3	49.7	
1-2 AM	761	0.0	3000	761	0	0.35	0	69.8	57.3	49.7	
2-3 AM	703	0.0	3000	703	0	0.36	0	69.9	57.4	49.7	
3-4 AM	746	0.0	3000	746	0	0.35	0	69.8	57.4	49.7	
4-5 AM	1308	0.0	3000	1308	0	0.35	0	69.1	57.1	49.7	
5-6 AM	3143	0.0	2999	3143	0	1.40	79	66.8	36.8	40.4	
6-7 AM	5283	0.0	3000	3563	1720	15.40+	865	54.8	10.3	38.2	
7-8 AM	6297	0.0	2999	3000	3297	17.05+	968	47.8	9.7	37.3	
8-9 AM	5138	0.0	2999	3041	2097	17.56+	962	55.8	9.7	37.3	
9-10 AM	4463	0.0	3000	2999	1463	17.54+	944	60.4	9.8	37.3	
10-11 AM	3620	0.0	3000	2988	632	17.01+	899	66.1	9.9	37.3	
11AM-NOON	4865	0.0	2999	3047	1818	17.66+	961	57.6	9.7	37.3	
NOON-1PM	5199	0.0	3000	3000	2198	17.64+	968	55.3	9.7	37.3	
1-2 PM	5464	0.0	3000	3000	2464	17.51+	968	53.5	9.7	37.3	
2-3 PM	6088	0.0	3000	3000	3088	17.18+	968	49.2	9.7	37.3	
3-4 PM	5999	0.0	3000	3000	2999	17.23+	968	49.9	9.7	37.3	
4-5 PM	6494	0.0	3000	3000	3494	16.93+	968	46.5	9.7	37.3	
5-6 PM	6468	0.0	3000	3000	3468	16.94+	968	46.7	9.7	37.3	
6-7 PM	4330	0.0	3000	2964	1366	17.50+	940	61.3	9.8	37.3	
7-8 PM	3669	0.0	2999	2989	680	17.00+	899	65.8	9.9	37.3	
8-9 PM	2919	0.0	2999	2885	34	16.38+	862	67.1	10.1	37.3	
9-10 PM	2996	0.0	3000	2996	0	15.46+	811	67.0	10.3	37.3	
10-11 PM	2349	0.0	2999	2349	0	9.01	500	67.8	13.4	40.3	
11PM-MID	1881	0.0	3000	1881	0	0.45	10	68.4	53.8	49.7	

+ INDICATES QUEUEING EXCEEDS USER-SPECIFIED MAXIMUM LIMIT

BREAKDOWN DURATION (MINS)	0
RANGE OF QUEUE DELAY - MIN (VEH-H) MAX	0.0
AV BREAKDOWNS PER DAY	0.00
AV QUEUE DELAY/DAY (VEH-H)	0.0
AV TOTAL DELAY/DAY (VEH-H)	0.0

BREAKDOWN DURATION (MINS)	0
RANGE OF QUEUE DELAY - MIN (VEH-H) MAX	0
AV BREAKDOWNS PER DAY	0
AV QUEUE DELAY/DAY (VEH-H)	0
AV TOTAL DELAY/DAY (VEH-H)	0

MAIN ROUTE WITHOUT WORKS	0.0276
MAIN ROUTE WITH WORKS	0.0143
'DIVERSION'	0.0216

PIA: Personal Injury Accidents

ROAD USER COSTS PER DAY	\$309,594
CONGESTED HOURS PER DAY*	16

*Delays Exceeding User-Specified Maximum

**USH 45: CTH E TO STH 190 (MILWAUKEE COUNTY)
CONTINUOUS (24 HOUR) CLOSURE
NO DIVERSION ROUTE (MAX QUEUE METHOD)**

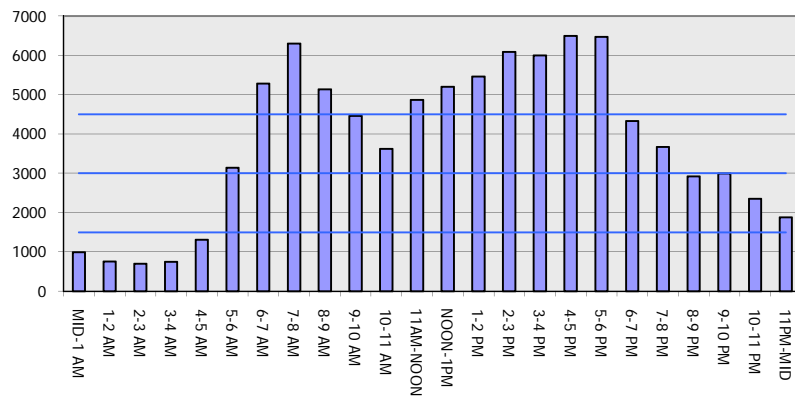
OCTOBER

Analyzed for 2009
Construction Season

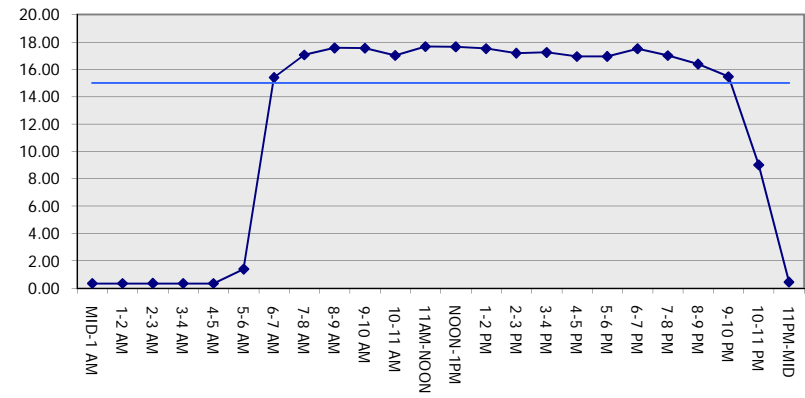
GRAPHICAL REPRESENTATION OF TRAFFIC MODEL INPUT AND OUTPUT

FRIDAY NORTHBOUND DIRECTION

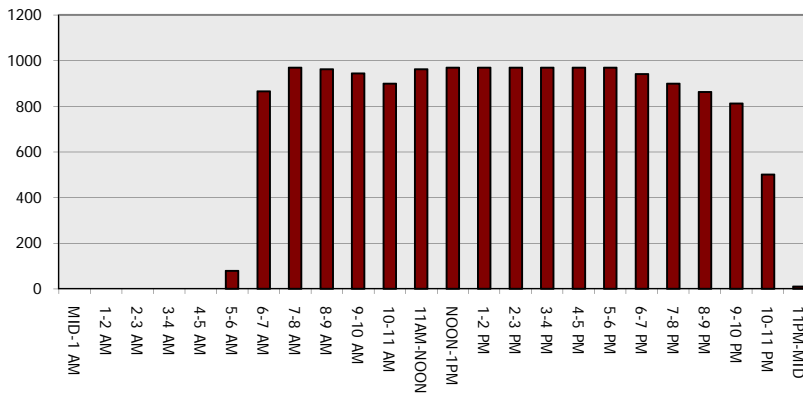
Main Route - Traffic Demand (Vehicles Per Hour)



Main Route Average Delay Per Vehicle (Minutes)



Main Route - Average Queue Length (Vehicles)



Main Route - Average Speed (MPH)

