

USH 45: CTH E TO STH 190 (MILWAUKEE COUNTY) CONTINUOUS (24 HOUR) CLOSURE NO DIVERSION ROUTE (MAX QUEUE METHOD)	AUGUST
	Analyzed for 2009 Construction Season

SUMMARY OF TRAFFIC MODEL OUTPUT

SUNDAY SOUTHBOUND DIRECTION

TIME OF DAY	FLOWS AND CAPACITY IN VEH/HR						AVERAGE SPEEDS IN MPH			
	MAIN ROUTE		SITE CAPA CITY	FLOW		AV.DEL PER VEH (MINS)	AVERAGE QUEUE (VEH)	MAIN ROUTE		SITE
	DEMAND FLOW	PCT HEAVY		MAIN ROUTE	'DIVER TED'			WITHOUT WORK ZONE	WITH WORK ZONE	
MID-1 AM	871	0.0	3000	871	0	0.35	0	69.7	57.3	49.7
1-2 AM	483	0.0	3000	483	0	0.36	0	70.1	57.4	49.7
2-3 AM	450	0.0	3000	450	0	0.36	0	70.2	57.4	49.7
3-4 AM	268	0.0	3000	268	0	0.36	0	70.2	57.4	49.7
4-5 AM	310	0.0	3000	310	0	0.36	0	70.2	57.4	49.7
5-6 AM	459	0.0	3000	459	0	0.36	0	70.2	57.4	49.7
6-7 AM	969	0.0	3000	969	0	0.35	0	69.6	57.3	49.7
7-8 AM	1286	0.0	3000	1286	0	0.35	0	69.1	57.1	49.7
8-9 AM	1682	0.0	3000	1682	0	0.34	0	68.6	57.0	49.7
9-10 AM	2567	0.0	2999	2567	0	0.45	0	67.6	53.3	45.3
10-11 AM	3395	0.0	2999	3395	0	2.97	157	66.5	24.8	37.3
11AM-NOON	3845	0.0	3000	3490	355	13.80+	745	64.6	10.9	37.3
NOON-1PM	4304	0.0	3000	3047	1257	17.19+	922	61.5	9.9	37.3
1-2 PM	4135	0.0	3000	2977	1158	17.04+	910	62.6	9.9	37.3
2-3 PM	4389	0.0	2999	3029	1361	17.38+	934	60.9	9.8	37.3
3-4 PM	4146	0.0	3000	2967	1179	17.08+	913	62.5	9.9	37.3
4-5 PM	4103	0.0	2999	3008	1096	17.02+	908	62.8	9.9	37.3
5-6 PM	3281	0.0	3000	2992	289	16.97+	895	66.6	10.0	37.3
6-7 PM	3451	0.0	2999	2997	454	16.99+	897	66.4	9.9	37.3
7-8 PM	3016	0.0	3000	2955	61	16.80+	885	67.0	10.0	37.3
8-9 PM	2632	0.0	2999	2632	0	13.47+	707	67.4	10.9	37.3
9-10 PM	1867	0.0	3000	1867	0	1.33	121	68.4	38.6	49.2
10-11 PM	1440	0.0	3000	1440	0	0.34	0	68.9	57.1	49.7
11PM-MID	834	0.0	3000	834	0	0.35	0	69.7	57.3	49.7

+ INDICATES QUEUEING EXCEEDS USER-SPECIFIED MAXIMUM LIMIT

----- SITE BREAKDOWN DELAYS -----	
BREAKDOWN DURATION (MINS)	0
RANGE OF QUEUE DELAY - MIN (VEH-H) MAX	0.0
AV BREAKDOWNS PER DAY	0.00
AV QUEUE DELAY/DAY (VEH-H)	0.0
AV TOTAL DELAY/DAY (VEH-H)	0.0

----- SITE ACCIDENT DELAYS -----	
BREAKDOWN DURATION (MINS)	0
RANGE OF QUEUE DELAY - MIN (VEH-H) MAX	0
AV BREAKDOWNS PER DAY	0
AV QUEUE DELAY/DAY (VEH-H)	0
AV TOTAL DELAY/DAY (VEH-H)	0

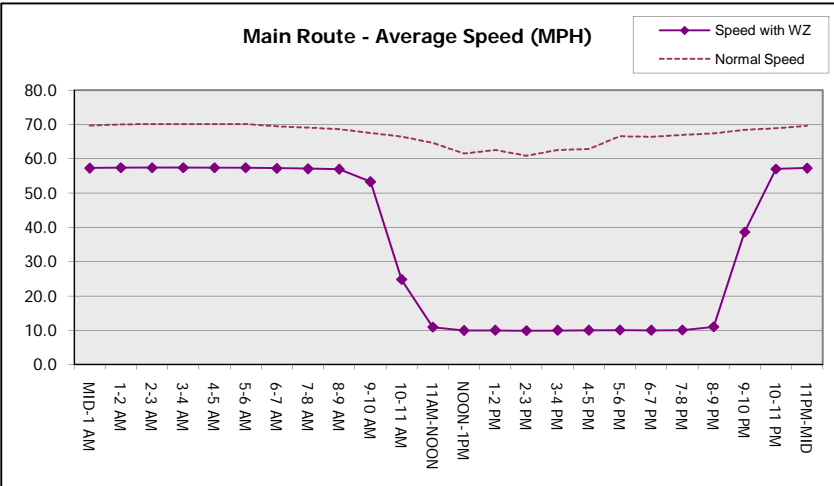
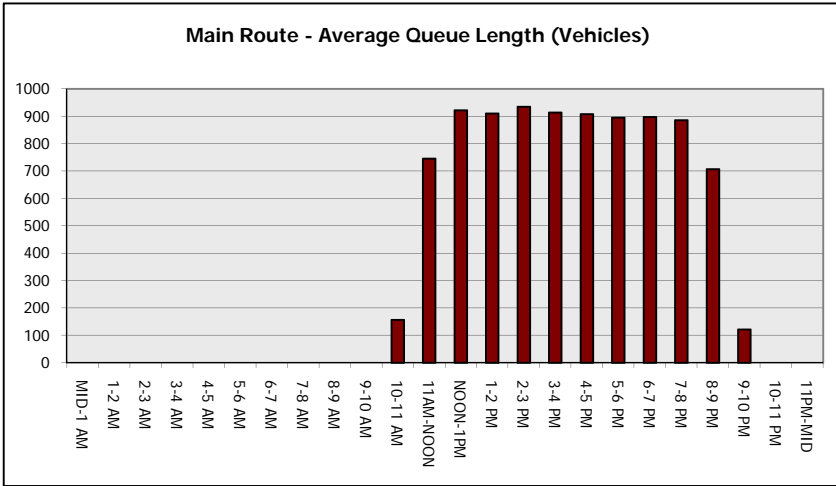
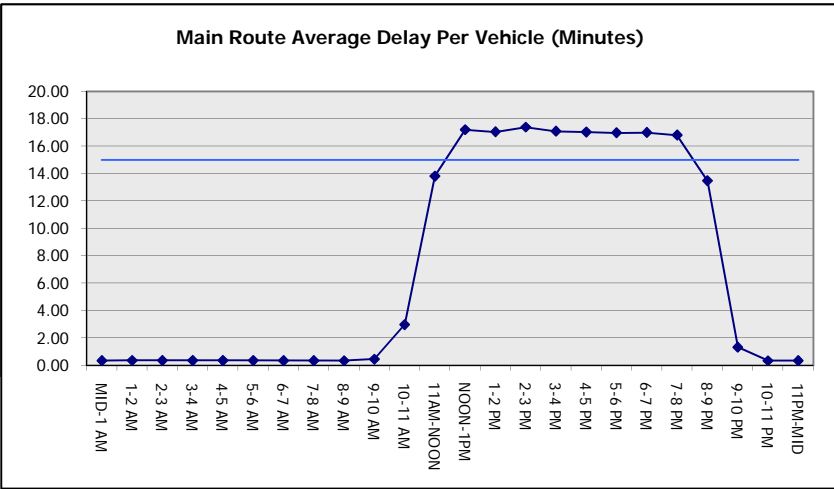
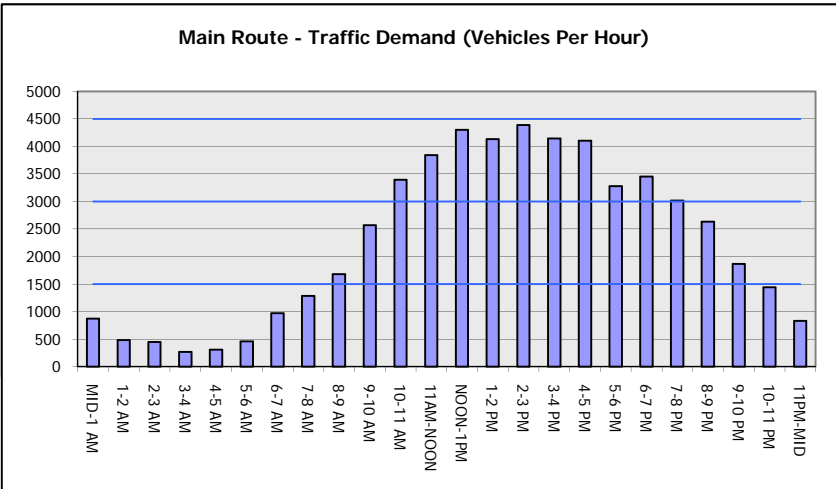
AVERAGE ACCIDENT NUMBERS (PIA/DAY)	
MAIN ROUTE WITHOUT WORKS	0.0164
MAIN ROUTE WITH WORKS	0.0111
'DIVERSION'	0.0051
PIA: Personal Injury Accidents	
IMPACTS ON ROAD USERS	
ROAD USER COSTS PER DAY	\$177,939
CONGESTED HOURS PER DAY*	10

*Delays Exceeding User-Specified Maximum

**USH 45: CTH E TO STH 190 (MILWAUKEE COUNTY)
CONTINUOUS (24 HOUR) CLOSURE
NO DIVERSION ROUTE (MAX QUEUE METHOD)**

AUGUST
Analyzed for 2009
Construction Season

GRAPHICAL REPRESENTATION OF TRAFFIC MODEL INPUT AND OUTPUT
SUNDAY SOUTHBOUND DIRECTION



USH 45: CTH E TO STH 190 (MILWAUKEE COUNTY) CONTINUOUS (24 HOUR) CLOSURE NO DIVERSION ROUTE (MAX QUEUE METHOD)	AUGUST
	Analyzed for 2009 Construction Season

SUMMARY OF TRAFFIC MODEL OUTPUT

SUNDAY NORTHBOUND DIRECTION

TIME OF DAY	FLOWS AND CAPACITY IN VEH/HR							AVERAGE SPEEDS IN MPH		
	MAIN ROUTE		SITE CAPA CITY	FLOW		AV.DEL PER VEH (MINS)	AVERAGE QUEUE (VEH)	MAIN ROUTE		SITE
	DEMAND FLOW	PCT HEAVY		MAIN ROUTE	'DIVER TED'			WITHOUT WORK ZONE	WITH WORK ZONE	
MID-1 AM	1511	0.0	3000	1511	0	0.34	0	68.9	57.1	49.7
1-2 AM	957	0.0	3000	957	0	0.35	0	69.6	57.3	49.7
2-3 AM	830	0.0	3000	830	0	0.35	0	69.7	57.3	49.7
3-4 AM	579	0.0	3000	579	0	0.36	0	70.0	57.4	49.7
4-5 AM	487	0.0	3000	487	0	0.36	0	70.1	57.4	49.7
5-6 AM	699	0.0	3000	699	0	0.36	0	69.9	57.4	49.7
6-7 AM	885	0.0	3000	885	0	0.35	0	69.6	57.3	49.7
7-8 AM	1253	0.0	3000	1253	0	0.35	0	69.2	57.1	49.7
8-9 AM	1615	0.0	3000	1615	0	0.34	0	68.7	57.0	49.7
9-10 AM	2400	0.0	3000	2400	0	0.34	0	67.8	56.4	49.4
10-11 AM	2744	0.0	2999	2744	0	0.56	0	67.3	50.6	41.7
11AM-NOON	3285	0.0	2999	3285	0	2.37	112	66.6	27.9	37.3
NOON-1PM	3708	0.0	3000	3708	0	11.54+	626	65.5	11.8	37.3
1-2 PM	3683	0.0	2999	2941	742	17.05+	902	65.7	9.9	37.3
2-3 PM	3655	0.0	2999	2983	673	17.01+	899	65.9	9.9	37.3
3-4 PM	4056	0.0	2999	2991	1065	16.96+	904	63.2	9.9	37.3
4-5 PM	3782	0.0	3000	2997	786	16.99+	900	65.0	9.9	37.3
5-6 PM	3597	0.0	3000	2997	599	17.01+	899	66.3	9.9	37.3
6-7 PM	3616	0.0	2999	2999	618	17.01+	899	66.1	9.9	37.3
7-8 PM	2961	0.0	3000	2913	47	16.60+	875	67.1	10.1	37.3
8-9 PM	2570	0.0	2999	2570	0	11.90+	625	67.6	11.6	37.3
9-10 PM	2110	0.0	3000	2110	0	1.22	94	68.1	39.7	47.9
10-11 PM	1681	0.0	3000	1681	0	0.34	0	68.6	57.0	49.7
11PM-MID	1101	0.0	3000	1101	0	0.35	0	69.4	57.2	49.7

+ INDICATES QUEUEING EXCEEDS USER-SPECIFIED MAXIMUM LIMIT

----- SITE BREAKDOWN DELAYS -----	
BREAKDOWN DURATION (MINS)	0
RANGE OF QUEUE DELAY - MIN (VEH-H) MAX	0.0
AV BREAKDOWNS PER DAY	0.00
AV QUEUE DELAY/DAY (VEH-H)	0.0
AV TOTAL DELAY/DAY (VEH-H)	0.0

----- SITE ACCIDENT DELAYS -----	
BREAKDOWN DURATION (MINS)	0
RANGE OF QUEUE DELAY - MIN (VEH-H) MAX	0
AV BREAKDOWNS PER DAY	0
AV QUEUE DELAY/DAY (VEH-H)	0
AV TOTAL DELAY/DAY (VEH-H)	0

AVERAGE ACCIDENT NUMBERS (PIA/DAY)	
MAIN ROUTE WITHOUT WORKS	0.0163
MAIN ROUTE WITH WORKS	0.0116
'DIVERSION'	0.0032

PIA: Personal Injury Accidents

ECONOMIC IMPACT ON ROAD USERS	
ROAD USER COSTS PER DAY	\$146,457
CONGESTED HOURS PER DAY*	9

*Delays Exceeding User-Specified Maximum

**USH 45: CTH E TO STH 190 (MILWAUKEE COUNTY)
 CONTINUOUS (24 HOUR) CLOSURE
 NO DIVERSION ROUTE (MAX QUEUE METHOD)**

AUGUST

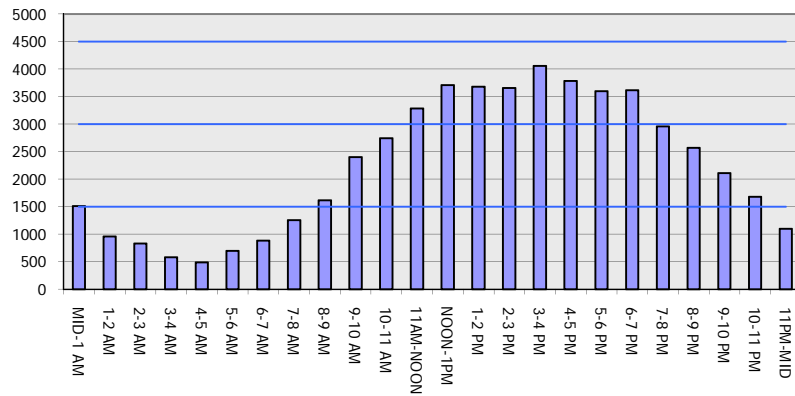
Analyzed for 2009
 Construction Season

GRAPHICAL REPRESENTATION OF TRAFFIC MODEL INPUT AND OUTPUT

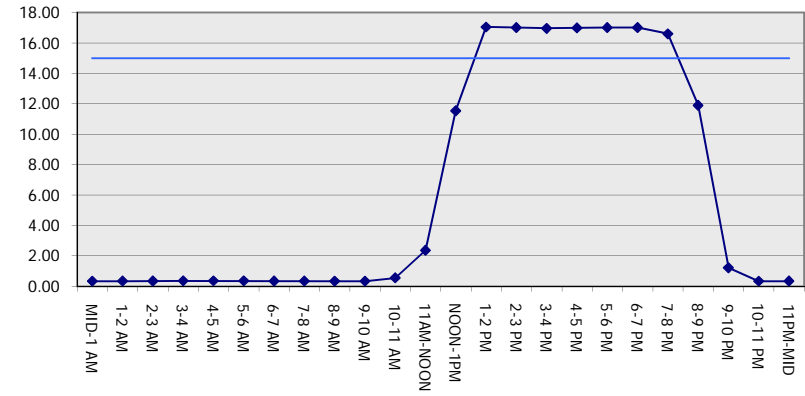
SUNDAY

NORTHBOUND DIRECTION

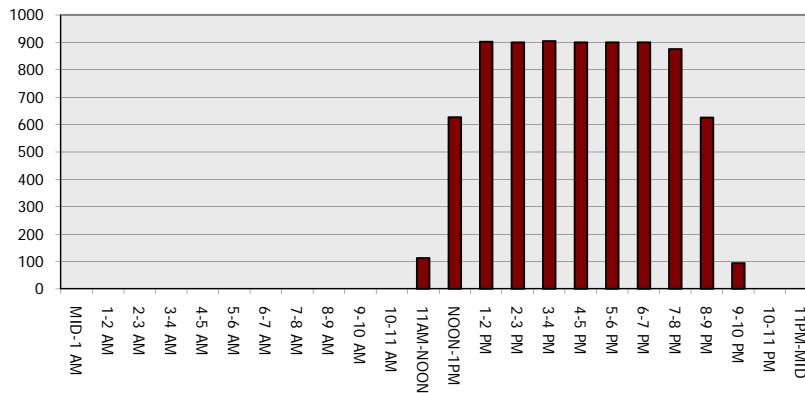
Main Route - Traffic Demand (Vehicles Per Hour)



Main Route Average Delay Per Vehicle (Minutes)



Main Route - Average Queue Length (Vehicles)



Main Route - Average Speed (MPH)

