

**USH 45: CTH E TO STH 190 (MILWAUKEE COUNTY)
CONTINUOUS (24 HOUR) 2 LANE CLOSURE
NO DIVERSION ROUTE (MAX QUEUE METHOD)**

AUGUST

Analyzed for 2009
Construction Season

SUMMARY OF TRAFFIC MODEL OUTPUT

SATURDAY SOUTHBOUND DIRECTION

TIME OF DAY	FLOWS AND CAPACITY IN VEH/HR						AVERAGE SPEEDS IN MPH			
	MAIN ROUTE		SITE CAPA CITY	FLOW		AV.DEL PER VEH (MINS)	AVERAGE QUEUE (VEH)	MAIN ROUTE		SITE
	DEMAND FLOW	PCT HEAVY		MAIN ROUTE	'DIVER TED'			WITHOUT WORK ZONE	WITH WORK ZONE	
MID-1 AM	879	0.0	1499	879	0	2.34	114	69.6	28.9	39.3
1-2 AM	510	0.0	1500	510	0	0.53	0	70.1	52.8	43.5
2-3 AM	459	0.0	1500	459	0	0.53	0	70.2	53.0	43.7
3-4 AM	377	0.0	1500	377	0	0.52	0	70.2	53.2	44.0
4-5 AM	467	0.0	1500	467	0	0.53	0	70.2	52.9	43.7
5-6 AM	935	0.0	1499	935	0	0.58	0	69.6	51.4	41.9
6-7 AM	1622	0.0	1499	1622	0	1.95	35	68.7	31.5	31.2
7-8 AM	2205	0.0	1500	1785	420	13.89+	348	68.0	8.3	30.8
8-9 AM	2701	0.0	1499	1497	1204	16.98+	417	67.4	7.3	30.8
9-10 AM	3404	0.0	1499	1500	1904	17.20+	423	66.5	7.3	30.8
10-11 AM	4095	0.0	1500	1500	2595	17.08+	423	62.9	7.3	30.8
11AM-NOON	4560	0.0	1500	1500	3060	16.96+	423	59.7	7.3	30.8
NOON-1PM	4846	0.0	1500	1500	3346	16.88+	423	57.8	7.3	30.8
1-2 PM	4488	0.0	1500	1500	2988	16.98+	423	60.2	7.3	30.8
2-3 PM	4525	0.0	1500	1500	3025	16.97+	423	59.9	7.3	30.8
3-4 PM	4527	0.0	1500	1500	3027	16.97+	423	59.9	7.3	30.8
4-5 PM	4309	0.0	1500	1500	2809	17.03+	423	61.4	7.3	30.8
5-6 PM	3950	0.0	1500	1500	2450	17.12+	423	63.9	7.3	30.8
6-7 PM	3310	0.0	1500	1500	1810	17.21+	423	66.6	7.3	30.8
7-8 PM	2747	0.0	1500	1497	1250	16.99+	417	67.3	7.3	30.8
8-9 PM	2379	0.0	1500	1500	879	16.92+	415	67.8	7.3	30.8
9-10 PM	2081	0.0	1500	1500	582	16.91+	414	68.1	7.3	30.8
10-11 PM	1870	0.0	1499	1500	371	16.91+	414	68.4	7.3	30.8
11PM-MID	1473	0.0	1500	1424	49	16.25+	397	68.9	7.5	30.8

+ INDICATES QUEUEING EXCEEDS USER-SPECIFIED MAXIMUM LIMIT

----- SITE BREAKDOWN DELAYS -----	
BREAKDOWN DURATION (MINS)	0
RANGE OF QUEUE DELAY - MIN (VEH-H) MAX	0.0
AV BREAKDOWNS PER DAY	0.00
AV QUEUE DELAY/DAY (VEH-H)	0.0
AV TOTAL DELAY/DAY (VEH-H)	0.0

----- SITE ACCIDENT DELAYS -----	
BREAKDOWN DURATION (MINS)	0
RANGE OF QUEUE DELAY - MIN (VEH-H) MAX	0
AV BREAKDOWNS PER DAY	0
AV QUEUE DELAY/DAY (VEH-H)	0
AV TOTAL DELAY/DAY (VEH-H)	0

AVERAGE ACCIDENT NUMBERS (PIA/DAY)	
MAIN ROUTE WITHOUT WORKS	0.0190
MAIN ROUTE WITH WORKS	0.0073
'DIVERSION'	0.0223
PIA: Personal Injury Accidents	
IMPACTS ON ROAD USERS	
ROAD USER COSTS PER DAY	\$265,992
CONGESTED HOURS PER DAY*	17

*Delays Exceeding User-Specified Maximum

**USH 45: CTH E TO STH 190 (MILWAUKEE COUNTY)
CONTINUOUS (24 HOUR) 2 LANE CLOSURE
NO DIVERSION ROUTE (MAX QUEUE METHOD)**

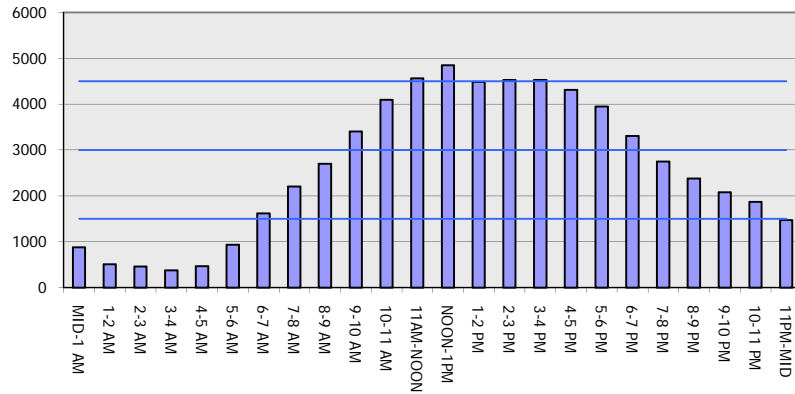
AUGUST

Analyzed for 2009
Construction Season

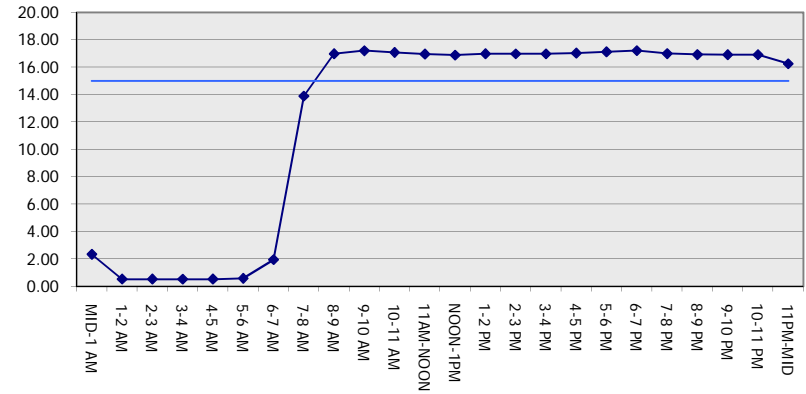
GRAPHICAL REPRESENTATION OF TRAFFIC MODEL INPUT AND OUTPUT

SATURDAY SOUTHBOUND DIRECTION

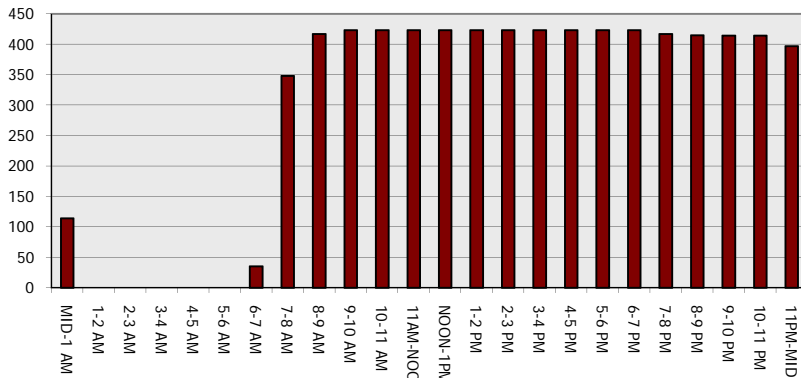
Main Route - Traffic Demand (Vehicles Per Hour)



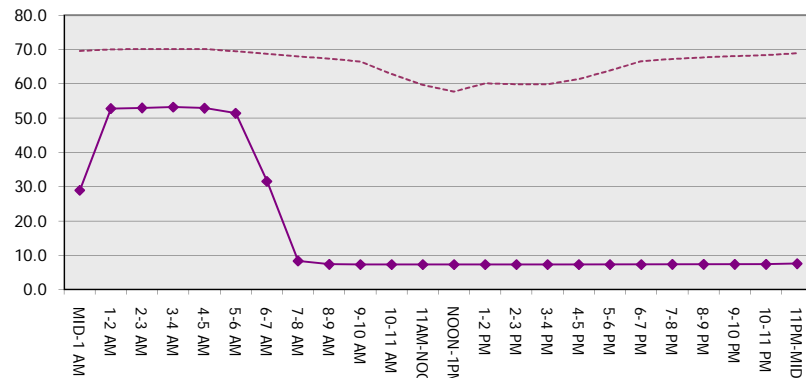
Main Route Average Delay Per Vehicle (Minutes)



Main Route - Average Queue Length (Vehicles)



Main Route - Average Speed (MPH)



USH 45: CTH E TO STH 190 (MILWAUKEE COUNTY) CONTINUOUS (24 HOUR) 2 LANE CLOSURE NO DIVERSION ROUTE (MAX QUEUE METHOD)	AUGUST
	Analyzed for 2009 Construction Season

SUMMARY OF TRAFFIC MODEL OUTPUT

SATURDAY NORTHBOUND DIRECTION

TIME OF DAY	FLOWS AND CAPACITY IN VEH/HR						AVERAGE SPEEDS IN MPH			
	MAIN ROUTE		SITE CAPA CITY	FLOW		AV.DEL PER VEH (MINS)	AVERAGE QUEUE (VEH)	MAIN ROUTE		SITE
	DEMAND FLOW	PCT HEAVY		MAIN ROUTE	'DIVER TED'			WITHOUT WORK ZONE	WITH WORK ZONE	
MID-1 AM	1388	0.0	1500	1370	17	15.66+	383	69.0	7.7	30.8
1-2 AM	924	0.0	1499	924	0	1.89	81	69.6	32.4	40.0
2-3 AM	843	0.0	1500	843	0	0.57	0	69.7	51.7	42.2
3-4 AM	639	0.0	1500	639	0	0.55	0	69.9	52.4	43.0
4-5 AM	853	0.0	1500	853	0	0.57	0	69.7	51.7	42.2
5-6 AM	1292	0.0	1499	1292	0	0.81	0	69.1	46.3	36.1
6-7 AM	1945	0.0	1499	1945	0	6.23	182	68.3	15.0	30.8
7-8 AM	2575	0.0	1499	1490	1084	16.96+	416	67.6	7.3	30.8
8-9 AM	3044	0.0	1499	1493	1551	17.15+	421	66.9	7.3	30.8
9-10 AM	3432	0.0	1499	1500	1932	17.20+	423	66.4	7.3	30.8
10-11 AM	3797	0.0	1500	1500	2297	17.15+	423	64.9	7.3	30.8
11AM-NOON	4257	0.0	1500	1500	2757	17.04+	423	61.8	7.3	30.8
NOON-1PM	4508	0.0	1500	1500	3008	16.98+	423	60.1	7.3	30.8
1-2 PM	4458	0.0	1500	1500	2958	16.99+	423	60.4	7.3	30.8
2-3 PM	4524	0.0	1500	1500	3024	16.97+	423	59.9	7.3	30.8
3-4 PM	4507	0.0	1500	1500	3007	16.98+	423	60.1	7.3	30.8
4-5 PM	4104	0.0	1500	1500	2604	17.08+	423	62.8	7.3	30.8
5-6 PM	3828	0.0	1500	1500	2328	17.15+	423	64.7	7.3	30.8
6-7 PM	3234	0.0	1500	1498	1736	17.20+	423	66.7	7.3	30.8
7-8 PM	2802	0.0	1500	1495	1307	17.02+	418	67.3	7.3	30.8
8-9 PM	2800	0.0	1499	1498	1302	17.02+	418	67.3	7.3	30.8
9-10 PM	2904	0.0	1499	1500	1404	17.07+	419	67.1	7.3	30.8
10-11 PM	2605	0.0	1500	1499	1107	16.94+	415	67.5	7.3	30.8
11PM-MID	2091	0.0	1500	1500	591	16.91+	414	68.1	7.3	30.8

+ INDICATES QUEUEING EXCEEDS USER-SPECIFIED MAXIMUM LIMIT

BREAKDOWN DURATION (MINS)	0
RANGE OF QUEUE DELAY - MIN (VEH-H) MAX	0.0
AV BREAKDOWNS PER DAY	0.00
AV QUEUE DELAY/DAY (VEH-H)	0.0
AV TOTAL DELAY/DAY (VEH-H)	0.0

BREAKDOWN DURATION (MINS)	0
RANGE OF QUEUE DELAY - MIN (VEH-H) MAX	0
AV BREAKDOWNS PER DAY	0
AV QUEUE DELAY/DAY (VEH-H)	0
AV TOTAL DELAY/DAY (VEH-H)	0

MAIN ROUTE WITHOUT WORKS	0.0204
MAIN ROUTE WITH WORKS	0.0079
'DIVERSION'	0.0238

PIA: Personal Injury Accidents

ROAD USER COSTS PER DAY	\$286,587
CONGESTED HOURS PER DAY*	18

*Delays Exceeding User-Specified Maximum

**USH 45: CTH E TO STH 190 (MILWAUKEE COUNTY)
CONTINUOUS (24 HOUR) 2 LANE CLOSURE
NO DIVERSION ROUTE (MAX QUEUE METHOD)**

AUGUST
Analyzed for 2009
Construction Season

GRAPHICAL REPRESENTATION OF TRAFFIC MODEL INPUT AND OUTPUT
SATURDAY NORTHBOUND DIRECTION

