

**IH 94: USH 41 TO IH 43 (MILWAUKEE COUNTY)
CONTINUOUS (24 HOUR) 2 LANE CLOSURE
NO DIVERSION ROUTE (MAX QUEUE METHOD)**

OCTOBER
Analyzed for 2009
Construction Season

SUMMARY OF TRAFFIC MODEL OUTPUT
SUNDAY WESTBOUND DIRECTION

TIME OF DAY	FLOWS AND CAPACITY IN VEH/HR						AVERAGE SPEEDS IN MPH				
	MAIN ROUTE		SITE CAPA CITY	FLOW		AV.DEL PER VEH (MINS)	AVERAGE QUEUE (VEH)	MAIN ROUTE		SITE	
	DEMAND FLOW	PCT HEAVY		MAIN ROUTE	'DIVER TED'			WITHOUT WORK ZONE	WITH WORK ZONE		
MID-1 AM	1737	0.0	1499	1737	0	4.41	106	68.6	20.2	30.8	
1-2 AM	1261	0.0	1499	1261	0	4.87	125	69.2	18.8	32.6	
2-3 AM	1486	0.0	1499	1486	0	1.54	13	68.9	37.4	31.5	
3-4 AM	644	0.0	1500	644	0	0.55	0	69.9	53.6	43.0	
4-5 AM	420	0.0	1500	420	0	0.52	0	70.2	54.3	43.8	
5-6 AM	435	0.0	1500	435	0	0.53	0	70.2	54.3	43.8	
6-7 AM	807	0.0	1500	807	0	0.57	0	69.7	53.1	42.4	
7-8 AM	1085	0.0	1499	1085	0	0.63	0	69.4	51.6	40.6	
8-9 AM	1490	0.0	1499	1490	0	1.46	15	68.9	38.3	32.5	
9-10 AM	2183	0.0	1500	1777	406	11.12+	296	68.0	10.3	30.9	
10-11 AM	3043	0.0	1500	1523	1520	16.87+	414	66.9	7.6	30.8	
11AM-NOON	3432	0.0	1500	1506	1926	16.93+	416	66.4	7.6	30.8	
NOON-1PM	4036	0.0	1500	1500	2536	16.85+	417	63.3	7.6	30.8	
1-2 PM	4092	0.0	1500	1500	2592	16.83+	417	62.9	7.6	30.8	
2-3 PM	4008	0.0	1499	1500	2508	16.85+	417	63.5	7.6	30.8	
3-4 PM	3926	0.0	1499	1500	2426	16.87+	417	64.0	7.6	30.8	
4-5 PM	3657	0.0	1500	1500	2157	16.94+	417	65.9	7.6	30.8	
5-6 PM	3450	0.0	1499	1504	1946	16.94+	416	66.4	7.6	30.8	
6-7 PM	2871	0.0	1500	1519	1353	16.85+	413	67.2	7.6	30.8	
7-8 PM	2617	0.0	1500	1506	1111	16.78+	411	67.5	7.6	30.8	
8-9 PM	2144	0.0	1500	1501	643	16.76+	410	68.1	7.6	30.8	
9-10 PM	1743	0.0	1500	1501	243	16.76+	410	68.6	7.6	30.8	
10-11 PM	1323	0.0	1500	1323	0	13.82+	337	69.1	8.6	30.8	
11PM-MID	879	0.0	1500	879	0	1.17	36	69.6	42.3	41.9	

+ INDICATES QUEUEING EXCEEDS USER-SPECIFIED MAXIMUM LIMIT

----- SITE BREAKDOWN DELAYS -----	
BREAKDOWN DURATION (MINS)	0
RANGE OF QUEUE DELAY - MIN (VEH-H) MAX	0.0
AV BREAKDOWNS PER DAY	0.00
AV QUEUE DELAY/DAY (VEH-H)	0.0
AV TOTAL DELAY/DAY (VEH-H)	0.0

----- SITE ACCIDENT DELAYS -----	
BREAKDOWN DURATION (MINS)	0
RANGE OF QUEUE DELAY - MIN (VEH-H) MAX	0
AV BREAKDOWNS PER DAY	0
AV QUEUE DELAY/DAY (VEH-H)	0
AV TOTAL DELAY/DAY (VEH-H)	0

AVERAGE ACCIDENT NUMBERS (PIA/DAY)	
MAIN ROUTE WITHOUT WORKS	0.0176
MAIN ROUTE WITH WORKS	0.0084
'DIVERSION'	0.0165
PIA: Personal Injury Accidents	
IMPACTS ON ROAD USERS	
ROAD USER COSTS PER DAY	\$200,707
CONGESTED HOURS PER DAY*	14

*Delays Exceeding User-Specified Maximum

**IH 94: USH 41 TO IH 43 (MILWAUKEE COUNTY)
CONTINUOUS (24 HOUR) 2 LANE CLOSURE
NO DIVERSION ROUTE (MAX QUEUE METHOD)**

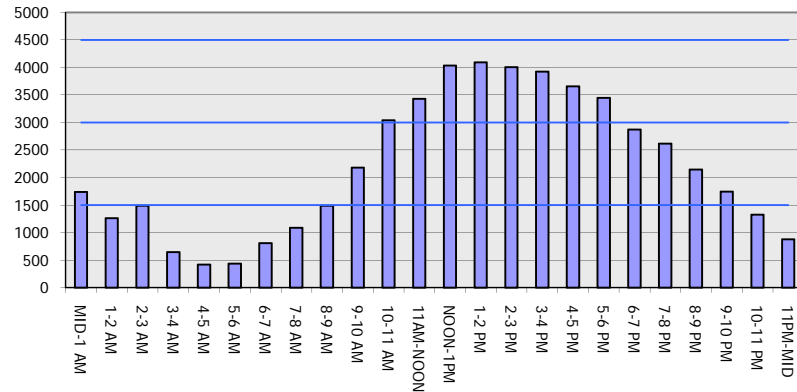
OCTOBER

Analyzed for 2009
Construction Season

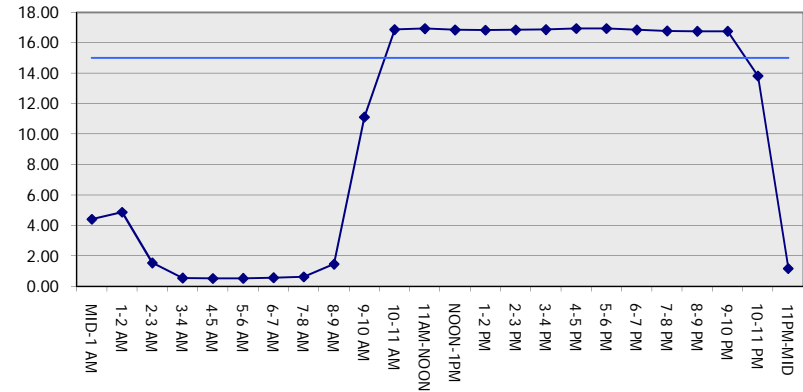
GRAPHICAL REPRESENTATION OF TRAFFIC MODEL INPUT AND OUTPUT

SUNDAY WESTBOUND DIRECTION

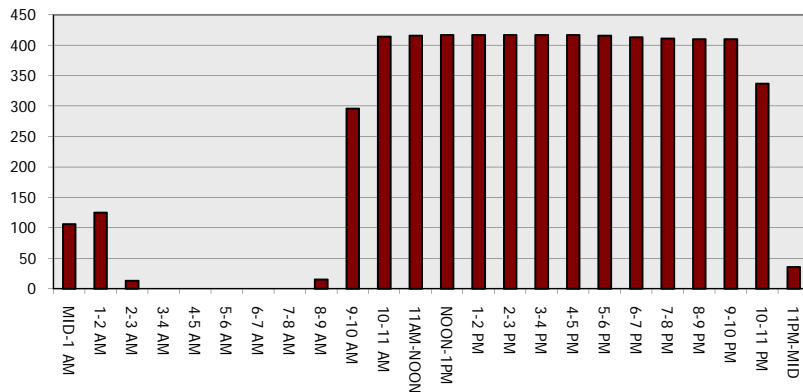
Main Route - Traffic Demand (Vehicles Per Hour)



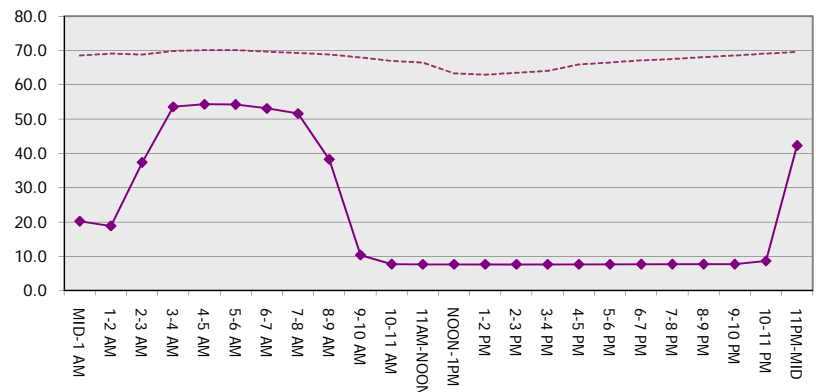
Main Route Average Delay Per Vehicle (Minutes)



Main Route - Average Queue Length (Vehicles)



Main Route - Average Speed (MPH)



IH 94: USH 41 TO IH 43 (MILWAUKEE COUNTY) CONTINUOUS (24 HOUR) 2 LANE CLOSURE NO DIVERSION ROUTE (MAX QUEUE METHOD)	OCTOBER
	Analyzed for 2009 Construction Season

SUMMARY OF TRAFFIC MODEL OUTPUT

SUNDAY EASTBOUND DIRECTION

TIME OF DAY	FLOWS AND CAPACITY IN VEH/HR							AVERAGE SPEEDS IN MPH			
	MAIN ROUTE		SITE CAPA CITY	FLOW		AV.DEL PER VEH (MINS)	AVERAGE QUEUE (VEH)	MAIN ROUTE		SITE	
	DEMAND FLOW	PCT HEAVY		MAIN ROUTE	'DIVER TED'			WITHOUT WORK ZONE	WITH WORK ZONE		
MID-1 AM	1093	0.0	1500	1093	0	0.60	0	69.4	52.2	41.4	
1-2 AM	647	0.0	1500	647	0	0.55	0	69.9	53.6	43.0	
2-3 AM	538	0.0	1500	538	0	0.54	0	70.0	54.0	43.3	
3-4 AM	404	0.0	1500	404	0	0.52	0	70.2	54.3	43.9	
4-5 AM	366	0.0	1500	366	0	0.52	0	70.2	54.5	44.0	
5-6 AM	634	0.0	1500	634	0	0.55	0	69.9	53.7	43.0	
6-7 AM	1038	0.0	1500	1038	0	0.59	0	69.4	52.4	41.5	
7-8 AM	1091	0.0	1499	1091	0	0.61	0	69.4	52.0	41.0	
8-9 AM	1414	0.0	1499	1414	0	1.05	2	69.0	43.7	33.0	
9-10 AM	1953	0.0	1500	1953	0	7.38	209	68.3	14.0	30.8	
10-11 AM	2274	0.0	1499	1495	779	16.77+	411	67.9	7.6	30.8	
11AM-NOON	2756	0.0	1499	1482	1275	16.85+	413	67.3	7.6	30.8	
NOON-1PM	3042	0.0	1499	1488	1554	16.92+	415	66.9	7.6	30.8	
1-2 PM	3102	0.0	1499	1494	1607	16.95+	416	66.9	7.6	30.8	
2-3 PM	3018	0.0	1499	1497	1521	16.92+	415	67.0	7.6	30.8	
3-4 PM	3080	0.0	1499	1499	1581	16.94+	416	66.9	7.6	30.8	
4-5 PM	3061	0.0	1499	1499	1561	16.93+	416	66.9	7.6	30.8	
5-6 PM	2790	0.0	1500	1498	1292	16.83+	413	67.3	7.6	30.8	
6-7 PM	2712	0.0	1499	1499	1214	16.80+	412	67.4	7.6	30.8	
7-8 PM	2696	0.0	1499	1500	1196	16.79+	412	67.4	7.6	30.8	
8-9 PM	2047	0.0	1500	1500	547	16.76+	410	68.2	7.6	30.8	
9-10 PM	1726	0.0	1500	1500	226	16.76+	410	68.6	7.6	30.8	
10-11 PM	1203	0.0	1499	1203	0	11.47+	293	69.2	9.9	32.4	
11PM-MID	790	0.0	1500	790	0	0.76	9	69.7	49.1	42.4	

+ INDICATES QUEUEING EXCEEDS USER-SPECIFIED MAXIMUM LIMIT

----- SITE BREAKDOWN DELAYS -----	
BREAKDOWN DURATION (MINS)	0
RANGE OF QUEUE DELAY - MIN (VEH-H) MAX	0.0
AV BREAKDOWNS PER DAY	0.00
AV QUEUE DELAY/DAY (VEH-H)	0.0
AV TOTAL DELAY/DAY (VEH-H)	0.0

----- SITE ACCIDENT DELAYS -----	
BREAKDOWN DURATION (MINS)	0
RANGE OF QUEUE DELAY - MIN (VEH-H) MAX	0
AV BREAKDOWNS PER DAY	0
AV QUEUE DELAY/DAY (VEH-H)	0
AV TOTAL DELAY/DAY (VEH-H)	0

AVERAGE ACCIDENT NUMBERS (PIA/DAY)	
MAIN ROUTE WITHOUT WORKS	0.0145
MAIN ROUTE WITH WORKS	0.0078
'DIVERSION'	0.0111

PIA: Personal Injury Accidents

ECONOMIC IMPACT ON ROAD USERS	
ROAD USER COSTS PER DAY	\$160,834
CONGESTED HOURS PER DAY*	13

*Delays Exceeding User-Specified Maximum

**IH 94: USH 41 TO IH 43 (MILWAUKEE COUNTY)
CONTINUOUS (24 HOUR) 2 LANE CLOSURE
NO DIVERSION ROUTE (MAX QUEUE METHOD)**

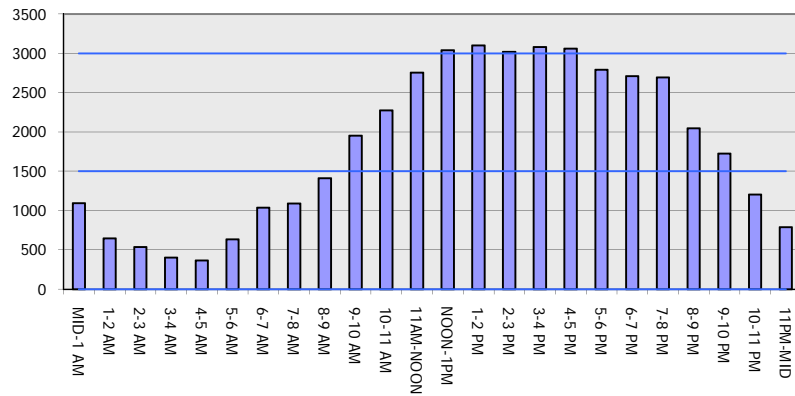
OCTOBER

Analyzed for 2009
Construction Season

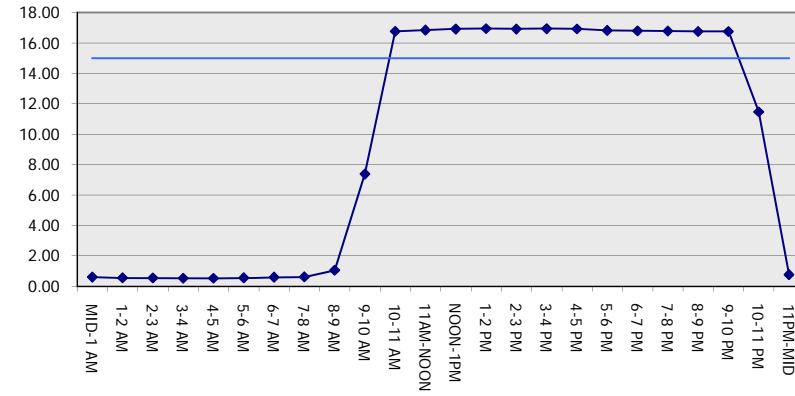
GRAPHICAL REPRESENTATION OF TRAFFIC MODEL INPUT AND OUTPUT

SUNDAY EASTBOUND DIRECTION

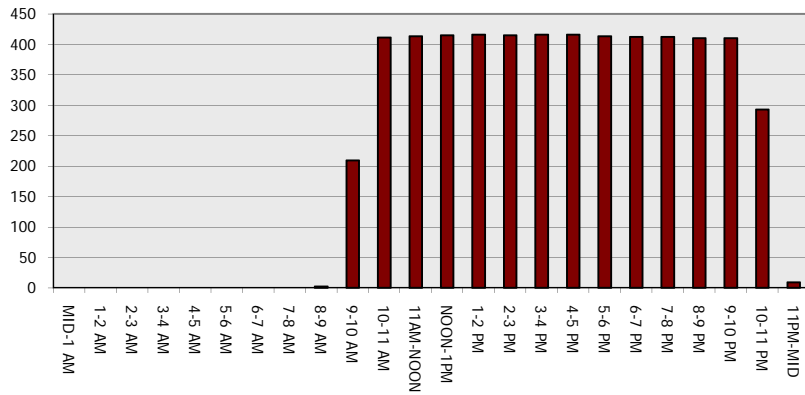
Main Route - Traffic Demand (Vehicles Per Hour)



Main Route Average Delay Per Vehicle (Minutes)



Main Route - Average Queue Length (Vehicles)



Main Route - Average Speed (MPH)

