

IH 94: USH 41 TO IH 43 (MILWAUKEE COUNTY) CONTINUOUS (24 HOUR) 2 LANE CLOSURE NO DIVERSION ROUTE (MAX QUEUE METHOD)	AUGUST
	Analyzed for 2009 Construction Season

SUMMARY OF TRAFFIC MODEL OUTPUT

SATURDAY WESTBOUND DIRECTION

TIME OF DAY	FLOWS AND CAPACITY IN VEH/HR						AVERAGE SPEEDS IN MPH				
	MAIN ROUTE		SITE CAPA CITY	FLOW		AV.DEL PER VEH (MINS)	AVERAGE QUEUE (VEH)	MAIN ROUTE		SITE	
	DEMAND FLOW	PCT HEAVY		MAIN ROUTE	'DIVER TED'			WITHOUT WORK ZONE	WITH WORK ZONE		
MID-1 AM	2108	0.0	1500	1500	608	16.76+	410	68.1	7.6	30.8	
1-2 AM	1286	0.0	1499	1286	0	13.34+	328	69.1	8.8	30.9	
2-3 AM	1336	0.0	1500	1336	0	5.61	130	69.1	17.0	31.9	
3-4 AM	789	0.0	1500	789	0	0.59	0	69.7	52.6	42.4	
4-5 AM	662	0.0	1500	662	0	0.55	0	69.9	53.5	42.9	
5-6 AM	1014	0.0	1499	1014	0	0.60	0	69.5	52.3	41.4	
6-7 AM	1593	0.0	1499	1593	0	1.85	29	68.7	34.2	31.3	
7-8 AM	2130	0.0	1500	1738	392	12.58+	322	68.1	9.3	30.8	
8-9 AM	2888	0.0	1500	1522	1366	16.87+	414	67.1	7.6	30.8	
9-10 AM	3458	0.0	1500	1503	1955	16.94+	416	66.4	7.6	30.8	
10-11 AM	4014	0.0	1500	1500	2514	16.85+	417	63.4	7.6	30.8	
11AM-NOON	4368	0.0	1500	1500	2868	16.76+	417	61.0	7.6	30.8	
NOON-1PM	4622	0.0	1500	1500	3122	16.69+	417	59.3	7.6	30.8	
1-2 PM	4496	0.0	1500	1500	2996	16.73+	417	60.1	7.6	30.8	
2-3 PM	4600	0.0	1500	1500	3100	16.70+	417	59.4	7.6	30.8	
3-4 PM	4638	0.0	1500	1500	3138	16.69+	417	59.2	7.6	30.8	
4-5 PM	4418	0.0	1500	1500	2918	16.75+	417	60.7	7.6	30.8	
5-6 PM	4131	0.0	1500	1500	2631	16.82+	417	62.7	7.6	30.8	
6-7 PM	3380	0.0	1500	1505	1875	16.94+	416	66.5	7.6	30.8	
7-8 PM	2912	0.0	1500	1515	1397	16.87+	414	67.1	7.6	30.8	
8-9 PM	2966	0.0	1500	1508	1459	16.89+	414	67.1	7.6	30.8	
9-10 PM	2409	0.0	1500	1500	908	16.76+	410	67.8	7.6	30.8	
10-11 PM	3344	0.0	1499	1500	1844	16.96+	417	66.6	7.6	30.8	
11PM-MID	2916	0.0	1500	1503	1413	16.87+	414	67.1	7.6	30.8	

+ INDICATES QUEUEING EXCEEDS USER-SPECIFIED MAXIMUM LIMIT

----- SITE BREAKDOWN DELAYS -----	
BREAKDOWN DURATION (MINS)	0
RANGE OF QUEUE DELAY - MIN (VEH-H) MAX	0.0
AV BREAKDOWNS PER DAY	0.00
AV QUEUE DELAY/DAY (VEH-H)	0.0
AV TOTAL DELAY/DAY (VEH-H)	0.0

----- SITE ACCIDENT DELAYS -----	
BREAKDOWN DURATION (MINS)	0
RANGE OF QUEUE DELAY - MIN (VEH-H) MAX	0
AV BREAKDOWNS PER DAY	0
AV QUEUE DELAY/DAY (VEH-H)	0
AV TOTAL DELAY/DAY (VEH-H)	0

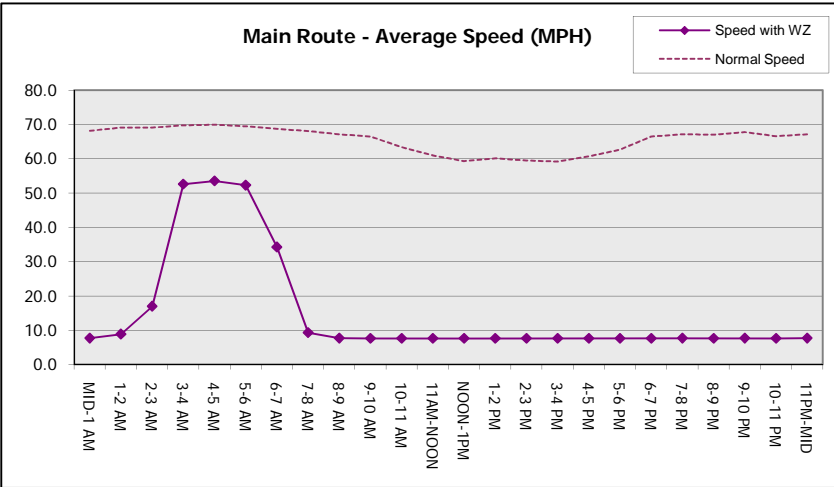
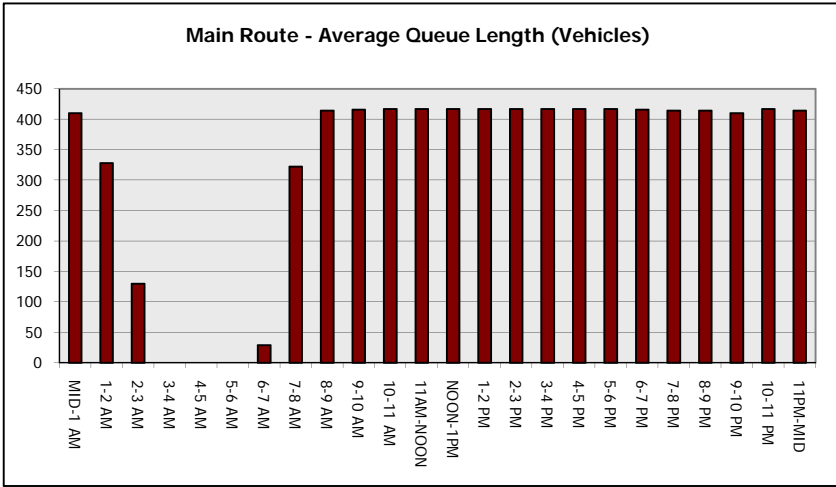
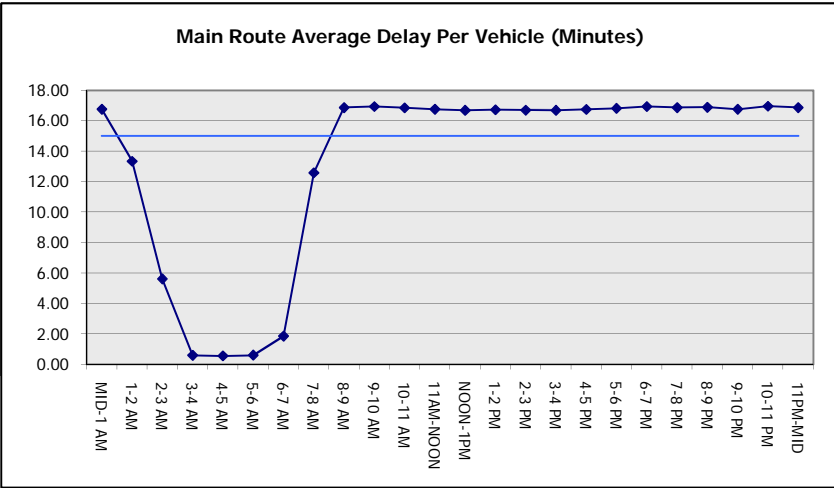
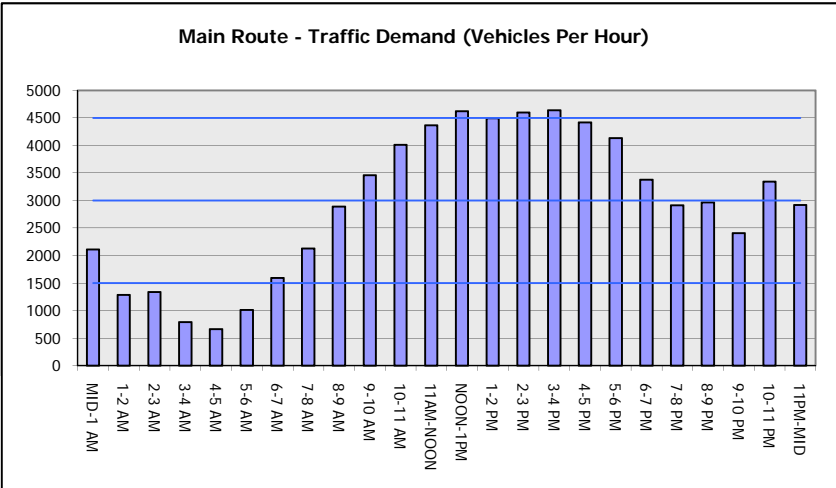
AVERAGE ACCIDENT NUMBERS (PIA/DAY)	
MAIN ROUTE WITHOUT WORKS	0.0236
MAIN ROUTE WITH WORKS	0.0091
'DIVERSION'	0.0283
<small>PIA: Personal Injury Accidents</small>	
IMPACTS ON ROAD USERS	
ROAD USER COSTS PER DAY	\$296,390
CONGESTED HOURS PER DAY*	19

*Delays Exceeding User-Specified Maximum

**IH 94: USH 41 TO IH 43 (MILWAUKEE COUNTY)
CONTINUOUS (24 HOUR) 2 LANE CLOSURE
NO DIVERSION ROUTE (MAX QUEUE METHOD)**

AUGUST
Analyzed for 2009
Construction Season

GRAPHICAL REPRESENTATION OF TRAFFIC MODEL INPUT AND OUTPUT
SATURDAY WESTBOUND DIRECTION



IH 94: USH 41 TO IH 43 (MILWAUKEE COUNTY) CONTINUOUS (24 HOUR) 2 LANE CLOSURE NO DIVERSION ROUTE (MAX QUEUE METHOD)	AUGUST
	Analyzed for 2009 Construction Season

SUMMARY OF TRAFFIC MODEL OUTPUT

SATURDAY EASTBOUND DIRECTION

TIME OF DAY	FLOWS AND CAPACITY IN VEH/HR							AVERAGE SPEEDS IN MPH		
	MAIN ROUTE		SITE CAPA CITY	FLOW		AV.DEL PER VEH (MINS)	AVERAGE QUEUE (VEH)	MAIN ROUTE		SITE
	DEMAND FLOW	PCT HEAVY		MAIN ROUTE	'DIVER TED'			WITHOUT WORK ZONE	WITH WORK ZONE	
MID-1 AM	1237	0.0	1499	1237	0	13.14+	332	69.2	9.0	32.3
1-2 AM	596	0.0	1500	596	0	0.79	14	70.0	48.6	43.0
2-3 AM	533	0.0	1500	533	0	0.54	0	70.0	54.0	43.4
3-4 AM	383	0.0	1500	383	0	0.52	0	70.2	54.4	44.0
4-5 AM	484	0.0	1500	484	0	0.53	0	70.1	54.1	43.6
5-6 AM	815	0.0	1500	815	0	0.57	0	69.7	53.1	42.4
6-7 AM	1240	0.0	1499	1240	0	0.75	0	69.2	49.0	37.5
7-8 AM	1709	0.0	1499	1709	0	3.40	78	68.6	24.0	30.8
8-9 AM	2067	0.0	1500	1723	343	14.80+	365	68.2	8.3	30.8
9-10 AM	2655	0.0	1499	1493	1162	16.80+	412	67.4	7.6	30.8
10-11 AM	2944	0.0	1499	1495	1450	16.89+	414	67.1	7.6	30.8
11AM-NOON	3517	0.0	1499	1500	2017	16.95+	417	66.4	7.6	30.8
NOON-1PM	3712	0.0	1500	1500	2212	16.92+	417	65.5	7.6	30.8
1-2 PM	3692	0.0	1500	1500	2192	16.93+	417	65.6	7.6	30.8
2-3 PM	3892	0.0	1500	1500	2392	16.88+	417	64.3	7.6	30.8
3-4 PM	3843	0.0	1500	1500	2343	16.89+	417	64.6	7.6	30.8
4-5 PM	3744	0.0	1500	1500	2244	16.92+	417	65.3	7.6	30.8
5-6 PM	3918	0.0	1500	1500	2418	16.88+	417	64.1	7.6	30.8
6-7 PM	3704	0.0	1500	1500	2204	16.93+	417	65.6	7.6	30.8
7-8 PM	3232	0.0	1500	1499	1733	16.96+	417	66.7	7.6	30.8
8-9 PM	2871	0.0	1500	1497	1374	16.86+	414	67.2	7.6	30.8
9-10 PM	2402	0.0	1500	1500	903	16.76+	410	67.8	7.6	30.8
10-11 PM	2511	0.0	1499	1500	1012	16.76+	411	67.6	7.6	30.8
11PM-MID	2161	0.0	1500	1500	661	16.76+	410	68.1	7.6	30.8

+ INDICATES QUEUEING EXCEEDS USER-SPECIFIED MAXIMUM LIMIT

----- SITE BREAKDOWN DELAYS -----	
BREAKDOWN DURATION (MINS)	0
RANGE OF QUEUE DELAY - MIN (VEH-H) MAX	0.0
AV BREAKDOWNS PER DAY	0.00
AV QUEUE DELAY/DAY (VEH-H)	0.0
AV TOTAL DELAY/DAY (VEH-H)	0.0

----- SITE ACCIDENT DELAYS -----	
BREAKDOWN DURATION (MINS)	0
RANGE OF QUEUE DELAY - MIN (VEH-H) MAX	0
AV BREAKDOWNS PER DAY	0
AV QUEUE DELAY/DAY (VEH-H)	0
AV TOTAL DELAY/DAY (VEH-H)	0

AVERAGE ACCIDENT NUMBERS (PIA/DAY)	
MAIN ROUTE WITHOUT WORKS	0.0193
MAIN ROUTE WITH WORKS	0.0084
'DIVERSION'	0.0206

PIA: Personal Injury Accidents

ECONOMIC IMPACT ON ROAD USERS	
ROAD USER COSTS PER DAY	\$238,574
CONGESTED HOURS PER DAY*	17

*Delays Exceeding User-Specified Maximum

**IH 94: USH 41 TO IH 43 (MILWAUKEE COUNTY)
CONTINUOUS (24 HOUR) 2 LANE CLOSURE
NO DIVERSION ROUTE (MAX QUEUE METHOD)**

AUGUST

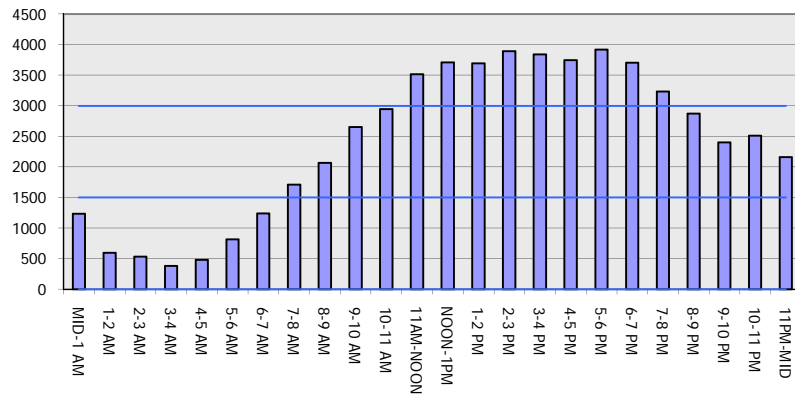
Analyzed for 2009
Construction Season

GRAPHICAL REPRESENTATION OF TRAFFIC MODEL INPUT AND OUTPUT

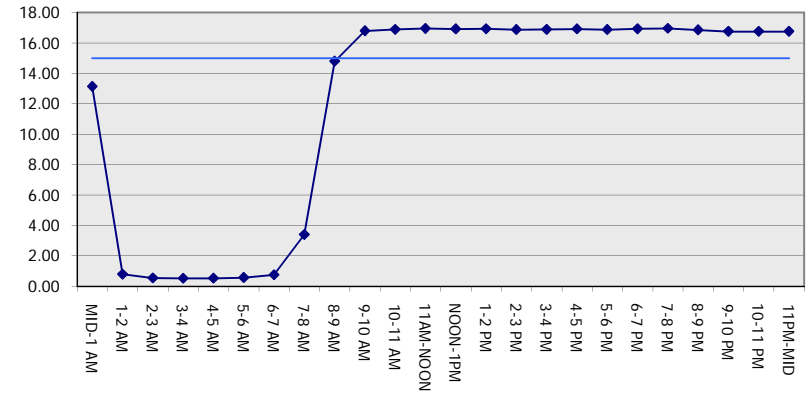
SATURDAY

EASTBOUND DIRECTION

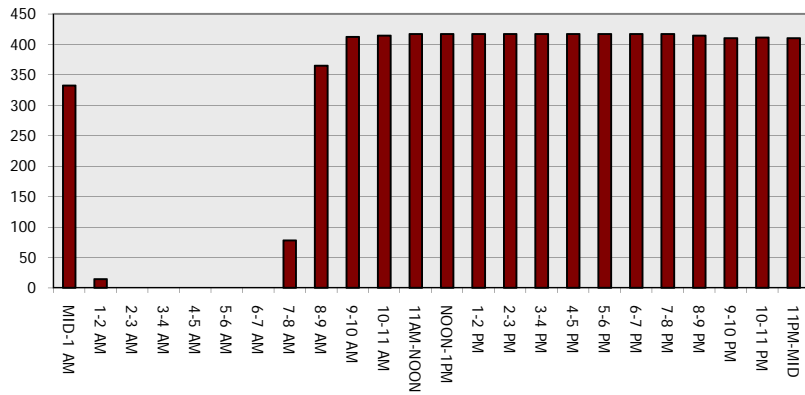
Main Route - Traffic Demand (Vehicles Per Hour)



Main Route Average Delay Per Vehicle (Minutes)



Main Route - Average Queue Length (Vehicles)



Main Route - Average Speed (MPH)

