

IH 94: USH 41 AND IH 43 (MILWAUKEE COUNTY) CONTINUOUS (24 HOUR) CLOSURE NO DIVERSION ROUTE (MAX QUEUE METHOD)	AUGUST
	Analyzed for 2009 Construction Season

SUMMARY OF TRAFFIC MODEL OUTPUT

SATURDAY WESTBOUND DIRECTION

TIME OF DAY	FLOWS AND CAPACITY IN VEH/HR						AVERAGE SPEEDS IN MPH			
	MAIN ROUTE		SITE CAPA CITY	FLOW		AV.DEL PER VEH (MINS)	AVERAGE QUEUE (VEH)	MAIN ROUTE		SITE
	DEMAND FLOW	PCT HEAVY		MAIN ROUTE	'DIVER TED'			WITHOUT WORK ZONE	WITH WORK ZONE	
MID-1 AM	2108	0.0	2999	2108	0	1.57	133	68.1	37.1	46.3
1-2 AM	1286	0.0	3000	1286	0	0.35	0	69.1	58.1	49.7
2-3 AM	1336	0.0	3000	1336	0	0.35	0	69.1	58.1	49.7
3-4 AM	789	0.0	3000	789	0	0.35	0	69.7	58.3	49.7
4-5 AM	662	0.0	3000	662	0	0.36	0	69.9	58.4	49.7
5-6 AM	1014	0.0	3000	1014	0	0.35	0	69.5	58.2	49.7
6-7 AM	1593	0.0	3000	1593	0	0.34	0	68.7	57.9	49.7
7-8 AM	2130	0.0	2999	2130	0	0.33	0	68.1	57.7	49.7
8-9 AM	2888	0.0	2999	2888	0	0.74	6	67.1	48.1	39.6
9-10 AM	3458	0.0	3000	3458	0	4.07	220	66.4	21.7	37.3
10-11 AM	4014	0.0	3000	3414	599	15.06+	808	63.4	10.7	37.3
11AM-NOON	4368	0.0	2999	3033	1336	17.12+	920	61.0	10.1	37.3
NOON-1PM	4622	0.0	3000	3019	1602	17.55+	949	59.3	10.0	37.3
1-2 PM	4496	0.0	3000	2986	1510	17.42+	939	60.1	10.1	37.3
2-3 PM	4600	0.0	3000	3015	1585	17.54+	948	59.4	10.0	37.3
3-4 PM	4638	0.0	3000	3000	1639	17.60+	952	59.2	10.0	37.3
4-5 PM	4418	0.0	3000	2970	1448	17.32+	932	60.7	10.1	37.3
5-6 PM	4131	0.0	3000	2984	1146	16.92+	904	62.7	10.2	37.3
6-7 PM	3380	0.0	3000	2992	388	16.83+	888	66.5	10.2	37.3
7-8 PM	2912	0.0	2999	2898	14	16.24+	854	67.1	10.4	37.3
8-9 PM	2966	0.0	3000	2966	0	15.15+	794	67.1	10.7	37.3
9-10 PM	2409	0.0	2999	2409	0	8.38	454	67.8	14.2	38.7
10-11 PM	3344	0.0	3000	3344	0	6.40	327	66.6	16.0	37.3
11PM-MID	2916	0.0	2999	2916	0	10.00	511	67.1	12.7	37.3

+ INDICATES QUEUEING EXCEEDS USER-SPECIFIED MAXIMUM LIMIT

BREAKDOWN DURATION (MINS)	0
RANGE OF QUEUE DELAY - MIN (VEH-H) MAX	0.0
AV BREAKDOWNS PER DAY	0.00
AV QUEUE DELAY/DAY (VEH-H)	0.0
AV TOTAL DELAY/DAY (VEH-H)	0.0

BREAKDOWN DURATION (MINS)	0
RANGE OF QUEUE DELAY - MIN (VEH-H) MAX	0
AV BREAKDOWNS PER DAY	0
AV QUEUE DELAY/DAY (VEH-H)	0
AV TOTAL DELAY/DAY (VEH-H)	0

MAIN ROUTE WITHOUT WORKS	0.0236
MAIN ROUTE WITH WORKS	0.0159
'DIVERSION'	0.0087
PIA: Personal Injury Accidents	
IMPACTS ON ROAD USERS	
ROAD USER COSTS PER DAY	\$234,644
CONGESTED HOURS PER DAY*	11

*Delays Exceeding User-Specified Maximum

**IH 94: USH 41 AND IH 43 (MILWAUKEE COUNTY)
CONTINUOUS (24 HOUR) CLOSURE
NO DIVERSION ROUTE (MAX QUEUE METHOD)**

AUGUST

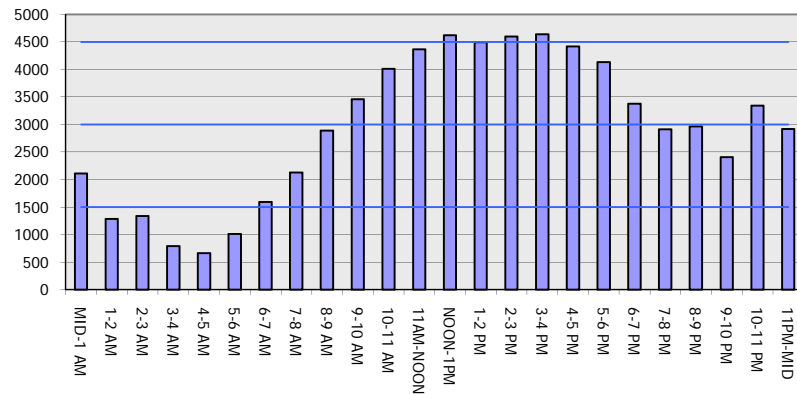
Analyzed for 2009
Construction Season

GRAPHICAL REPRESENTATION OF TRAFFIC MODEL INPUT AND OUTPUT

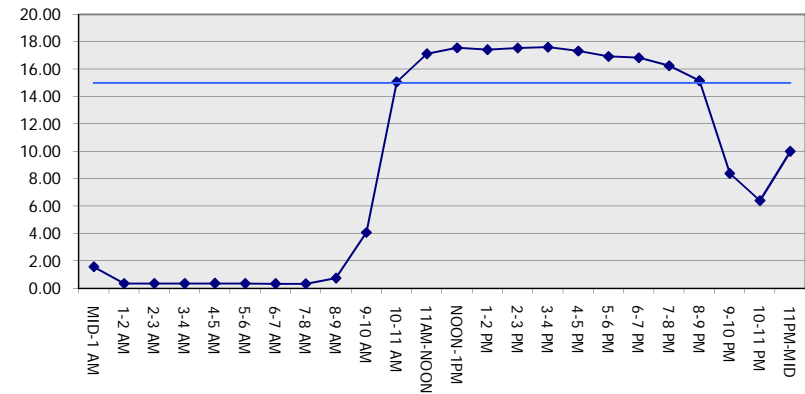
SATURDAY

WESTBOUND DIRECTION

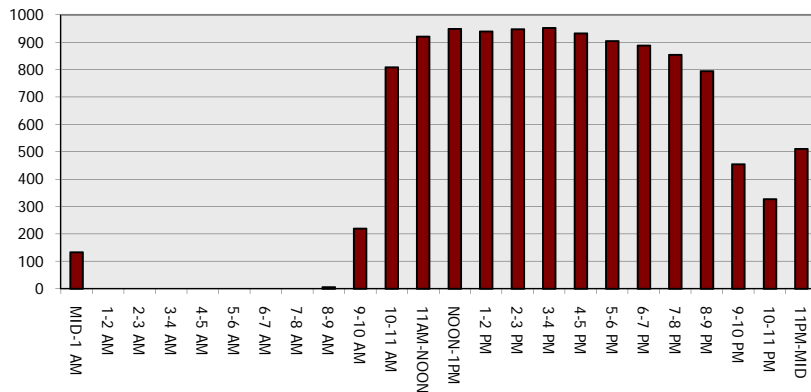
Main Route - Traffic Demand (Vehicles Per Hour)



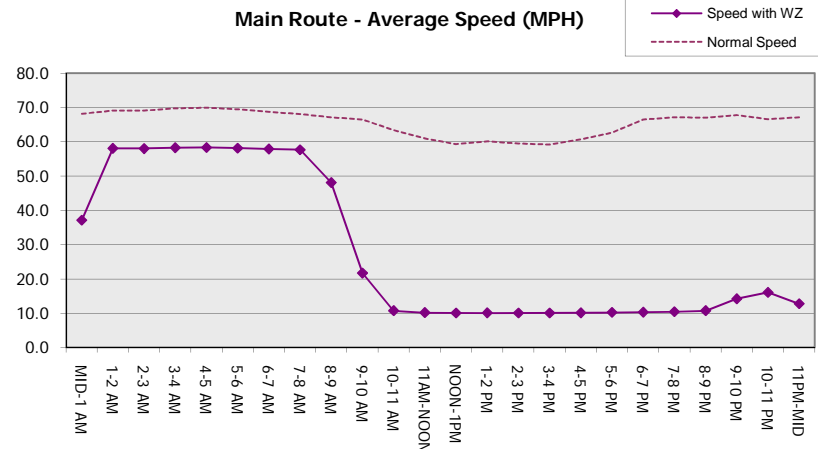
Main Route Average Delay Per Vehicle (Minutes)



Main Route - Average Queue Length (Vehicles)



Main Route - Average Speed (MPH)



IH 94: USH 41 AND IH 43 (MILWAUKEE COUNTY) CONTINUOUS (24 HOUR) CLOSURE NO DIVERSION ROUTE (MAX QUEUE METHOD)	AUGUST
	Analyzed for 2009 Construction Season

SUMMARY OF TRAFFIC MODEL OUTPUT

SATURDAY EASTBOUND DIRECTION

TIME OF DAY	FLOWS AND CAPACITY IN VEH/HR							AVERAGE SPEEDS IN MPH		
	MAIN ROUTE		SITE CAPA CITY	FLOW		AV.DEL PER VEH (MINS)	AVERAGE QUEUE (VEH)	MAIN ROUTE		SITE
	DEMAND FLOW	PCT HEAVY		MAIN ROUTE	'DIVER TED'			WITHOUT WORK ZONE	WITH WORK ZONE	
MID-1 AM	1237	0.0	3000	1237	0	0.35	0	69.2	58.1	49.7
1-2 AM	596	0.0	3000	596	0	0.36	0	70.0	58.4	49.7
2-3 AM	533	0.0	3000	533	0	0.36	0	70.0	58.4	49.7
3-4 AM	383	0.0	3000	383	0	0.36	0	70.2	58.5	49.7
4-5 AM	484	0.0	3000	484	0	0.36	0	70.1	58.4	49.7
5-6 AM	815	0.0	3000	815	0	0.35	0	69.7	58.3	49.7
6-7 AM	1240	0.0	3000	1240	0	0.35	0	69.2	58.1	49.7
7-8 AM	1709	0.0	3000	1709	0	0.34	0	68.6	57.9	49.7
8-9 AM	2067	0.0	3000	2067	0	0.33	0	68.2	57.8	49.7
9-10 AM	2655	0.0	2999	2655	0	0.50	0	67.4	53.2	43.5
10-11 AM	2944	0.0	2999	2944	0	0.78	6	67.1	47.4	38.6
11AM-NOON	3517	0.0	3000	3517	0	4.72	260	66.4	19.9	37.3
NOON-1PM	3712	0.0	3000	3346	366	15.13+	803	65.5	10.7	37.3
1-2 PM	3692	0.0	3000	3001	690	16.84+	891	65.6	10.2	37.3
2-3 PM	3892	0.0	3000	3001	891	16.81+	893	64.3	10.2	37.3
3-4 PM	3843	0.0	3000	3001	843	16.82+	892	64.6	10.2	37.3
4-5 PM	3744	0.0	3000	3000	744	16.83+	891	65.3	10.2	37.3
5-6 PM	3918	0.0	2999	3001	917	16.80+	893	64.1	10.2	37.3
6-7 PM	3704	0.0	3000	2999	705	16.84+	891	65.6	10.2	37.3
7-8 PM	3232	0.0	3000	2998	235	16.81+	887	66.7	10.2	37.3
8-9 PM	2871	0.0	2999	2869	2	16.14+	849	67.2	10.4	37.3
9-10 PM	2402	0.0	2999	2402	0	8.63	471	67.8	14.0	39.2
10-11 PM	2511	0.0	3000	2511	0	0.77	28	67.6	47.8	45.5
11PM-MID	2161	0.0	3000	2161	0	0.33	0	68.1	57.7	49.7

+ INDICATES QUEUEING EXCEEDS USER-SPECIFIED MAXIMUM LIMIT

----- SITE BREAKDOWN DELAYS -----	
BREAKDOWN DURATION (MINS)	0
RANGE OF QUEUE DELAY - MIN (VEH-H) MAX	0.0
AV BREAKDOWNS PER DAY	0.00
AV QUEUE DELAY/DAY (VEH-H)	0.0
AV TOTAL DELAY/DAY (VEH-H)	0.0

----- SITE ACCIDENT DELAYS -----	
BREAKDOWN DURATION (MINS)	0
RANGE OF QUEUE DELAY - MIN (VEH-H) MAX	0
AV BREAKDOWNS PER DAY	0
AV QUEUE DELAY/DAY (VEH-H)	0
AV TOTAL DELAY/DAY (VEH-H)	0

AVERAGE ACCIDENT NUMBERS (PIA/DAY)	
MAIN ROUTE WITHOUT WORKS	0.0193
MAIN ROUTE WITH WORKS	0.0141
'DIVERSION'	0.0042

PIA: Personal Injury Accidents

ECONOMIC IMPACT ON ROAD USERS	
ROAD USER COSTS PER DAY	\$162,848
CONGESTED HOURS PER DAY*	9

*Delays Exceeding User-Specified Maximum

**IH 94: USH 41 AND IH 43 (MILWAUKEE COUNTY)
CONTINUOUS (24 HOUR) CLOSURE
NO DIVERSION ROUTE (MAX QUEUE METHOD)**

AUGUST
Analyzed for 2009
Construction Season

GRAPHICAL REPRESENTATION OF TRAFFIC MODEL INPUT AND OUTPUT
SATURDAY EASTBOUND DIRECTION

