

**USH 45: STH 145 TO CTH E (MILWAUKEE COUNTY)
CONTINUOUS (24 HOUR) 2 LANE CLOSURE
NO DIVERSION ROUTE (MAX QUEUE METHOD)**

OCTOBER

Analyzed for 2009
Construction Season

SUMMARY OF TRAFFIC MODEL OUTPUT

SUNDAY SOUTHBOUND DIRECTION

TIME OF DAY	FLOWS AND CAPACITY IN VEH/HR						AVERAGE SPEEDS IN MPH				
	MAIN ROUTE		SITE CAPA CITY	FLOW		AV.DEL PER VEH (MINS)	AVERAGE QUEUE (VEH)	MAIN ROUTE		SITE	
	DEMAND FLOW	PCT HEAVY		MAIN ROUTE	'DIVER TED'			WITHOUT WORK ZONE	WITH WORK ZONE		
MID-1 AM	595	0.0	1500	595	0	0.54	0	70.0	54.8	43.2	
1-2 AM	350	0.0	1500	350	0	0.52	0	70.2	55.6	44.1	
2-3 AM	270	0.0	1500	270	0	0.51	0	70.2	55.8	44.4	
3-4 AM	187	0.0	1500	187	0	0.50	0	70.2	56.1	44.7	
4-5 AM	200	0.0	1500	200	0	0.50	0	70.2	56.0	44.7	
5-6 AM	322	0.0	1500	322	0	0.51	0	70.2	55.6	44.2	
6-7 AM	617	0.0	1500	617	0	0.55	0	70.0	54.8	43.0	
7-8 AM	832	0.0	1500	832	0	0.57	0	69.7	54.2	42.3	
8-9 AM	1154	0.0	1499	1154	0	0.70	0	69.3	51.3	38.8	
9-10 AM	1902	0.0	1499	1902	0	5.66	163	68.4	17.9	30.8	
10-11 AM	2374	0.0	1499	1500	874	16.61+	407	67.8	7.9	30.8	
11AM-NOON	2767	0.0	1500	1502	1265	16.64+	408	67.3	7.9	30.8	
NOON-1PM	3185	0.0	1499	1501	1684	16.73+	411	66.8	7.9	30.8	
1-2 PM	3335	0.0	1500	1500	1835	16.73+	411	66.6	7.9	30.8	
2-3 PM	3203	0.0	1500	1500	1703	16.73+	411	66.8	7.9	30.8	
3-4 PM	3404	0.0	1500	1500	1904	16.73+	411	66.5	7.9	30.8	
4-5 PM	3288	0.0	1500	1500	1788	16.73+	411	66.6	7.9	30.8	
5-6 PM	3046	0.0	1500	1502	1544	16.71+	410	66.9	7.9	30.8	
6-7 PM	2834	0.0	1500	1500	1333	16.66+	408	67.2	7.9	30.8	
7-8 PM	2249	0.0	1500	1500	749	16.62+	407	67.9	7.9	30.8	
8-9 PM	1551	0.0	1500	1455	97	16.21+	395	68.8	8.1	30.8	
9-10 PM	1111	0.0	1499	1111	0	5.90	193	69.4	17.5	35.1	
10-11 PM	748	0.0	1500	748	0	0.56	0	69.8	54.4	42.6	
11PM-MID	509	0.0	1500	509	0	0.53	0	70.1	55.1	43.5	

+ INDICATES QUEUEING EXCEEDS USER-SPECIFIED MAXIMUM LIMIT

----- SITE BREAKDOWN DELAYS -----	
BREAKDOWN DURATION (MINS)	0
RANGE OF QUEUE DELAY - MIN (VEH-H) MAX	0.0
AV BREAKDOWNS PER DAY	0.00
AV QUEUE DELAY/DAY (VEH-H)	0.0
AV TOTAL DELAY/DAY (VEH-H)	0.0

----- SITE ACCIDENT DELAYS -----	
BREAKDOWN DURATION (MINS)	0
RANGE OF QUEUE DELAY - MIN (VEH-H) MAX	0
AV BREAKDOWNS PER DAY	0
AV QUEUE DELAY/DAY (VEH-H)	0
AV TOTAL DELAY/DAY (VEH-H)	0

AVERAGE ACCIDENT NUMBERS (PIA/DAY)	
MAIN ROUTE WITHOUT WORKS	0.0146
MAIN ROUTE WITH WORKS	0.0076
'DIVERSION'	0.0125
PIA: Personal Injury Accidents	
IMPACTS ON ROAD USERS	
ROAD USER COSTS PER DAY	\$152,189
CONGESTED HOURS PER DAY*	11

*Delays Exceeding User-Specified Maximum

**USH 45: STH 145 TO CTH E (MILWAUKEE COUNTY)
CONTINUOUS (24 HOUR) 2 LANE CLOSURE
NO DIVERSION ROUTE (MAX QUEUE METHOD)**

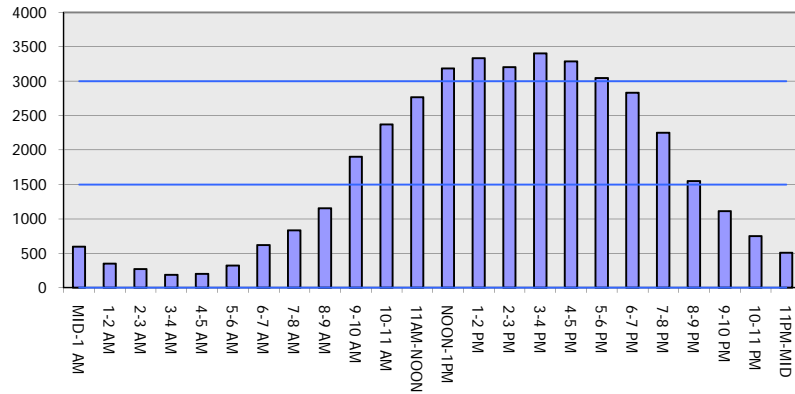
OCTOBER

Analyzed for 2009
Construction Season

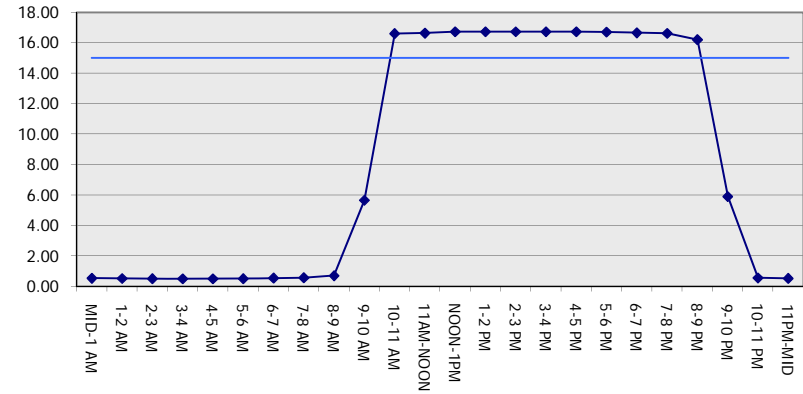
GRAPHICAL REPRESENTATION OF TRAFFIC MODEL INPUT AND OUTPUT

SUNDAY SOUTHBOUND DIRECTION

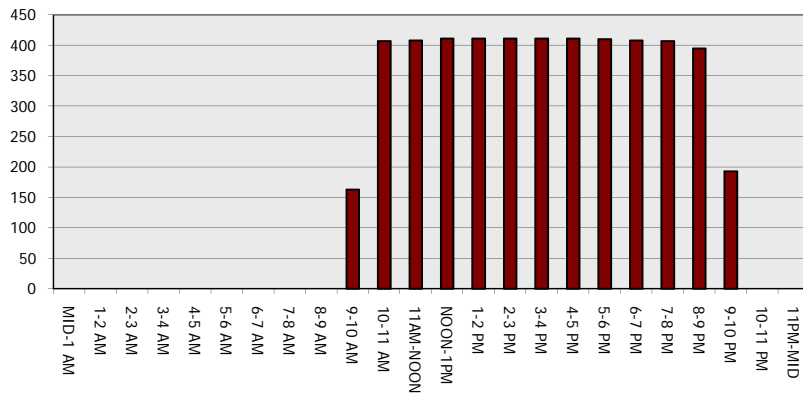
Main Route - Traffic Demand (Vehicles Per Hour)



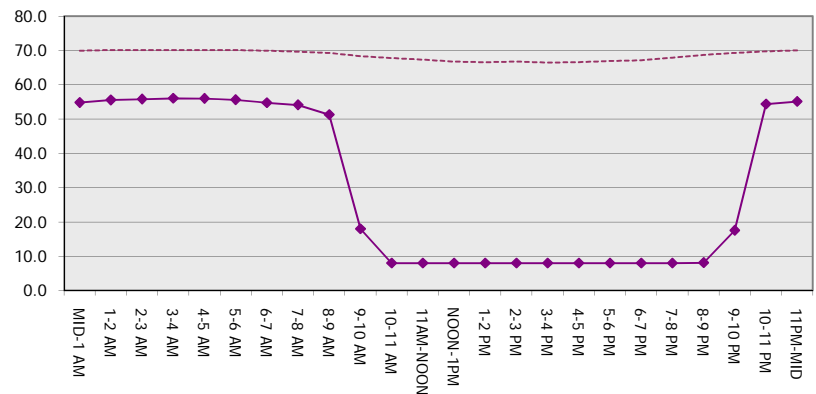
Main Route Average Delay Per Vehicle (Minutes)



Main Route - Average Queue Length (Vehicles)



Main Route - Average Speed (MPH)



USH 45: STH 145 TO CTH E (MILWAUKEE COUNTY) CONTINUOUS (24 HOUR) 2 LANE CLOSURE NO DIVERSION ROUTE (MAX QUEUE METHOD)	OCTOBER
	Analyzed for 2009 Construction Season

SUMMARY OF TRAFFIC MODEL OUTPUT

SUNDAY NORTHBOUND DIRECTION

TIME OF DAY	FLOWS AND CAPACITY IN VEH/HR						AVERAGE SPEEDS IN MPH			
	MAIN ROUTE		SITE CAPA CITY	FLOW		AV.DEL PER VEH (MINS)	AVERAGE QUEUE (VEH)	MAIN ROUTE		SITE
	DEMAND FLOW	PCT HEAVY		MAIN ROUTE	'DIVER TED'			WITHOUT WORK ZONE	WITH WORK ZONE	
MID-1 AM	783	0.0	1500	783	0	0.56	0	69.7	54.3	42.5
1-2 AM	452	0.0	1500	452	0	0.53	0	70.2	55.3	43.7
2-3 AM	404	0.0	1500	404	0	0.52	0	70.2	55.5	43.9
3-4 AM	258	0.0	1500	258	0	0.50	0	70.2	55.8	44.5
4-5 AM	207	0.0	1500	207	0	0.50	0	70.2	56.0	44.6
5-6 AM	360	0.0	1500	360	0	0.52	0	70.2	55.6	44.0
6-7 AM	558	0.0	1500	558	0	0.54	0	70.0	55.0	43.3
7-8 AM	908	0.0	1500	908	0	0.58	0	69.6	53.9	42.0
8-9 AM	1291	0.0	1499	1291	0	0.82	0	69.1	49.0	36.0
9-10 AM	1773	0.0	1499	1773	0	4.14	105	68.6	22.4	30.8
10-11 AM	2273	0.0	1499	1648	625	16.05+	393	67.9	8.1	30.8
11AM-NOON	2665	0.0	1499	1497	1168	16.63+	407	67.4	7.9	30.8
NOON-1PM	2986	0.0	1499	1497	1489	16.70+	409	67.0	7.9	30.8
1-2 PM	2893	0.0	1499	1498	1395	16.67+	409	67.1	7.9	30.8
2-3 PM	2817	0.0	1500	1499	1319	16.66+	408	67.3	7.9	30.8
3-4 PM	3048	0.0	1499	1500	1548	16.71+	410	66.9	7.9	30.8
4-5 PM	2894	0.0	1500	1499	1394	16.67+	409	67.1	7.9	30.8
5-6 PM	2636	0.0	1500	1499	1137	16.62+	407	67.4	7.9	30.8
6-7 PM	2239	0.0	1500	1500	739	16.62+	407	67.9	7.9	30.8
7-8 PM	1856	0.0	1500	1500	356	16.62+	406	68.4	7.9	30.8
8-9 PM	1376	0.0	1499	1376	0	15.20+	371	69.0	8.4	30.8
9-10 PM	1102	0.0	1499	1102	0	2.98	112	69.4	27.8	37.1
10-11 PM	1017	0.0	1500	1017	0	0.59	0	69.5	53.6	41.6
11PM-MID	609	0.0	1500	609	0	0.54	0	70.0	54.8	43.1

+ INDICATES QUEUEING EXCEEDS USER-SPECIFIED MAXIMUM LIMIT

----- SITE BREAKDOWN DELAYS -----	
BREAKDOWN DURATION (MINS)	0
RANGE OF QUEUE DELAY - MIN (VEH-H) MAX	0.0
AV BREAKDOWNS PER DAY	0.00
AV QUEUE DELAY/DAY (VEH-H)	0.0
AV TOTAL DELAY/DAY (VEH-H)	0.0

----- SITE ACCIDENT DELAYS -----	
BREAKDOWN DURATION (MINS)	0
RANGE OF QUEUE DELAY - MIN (VEH-H) MAX	0
AV BREAKDOWNS PER DAY	0
AV QUEUE DELAY/DAY (VEH-H)	0
AV TOTAL DELAY/DAY (VEH-H)	0

AVERAGE ACCIDENT NUMBERS (PIA/DAY)	
MAIN ROUTE WITHOUT WORKS	0.0137
MAIN ROUTE WITH WORKS	0.0079
'DIVERSION'	0.0095

PIA: Personal Injury Accidents

ECONOMIC IMPACT ON ROAD USERS	
ROAD USER COSTS PER DAY	\$132,840
CONGESTED HOURS PER DAY*	11

*Delays Exceeding User-Specified Maximum

**USH 45: STH 145 TO CTH E (MILWAUKEE COUNTY)
CONTINUOUS (24 HOUR) 2 LANE CLOSURE
NO DIVERSION ROUTE (MAX QUEUE METHOD)**

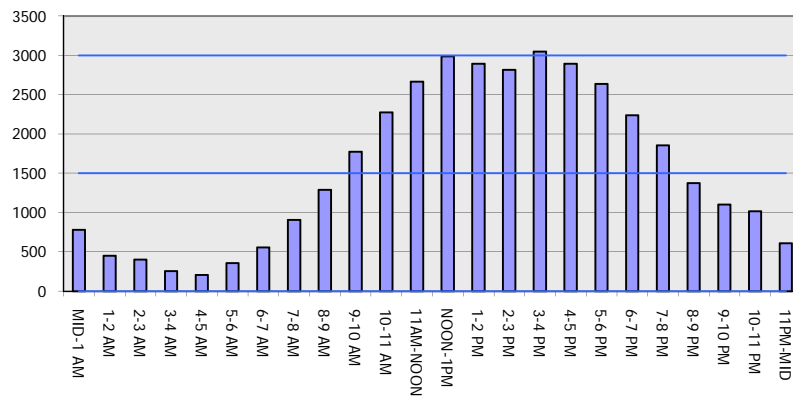
OCTOBER

Analyzed for 2009
Construction Season

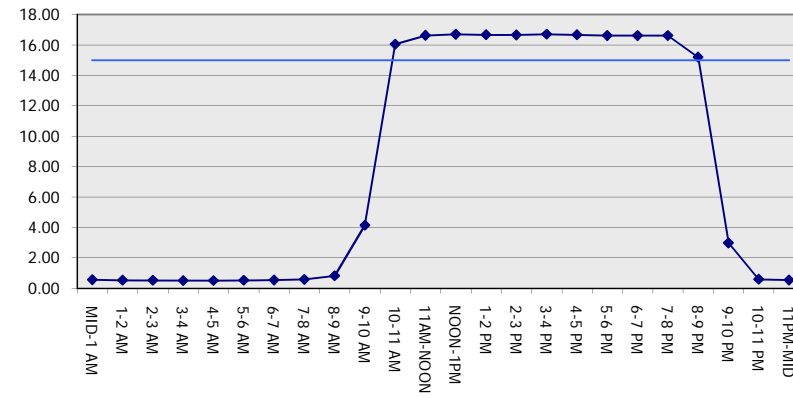
GRAPHICAL REPRESENTATION OF TRAFFIC MODEL INPUT AND OUTPUT

SUNDAY NORTHBOUND DIRECTION

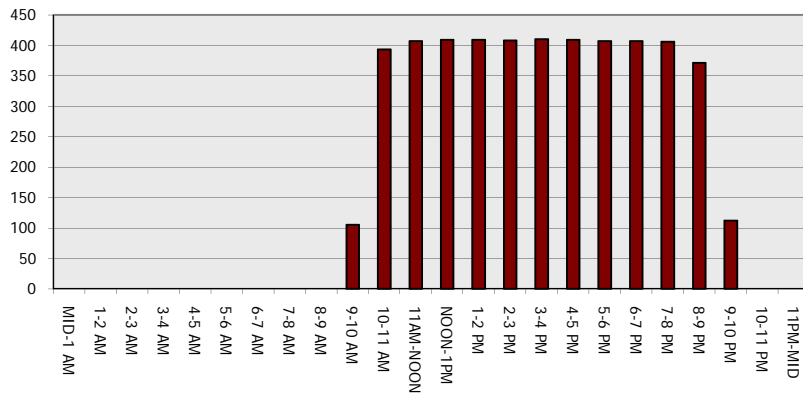
Main Route - Traffic Demand (Vehicles Per Hour)



Main Route Average Delay Per Vehicle (Minutes)



Main Route - Average Queue Length (Vehicles)



Main Route - Average Speed (MPH)

