

**USH 45: STH 145 TO CTH E (MILWAUKEE COUNTY)  
CONTINUOUS (24 HOUR) CLOSURE  
NO DIVERSION ROUTE (MAX QUEUE METHOD)**

**OCTOBER**

Analyzed for 2009  
Construction Season

**SUMMARY OF TRAFFIC MODEL OUTPUT**

SUNDAY SOUTHBOUND DIRECTION

TIME OF DAY	FLOWS AND CAPACITY IN VEH/HR						AVERAGE SPEEDS IN MPH			
	MAIN ROUTE		SITE CAPA CITY	FLOW		AV.DEL PER VEH (MINS)	AVERAGE QUEUE (VEH)	MAIN ROUTE		SITE
	DEMAND FLOW	PCT HEAVY		MAIN ROUTE	'DIVER TED'			WITHOUT WORK ZONE	WITH WORK ZONE	
MID-1 AM	595	0.0	3000	595	0	0.36	0	70.0	59.2	49.7
1-2 AM	350	0.0	3000	350	0	0.36	0	70.2	59.3	49.7
2-3 AM	270	0.0	3000	270	0	0.36	0	70.2	59.3	49.7
3-4 AM	187	0.0	3000	187	0	0.36	0	70.2	59.3	49.7
4-5 AM	200	0.0	3000	200	0	0.36	0	70.2	59.3	49.7
5-6 AM	322	0.0	3000	322	0	0.36	0	70.2	59.3	49.7
6-7 AM	617	0.0	3000	617	0	0.36	0	70.0	59.2	49.7
7-8 AM	832	0.0	3000	832	0	0.35	0	69.7	59.1	49.7
8-9 AM	1154	0.0	3000	1154	0	0.35	0	69.3	59.0	49.7
9-10 AM	1902	0.0	3000	1902	0	0.34	0	68.4	58.6	49.7
10-11 AM	2374	0.0	3000	2374	0	0.33	0	67.8	58.4	49.7
11AM-NOON	2767	0.0	2999	2767	0	0.57	0	67.3	52.5	41.2
NOON-1PM	3185	0.0	2999	3185	0	1.91	74	66.8	34.7	37.3
1-2 PM	3335	0.0	3000	3335	0	6.86	352	66.6	16.1	37.3
2-3 PM	3203	0.0	2999	3203	0	11.92	619	66.8	12.1	37.3
3-4 PM	3404	0.0	3000	3187	217	16.14+	851	66.5	10.7	37.3
4-5 PM	3288	0.0	2999	2987	301	16.68+	879	66.6	10.6	37.3
5-6 PM	3046	0.0	2999	2974	72	16.62+	875	66.9	10.6	37.3
6-7 PM	2834	0.0	2999	2834	0	15.46+	812	67.2	10.9	37.3
7-8 PM	2249	0.0	2999	2249	0	5.34	370	67.9	20.2	43.2
8-9 PM	1551	0.0	3000	1551	0	0.34	0	68.8	58.7	49.7
9-10 PM	1111	0.0	3000	1111	0	0.35	0	69.4	59.0	49.7
10-11 PM	748	0.0	3000	748	0	0.35	0	69.8	59.2	49.7
11PM-MID	509	0.0	3000	509	0	0.36	0	70.1	59.3	49.7

+ INDICATES QUEUEING EXCEEDS USER-SPECIFIED MAXIMUM LIMIT

*----- SITE BREAKDOWN DELAYS -----*	
BREAKDOWN DURATION (MINS)	0
RANGE OF QUEUE DELAY - MIN (VEH-H) MAX	0.0
AV BREAKDOWNS PER DAY	0.00
AV QUEUE DELAY/DAY (VEH-H)	0.0
AV TOTAL DELAY/DAY (VEH-H)	0.0

*----- SITE ACCIDENT DELAYS -----*	
BREAKDOWN DURATION (MINS)	0
RANGE OF QUEUE DELAY - MIN (VEH-H) MAX	0
AV BREAKDOWNS PER DAY	0
AV QUEUE DELAY/DAY (VEH-H)	0
AV TOTAL DELAY/DAY (VEH-H)	0

AVERAGE ACCIDENT NUMBERS (PIA/DAY)	
MAIN ROUTE WITHOUT WORKS	0.0146
MAIN ROUTE WITH WORKS	0.0118
'DIVERSION'	0.0005
PIA: Personal Injury Accidents	
IMPACTS ON ROAD USERS	
ROAD USER COSTS PER DAY	\$81,858
CONGESTED HOURS PER DAY*	4

\*Delays Exceeding User-Specified Maximum

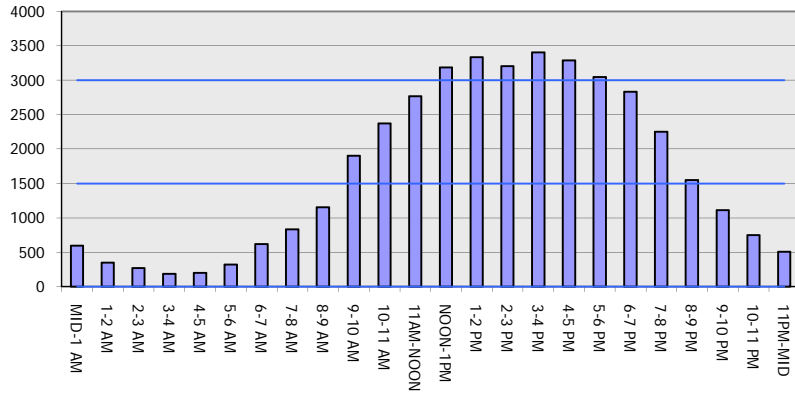
**USH 45: STH 145 TO CTH E (MILWAUKEE COUNTY)  
CONTINUOUS (24 HOUR) CLOSURE  
NO DIVERSION ROUTE (MAX QUEUE METHOD)**

**OCTOBER**  
Analyzed for 2009  
Construction Season

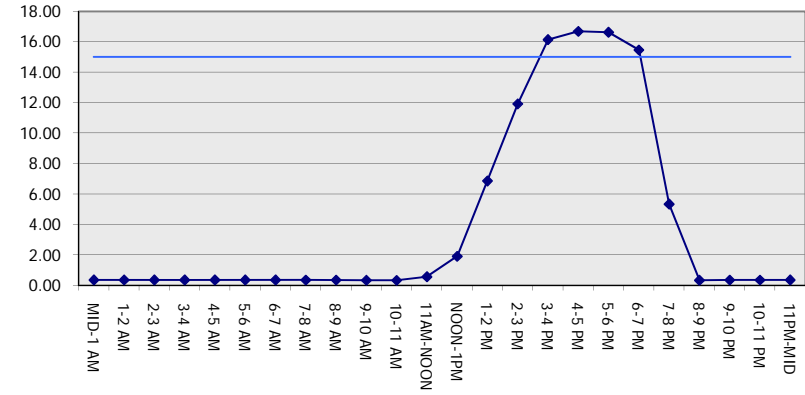
**GRAPHICAL REPRESENTATION OF TRAFFIC MODEL INPUT AND OUTPUT**

**SUNDAY SOUTHBOUND DIRECTION**

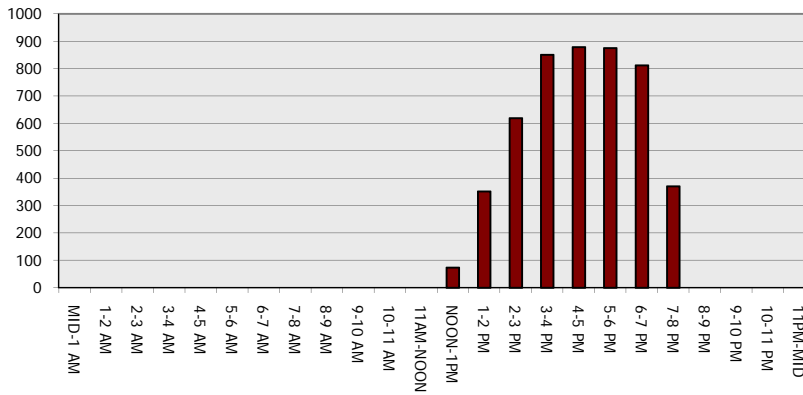
**Main Route - Traffic Demand (Vehicles Per Hour)**



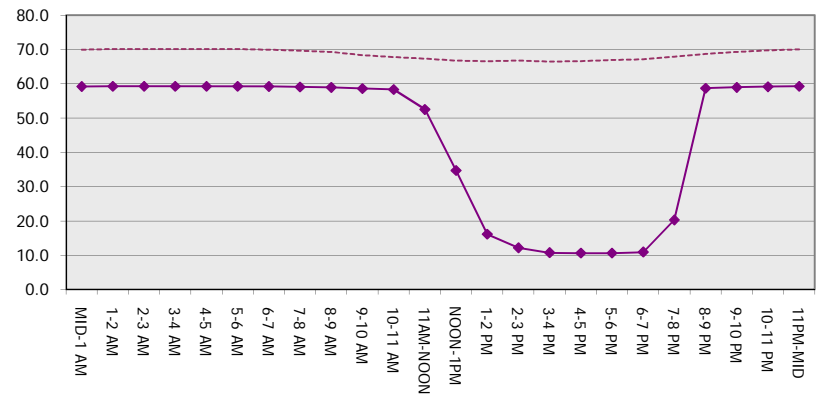
**Main Route Average Delay Per Vehicle (Minutes)**



**Main Route - Average Queue Length (Vehicles)**



**Main Route - Average Speed (MPH)**



<b>USH 45: STH 145 TO CTH E (MILWAUKEE COUNTY)                  CONTINUOUS (24 HOUR) CLOSURE                  NO DIVERSION ROUTE (MAX QUEUE METHOD)</b>	<b>OCTOBER</b>
	Analyzed for 2009 Construction Season

**SUMMARY OF TRAFFIC MODEL OUTPUT**

SUNDAY NORTHBOUND DIRECTION

TIME OF DAY	FLOWS AND CAPACITY IN VEH/HR							AVERAGE SPEEDS IN MPH		
	MAIN ROUTE		SITE CAPA CITY	FLOW		AV.DEL PER VEH (MINS)	AVERAGE QUEUE (VEH)	MAIN ROUTE		SITE
	DEMAND FLOW	PCT HEAVY		MAIN ROUTE	'DIVER TED'			WITHOUT WORK ZONE	WITH WORK ZONE	
MID-1 AM	783	0.0	3000	783	0	0.35	0	69.7	59.2	49.7
1-2 AM	452	0.0	3000	452	0	0.36	0	70.2	59.3	49.7
2-3 AM	404	0.0	3000	404	0	0.36	0	70.2	59.3	49.7
3-4 AM	258	0.0	3000	258	0	0.36	0	70.2	59.3	49.7
4-5 AM	207	0.0	3000	207	0	0.36	0	70.2	59.3	49.7
5-6 AM	360	0.0	3000	360	0	0.36	0	70.2	59.3	49.7
6-7 AM	558	0.0	3000	558	0	0.36	0	70.0	59.2	49.7
7-8 AM	908	0.0	3000	908	0	0.35	0	69.6	59.1	49.7
8-9 AM	1291	0.0	3000	1291	0	0.35	0	69.1	58.9	49.7
9-10 AM	1773	0.0	3000	1773	0	0.34	0	68.6	58.7	49.7
10-11 AM	2273	0.0	3000	2273	0	0.33	0	67.9	58.4	49.7
11AM-NOON	2665	0.0	2999	2665	0	0.51	0	67.4	54.0	43.2
NOON-1PM	2986	0.0	2999	2986	0	0.75	1	67.0	49.2	37.6
1-2 PM	2893	0.0	3000	2893	0	0.66	0	67.1	50.7	38.9
2-3 PM	2817	0.0	2999	2817	0	0.61	0	67.3	51.9	40.2
3-4 PM	3048	0.0	2999	3048	0	1.11	21	66.9	43.5	37.3
4-5 PM	2894	0.0	2999	2894	0	0.97	18	67.1	45.5	38.6
5-6 PM	2636	0.0	3000	2636	0	0.49	0	67.4	54.4	43.7
6-7 PM	2239	0.0	3000	2239	0	0.33	0	67.9	58.4	49.7
7-8 PM	1856	0.0	3000	1856	0	0.34	0	68.4	58.6	49.7
8-9 PM	1376	0.0	3000	1376	0	0.34	0	69.0	58.9	49.7
9-10 PM	1102	0.0	3000	1102	0	0.35	0	69.4	59.0	49.7
10-11 PM	1017	0.0	3000	1017	0	0.35	0	69.5	59.1	49.7
11PM-MID	609	0.0	3000	609	0	0.36	0	70.0	59.2	49.7

*----- SITE BREAKDOWN DELAYS -----*	
BREAKDOWN DURATION (MINS)	0
RANGE OF QUEUE DELAY - MIN (VEH-H) MAX	0.0
AV BREAKDOWNS PER DAY	0.00
AV QUEUE DELAY/DAY (VEH-H)	0.0
AV TOTAL DELAY/DAY (VEH-H)	0.0

*----- SITE ACCIDENT DELAYS -----*	
BREAKDOWN DURATION (MINS)	0
RANGE OF QUEUE DELAY - MIN (VEH-H) MAX	0
AV BREAKDOWNS PER DAY	0
AV QUEUE DELAY/DAY (VEH-H)	0
AV TOTAL DELAY/DAY (VEH-H)	0

AVERAGE ACCIDENT NUMBERS (PIA/DAY)	
MAIN ROUTE WITHOUT WORKS	0.0137
MAIN ROUTE WITH WORKS	0.0112
'DIVERSION'	0.0000

PIA: Personal Injury Accidents

ECONOMIC IMPACT ON ROAD USERS	
ROAD USER COSTS PER DAY	\$5,859
CONGESTED HOURS PER DAY*	0

\*Delays Exceeding User-Specified Maximum

**USH 45: STH 145 TO CTH E (MILWAUKEE COUNTY)  
CONTINUOUS (24 HOUR) CLOSURE  
NO DIVERSION ROUTE (MAX QUEUE METHOD)**

**OCTOBER**

Analyzed for 2009  
Construction Season

**GRAPHICAL REPRESENTATION OF TRAFFIC MODEL INPUT AND OUTPUT**  
**SUNDAY NORTHBOUND DIRECTION**

