

USH 45: STH 145 TO CTH E (MILWAUKEE COUNTY) CONTINUOUS (24 HOUR) 2 LANE CLOSURE NO DIVERSION ROUTE (MAX QUEUE METHOD)	OCTOBER Analyzed for 2009 Construction Season
--	--

SUMMARY OF TRAFFIC MODEL OUTPUT

SATURDAY SOUTHBOUND DIRECTION

TIME OF DAY	FLOWS AND CAPACITY IN VEH/HR							AVERAGE SPEEDS IN MPH			
	MAIN ROUTE		SITE CAPA CITY	FLOW		AV.DEL PER VEH (MINS)	AVERAGE QUEUE (VEH)	MAIN ROUTE		SITE	
	DEMAND FLOW	PCT HEAVY		MAIN ROUTE	'DIVER TED'			WITHOUT WORK ZONE	WITH WORK ZONE		
MID-1 AM	548	0.0	1500	548	0	0.54	0	70.0	55.0	43.3	
1-2 AM	329	0.0	1500	329	0	0.51	0	70.2	55.6	44.2	
2-3 AM	251	0.0	1500	251	0	0.50	0	70.2	55.9	44.5	
3-4 AM	280	0.0	1500	280	0	0.51	0	70.2	55.8	44.3	
4-5 AM	380	0.0	1500	380	0	0.52	0	70.2	55.5	44.0	
5-6 AM	686	0.0	1500	686	0	0.55	0	69.9	54.6	42.8	
6-7 AM	1193	0.0	1499	1193	0	0.73	0	69.2	50.7	38.1	
7-8 AM	1797	0.0	1499	1797	0	4.23	112	68.5	22.0	30.8	
8-9 AM	2362	0.0	1499	1576	786	16.34+	400	67.8	8.0	30.8	
9-10 AM	2800	0.0	1500	1511	1289	16.66+	408	67.3	7.9	30.8	
10-11 AM	3245	0.0	1500	1503	1742	16.72+	410	66.7	7.9	30.8	
11AM-NOON	3277	0.0	1500	1501	1775	16.72+	410	66.6	7.9	30.8	
NOON-1PM	3533	0.0	1500	1500	2033	16.72+	411	66.3	7.9	30.8	
1-2 PM	3203	0.0	1500	1503	1700	16.72+	410	66.8	7.9	30.8	
2-3 PM	3320	0.0	1499	1500	1820	16.73+	411	66.6	7.9	30.8	
3-4 PM	3348	0.0	1500	1500	1848	16.73+	411	66.6	7.9	30.8	
4-5 PM	3201	0.0	1500	1503	1699	16.72+	410	66.8	7.9	30.8	
5-6 PM	2971	0.0	1500	1505	1465	16.69+	409	67.1	7.9	30.8	
6-7 PM	2529	0.0	1500	1501	1028	16.62+	407	67.6	7.9	30.8	
7-8 PM	2036	0.0	1500	1500	536	16.62+	406	68.2	7.9	30.8	
8-9 PM	1611	0.0	1500	1500	111	16.63+	406	68.7	7.9	30.8	
9-10 PM	1466	0.0	1500	1458	8	16.15+	394	68.9	8.1	30.8	
10-11 PM	1165	0.0	1499	1165	0	7.66	210	69.3	14.3	33.4	
11PM-MID	904	0.0	1500	904	0	0.60	0	69.6	53.5	42.0	

+ INDICATES QUEUEING EXCEEDS USER-SPECIFIED MAXIMUM LIMIT

----- SITE BREAKDOWN DELAYS -----	
BREAKDOWN DURATION (MINS)	0
RANGE OF QUEUE DELAY - MIN (VEH-H) MAX	0.0
AV BREAKDOWNS PER DAY	0.00
AV QUEUE DELAY/DAY (VEH-H)	0.0
AV TOTAL DELAY/DAY (VEH-H)	0.0

----- SITE ACCIDENT DELAYS -----	
BREAKDOWN DURATION (MINS)	0
RANGE OF QUEUE DELAY - MIN (VEH-H) MAX	0
AV BREAKDOWNS PER DAY	0
AV QUEUE DELAY/DAY (VEH-H)	0
AV TOTAL DELAY/DAY (VEH-H)	0

AVERAGE ACCIDENT NUMBERS (PIA/DAY)	
MAIN ROUTE WITHOUT WORKS	0.0170
MAIN ROUTE WITH WORKS	0.0086
'DIVERSION'	0.0151
<small>PIA: Personal Injury Accidents</small>	
IMPACTS ON ROAD USERS	
ROAD USER COSTS PER DAY	\$183,795
CONGESTED HOURS PER DAY*	14

*Delays Exceeding User-Specified Maximum

**USH 45: STH 145 TO CTH E (MILWAUKEE COUNTY)
CONTINUOUS (24 HOUR) 2 LANE CLOSURE
NO DIVERSION ROUTE (MAX QUEUE METHOD)**

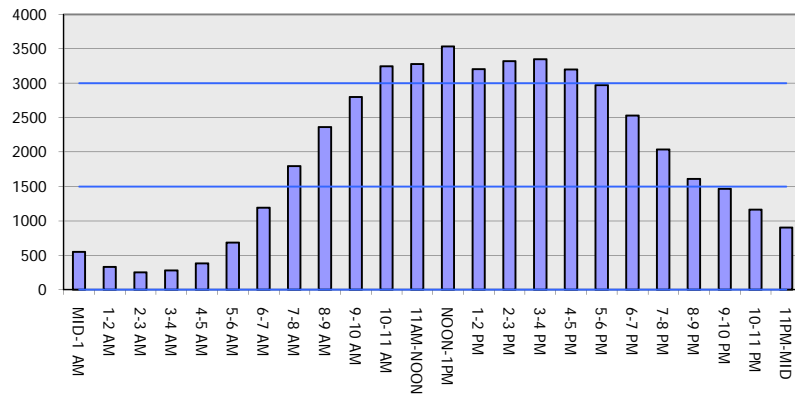
OCTOBER

Analyzed for 2009
Construction Season

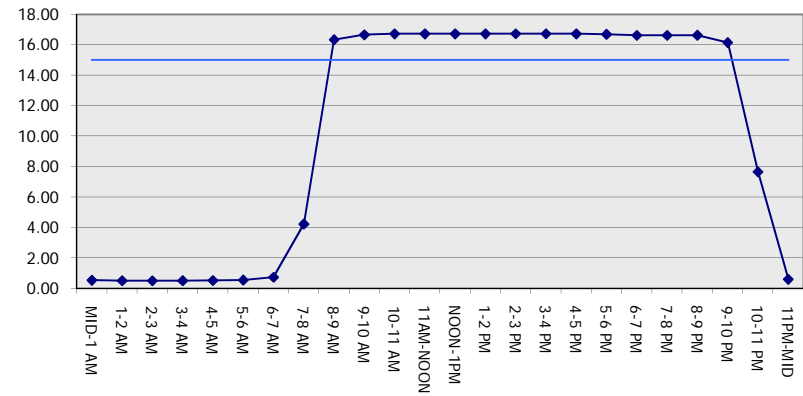
GRAPHICAL REPRESENTATION OF TRAFFIC MODEL INPUT AND OUTPUT

SATURDAY SOUTHBOUND DIRECTION

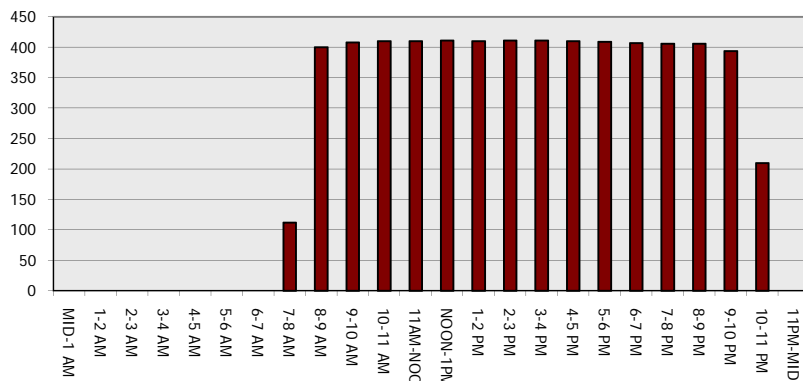
Main Route - Traffic Demand (Vehicles Per Hour)



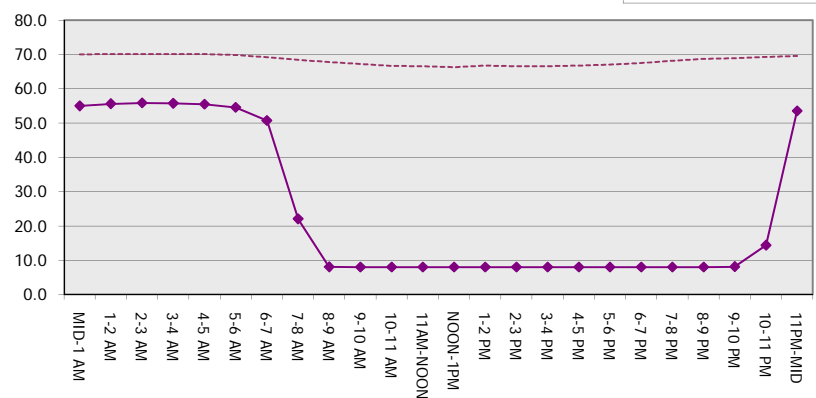
Main Route Average Delay Per Vehicle (Minutes)



Main Route - Average Queue Length (Vehicles)



Main Route - Average Speed (MPH)



USH 45: STH 145 TO CTH E (MILWAUKEE COUNTY) CONTINUOUS (24 HOUR) 2 LANE CLOSURE NO DIVERSION ROUTE (MAX QUEUE METHOD)	OCTOBER
	Analyzed for 2009 Construction Season

SUMMARY OF TRAFFIC MODEL OUTPUT

SATURDAY NORTHBOUND DIRECTION

TIME OF DAY	FLOWS AND CAPACITY IN VEH/HR							AVERAGE SPEEDS IN MPH			
	MAIN ROUTE		SITE CAPA CITY	FLOW		AV.DEL PER VEH (MINS)	AVERAGE QUEUE (VEH)	MAIN ROUTE		SITE	
	DEMAND FLOW	PCT HEAVY		MAIN ROUTE	'DIVER TED'			WITHOUT WORK ZONE	WITH WORK ZONE		
MID-1 AM	757	0.0	1500	757	0	0.60	1	69.8	53.5	42.5	
1-2 AM	450	0.0	1500	450	0	0.53	0	70.2	55.3	43.7	
2-3 AM	394	0.0	1500	394	0	0.52	0	70.2	55.5	43.9	
3-4 AM	334	0.0	1500	334	0	0.51	0	70.2	55.6	44.2	
4-5 AM	429	0.0	1500	429	0	0.53	0	70.2	55.4	43.8	
5-6 AM	774	0.0	1500	774	0	0.56	0	69.8	54.3	42.5	
6-7 AM	1202	0.0	1499	1202	0	0.72	0	69.2	50.8	38.1	
7-8 AM	1735	0.0	1499	1735	0	3.44	83	68.6	25.3	30.8	
8-9 AM	2295	0.0	1500	1734	560	15.78+	388	67.9	8.3	30.8	
9-10 AM	2653	0.0	1499	1487	1165	16.67+	408	67.4	7.9	30.8	
10-11 AM	3046	0.0	1499	1487	1559	16.69+	409	66.9	7.9	30.8	
11AM-NOON	3367	0.0	1499	1498	1869	16.72+	410	66.6	7.9	30.8	
NOON-1PM	3511	0.0	1500	1500	2011	16.72+	411	66.4	7.9	30.8	
1-2 PM	3424	0.0	1500	1500	1924	16.72+	411	66.5	7.9	30.8	
2-3 PM	3441	0.0	1499	1500	1941	16.72+	411	66.4	7.9	30.8	
3-4 PM	3490	0.0	1500	1500	1990	16.72+	411	66.4	7.9	30.8	
4-5 PM	3267	0.0	1499	1496	1772	16.71+	410	66.7	7.9	30.8	
5-6 PM	2949	0.0	1499	1491	1459	16.69+	409	67.1	7.9	30.8	
6-7 PM	2574	0.0	1499	1497	1077	16.62+	407	67.6	7.9	30.8	
7-8 PM	2176	0.0	1500	1499	677	16.62+	406	68.0	7.9	30.8	
8-9 PM	1875	0.0	1499	1499	375	16.62+	406	68.4	7.9	30.8	
9-10 PM	1764	0.0	1500	1499	265	16.62+	406	68.6	7.9	30.8	
10-11 PM	1558	0.0	1500	1467	91	16.49+	403	68.8	8.0	30.8	
11PM-MID	1157	0.0	1499	1157	0	8.89	241	69.3	12.8	33.5	

+ INDICATES QUEUEING EXCEEDS USER-SPECIFIED MAXIMUM LIMIT

----- SITE BREAKDOWN DELAYS -----	
BREAKDOWN DURATION (MINS)	0
RANGE OF QUEUE DELAY - MIN (VEH-H) MAX	0.0
AV BREAKDOWNS PER DAY	0.00
AV QUEUE DELAY/DAY (VEH-H)	0.0
AV TOTAL DELAY/DAY (VEH-H)	0.0

----- SITE ACCIDENT DELAYS -----	
BREAKDOWN DURATION (MINS)	0
RANGE OF QUEUE DELAY - MIN (VEH-H) MAX	0
AV BREAKDOWNS PER DAY	0
AV QUEUE DELAY/DAY (VEH-H)	0
AV TOTAL DELAY/DAY (VEH-H)	0

AVERAGE ACCIDENT NUMBERS (PIA/DAY)	
MAIN ROUTE WITHOUT WORKS	0.0178
MAIN ROUTE WITH WORKS	0.0090
'DIVERSION'	0.0159

PIA: Personal Injury Accidents

ECONOMIC IMPACT ON ROAD USERS	
ROAD USER COSTS PER DAY	\$194,822
CONGESTED HOURS PER DAY*	15

*Delays Exceeding User-Specified Maximum

**USH 45: STH 145 TO CTH E (MILWAUKEE COUNTY)
CONTINUOUS (24 HOUR) 2 LANE CLOSURE
NO DIVERSION ROUTE (MAX QUEUE METHOD)**

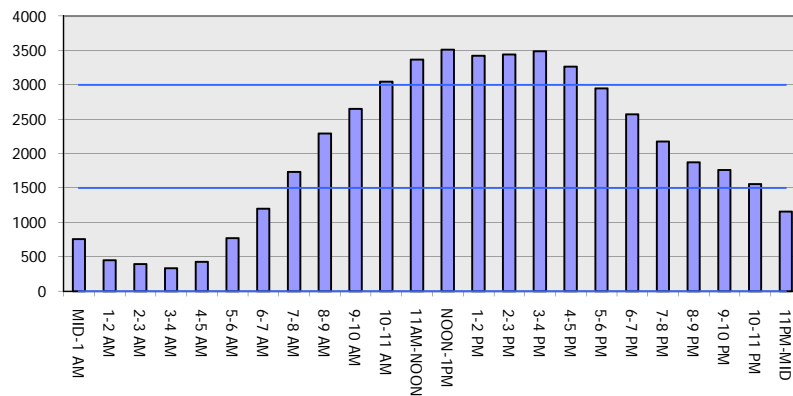
OCTOBER

Analyzed for 2009
Construction Season

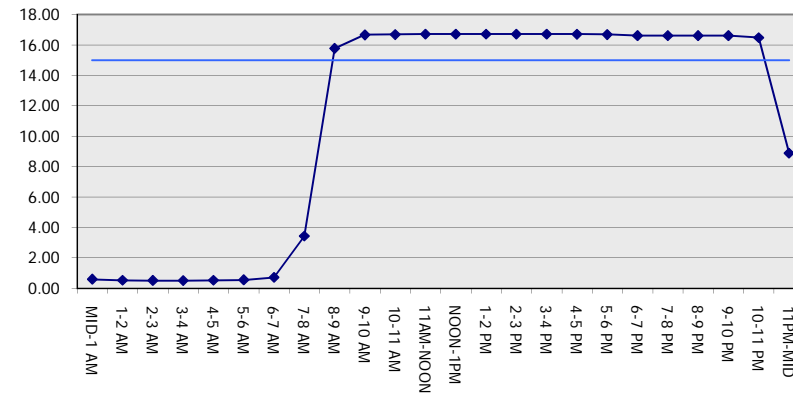
GRAPHICAL REPRESENTATION OF TRAFFIC MODEL INPUT AND OUTPUT

SATURDAY NORTHBOUND DIRECTION

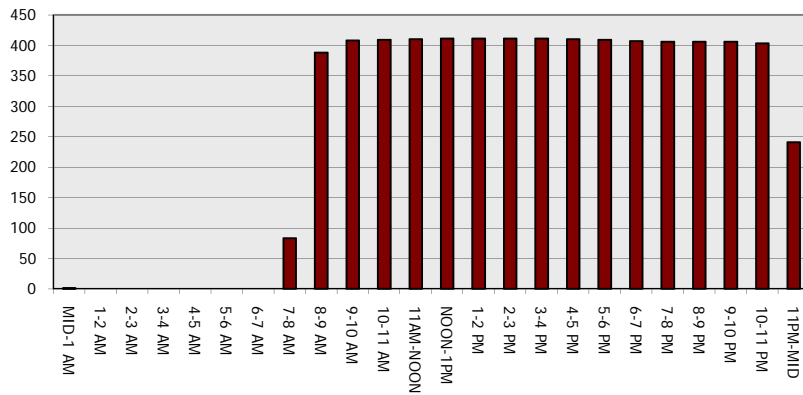
Main Route - Traffic Demand (Vehicles Per Hour)



Main Route Average Delay Per Vehicle (Minutes)



Main Route - Average Queue Length (Vehicles)



Main Route - Average Speed (MPH)

