

USH 45: STH 145 TO CTH E (MILWAUKEE COUNTY) CONTINUOUS (24 HOUR) 2 LANE CLOSURE NO DIVERSION ROUTE (MAX QUEUE METHOD)	OCTOBER
	Analyzed for 2009 Construction Season

SUMMARY OF TRAFFIC MODEL OUTPUT

FRIDAY SOUTHBOUND DIRECTION

TIME OF DAY	FLOWS AND CAPACITY IN VEH/HR							AVERAGE SPEEDS IN MPH			
	MAIN ROUTE		SITE CAPA CITY	FLOW		AV.DEL PER VEH (MINS)	AVERAGE QUEUE (VEH)	MAIN ROUTE		SITE	
	DEMAND FLOW	PCT HEAVY		MAIN ROUTE	'DIVER TED'			WITHOUT WORK ZONE	WITH WORK ZONE		
MID-1 AM	390	0.0	1500	390	0	0.52	0	70.2	55.5	43.9	
1-2 AM	281	0.0	1500	281	0	0.51	0	70.2	55.8	44.3	
2-3 AM	283	0.0	1500	283	0	0.51	0	70.2	55.8	44.3	
3-4 AM	376	0.0	1500	376	0	0.52	0	70.2	55.5	44.0	
4-5 AM	738	0.0	1500	738	0	0.56	0	69.8	54.4	42.6	
5-6 AM	2034	0.0	1499	2034	0	3.98	153	68.2	23.0	30.8	
6-7 AM	4362	0.0	1500	1492	2870	16.37+	410	61.0	8.0	33.0	
7-8 AM	5340	0.0	1500	1500	3840	16.10+	411	54.4	7.9	32.8	
8-9 AM	4094	0.0	1499	1487	2607	16.45+	410	62.9	7.9	32.7	
9-10 AM	3440	0.0	1499	1483	1957	16.61+	409	66.4	7.9	31.7	
10-11 AM	3454	0.0	1499	1484	1969	16.66+	409	66.4	7.9	30.9	
11AM-NOON	3594	0.0	1499	1492	2102	16.69+	410	66.3	7.9	30.8	
NOON-1PM	3700	0.0	1499	1497	2203	16.68+	410	65.6	7.9	30.8	
1-2 PM	3470	0.0	1499	1492	1978	16.70+	410	66.4	7.9	30.8	
2-3 PM	4112	0.0	1499	1500	2612	16.59+	411	62.8	7.9	30.8	
3-4 PM	4318	0.0	1500	1500	2818	16.54+	411	61.4	7.9	30.8	
4-5 PM	4506	0.0	1500	1500	3006	16.48+	411	60.1	7.9	30.8	
5-6 PM	4173	0.0	1500	1500	2673	16.58+	411	62.3	7.9	30.8	
6-7 PM	3246	0.0	1499	1489	1756	16.69+	410	66.7	7.9	30.8	
7-8 PM	2197	0.0	1499	1497	700	16.62+	407	68.0	7.9	30.8	
8-9 PM	1555	0.0	1499	1429	126	16.02+	390	68.8	8.1	30.8	
9-10 PM	1499	0.0	1500	1499	0	15.89+	387	68.9	8.2	30.8	
10-11 PM	1233	0.0	1499	1233	0	10.17	256	69.2	11.4	31.7	
11PM-MID	1077	0.0	1500	1077	0	1.09	18	69.4	44.8	39.4	

+ INDICATES QUEUEING EXCEEDS USER-SPECIFIED MAXIMUM LIMIT

----- SITE BREAKDOWN DELAYS -----	
BREAKDOWN DURATION (MINS)	0
RANGE OF QUEUE DELAY - MIN (VEH-H) MAX	0.0
AV BREAKDOWNS PER DAY	0.00
AV QUEUE DELAY/DAY (VEH-H)	0.0
AV TOTAL DELAY/DAY (VEH-H)	0.0

----- SITE ACCIDENT DELAYS -----	
BREAKDOWN DURATION (MINS)	0
RANGE OF QUEUE DELAY - MIN (VEH-H) MAX	0
AV BREAKDOWNS PER DAY	0
AV QUEUE DELAY/DAY (VEH-H)	0
AV TOTAL DELAY/DAY (VEH-H)	0

AVERAGE ACCIDENT NUMBERS (PIA/DAY)	
MAIN ROUTE WITHOUT WORKS	0.0232
MAIN ROUTE WITH WORKS	0.0091
'DIVERSION'	0.0281
<small>PIA: Personal Injury Accidents</small>	
IMPACTS ON ROAD USERS	
ROAD USER COSTS PER DAY	\$215,522
CONGESTED HOURS PER DAY*	16

*Delays Exceeding User-Specified Maximum

**USH 45: STH 145 TO CTH E (MILWAUKEE COUNTY)
CONTINUOUS (24 HOUR) 2 LANE CLOSURE
NO DIVERSION ROUTE (MAX QUEUE METHOD)**

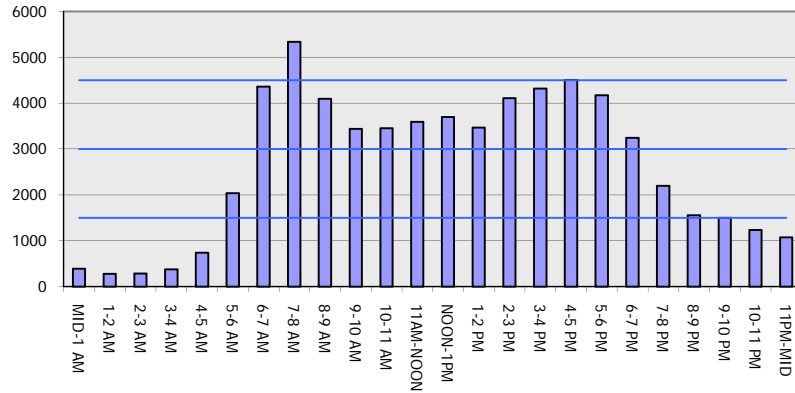
OCTOBER

Analyzed for 2009
Construction Season

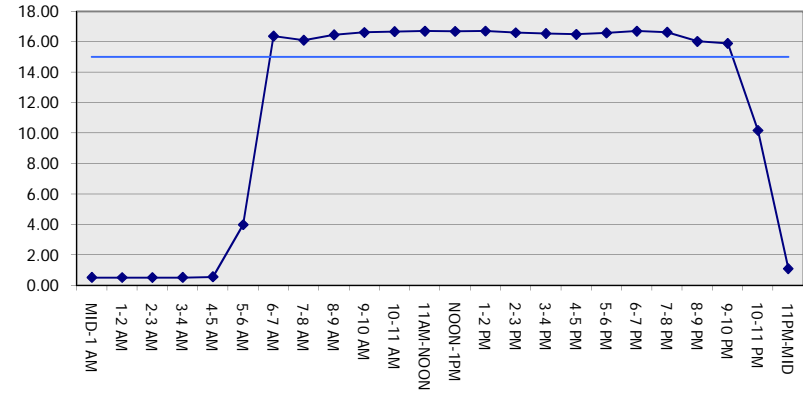
GRAPHICAL REPRESENTATION OF TRAFFIC MODEL INPUT AND OUTPUT

FRIDAY SOUTHBOUND DIRECTION

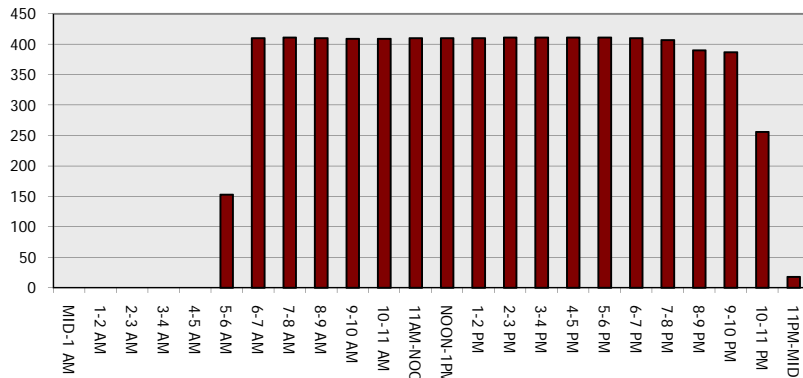
Main Route - Traffic Demand (Vehicles Per Hour)



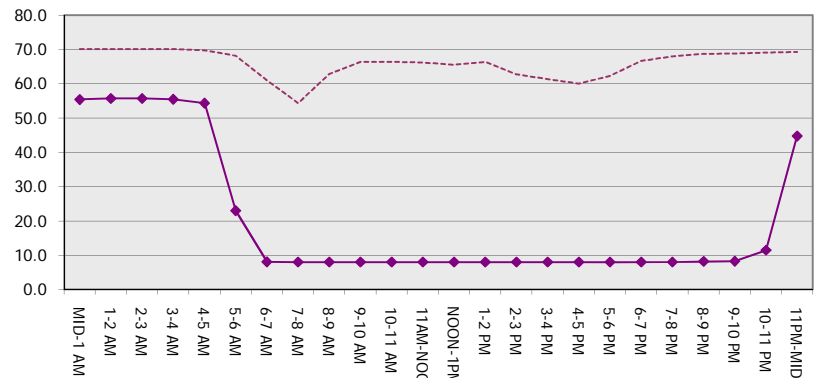
Main Route Average Delay Per Vehicle (Minutes)



Main Route - Average Queue Length (Vehicles)



Main Route - Average Speed (MPH)



USH 45: STH 145 TO CTH E (MILWAUKEE COUNTY) CONTINUOUS (24 HOUR) 2 LANE CLOSURE NO DIVERSION ROUTE (MAX QUEUE METHOD)	OCTOBER
	Analyzed for 2009 Construction Season

SUMMARY OF TRAFFIC MODEL OUTPUT

FRIDAY NORTHBOUND DIRECTION

TIME OF DAY	FLOWS AND CAPACITY IN VEH/HR							AVERAGE SPEEDS IN MPH			
	MAIN ROUTE		SITE CAPA CITY	FLOW		AV.DEL PER VEH (MINS)	AVERAGE QUEUE (VEH)	MAIN ROUTE		SITE	
	DEMAND FLOW	PCT HEAVY		MAIN ROUTE	'DIVER TED'			WITHOUT WORK ZONE	WITH WORK ZONE		
MID-1 AM	551	0.0	1500	551	0	0.69	7	70.0	51.9	43.3	
1-2 AM	355	0.0	1500	355	0	0.52	0	70.2	55.6	44.1	
2-3 AM	348	0.0	1500	348	0	0.51	0	70.2	55.6	44.1	
3-4 AM	399	0.0	1500	399	0	0.52	0	70.2	55.5	43.9	
4-5 AM	722	0.0	1500	722	0	0.56	0	69.9	54.5	42.7	
5-6 AM	1953	0.0	1499	1953	0	4.02	137	68.3	22.8	30.8	
6-7 AM	3566	0.0	1499	1495	2071	16.70+	410	66.3	7.9	30.8	
7-8 AM	4793	0.0	1500	1500	3293	16.40+	411	58.1	7.9	30.8	
8-9 AM	3894	0.0	1500	1500	2394	16.65+	411	64.3	7.9	30.8	
9-10 AM	3189	0.0	1499	1491	1698	16.70+	410	66.8	7.9	30.8	
10-11 AM	3234	0.0	1499	1495	1739	16.71+	410	66.7	7.9	30.8	
11AM-NOON	3572	0.0	1499	1500	2072	16.72+	411	66.3	7.9	30.8	
NOON-1PM	3977	0.0	1500	1500	2477	16.63+	411	63.7	7.9	30.8	
1-2 PM	4195	0.0	1500	1500	2695	16.57+	411	62.2	7.9	30.8	
2-3 PM	4880	0.0	1500	1500	3380	16.37+	411	57.5	7.9	30.8	
3-4 PM	5704	0.0	1500	1500	4204	16.09+	411	51.9	7.9	30.8	
4-5 PM	6294	0.0	1500	1500	4794	15.85+	411	47.9	7.9	30.8	
5-6 PM	5737	0.0	1500	1500	4237	16.08+	411	51.7	7.9	30.8	
6-7 PM	4006	0.0	1500	1500	2506	16.62+	411	63.5	7.9	30.8	
7-8 PM	2702	0.0	1499	1494	1208	16.65+	408	67.4	7.9	30.8	
8-9 PM	2215	0.0	1500	1499	716	16.62+	407	68.0	7.9	30.8	
9-10 PM	2209	0.0	1499	1499	710	16.62+	407	68.0	7.9	30.8	
10-11 PM	1720	0.0	1500	1481	239	16.55+	404	68.6	8.0	30.8	
11PM-MID	1205	0.0	1499	1205	0	11.50+	296	69.2	10.4	32.7	

+ INDICATES QUEUEING EXCEEDS USER-SPECIFIED MAXIMUM LIMIT

BREAKDOWN DURATION (MINS)	0
RANGE OF QUEUE DELAY - MIN (VEH-H) MAX	0.0
AV BREAKDOWNS PER DAY	0.00
AV QUEUE DELAY/DAY (VEH-H)	0.0
AV TOTAL DELAY/DAY (VEH-H)	0.0

BREAKDOWN DURATION (MINS)	0
RANGE OF QUEUE DELAY - MIN (VEH-H) MAX	0
AV BREAKDOWNS PER DAY	0
AV QUEUE DELAY/DAY (VEH-H)	0
AV TOTAL DELAY/DAY (VEH-H)	0

MAIN ROUTE WITHOUT WORKS	0.0261
MAIN ROUTE WITH WORKS	0.0093
'DIVERSION'	0.0343

PIA: Personal Injury Accidents

ROAD USER COSTS PER DAY	\$247,140
CONGESTED HOURS PER DAY*	18

*Delays Exceeding User-Specified Maximum

**USH 45: STH 145 TO CTH E (MILWAUKEE COUNTY)
CONTINUOUS (24 HOUR) 2 LANE CLOSURE
NO DIVERSION ROUTE (MAX QUEUE METHOD)**

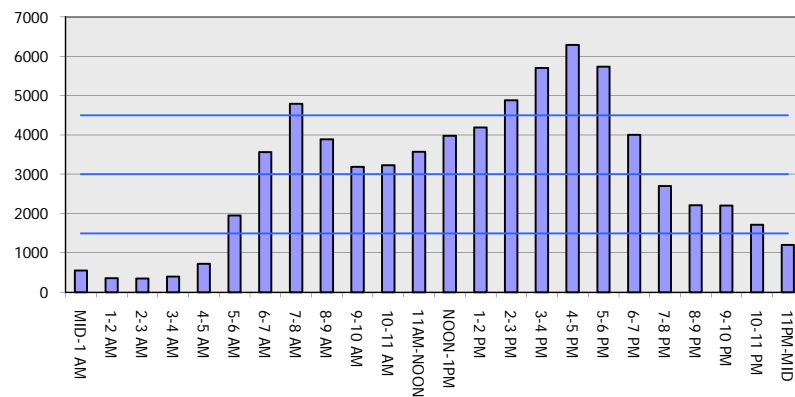
OCTOBER

Analyzed for 2009
Construction Season

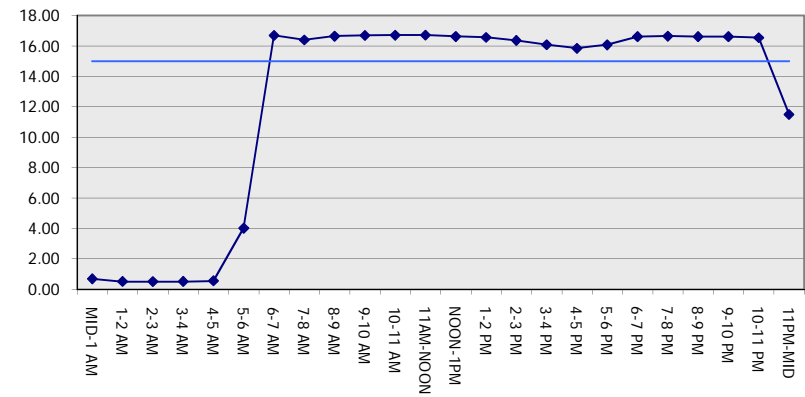
GRAPHICAL REPRESENTATION OF TRAFFIC MODEL INPUT AND OUTPUT

FRIDAY NORTHBOUND DIRECTION

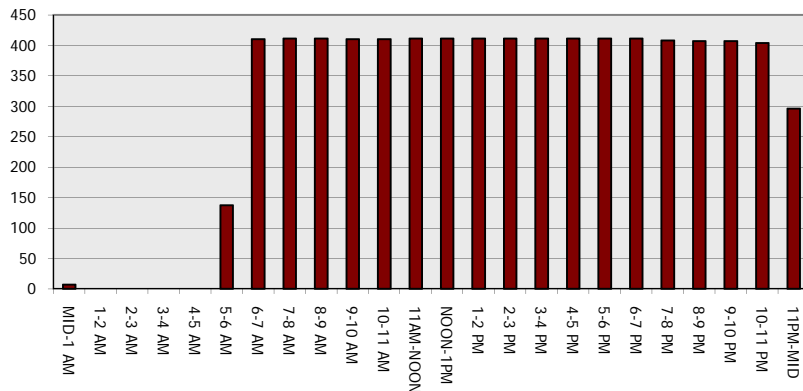
Main Route - Traffic Demand (Vehicles Per Hour)



Main Route Average Delay Per Vehicle (Minutes)



Main Route - Average Queue Length (Vehicles)



Main Route - Average Speed (MPH)

