

**USH 45: STH 190 TO NORTH AVE (MILWAUKEE COUNTY)
CONTINUOUS (24 HOUR) CLOSURE
NO DIVERSION ROUTE (MAX QUEUE METHOD)**

OCTOBER
Analyzed for 2009
Construction Season

SUMMARY OF TRAFFIC MODEL OUTPUT
FRIDAY SOUTHBOUND DIRECTION

TIME OF DAY	FLOWS AND CAPACITY IN VEH/HR						AVERAGE SPEEDS IN MPH			
	MAIN ROUTE		SITE CAPA CITY	FLOW		AV.DEL PER VEH (MINS)	AVERAGE QUEUE (VEH)	MAIN ROUTE		SITE
	DEMAND FLOW	PCT HEAVY		MAIN ROUTE	'DIVER TED'			WITHOUT WORK ZONE	WITH WORK ZONE	
MID-1 AM	729	0.0	3000	729	0	0.35	0	69.8	58.4	49.7
1-2 AM	482	0.0	3000	482	0	0.36	0	70.1	58.4	49.7
2-3 AM	425	0.0	3000	425	0	0.36	0	70.2	58.5	49.7
3-4 AM	496	0.0	3000	496	0	0.36	0	70.1	58.4	49.7
4-5 AM	816	0.0	3000	816	0	0.35	0	69.7	58.3	49.7
5-6 AM	2264	0.0	2999	2264	0	0.45	0	67.9	54.5	45.3
6-7 AM	4972	0.0	2999	3848	1124	11.23+	658	56.9	12.2	37.3
7-8 AM	5772	0.0	2999	3000	2772	17.07+	953	51.4	10.0	37.3
8-9 AM	5057	0.0	3000	3061	1996	17.27+	944	56.3	10.0	37.3
9-10 AM	4459	0.0	3000	3001	1458	17.28+	930	60.4	10.1	37.3
10-11 AM	3426	0.0	3000	2990	436	16.84+	888	66.4	10.2	37.3
11AM-NOON	4675	0.0	2999	3037	1638	17.38+	941	58.9	10.1	37.3
NOON-1PM	4902	0.0	3000	3000	1902	17.50+	953	57.4	10.0	37.3
1-2 PM	5013	0.0	3000	3000	2013	17.45+	953	56.6	10.0	37.3
2-3 PM	5676	0.0	3000	3000	2676	17.13+	953	52.1	10.0	37.3
3-4 PM	4722	0.0	3000	3010	1712	17.51+	949	58.6	10.0	37.3
4-5 PM	4558	0.0	3000	2991	1567	17.52+	946	59.7	10.0	37.3
5-6 PM	4318	0.0	3000	2974	1344	17.15+	920	61.4	10.1	37.3
6-7 PM	4201	0.0	3000	2987	1214	16.97+	908	62.2	10.2	37.3
7-8 PM	3405	0.0	3000	2995	410	16.83+	888	66.5	10.2	37.3
8-9 PM	2554	0.0	2999	2554	0	13.30+	701	67.6	11.3	37.3
9-10 PM	2452	0.0	3000	2452	0	2.87	204	67.7	27.2	42.6
10-11 PM	1865	0.0	3000	1865	0	0.34	0	68.4	57.8	49.7
11PM-MID	1562	0.0	3000	1562	0	0.34	0	68.8	58.0	49.7

+ INDICATES QUEUEING EXCEEDS USER-SPECIFIED MAXIMUM LIMIT

----- SITE BREAKDOWN DELAYS -----	
BREAKDOWN DURATION (MINS)	0
RANGE OF QUEUE DELAY - MIN (VEH-H) MAX	0.0
AV BREAKDOWNS PER DAY	0.00
AV QUEUE DELAY/DAY (VEH-H)	0.0
AV TOTAL DELAY/DAY (VEH-H)	0.0

----- SITE ACCIDENT DELAYS -----	
BREAKDOWN DURATION (MINS)	0
RANGE OF QUEUE DELAY - MIN (VEH-H) MAX	0
AV BREAKDOWNS PER DAY	0
AV QUEUE DELAY/DAY (VEH-H)	0
AV TOTAL DELAY/DAY (VEH-H)	0

AVERAGE ACCIDENT NUMBERS (PIA/DAY)	
MAIN ROUTE WITHOUT WORKS	0.0263
MAIN ROUTE WITH WORKS	0.0152
'DIVERSION'	0.0172
PIA: Personal Injury Accidents	
IMPACTS ON ROAD USERS	
ROAD USER COSTS PER DAY	\$255,275
CONGESTED HOURS PER DAY*	15

*Delays Exceeding User-Specified Maximum

**USH 45: STH 190 TO NORTH AVE (MILWAUKEE COUNTY)
CONTINUOUS (24 HOUR) CLOSURE
NO DIVERSION ROUTE (MAX QUEUE METHOD)**

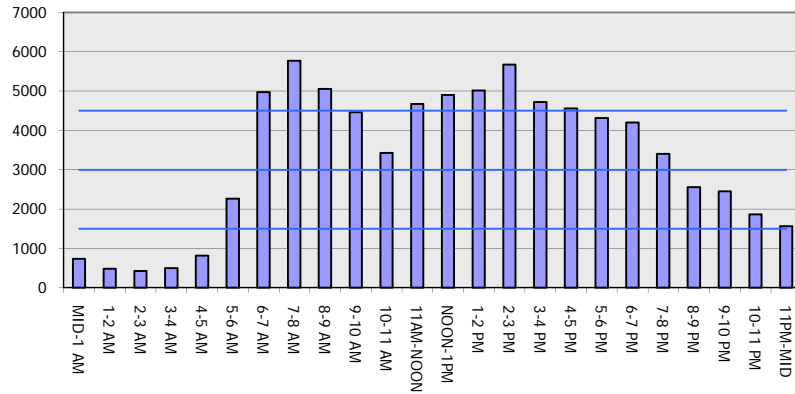
OCTOBER

Analyzed for 2009
Construction Season

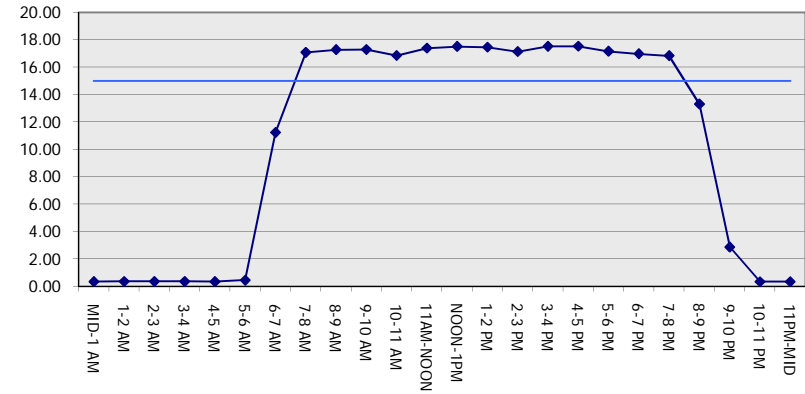
GRAPHICAL REPRESENTATION OF TRAFFIC MODEL INPUT AND OUTPUT

FRIDAY SOUTHBOUND DIRECTION

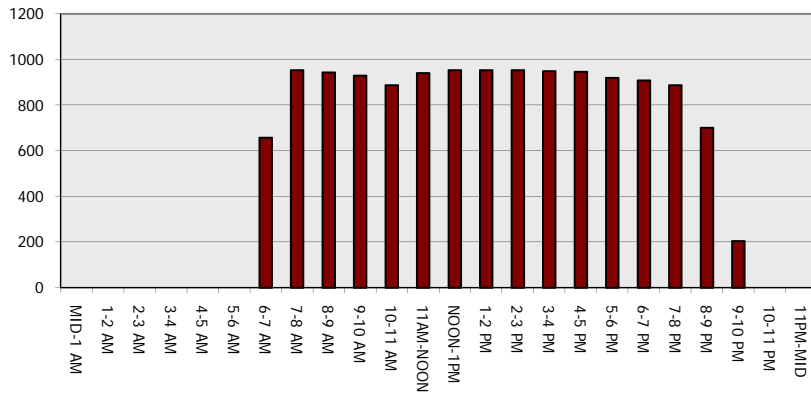
Main Route - Traffic Demand (Vehicles Per Hour)



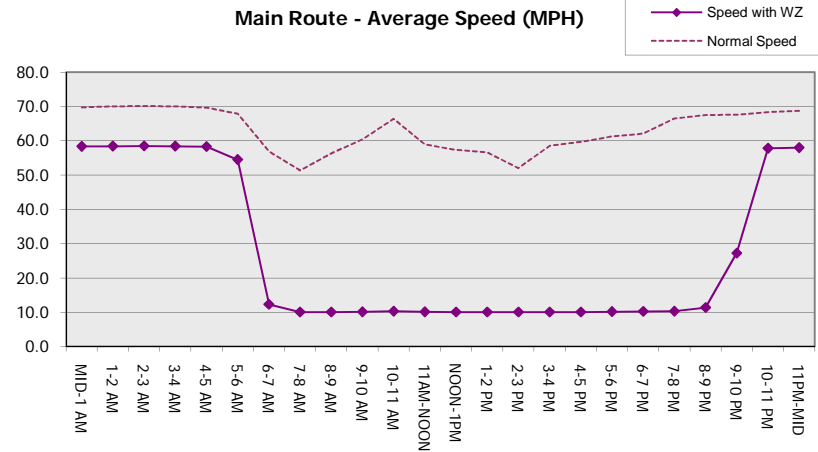
Main Route Average Delay Per Vehicle (Minutes)



Main Route - Average Queue Length (Vehicles)



Main Route - Average Speed (MPH)



USH 45: STH 190 TO NORTH AVE (MILWAUKEE COUNTY) CONTINUOUS (24 HOUR) CLOSURE NO DIVERSION ROUTE (MAX QUEUE METHOD)	OCTOBER
	Analyzed for 2009 Construction Season

SUMMARY OF TRAFFIC MODEL OUTPUT

FRIDAY NORTHBOUND DIRECTION

TIME OF DAY	FLOWS AND CAPACITY IN VEH/HR							AVERAGE SPEEDS IN MPH		
	MAIN ROUTE		SITE CAPA CITY	FLOW		AV.DEL PER VEH (MINS)	AVERAGE QUEUE (VEH)	MAIN ROUTE		SITE
	DEMAND FLOW	PCT HEAVY		MAIN ROUTE	'DIVER TED'			WITHOUT WORK ZONE	WITH WORK ZONE	
MID-1 AM	992	0.0	3000	992	0	0.35	0	69.5	58.2	49.7
1-2 AM	763	0.0	3000	763	0	0.35	0	69.8	58.3	49.7
2-3 AM	705	0.0	3000	705	0	0.36	0	69.9	58.4	49.7
3-4 AM	748	0.0	3000	748	0	0.35	0	69.8	58.3	49.7
4-5 AM	1311	0.0	3000	1311	0	0.35	0	69.1	58.1	49.7
5-6 AM	3150	0.0	2999	3150	0	1.44	80	66.8	37.9	40.4
6-7 AM	5295	0.0	3000	3571	1723	15.21+	855	54.7	10.6	38.3
7-8 AM	6310	0.0	2999	3000	3310	16.76+	953	47.8	10.0	37.3
8-9 AM	5149	0.0	3000	3013	2136	17.35+	951	55.7	10.0	37.3
9-10 AM	4472	0.0	3000	3005	1467	17.29+	931	60.3	10.1	37.3
10-11 AM	3629	0.0	3000	2989	640	16.85+	890	66.1	10.2	37.3
11AM-NOON	4875	0.0	2999	3038	1837	17.41+	947	57.6	10.0	37.3
NOON-1PM	5210	0.0	3000	3000	2210	17.36+	953	55.3	10.0	37.3
1-2 PM	5476	0.0	3000	3000	2476	17.23+	953	53.5	10.0	37.3
2-3 PM	6101	0.0	3000	3000	3101	16.89+	953	49.2	10.0	37.3
3-4 PM	6011	0.0	3000	3000	3011	16.94+	953	49.8	10.0	37.3
4-5 PM	6507	0.0	3000	3000	3507	16.63+	953	46.4	10.0	37.3
5-6 PM	6481	0.0	3000	3000	3481	16.65+	953	46.6	10.0	37.3
6-7 PM	4339	0.0	3000	2972	1367	17.25+	927	61.2	10.1	37.3
7-8 PM	3677	0.0	2999	2990	687	16.84+	891	65.8	10.2	37.3
8-9 PM	2926	0.0	2999	2890	36	16.26+	855	67.1	10.4	37.3
9-10 PM	3002	0.0	3000	3002	0	15.45+	811	67.0	10.6	37.3
10-11 PM	2354	0.0	2999	2354	0	9.13	506	67.8	13.7	40.2
11PM-MID	1885	0.0	3000	1885	0	0.47	11	68.4	54.5	49.7

+ INDICATES QUEUEING EXCEEDS USER-SPECIFIED MAXIMUM LIMIT

BREAKDOWN DURATION (MINS)	0
RANGE OF QUEUE DELAY - MIN (VEH-H) MAX	0.0
AV BREAKDOWNS PER DAY	0.00
AV QUEUE DELAY/DAY (VEH-H)	0.0
AV TOTAL DELAY/DAY (VEH-H)	0.0

BREAKDOWN DURATION (MINS)	0
RANGE OF QUEUE DELAY - MIN (VEH-H) MAX	0
AV BREAKDOWNS PER DAY	0
AV QUEUE DELAY/DAY (VEH-H)	0
AV TOTAL DELAY/DAY (VEH-H)	0

MAIN ROUTE WITHOUT WORKS	0.0305
MAIN ROUTE WITH WORKS	0.0162
'DIVERSION'	0.0240

PIA: Personal Injury Accidents

ROAD USER COSTS PER DAY	\$306,073
CONGESTED HOURS PER DAY*	16

*Delays Exceeding User-Specified Maximum

**USH 45: STH 190 TO NORTH AVE (MILWAUKEE COUNTY)
CONTINUOUS (24 HOUR) CLOSURE
NO DIVERSION ROUTE (MAX QUEUE METHOD)**

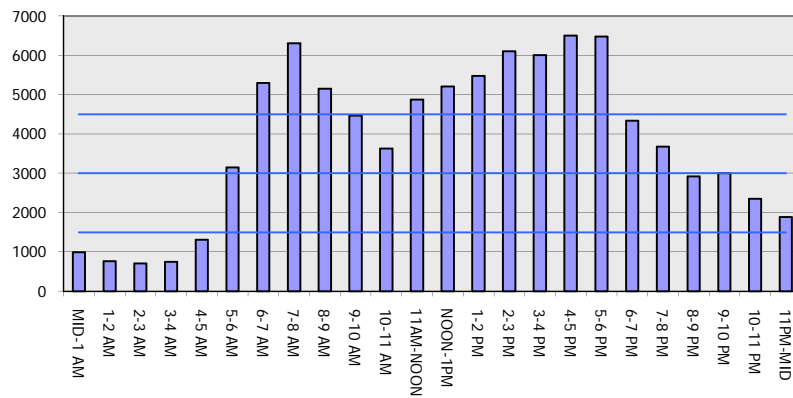
OCTOBER

Analyzed for 2009
Construction Season

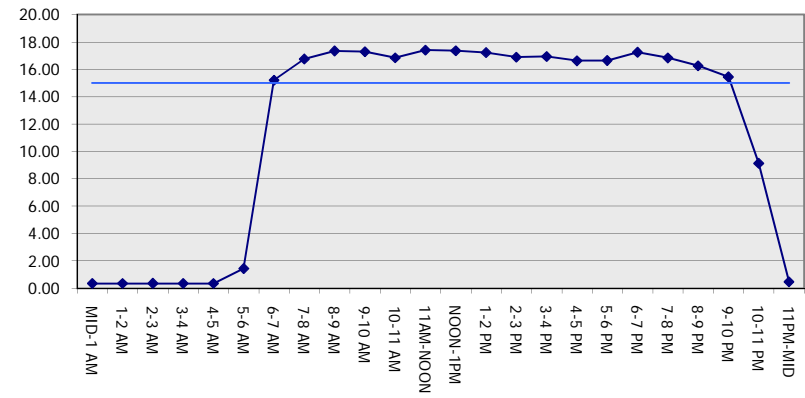
GRAPHICAL REPRESENTATION OF TRAFFIC MODEL INPUT AND OUTPUT

FRIDAY NORTHBOUND DIRECTION

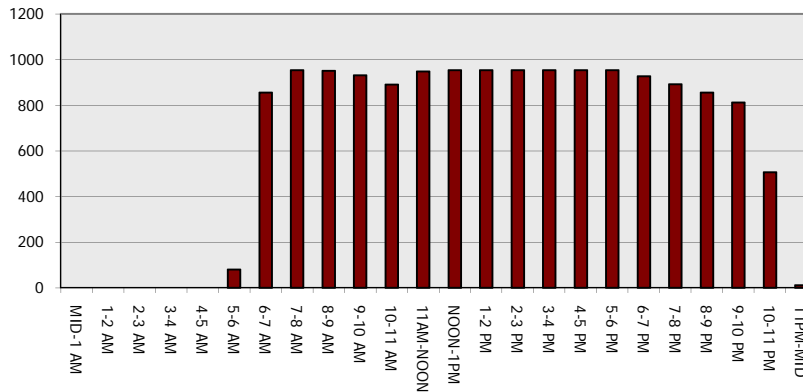
Main Route - Traffic Demand (Vehicles Per Hour)



Main Route Average Delay Per Vehicle (Minutes)



Main Route - Average Queue Length (Vehicles)



Main Route - Average Speed (MPH)

