

USH 45: STH 190 TO NORTH AVE (MILWAUKEE COUNTY) CONTINUOUS (24 HOUR) 2 LANE CLOSURE NO DIVERSION ROUTE (MAX QUEUE METHOD)	AUGUST
	Analyzed for 2009 Construction Season

SUMMARY OF TRAFFIC MODEL OUTPUT

MON-THUR SOUTHBOUND DIRECTION

TIME OF DAY	FLOWS AND CAPACITY IN VEH/HR							AVERAGE SPEEDS IN MPH			
	MAIN ROUTE		SITE CAPA CITY	FLOW		AV.DEL PER VEH (MINS)	AVERAGE QUEUE (VEH)	MAIN ROUTE		SITE	
	DEMAND FLOW	PCT HEAVY		MAIN ROUTE	'DIVER TED'			WITHOUT WORK ZONE	WITH WORK ZONE		
MID-1 AM	619	0.0	2000	619	0	0.55	0	70.0	53.7	43.0	
1-2 AM	423	0.0	2000	423	0	0.52	0	70.2	54.3	43.8	
2-3 AM	388	0.0	2000	388	0	0.52	0	70.2	54.4	44.0	
3-4 AM	471	0.0	2000	471	0	0.53	0	70.2	54.2	43.6	
4-5 AM	853	0.0	2000	853	0	0.57	0	69.7	53.0	42.2	
5-6 AM	2452	0.0	1999	2452	0	2.92	122	67.7	26.3	27.9	
6-7 AM	5092	0.0	1999	2000	3092	17.12+	580	56.1	8.3	27.9	
7-8 AM	6055	0.0	2000	2000	4055	16.73+	580	49.5	8.3	27.9	
8-9 AM	5431	0.0	2000	2000	3431	16.99+	580	53.8	8.3	27.9	
9-10 AM	4648	0.0	2000	2000	2648	17.27+	580	59.1	8.3	27.9	
10-11 AM	4368	0.0	2000	2001	2366	17.36+	580	61.0	8.3	27.9	
11AM-NOON	4688	0.0	2000	2000	2688	17.26+	580	58.8	8.3	27.9	
NOON-1PM	4570	0.0	2000	2000	2569	17.30+	580	59.6	8.3	27.9	
1-2 PM	4644	0.0	1999	2000	2644	17.27+	580	59.1	8.3	27.9	
2-3 PM	5178	0.0	1999	2000	3178	17.09+	580	55.5	8.3	27.9	
3-4 PM	4504	0.0	2000	2000	2503	17.32+	580	60.1	8.3	27.9	
4-5 PM	4189	0.0	2000	2016	2173	17.36+	578	62.2	8.3	27.9	
5-6 PM	4021	0.0	2000	2016	2005	17.40+	578	63.4	8.3	27.9	
6-7 PM	4255	0.0	1999	2000	2254	17.39+	580	61.8	8.3	27.9	
7-8 PM	3073	0.0	2000	2026	1047	17.19+	565	66.9	8.3	27.9	
8-9 PM	2558	0.0	2000	2002	556	17.10+	561	67.6	8.4	27.9	
9-10 PM	2120	0.0	2000	2004	116	17.01+	557	68.1	8.4	27.9	
10-11 PM	1652	0.0	1999	1652	0	12.46+	408	68.7	9.9	27.9	
11PM-MID	1281	0.0	2000	1281	0	1.33	36	69.1	40.0	35.2	

+ INDICATES QUEUEING EXCEEDS USER-SPECIFIED MAXIMUM LIMIT

----- SITE BREAKDOWN DELAYS -----	
BREAKDOWN DURATION (MINS)	0
RANGE OF QUEUE DELAY - MIN (VEH-H) MAX	0.0
AV BREAKDOWNS PER DAY	0.00
AV QUEUE DELAY/DAY (VEH-H)	0.0
AV TOTAL DELAY/DAY (VEH-H)	0.0

----- SITE ACCIDENT DELAYS -----	
BREAKDOWN DURATION (MINS)	0
RANGE OF QUEUE DELAY - MIN (VEH-H) MAX	0
AV BREAKDOWNS PER DAY	0
AV QUEUE DELAY/DAY (VEH-H)	0
AV TOTAL DELAY/DAY (VEH-H)	0

AVERAGE ACCIDENT NUMBERS (PIA/DAY)	
MAIN ROUTE WITHOUT WORKS	0.0259
MAIN ROUTE WITH WORKS	0.0108
'DIVERSION'	0.0289
<small>PIA: Personal Injury Accidents</small>	
IMPACTS ON ROAD USERS	
ROAD USER COSTS PER DAY	\$267,282
CONGESTED HOURS PER DAY*	17

*Delays Exceeding User-Specified Maximum

**USH 45: STH 190 TO NORTH AVE (MILWAUKEE COUNTY)
CONTINUOUS (24 HOUR) 2 LANE CLOSURE
NO DIVERSION ROUTE (MAX QUEUE METHOD)**

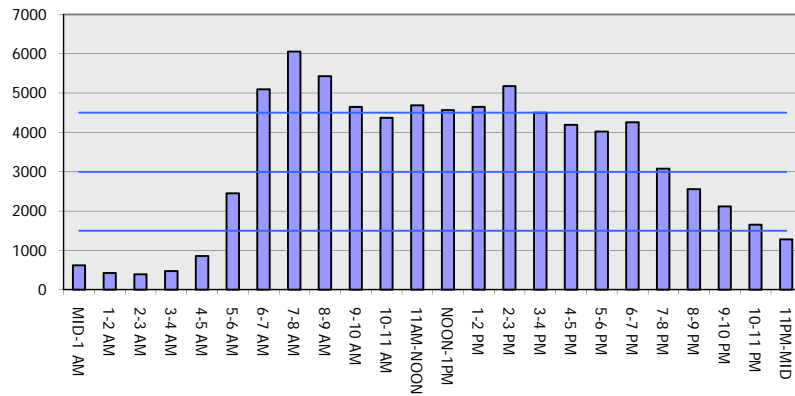
AUGUST

Analyzed for 2009
Construction Season

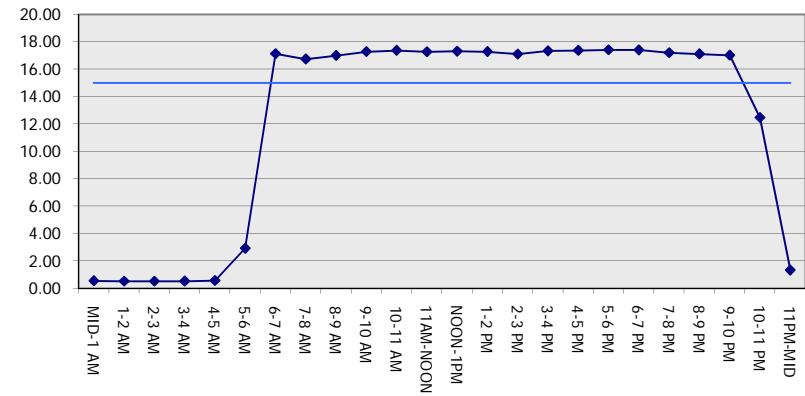
GRAPHICAL REPRESENTATION OF TRAFFIC MODEL INPUT AND OUTPUT

MON-THUR SOUTHBOUND DIRECTION

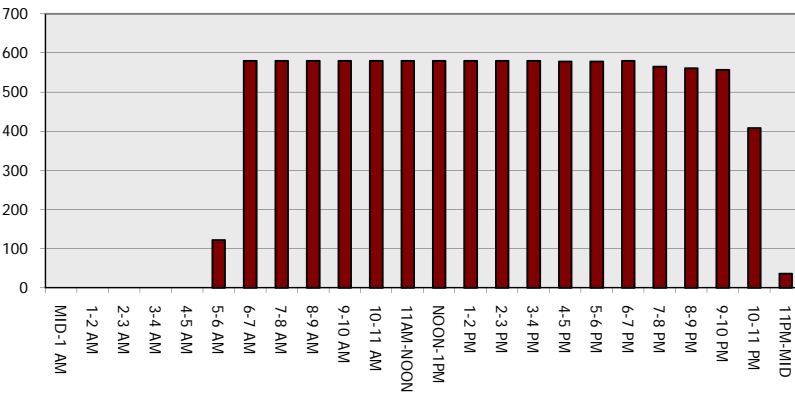
Main Route - Traffic Demand (Vehicles Per Hour)



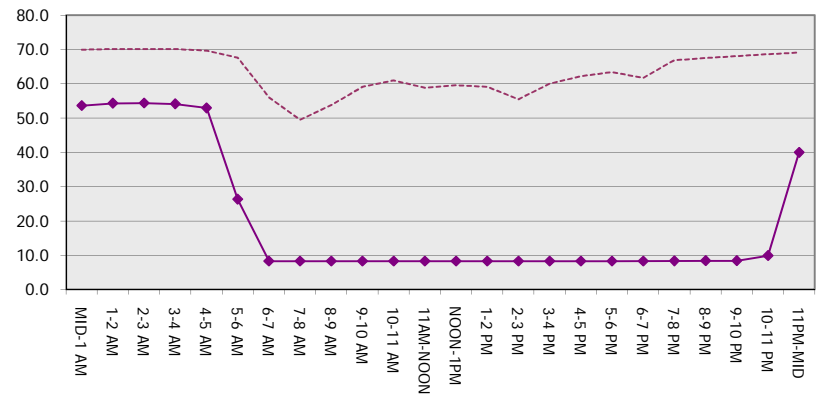
Main Route Average Delay Per Vehicle (Minutes)



Main Route - Average Queue Length (Vehicles)



Main Route - Average Speed (MPH)



USH 45: STH 190 TO NORTH AVE (MILWAUKEE COUNTY) CONTINUOUS (24 HOUR) 2 LANE CLOSURE NO DIVERSION ROUTE (MAX QUEUE METHOD)	AUGUST
	Analyzed for 2009 Construction Season

SUMMARY OF TRAFFIC MODEL OUTPUT

MON-THUR NORTHBOUND DIRECTION

TIME OF DAY	FLOWS AND CAPACITY IN VEH/HR							AVERAGE SPEEDS IN MPH		
	MAIN ROUTE		SITE CAPA CITY	FLOW		AV.DEL PER VEH (MINS)	AVERAGE QUEUE (VEH)	MAIN ROUTE		SITE
	DEMAND FLOW	PCT HEAVY		MAIN ROUTE	'DIVER TED'			WITHOUT WORK ZONE	WITH WORK ZONE	
MID-1 AM	966	0.0	2000	966	0	0.92	24	69.6	46.1	40.8
1-2 AM	667	0.0	2000	667	0	0.55	0	69.9	53.5	42.8
2-3 AM	644	0.0	2000	644	0	0.55	0	69.9	53.6	43.0
3-4 AM	697	0.0	2000	697	0	0.55	0	69.9	53.5	42.8
4-5 AM	1290	0.0	1999	1290	0	0.87	0	69.1	46.8	35.2
5-6 AM	3256	0.0	1999	2458	798	10.22+	375	66.7	11.7	27.9
6-7 AM	5373	0.0	1999	2000	3373	17.02+	580	54.2	8.3	27.9
7-8 AM	6326	0.0	2000	2000	4326	16.60+	580	47.6	8.3	27.9
8-9 AM	5307	0.0	2000	2000	3307	17.04+	580	54.6	8.3	27.9
9-10 AM	4215	0.0	2000	2041	2174	17.27+	575	62.0	8.3	27.9
10-11 AM	4128	0.0	2000	2013	2115	17.39+	578	62.7	8.3	27.9
11AM-NOON	4440	0.0	1999	2000	2440	17.34+	580	60.5	8.3	27.9
NOON-1PM	4468	0.0	2000	2000	2468	17.33+	580	60.4	8.3	27.9
1-2 PM	4996	0.0	2000	2000	2996	17.16+	580	56.7	8.3	27.9
2-3 PM	5629	0.0	2000	2000	3629	16.91+	580	52.4	8.3	27.9
3-4 PM	5583	0.0	2000	2000	3583	16.93+	580	52.7	8.3	27.9
4-5 PM	6398	0.0	2000	2000	4398	16.56+	580	47.1	8.3	27.9
5-6 PM	6274	0.0	2000	2000	4274	16.63+	580	48.0	8.3	27.9
6-7 PM	4596	0.0	2000	2000	2596	17.29+	580	59.4	8.3	27.9
7-8 PM	3390	0.0	2000	2043	1348	17.27+	569	66.5	8.3	27.9
8-9 PM	3006	0.0	2000	2001	1005	17.12+	563	67.0	8.3	27.9
9-10 PM	3071	0.0	2000	2003	1069	17.13+	563	66.9	8.3	27.9
10-11 PM	2801	0.0	2000	2001	801	17.11+	562	67.3	8.4	27.9
11PM-MID	1653	0.0	1999	1653	0	13.43+	443	68.7	9.5	27.9

+ INDICATES QUEUEING EXCEEDS USER-SPECIFIED MAXIMUM LIMIT

BREAKDOWN DURATION (MINS)	0
RANGE OF QUEUE DELAY - MIN (VEH-H) MAX	0.0
AV BREAKDOWNS PER DAY	0.00
AV QUEUE DELAY/DAY (VEH-H)	0.0
AV TOTAL DELAY/DAY (VEH-H)	0.0

BREAKDOWN DURATION (MINS)	0
RANGE OF QUEUE DELAY - MIN (VEH-H) MAX	0
AV BREAKDOWNS PER DAY	0
AV QUEUE DELAY/DAY (VEH-H)	0
AV TOTAL DELAY/DAY (VEH-H)	0

MAIN ROUTE WITHOUT WORKS	0.0298
MAIN ROUTE WITH WORKS	0.0114
'DIVERSION'	0.0361

PIA: Personal Injury Accidents

ROAD USER COSTS PER DAY	\$310,184
CONGESTED HOURS PER DAY*	19

*Delays Exceeding User-Specified Maximum

**USH 45: STH 190 TO NORTH AVE (MILWAUKEE COUNTY)
CONTINUOUS (24 HOUR) 2 LANE CLOSURE
NO DIVERSION ROUTE (MAX QUEUE METHOD)**

AUGUST
Analyzed for 2009
Construction Season

GRAPHICAL REPRESENTATION OF TRAFFIC MODEL INPUT AND OUTPUT
MON-THUR NORTHBOUND DIRECTION

