

IH 43: STH 100/BROWN DEER RD TO SILVER SPRING DR (MILWAUKEE COUNTY) CONTINUOUS (24 HOUR) CLOSURE NO DIVERSION ROUTE (MAX QUEUE METHOD)	OCTOBER
	Analyzed for 2009 Construction Season

SUMMARY OF TRAFFIC MODEL OUTPUT

MON-THUR SOUTHBOUND DIRECTION

TIME OF DAY	FLOWS AND CAPACITY IN VEH/HR						AVERAGE SPEEDS IN MPH				
	MAIN ROUTE		SITE CAPA CITY	FLOW		AV.DEL PER VEH (MINS)	AVERAGE QUEUE (VEH)	MAIN ROUTE		SITE	
	DEMAND FLOW	PCT HEAVY		MAIN ROUTE	'DIVER TED'			WITHOUT WORK ZONE	WITH WORK ZONE		
MID-1 AM	294	0.0	1500	294	0	0.45	0	65.8	57.3	44.3	
1-2 AM	231	0.0	1500	231	0	0.44	0	66.0	57.4	44.6	
2-3 AM	148	0.0	1500	148	0	0.44	0	66.1	57.7	44.9	
3-4 AM	168	0.0	1500	168	0	0.44	0	66.1	57.6	44.8	
4-5 AM	391	0.0	1500	391	0	0.46	0	65.6	56.9	43.9	
5-6 AM	1255	0.0	1499	1255	0	1.05	10	64.0	47.8	36.3	
6-7 AM	3021	0.0	1500	1812	1210	13.04+	357	55.6	12.0	35.1	
7-8 AM	4149	0.0	1499	1500	2649	14.66+	406	44.0	10.6	30.8	
8-9 AM	3569	0.0	1500	1502	2067	15.21+	406	49.9	10.6	30.8	
9-10 AM	2585	0.0	1500	1506	1079	15.84+	404	60.1	10.6	30.8	
10-11 AM	2306	0.0	1500	1501	804	15.93+	404	62.1	10.7	30.8	
11AM-NOON	2427	0.0	1500	1503	924	15.91+	404	61.7	10.6	30.8	
NOON-1PM	2488	0.0	1500	1503	985	15.88+	404	61.0	10.6	30.8	
1-2 PM	2429	0.0	1500	1502	927	15.91+	404	61.6	10.6	30.8	
2-3 PM	2685	0.0	1500	1506	1179	15.78+	404	59.0	10.6	30.8	
3-4 PM	2999	0.0	1500	1507	1492	15.61+	405	55.8	10.6	30.8	
4-5 PM	2933	0.0	1500	1506	1427	15.65+	405	56.4	10.6	30.8	
5-6 PM	3220	0.0	1499	1501	1719	15.48+	406	53.5	10.6	30.8	
6-7 PM	2411	0.0	1500	1501	910	15.92+	404	61.8	10.6	30.8	
7-8 PM	1602	0.0	1500	1477	124	15.54+	392	63.4	10.8	30.8	
8-9 PM	1230	0.0	1499	1230	0	9.66	252	64.1	15.5	32.0	
9-10 PM	1009	0.0	1500	1009	0	0.81	11	64.5	51.0	41.4	
10-11 PM	720	0.0	1500	720	0	0.49	0	65.0	56.0	42.7	
11PM-MID	453	0.0	1500	453	0	0.47	0	65.5	56.8	43.7	

+ INDICATES QUEUEING EXCEEDS USER-SPECIFIED MAXIMUM LIMIT

----- SITE BREAKDOWN DELAYS -----	
BREAKDOWN DURATION (MINS)	0
RANGE OF QUEUE DELAY - MIN (VEH-H) MAX	0.0
AV BREAKDOWNS PER DAY	0.00
AV QUEUE DELAY/DAY (VEH-H)	0.0
AV TOTAL DELAY/DAY (VEH-H)	0.0

----- SITE ACCIDENT DELAYS -----	
BREAKDOWN DURATION (MINS)	0
RANGE OF QUEUE DELAY - MIN (VEH-H) MAX	0
AV BREAKDOWNS PER DAY	0
AV QUEUE DELAY/DAY (VEH-H)	0
AV TOTAL DELAY/DAY (VEH-H)	0

AVERAGE ACCIDENT NUMBERS (PIA/DAY)	
MAIN ROUTE WITHOUT WORKS	0.0235
MAIN ROUTE WITH WORKS	0.0125
'DIVERSION'	0.0213
PIA: Personal Injury Accidents	
IMPACTS ON ROAD USERS	
ROAD USER COSTS PER DAY	\$134,225
CONGESTED HOURS PER DAY*	14

*Delays Exceeding User-Specified Maximum

**IH 43: STH 100/BROWN DEER RD TO SILVER SPRING DR (MILWAUKEE COUNTY)
CONTINUOUS (24 HOUR) CLOSURE
NO DIVERSION ROUTE (MAX QUEUE METHOD)**

OCTOBER

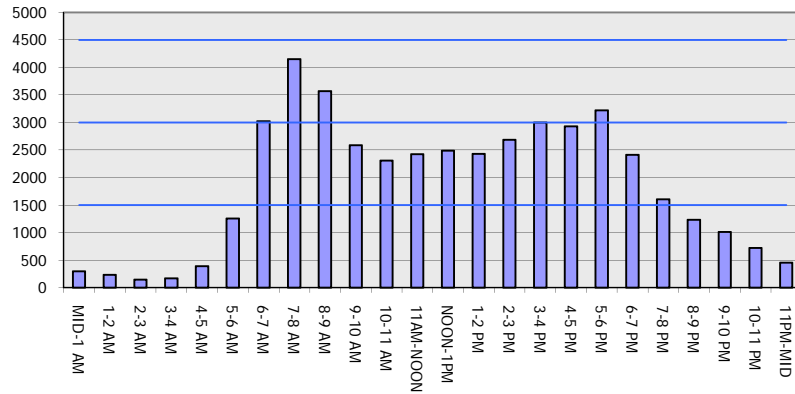
Analyzed for 2009
Construction Season

GRAPHICAL REPRESENTATION OF TRAFFIC MODEL INPUT AND OUTPUT

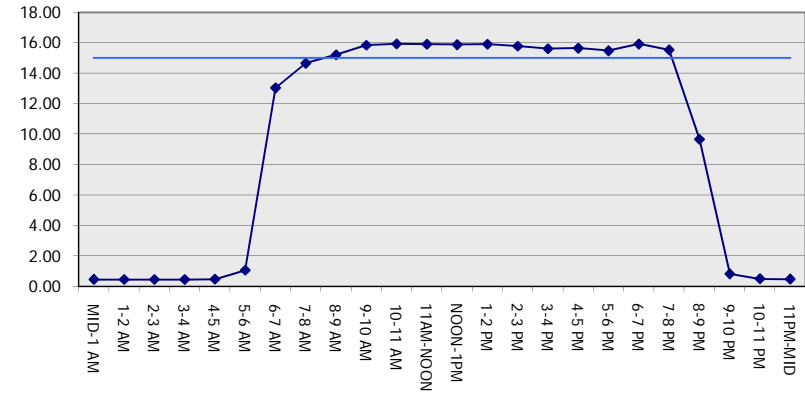
MON-THUR

SOUTHBOUND DIRECTION

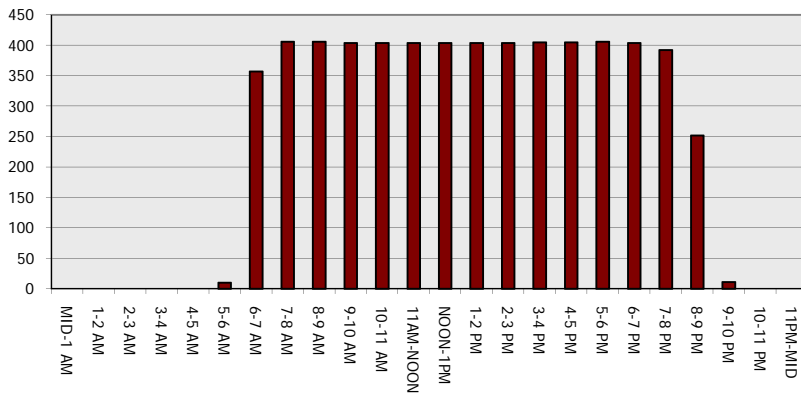
Main Route - Traffic Demand (Vehicles Per Hour)



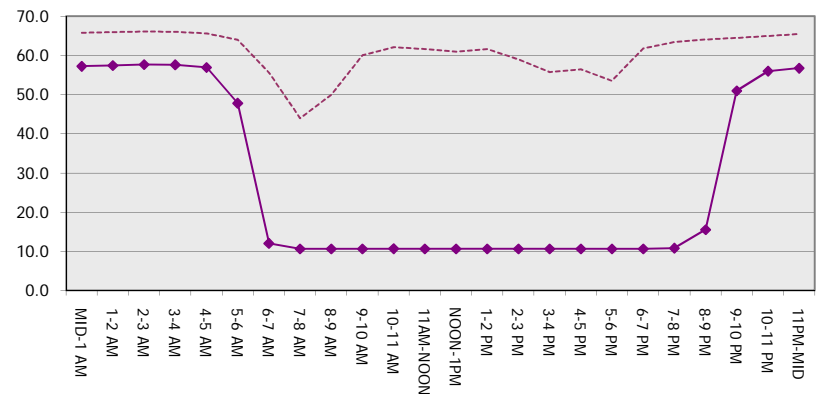
Main Route Average Delay Per Vehicle (Minutes)



Main Route - Average Queue Length (Vehicles)



Main Route - Average Speed (MPH)



IH 43: STH 100/BROWN DEER RD TO SILVER SPRING DR (MILWAUKEE COUNTY) CONTINUOUS (24 HOUR) CLOSURE NO DIVERSION ROUTE (MAX QUEUE METHOD)	OCTOBER
	Analyzed for 2009 Construction Season

SUMMARY OF TRAFFIC MODEL OUTPUT

MON-THUR NORTHBOUND DIRECTION

TIME OF DAY	FLOWS AND CAPACITY IN VEH/HR							AVERAGE SPEEDS IN MPH		
	MAIN ROUTE		SITE CAPA CITY	FLOW		AV.DEL PER VEH (MINS)	AVERAGE QUEUE (VEH)	MAIN ROUTE		SITE
	DEMAND FLOW	PCT HEAVY		MAIN ROUTE	'DIVER TED'			WITHOUT WORK ZONE	WITH WORK ZONE	
MID-1 AM	294	0.0	1500	294	0	0.45	0	65.8	57.3	44.3
1-2 AM	173	0.0	1500	173	0	0.44	0	66.1	57.6	44.8
2-3 AM	156	0.0	1500	156	0	0.44	0	66.1	57.7	44.8
3-4 AM	164	0.0	1500	164	0	0.44	0	66.1	57.6	44.8
4-5 AM	275	0.0	1500	275	0	0.45	0	65.9	57.3	44.4
5-6 AM	784	0.0	1500	784	0	0.50	0	64.9	55.8	42.5
6-7 AM	1773	0.0	1499	1773	0	2.84	75	63.1	33.1	30.8
7-8 AM	2746	0.0	1499	1567	1180	15.56+	400	58.4	10.7	30.9
8-9 AM	2683	0.0	1500	1509	1173	15.80+	405	59.0	10.6	30.8
9-10 AM	2184	0.0	1500	1502	683	15.94+	404	62.3	10.7	30.8
10-11 AM	2087	0.0	1500	1501	585	15.94+	403	62.5	10.7	30.8
11AM-NOON	2271	0.0	1500	1502	769	15.93+	404	62.2	10.7	30.8
NOON-1PM	2403	0.0	1500	1504	899	15.93+	404	61.9	10.6	30.8
1-2 PM	2445	0.0	1500	1504	941	15.91+	404	61.5	10.6	30.8
2-3 PM	2900	0.0	1500	1508	1392	15.67+	405	56.8	10.6	30.8
3-4 PM	3579	0.0	1499	1500	2079	15.21+	406	49.8	10.6	30.8
4-5 PM	3874	0.0	1500	1500	2374	14.94+	406	46.8	10.6	30.8
5-6 PM	4071	0.0	1500	1500	2571	14.74+	406	44.8	10.6	30.8
6-7 PM	3027	0.0	1500	1505	1522	15.59+	405	55.5	10.6	30.8
7-8 PM	2012	0.0	1500	1501	512	15.95+	403	62.7	10.7	30.8
8-9 PM	1679	0.0	1500	1531	148	15.83+	399	63.3	10.7	30.8
9-10 PM	1398	0.0	1499	1392	6	14.91+	376	63.8	11.2	30.8
10-11 PM	854	0.0	1499	854	0	2.10	82	64.8	38.4	40.6
11PM-MID	526	0.0	1500	526	0	0.47	0	65.4	56.6	43.4

+ INDICATES QUEUEING EXCEEDS USER-SPECIFIED MAXIMUM LIMIT

----- SITE BREAKDOWN DELAYS -----	
BREAKDOWN DURATION (MINS)	0
RANGE OF QUEUE DELAY - MIN (VEH-H) MAX	0.0
AV BREAKDOWNS PER DAY	0.00
AV QUEUE DELAY/DAY (VEH-H)	0.0
AV TOTAL DELAY/DAY (VEH-H)	0.0

----- SITE ACCIDENT DELAYS -----	
BREAKDOWN DURATION (MINS)	0
RANGE OF QUEUE DELAY - MIN (VEH-H) MAX	0
AV BREAKDOWNS PER DAY	0
AV QUEUE DELAY/DAY (VEH-H)	0
AV TOTAL DELAY/DAY (VEH-H)	0

AVERAGE ACCIDENT NUMBERS (PIA/DAY)	
MAIN ROUTE WITHOUT WORKS	0.0233
MAIN ROUTE WITH WORKS	0.0126
'DIVERSION'	0.0205

PIA: Personal Injury Accidents

ECONOMIC IMPACT ON ROAD USERS	
ROAD USER COSTS PER DAY	\$135,687
CONGESTED HOURS PER DAY*	15

*Delays Exceeding User-Specified Maximum

**IH 43: STH 100/BROWN DEER RD TO SILVER SPRING DR (MILWAUKEE COUNTY)
 CONTINUOUS (24 HOUR) CLOSURE
 NO DIVERSION ROUTE (MAX QUEUE METHOD)**

OCTOBER
 Analyzed for 2009
 Construction Season

GRAPHICAL REPRESENTATION OF TRAFFIC MODEL INPUT AND OUTPUT
MON-THUR NORTHBOUND DIRECTION

