

IH 43: STH 100/BROWN DEER RD TO SILVER SPRING DR (MILWAUKEE COUNTY) CONTINUOUS (24 HOUR) CLOSURE NO DIVERSION ROUTE (MAX QUEUE METHOD)	OCTOBER
	Analyzed for 2009 Construction Season

SUMMARY OF TRAFFIC MODEL OUTPUT

FRIDAY SOUTHBOUND DIRECTION

TIME OF DAY	FLOWS AND CAPACITY IN VEH/HR						AVERAGE SPEEDS IN MPH				
	MAIN ROUTE		SITE CAPA CITY	FLOW		AV.DEL PER VEH (MINS)	AVERAGE QUEUE (VEH)	MAIN ROUTE		SITE	
	DEMAND FLOW	PCT HEAVY		MAIN ROUTE	'DIVER TED'			WITHOUT WORK ZONE	WITH WORK ZONE		
MID-1 AM	253	0.0	1500	253	0	0.45	0	65.9	57.4	44.5	
1-2 AM	155	0.0	1500	155	0	0.44	0	66.1	57.7	44.8	
2-3 AM	138	0.0	1500	138	0	0.44	0	66.1	57.7	45.0	
3-4 AM	165	0.0	1500	165	0	0.44	0	66.1	57.6	44.8	
4-5 AM	353	0.0	1500	353	0	0.46	0	65.7	57.1	44.1	
5-6 AM	1139	0.0	1499	1139	0	0.72	0	64.3	52.1	37.0	
6-7 AM	2878	0.0	1499	1994	884	12.32+	327	57.0	12.7	31.2	
7-8 AM	4177	0.0	1499	1500	2678	14.60+	406	43.7	10.6	31.3	
8-9 AM	3222	0.0	1499	1490	1732	15.43+	405	53.5	10.6	31.1	
9-10 AM	2467	0.0	1499	1493	975	15.91+	404	61.2	10.6	30.8	
10-11 AM	2336	0.0	1499	1496	840	15.94+	404	62.0	10.6	30.8	
11AM-NOON	2469	0.0	1499	1494	975	15.90+	404	61.2	10.6	30.8	
NOON-1PM	2578	0.0	1499	1493	1084	15.85+	405	60.1	10.6	30.8	
1-2 PM	2561	0.0	1499	1494	1067	15.86+	404	60.2	10.6	30.8	
2-3 PM	2774	0.0	1499	1491	1283	15.75+	405	58.1	10.6	30.8	
3-4 PM	3139	0.0	1499	1494	1645	15.52+	405	54.3	10.6	30.8	
4-5 PM	3174	0.0	1499	1495	1678	15.50+	406	54.0	10.6	30.8	
5-6 PM	3392	0.0	1499	1499	1892	15.36+	406	51.7	10.6	30.8	
6-7 PM	2790	0.0	1499	1495	1295	15.73+	405	57.9	10.6	30.8	
7-8 PM	1974	0.0	1499	1499	475	15.95+	403	62.7	10.7	30.8	
8-9 PM	1347	0.0	1499	1319	29	13.78+	348	63.9	11.8	30.8	
9-10 PM	1244	0.0	1500	1244	0	4.72	127	64.1	25.3	33.0	
10-11 PM	1044	0.0	1500	1044	0	0.52	0	64.5	55.1	41.5	
11PM-MID	749	0.0	1500	749	0	0.50	0	65.0	55.9	42.6	

+ INDICATES QUEUEING EXCEEDS USER-SPECIFIED MAXIMUM LIMIT

----- SITE BREAKDOWN DELAYS -----	
BREAKDOWN DURATION (MINS)	0
RANGE OF QUEUE DELAY - MIN (VEH-H) MAX	0.0
AV BREAKDOWNS PER DAY	0.00
AV QUEUE DELAY/DAY (VEH-H)	0.0
AV TOTAL DELAY/DAY (VEH-H)	0.0

----- SITE ACCIDENT DELAYS -----	
BREAKDOWN DURATION (MINS)	0
RANGE OF QUEUE DELAY - MIN (VEH-H) MAX	0
AV BREAKDOWNS PER DAY	0
AV QUEUE DELAY/DAY (VEH-H)	0
AV TOTAL DELAY/DAY (VEH-H)	0

AVERAGE ACCIDENT NUMBERS (PIA/DAY)	
MAIN ROUTE WITHOUT WORKS	0.0244
MAIN ROUTE WITH WORKS	0.0128
'DIVERSION'	0.0225
<small>PIA: Personal Injury Accidents</small>	
IMPACTS ON ROAD USERS	
ROAD USER COSTS PER DAY	\$144,303
CONGESTED HOURS PER DAY*	15

*Delays Exceeding User-Specified Maximum

**IH 43: STH 100/BROWN DEER RD TO SILVER SPRING DR (MILWAUKEE COUNTY)
CONTINUOUS (24 HOUR) CLOSURE
NO DIVERSION ROUTE (MAX QUEUE METHOD)**

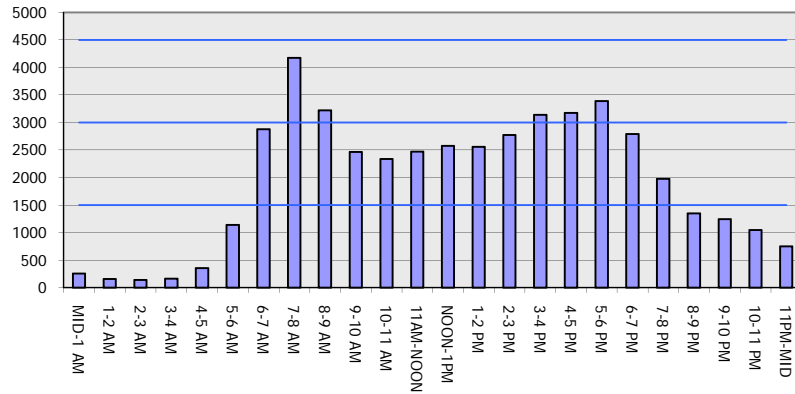
OCTOBER

Analyzed for 2009
Construction Season

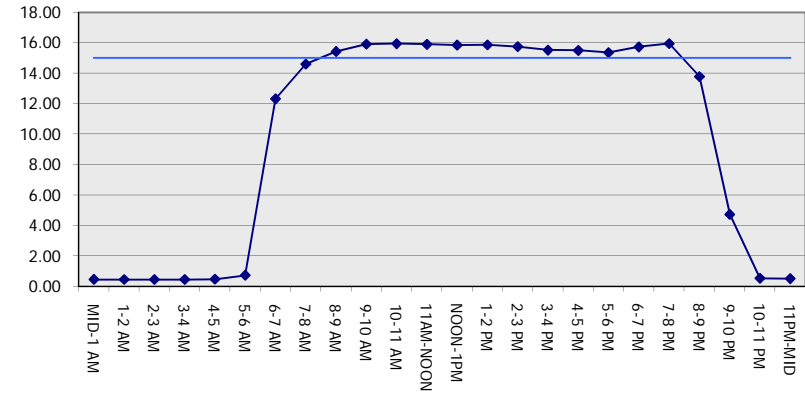
GRAPHICAL REPRESENTATION OF TRAFFIC MODEL INPUT AND OUTPUT

FRIDAY SOUTHBOUND DIRECTION

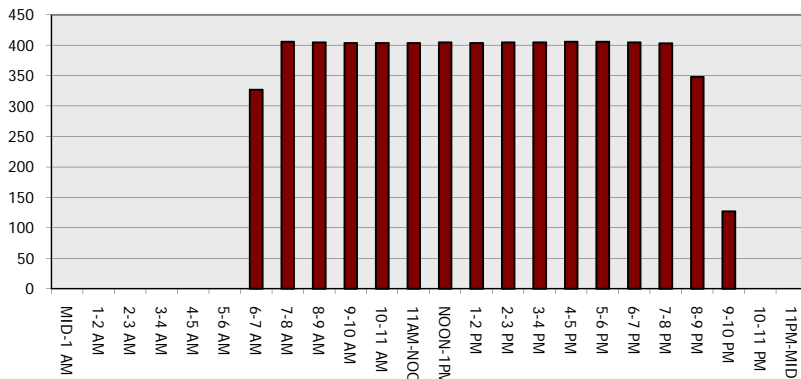
Main Route - Traffic Demand (Vehicles Per Hour)



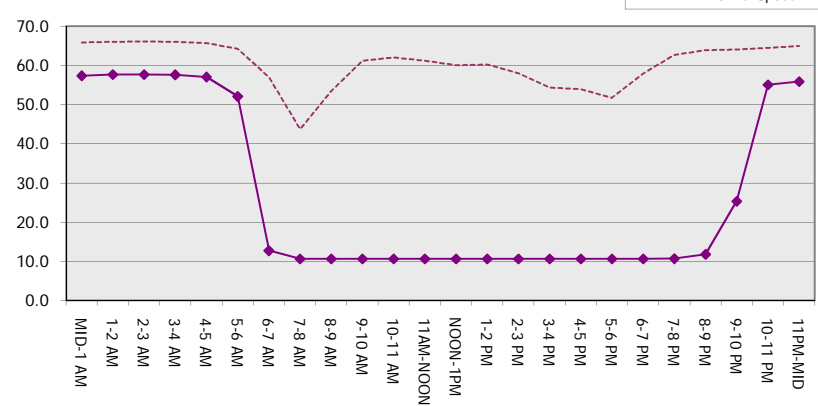
Main Route Average Delay Per Vehicle (Minutes)



Main Route - Average Queue Length (Vehicles)



Main Route - Average Speed (MPH)



IH 43: STH 100/BROWN DEER RD TO SILVER SPRING DR (MILWAUKEE COUNTY) CONTINUOUS (24 HOUR) CLOSURE NO DIVERSION ROUTE (MAX QUEUE METHOD)	OCTOBER
	Analyzed for 2009 Construction Season

SUMMARY OF TRAFFIC MODEL OUTPUT

FRIDAY NORTHBOUND DIRECTION

TIME OF DAY	FLOWS AND CAPACITY IN VEH/HR							AVERAGE SPEEDS IN MPH		
	MAIN ROUTE		SITE CAPA CITY	FLOW		AV.DEL PER VEH (MINS)	AVERAGE QUEUE (VEH)	MAIN ROUTE		SITE
	DEMAND FLOW	PCT HEAVY		MAIN ROUTE	'DIVER TED'			WITHOUT WORK ZONE	WITH WORK ZONE	
MID-1 AM	413	0.0	1500	413	0	0.46	0	65.6	56.9	43.8
1-2 AM	253	0.0	1500	253	0	0.45	0	65.9	57.4	44.5
2-3 AM	224	0.0	1500	224	0	0.44	0	66.0	57.4	44.6
3-4 AM	217	0.0	1500	217	0	0.44	0	66.0	57.5	44.6
4-5 AM	307	0.0	1500	307	0	0.45	0	65.8	57.2	44.3
5-6 AM	810	0.0	1500	810	0	0.50	0	64.9	55.7	42.4
6-7 AM	1901	0.0	1499	1901	0	4.40	134	62.8	26.2	30.8
7-8 AM	2922	0.0	1499	1501	1421	15.66+	405	56.6	10.6	30.8
8-9 AM	2887	0.0	1500	1501	1387	15.67+	405	56.9	10.6	30.8
9-10 AM	2422	0.0	1500	1500	922	15.91+	404	61.7	10.7	30.8
10-11 AM	2664	0.0	1500	1500	1164	15.78+	404	59.2	10.6	30.8
11AM-NOON	2984	0.0	1499	1501	1483	15.63+	405	56.0	10.6	30.8
NOON-1PM	3151	0.0	1500	1500	1651	15.54+	406	54.2	10.6	30.8
1-2 PM	3343	0.0	1500	1500	1843	15.40+	406	52.2	10.6	30.8
2-3 PM	3787	0.0	1500	1500	2287	15.02+	406	47.7	10.6	30.8
3-4 PM	4124	0.0	1500	1500	2624	14.69+	406	44.3	10.6	30.8
4-5 PM	4266	0.0	1500	1500	2766	14.53+	406	42.8	10.6	30.8
5-6 PM	4098	0.0	1500	1500	2598	14.71+	406	44.5	10.6	30.8
6-7 PM	3630	0.0	1500	1500	2130	15.16+	406	49.3	10.6	30.8
7-8 PM	2318	0.0	1500	1500	818	15.92+	404	62.0	10.7	30.8
8-9 PM	1969	0.0	1500	1500	469	15.95+	403	62.7	10.7	30.8
9-10 PM	1856	0.0	1500	1500	356	15.96+	403	62.9	10.7	30.8
10-11 PM	1497	0.0	1500	1438	59	15.41+	388	63.6	10.9	30.8
11PM-MID	889	0.0	1499	889	0	2.81	119	64.7	33.7	38.9

+ INDICATES QUEUEING EXCEEDS USER-SPECIFIED MAXIMUM LIMIT

BREAKDOWN DURATION (MINS)	0
RANGE OF QUEUE DELAY - MIN (VEH-H) MAX	0.0
AV BREAKDOWNS PER DAY	0.00
AV QUEUE DELAY/DAY (VEH-H)	0.0
AV TOTAL DELAY/DAY (VEH-H)	0.0

BREAKDOWN DURATION (MINS)	0
RANGE OF QUEUE DELAY - MIN (VEH-H) MAX	0
AV BREAKDOWNS PER DAY	0
AV QUEUE DELAY/DAY (VEH-H)	0
AV TOTAL DELAY/DAY (VEH-H)	0

MAIN ROUTE WITHOUT WORKS	0.0278
MAIN ROUTE WITH WORKS	0.0133
'DIVERSION'	0.0292

PIA: Personal Injury Accidents

ROAD USER COSTS PER DAY	\$168,511
CONGESTED HOURS PER DAY*	16

*Delays Exceeding User-Specified Maximum

**IH 43: STH 100/BROWN DEER RD TO SILVER SPRING DR (MILWAUKEE COUNTY)
CONTINUOUS (24 HOUR) CLOSURE
NO DIVERSION ROUTE (MAX QUEUE METHOD)**

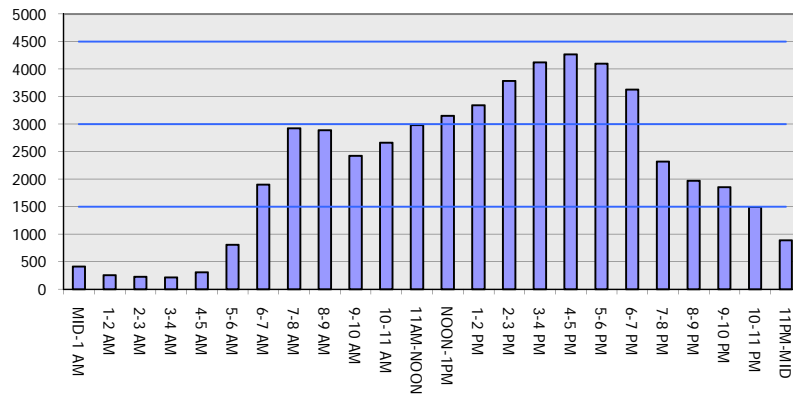
OCTOBER

Analyzed for 2009
Construction Season

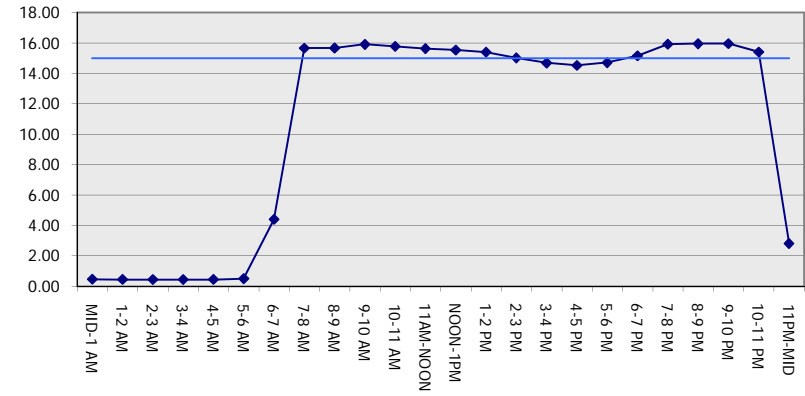
GRAPHICAL REPRESENTATION OF TRAFFIC MODEL INPUT AND OUTPUT

FRIDAY NORTHBOUND DIRECTION

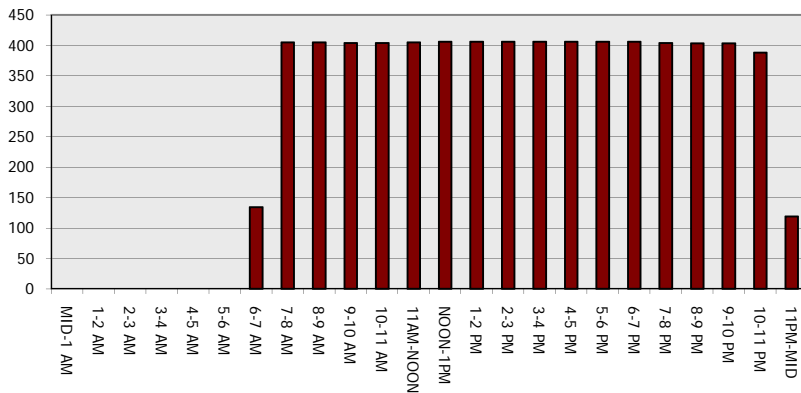
Main Route - Traffic Demand (Vehicles Per Hour)



Main Route Average Delay Per Vehicle (Minutes)



Main Route - Average Queue Length (Vehicles)



Main Route - Average Speed (MPH)

