

IH 43: SILVER SPRING DR TO STH 190 (MILWAUKEE COUNTY) CONTINUOUS (24 HOUR) CLOSURE NO DIVERSION ROUTE (MAX QUEUE METHOD)	OCTOBER
	Analyzed for 2009 Construction Season

SUMMARY OF TRAFFIC MODEL OUTPUT

MON-THUR SOUTHBOUND DIRECTION

TIME OF DAY	FLOWS AND CAPACITY IN VEH/HR						AVERAGE SPEEDS IN MPH			
	MAIN ROUTE		SITE CAPA CITY	FLOW		AV.DEL PER VEH (MINS)	AVERAGE QUEUE (VEH)	MAIN ROUTE		SITE
	DEMAND FLOW	PCT HEAVY		MAIN ROUTE	'DIVER TED'			WITHOUT WORK ZONE	WITH WORK ZONE	
MID-1 AM	420	0.0	3000	420	0	0.36	0	70.2	62.5	49.7
1-2 AM	291	0.0	3000	291	0	0.36	0	70.2	62.5	49.7
2-3 AM	209	0.0	3000	209	0	0.36	0	70.2	62.5	49.7
3-4 AM	221	0.0	3000	221	0	0.36	0	70.2	62.5	49.7
4-5 AM	519	0.0	3000	519	0	0.36	0	70.1	62.4	49.7
5-6 AM	1571	0.0	3000	1571	0	0.34	0	68.8	61.7	49.7
6-7 AM	3864	0.0	2999	3864	0	4.52	309	64.5	26.5	37.3
7-8 AM	5488	0.0	2999	3000	2488	15.50+	864	53.3	12.0	37.3
8-9 AM	4758	0.0	3000	2995	1763	15.83+	861	58.4	12.0	37.3
9-10 AM	3478	0.0	3000	2995	483	15.89+	837	66.4	12.2	37.3
10-11 AM	3040	0.0	2999	2981	59	15.85+	833	66.9	12.2	37.3
11AM-NOON	3218	0.0	3000	3000	218	15.89+	836	66.8	12.2	37.3
NOON-1PM	3367	0.0	3000	3000	367	15.89+	837	66.6	12.2	37.3
1-2 PM	3431	0.0	3000	3000	431	15.89+	837	66.4	12.2	37.3
2-3 PM	3966	0.0	2999	3001	965	15.78+	839	63.8	12.2	37.3
3-4 PM	4404	0.0	2999	3016	1388	15.84+	852	60.8	12.0	37.3
4-5 PM	4220	0.0	3000	2992	1228	15.79+	845	62.0	12.1	37.3
5-6 PM	4486	0.0	2999	3009	1477	15.88+	857	60.2	12.0	37.3
6-7 PM	3574	0.0	3000	2996	578	15.90+	837	66.3	12.2	37.3
7-8 PM	2409	0.0	2999	2409	0	11.08+	607	67.8	15.1	39.3
8-9 PM	1883	0.0	3000	1883	0	0.71	33	68.4	55.3	49.7
9-10 PM	1590	0.0	3000	1590	0	0.34	0	68.7	61.7	49.7
10-11 PM	1128	0.0	3000	1128	0	0.35	0	69.3	62.0	49.7
11PM-MID	744	0.0	3000	744	0	0.35	0	69.8	62.2	49.7

+ INDICATES QUEUEING EXCEEDS USER-SPECIFIED MAXIMUM LIMIT

----- SITE BREAKDOWN DELAYS -----	
BREAKDOWN DURATION (MINS)	0
RANGE OF QUEUE DELAY - MIN (VEH-H) MAX	0.0
AV BREAKDOWNS PER DAY	0.00
AV QUEUE DELAY/DAY (VEH-H)	0.0
AV TOTAL DELAY/DAY (VEH-H)	0.0

----- SITE ACCIDENT DELAYS -----	
BREAKDOWN DURATION (MINS)	0
RANGE OF QUEUE DELAY - MIN (VEH-H) MAX	0
AV BREAKDOWNS PER DAY	0
AV QUEUE DELAY/DAY (VEH-H)	0
AV TOTAL DELAY/DAY (VEH-H)	0

AVERAGE ACCIDENT NUMBERS (PIA/DAY)	
MAIN ROUTE WITHOUT WORKS	0.0337
MAIN ROUTE WITH WORKS	0.0241
'DIVERSION'	0.0143
<small>PIA: Personal Injury Accidents</small>	
IMPACTS ON ROAD USERS	
ROAD USER COSTS PER DAY	\$176,205
CONGESTED HOURS PER DAY*	13

*Delays Exceeding User-Specified Maximum

IH 43: SILVER SPRING DR TO STH 190 (MILWAUKEE COUNTY)
CONTINUOUS (24 HOUR) CLOSURE
NO DIVERSION ROUTE (MAX QUEUE METHOD)

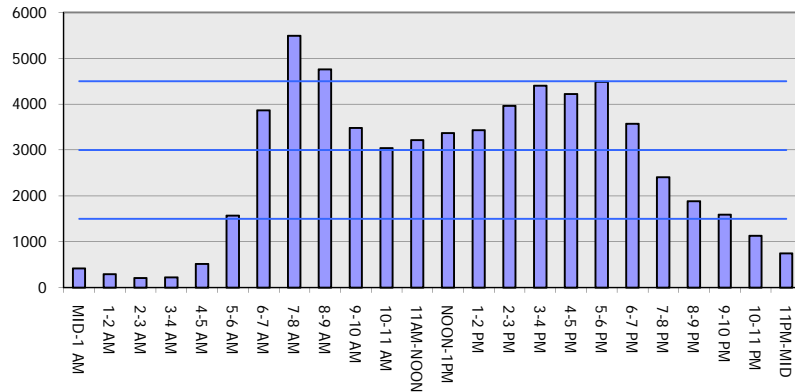
OCTOBER

Analyzed for 2009
 Construction Season

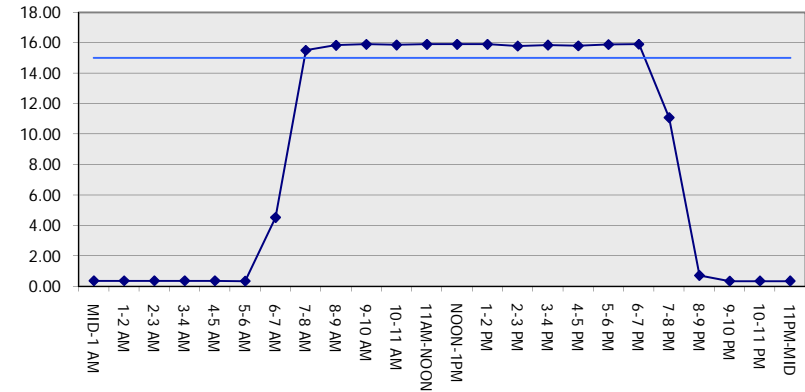
GRAPHICAL REPRESENTATION OF TRAFFIC MODEL INPUT AND OUTPUT

MON-THUR SOUTHBOUND DIRECTION

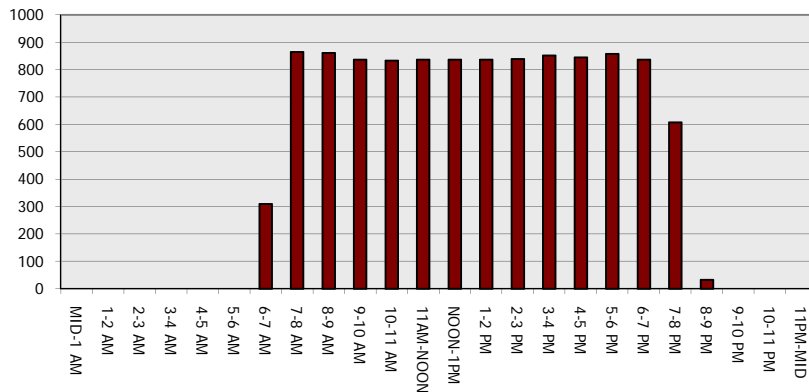
Main Route - Traffic Demand (Vehicles Per Hour)



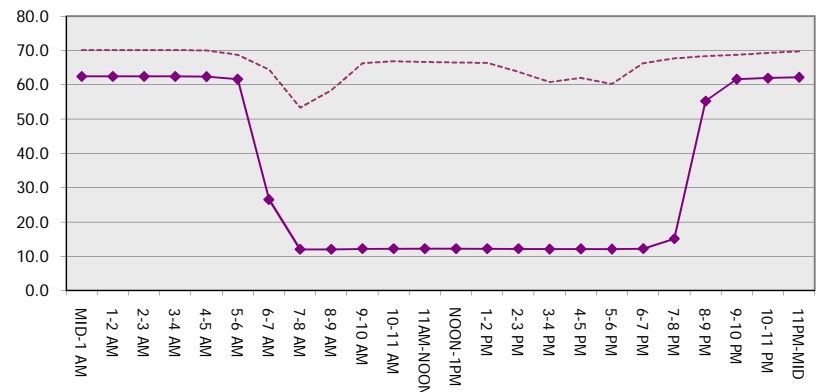
Main Route Average Delay Per Vehicle (Minutes)



Main Route - Average Queue Length (Vehicles)



Main Route - Average Speed (MPH)



IH 43: SILVER SPRING DR TO STH 190 (MILWAUKEE COUNTY) CONTINUOUS (24 HOUR) CLOSURE NO DIVERSION ROUTE (MAX QUEUE METHOD)	OCTOBER
	Analyzed for 2009 Construction Season

SUMMARY OF TRAFFIC MODEL OUTPUT

MON-THUR NORTHBOUND DIRECTION

TIME OF DAY	FLOWS AND CAPACITY IN VEH/HR							AVERAGE SPEEDS IN MPH			
	MAIN ROUTE		SITE CAPA CITY	FLOW		AV.DEL PER VEH (MINS)	AVERAGE QUEUE (VEH)	MAIN ROUTE		SITE	
	DEMAND FLOW	PCT HEAVY		MAIN ROUTE	'DIVER TED'			WITHOUT WORK ZONE	WITH WORK ZONE		
MID-1 AM	516	0.0	3000	516	0	0.36	0	70.1	62.4	49.7	
1-2 AM	324	0.0	3000	324	0	0.36	0	70.2	62.5	49.7	
2-3 AM	270	0.0	3000	270	0	0.36	0	70.2	62.5	49.7	
3-4 AM	297	0.0	3000	297	0	0.36	0	70.2	62.5	49.7	
4-5 AM	485	0.0	3000	485	0	0.36	0	70.1	62.4	49.7	
5-6 AM	1503	0.0	3000	1503	0	0.34	0	68.9	61.7	49.7	
6-7 AM	3222	0.0	2999	3222	0	1.62	74	66.8	43.5	38.4	
7-8 AM	4476	0.0	3000	3639	836	13.52+	749	60.3	13.2	37.3	
8-9 AM	3928	0.0	2999	2946	982	15.91+	845	64.0	12.1	37.3	
9-10 AM	3047	0.0	2999	2905	142	15.57+	818	66.9	12.3	37.3	
10-11 AM	2843	0.0	2999	2843	0	13.56+	707	67.2	13.1	37.3	
11AM-NOON	3062	0.0	3000	3062	0	12.49	648	66.9	13.6	37.3	
NOON-1PM	3243	0.0	3000	3113	129	15.02+	789	66.7	12.5	37.3	
1-2 PM	3337	0.0	3000	3007	330	15.89+	836	66.6	12.2	37.3	
2-3 PM	3909	0.0	3000	3015	893	15.82+	840	64.1	12.1	37.3	
3-4 PM	4636	0.0	3000	3023	1613	15.85+	859	59.2	12.0	37.3	
4-5 PM	5228	0.0	3000	3000	2228	15.64+	864	55.1	12.0	37.3	
5-6 PM	5399	0.0	3000	3000	2399	15.55+	864	54.0	12.0	37.3	
6-7 PM	3878	0.0	3000	2994	884	15.85+	841	64.3	12.1	37.3	
7-8 PM	2717	0.0	2999	2717	0	14.35+	754	67.4	12.8	37.3	
8-9 PM	2251	0.0	2999	2251	0	3.00	229	67.9	34.0	44.9	
9-10 PM	2026	0.0	3000	2026	0	0.33	0	68.2	61.4	49.7	
10-11 PM	1322	0.0	3000	1322	0	0.35	0	69.1	61.9	49.7	
11PM-MID	880	0.0	3000	880	0	0.35	0	69.6	62.2	49.7	

+ INDICATES QUEUEING EXCEEDS USER-SPECIFIED MAXIMUM LIMIT

----- SITE BREAKDOWN DELAYS -----	
BREAKDOWN DURATION (MINS)	0
RANGE OF QUEUE DELAY - MIN (VEH-H) MAX	0.0
AV BREAKDOWNS PER DAY	0.00
AV QUEUE DELAY/DAY (VEH-H)	0.0
AV TOTAL DELAY/DAY (VEH-H)	0.0

----- SITE ACCIDENT DELAYS -----	
BREAKDOWN DURATION (MINS)	0
RANGE OF QUEUE DELAY - MIN (VEH-H) MAX	0
AV BREAKDOWNS PER DAY	0
AV QUEUE DELAY/DAY (VEH-H)	0
AV TOTAL DELAY/DAY (VEH-H)	0

AVERAGE ACCIDENT NUMBERS (PIA/DAY)	
MAIN ROUTE WITHOUT WORKS	0.0340
MAIN ROUTE WITH WORKS	0.0249
'DIVERSION'	0.0131

PIA: Personal Injury Accidents

ECONOMIC IMPACT ON ROAD USERS	
ROAD USER COSTS PER DAY	\$168,969
CONGESTED HOURS PER DAY*	12

*Delays Exceeding User-Specified Maximum

**IH 43: SILVER SPRING DR TO STH 190 (MILWAUKEE COUNTY)
CONTINUOUS (24 HOUR) CLOSURE
NO DIVERSION ROUTE (MAX QUEUE METHOD)**

OCTOBER

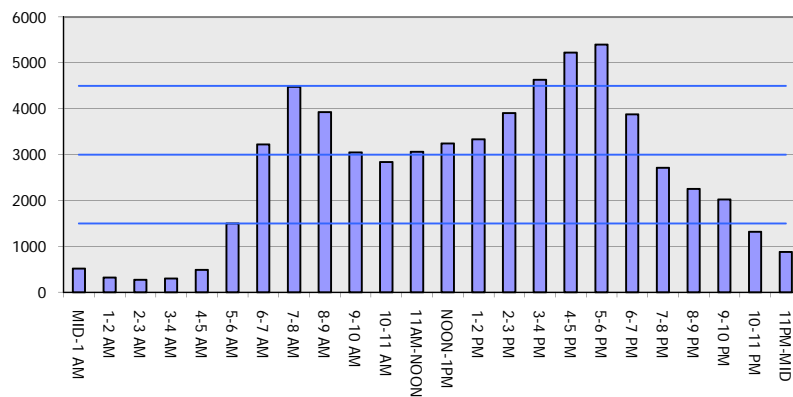
Analyzed for 2009
Construction Season

GRAPHICAL REPRESENTATION OF TRAFFIC MODEL INPUT AND OUTPUT

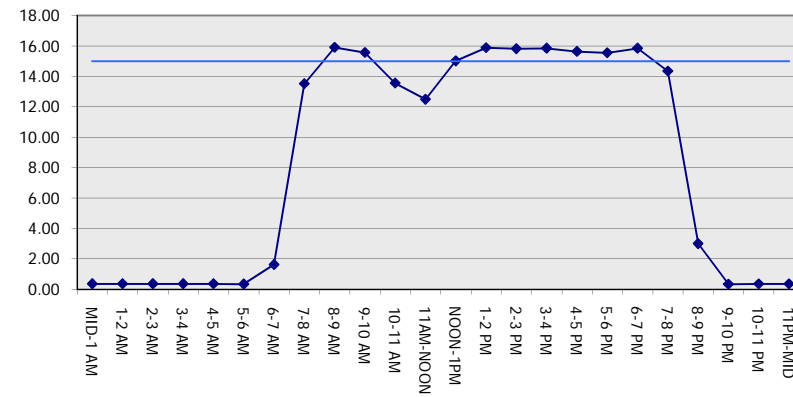
MON-THUR

NORTHBOUND DIRECTION

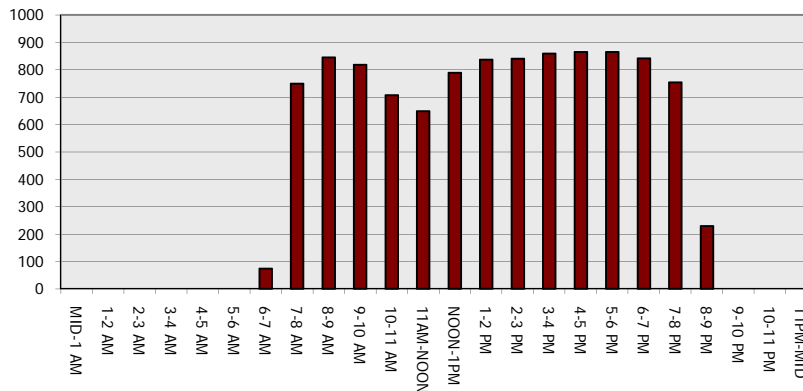
Main Route - Traffic Demand (Vehicles Per Hour)



Main Route Average Delay Per Vehicle (Minutes)



Main Route - Average Queue Length (Vehicles)



Main Route - Average Speed (MPH)

