

IH 43: SILVER SPRING DR TO STH 190 (MILWAUKEE COUNTY) CONTINUOUS (24 HOUR) 2 LANE CLOSURE NO DIVERSION ROUTE (MAX QUEUE METHOD)	OCTOBER
	Analyzed for 2009 Construction Season

SUMMARY OF TRAFFIC MODEL OUTPUT

FRIDAY SOUTHBOUND DIRECTION

TIME OF DAY	FLOWS AND CAPACITY IN VEH/HR							AVERAGE SPEEDS IN MPH			
	MAIN ROUTE		SITE CAPA CITY	FLOW		AV.DEL PER VEH (MINS)	AVERAGE QUEUE (VEH)	MAIN ROUTE		SITE	
	DEMAND FLOW	PCT HEAVY		MAIN ROUTE	'DIVER TED'			WITHOUT WORK ZONE	WITH WORK ZONE		
MID-1 AM	441	0.0	1500	441	0	0.53	0	70.2	59.4	43.7	
1-2 AM	250	0.0	1500	250	0	0.50	0	70.2	59.8	44.5	
2-3 AM	210	0.0	1500	210	0	0.50	0	70.2	59.9	44.6	
3-4 AM	235	0.0	1500	235	0	0.50	0	70.2	59.9	44.5	
4-5 AM	517	0.0	1500	517	0	0.53	0	70.1	59.2	43.5	
5-6 AM	1429	0.0	1499	1429	0	1.78	41	68.9	43.0	36.2	
6-7 AM	3727	0.0	1499	1783	1945	15.43+	384	65.4	11.0	30.8	
7-8 AM	5613	0.0	1500	1500	4113	15.45+	400	52.5	10.6	30.8	
8-9 AM	4559	0.0	1500	1500	3059	15.92+	400	59.7	10.6	30.8	
9-10 AM	3428	0.0	1500	1500	1928	16.27+	400	66.4	10.6	30.8	
10-11 AM	3232	0.0	1500	1500	1732	16.28+	400	66.7	10.6	30.8	
11AM-NOON	3324	0.0	1500	1500	1824	16.28+	400	66.6	10.6	30.8	
NOON-1PM	3542	0.0	1500	1500	2042	16.26+	400	66.3	10.6	30.8	
1-2 PM	3689	0.0	1500	1500	2189	16.23+	400	65.6	10.6	30.8	
2-3 PM	4163	0.0	1500	1500	2663	16.07+	400	62.4	10.6	30.8	
3-4 PM	4456	0.0	1500	1500	2956	15.96+	400	60.4	10.6	30.8	
4-5 PM	4561	0.0	1500	1500	3061	15.92+	400	59.7	10.6	30.8	
5-6 PM	4494	0.0	1500	1500	2994	15.95+	400	60.2	10.6	30.8	
6-7 PM	3886	0.0	1500	1500	2386	16.17+	400	64.3	10.6	30.8	
7-8 PM	2733	0.0	1500	1500	1233	16.31+	400	67.3	10.6	30.8	
8-9 PM	2025	0.0	1500	1488	537	16.30+	398	68.2	10.6	30.8	
9-10 PM	1834	0.0	1499	1486	349	16.30+	398	68.4	10.6	30.8	
10-11 PM	1518	0.0	1499	1442	76	16.00+	390	68.9	10.7	30.8	
11PM-MID	1020	0.0	1499	1020	0	4.48	168	69.5	27.4	36.6	

+ INDICATES QUEUEING EXCEEDS USER-SPECIFIED MAXIMUM LIMIT

----- SITE BREAKDOWN DELAYS -----	
BREAKDOWN DURATION (MINS)	0
RANGE OF QUEUE DELAY - MIN (VEH-H) MAX	0.0
AV BREAKDOWNS PER DAY	0.00
AV QUEUE DELAY/DAY (VEH-H)	0.0
AV TOTAL DELAY/DAY (VEH-H)	0.0

----- SITE ACCIDENT DELAYS -----	
BREAKDOWN DURATION (MINS)	0
RANGE OF QUEUE DELAY - MIN (VEH-H) MAX	0
AV BREAKDOWNS PER DAY	0
AV QUEUE DELAY/DAY (VEH-H)	0
AV TOTAL DELAY/DAY (VEH-H)	0

AVERAGE ACCIDENT NUMBERS (PIA/DAY)	
MAIN ROUTE WITHOUT WORKS	0.0351
MAIN ROUTE WITH WORKS	0.0142
'DIVERSION'	0.0440
PIA: Personal Injury Accidents	
IMPACTS ON ROAD USERS	
ROAD USER COSTS PER DAY	\$219,630
CONGESTED HOURS PER DAY*	17

*Delays Exceeding User-Specified Maximum

IH 43: SILVER SPRING DR TO STH 190 (MILWAUKEE COUNTY)
CONTINUOUS (24 HOUR) 2 LANE CLOSURE
NO DIVERSION ROUTE (MAX QUEUE METHOD)

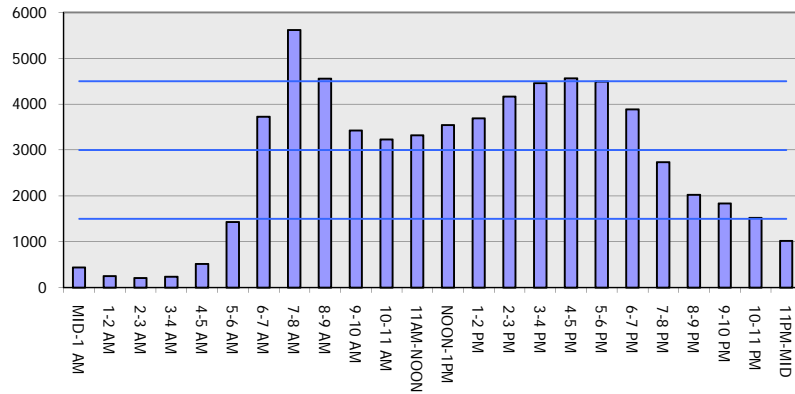
OCTOBER

Analyzed for 2009
 Construction Season

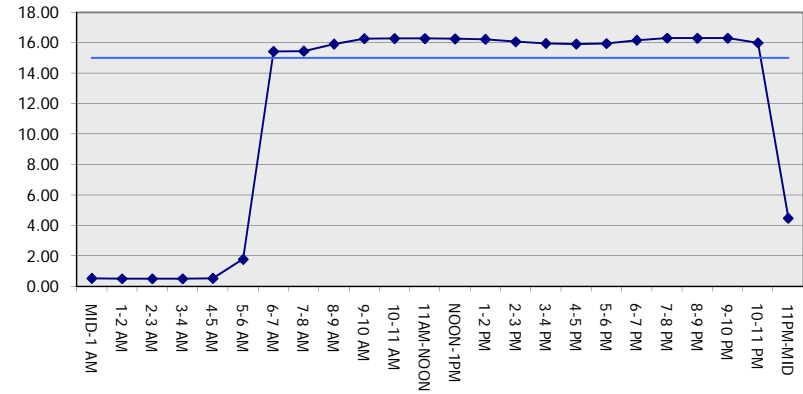
GRAPHICAL REPRESENTATION OF TRAFFIC MODEL INPUT AND OUTPUT

FRIDAY SOUTHBOUND DIRECTION

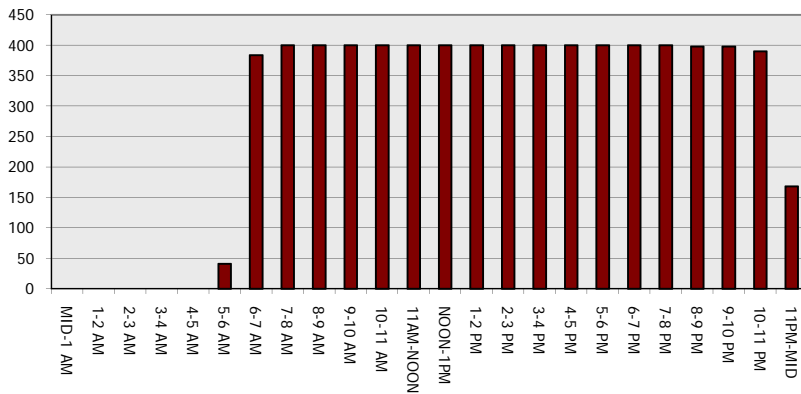
Main Route - Traffic Demand (Vehicles Per Hour)



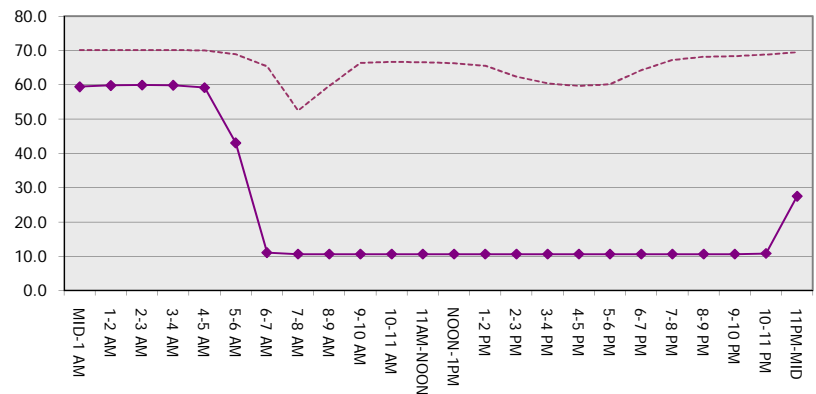
Main Route Average Delay Per Vehicle (Minutes)



Main Route - Average Queue Length (Vehicles)



Main Route - Average Speed (MPH)



IH 43: SILVER SPRING DR TO STH 190 (MILWAUKEE COUNTY) CONTINUOUS (24 HOUR) 2 LANE CLOSURE NO DIVERSION ROUTE (MAX QUEUE METHOD)	OCTOBER
	Analyzed for 2009 Construction Season

SUMMARY OF TRAFFIC MODEL OUTPUT

FRIDAY NORTHBOUND DIRECTION

TIME OF DAY	FLOWS AND CAPACITY IN VEH/HR							AVERAGE SPEEDS IN MPH			
	MAIN ROUTE		SITE CAPA CITY	FLOW		AV.DEL PER VEH (MINS)	AVERAGE QUEUE (VEH)	MAIN ROUTE		SITE	
	DEMAND FLOW	PCT HEAVY		MAIN ROUTE	'DIVER TED'			WITHOUT WORK ZONE	WITH WORK ZONE		
MID-1 AM	695	0.0	1500	695	0	0.81	11	69.9	54.6	42.7	
1-2 AM	497	0.0	1500	497	0	0.53	0	70.1	59.2	43.5	
2-3 AM	424	0.0	1500	424	0	0.52	0	70.2	59.4	43.8	
3-4 AM	391	0.0	1500	391	0	0.52	0	70.2	59.5	43.9	
4-5 AM	523	0.0	1500	523	0	0.54	0	70.1	59.2	43.4	
5-6 AM	1526	0.0	1499	1526	0	1.96	48	68.8	41.4	35.1	
6-7 AM	3395	0.0	1499	1723	1672	15.60+	385	66.5	10.9	30.8	
7-8 AM	4663	0.0	1500	1500	3163	15.88+	400	59.0	10.6	30.8	
8-9 AM	3986	0.0	1500	1500	2486	16.13+	400	63.7	10.6	30.8	
9-10 AM	3253	0.0	1500	1500	1753	16.28+	400	66.7	10.6	30.8	
10-11 AM	3428	0.0	1500	1500	1928	16.27+	400	66.4	10.6	30.8	
11AM-NOON	3760	0.0	1500	1500	2260	16.21+	400	65.1	10.6	30.8	
NOON-1PM	4097	0.0	1500	1500	2597	16.09+	400	62.8	10.6	30.8	
1-2 PM	4230	0.0	1500	1500	2730	16.05+	400	62.0	10.6	30.8	
2-3 PM	4895	0.0	1500	1500	3395	15.79+	400	57.4	10.6	30.8	
3-4 PM	5583	0.0	1500	1500	4083	15.47+	400	52.7	10.6	30.8	
4-5 PM	5842	0.0	1500	1500	4342	15.34+	400	50.9	10.6	30.8	
5-6 PM	5489	0.0	1500	1500	3989	15.52+	400	53.3	10.6	30.8	
6-7 PM	4020	0.0	1500	1500	2520	16.12+	400	63.4	10.6	30.8	
7-8 PM	2989	0.0	1500	1500	1489	16.30+	400	67.0	10.6	30.8	
8-9 PM	2487	0.0	1500	1500	987	16.32+	400	67.6	10.6	30.8	
9-10 PM	2433	0.0	1500	1500	933	16.33+	400	67.7	10.6	30.8	
10-11 PM	1841	0.0	1500	1500	341	16.36+	400	68.4	10.6	30.8	
11PM-MID	1214	0.0	1499	1214	0	12.02+	307	69.2	13.6	32.4	

+ INDICATES QUEUEING EXCEEDS USER-SPECIFIED MAXIMUM LIMIT

BREAKDOWN DURATION (MINS)	0
RANGE OF QUEUE DELAY - MIN (VEH-H) MAX	0.0
AV BREAKDOWNS PER DAY	0.00
AV QUEUE DELAY/DAY (VEH-H)	0.0
AV TOTAL DELAY/DAY (VEH-H)	0.0

BREAKDOWN DURATION (MINS)	0
RANGE OF QUEUE DELAY - MIN (VEH-H) MAX	0
AV BREAKDOWNS PER DAY	0
AV QUEUE DELAY/DAY (VEH-H)	0
AV TOTAL DELAY/DAY (VEH-H)	0

MAIN ROUTE WITHOUT WORKS	0.0388
MAIN ROUTE WITH WORKS	0.0147
'DIVERSION'	0.0509

PIA: Personal Injury Accidents

ROAD USER COSTS PER DAY	\$240,814
CONGESTED HOURS PER DAY*	18

*Delays Exceeding User-Specified Maximum

IH 43: SILVER SPRING DR TO STH 190 (MILWAUKEE COUNTY)
CONTINUOUS (24 HOUR) 2 LANE CLOSURE
NO DIVERSION ROUTE (MAX QUEUE METHOD)

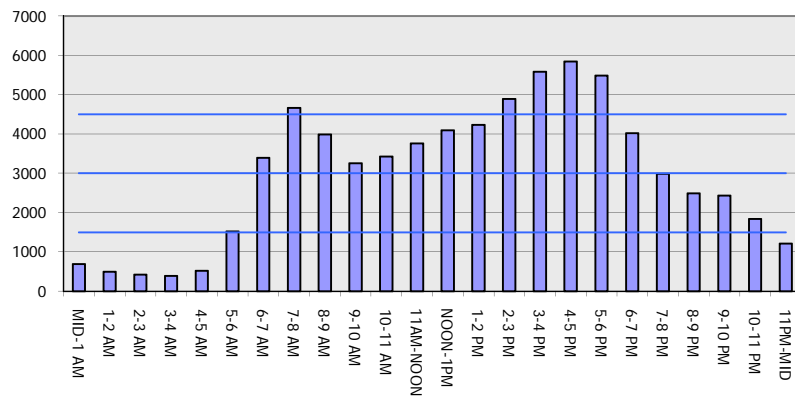
OCTOBER

Analyzed for 2009
 Construction Season

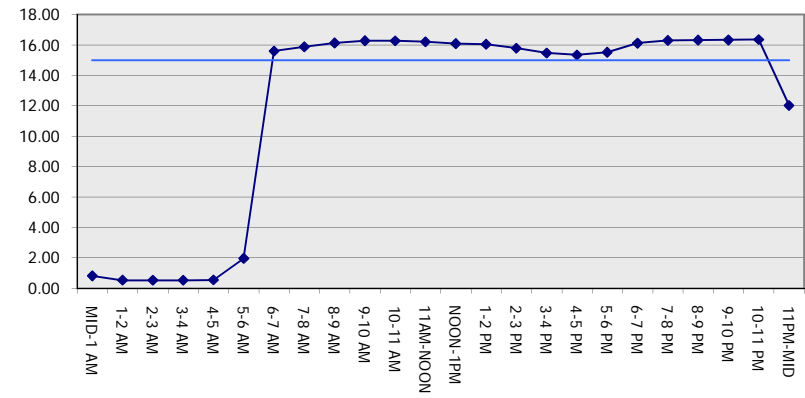
GRAPHICAL REPRESENTATION OF TRAFFIC MODEL INPUT AND OUTPUT

FRIDAY NORTHBOUND DIRECTION

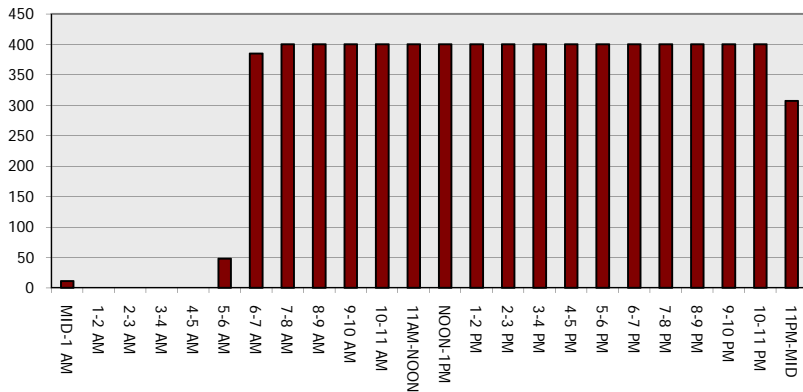
Main Route - Traffic Demand (Vehicles Per Hour)



Main Route Average Delay Per Vehicle (Minutes)



Main Route - Average Queue Length (Vehicles)



Main Route - Average Speed (MPH)

