

IH 43: SILVER SPRING DR TO STH 190 (MILWAUKEE COUNTY) CONTINUOUS (24 HOUR) CLOSURE NO DIVERSION ROUTE (MAX QUEUE METHOD)	AUGUST
	Analyzed for 2009 Construction Season

SUMMARY OF TRAFFIC MODEL OUTPUT

FRIDAY SOUTHBOUND DIRECTION

TIME OF DAY	FLOWS AND CAPACITY IN VEH/HR						AVERAGE SPEEDS IN MPH			
	MAIN ROUTE		SITE CAPA CITY	FLOW		AV.DEL PER VEH (MINS)	AVERAGE QUEUE (VEH)	MAIN ROUTE		SITE
	DEMAND FLOW	PCT HEAVY		MAIN ROUTE	'DIVER TED'			WITHOUT WORK ZONE	WITH WORK ZONE	
MID-1 AM	502	0.0	3000	502	0	0.36	0	70.1	62.4	49.7
1-2 AM	296	0.0	3000	296	0	0.36	0	70.2	62.5	49.7
2-3 AM	256	0.0	3000	256	0	0.36	0	70.2	62.5	49.7
3-4 AM	261	0.0	3000	261	0	0.36	0	70.2	62.5	49.7
4-5 AM	591	0.0	3000	591	0	0.36	0	70.0	62.3	49.7
5-6 AM	1442	0.0	3000	1442	0	0.34	0	68.9	61.8	49.7
6-7 AM	3346	0.0	2999	3346	0	1.84	91	66.6	41.6	37.6
7-8 AM	4525	0.0	3000	3554	971	14.13+	777	59.9	12.9	37.4
8-9 AM	4493	0.0	2999	2939	1555	15.85+	855	60.2	12.0	37.3
9-10 AM	3614	0.0	3000	2995	619	15.89+	838	66.1	12.2	37.3
10-11 AM	3405	0.0	2999	2996	409	15.89+	837	66.5	12.2	37.3
11AM-NOON	3630	0.0	2999	2997	632	15.89+	838	66.1	12.2	37.3
NOON-1PM	3792	0.0	2999	2998	794	15.84+	838	65.0	12.2	37.3
1-2 PM	3920	0.0	2999	2999	921	15.80+	839	64.1	12.2	37.3
2-3 PM	4219	0.0	2999	3001	1218	15.78+	844	62.0	12.1	37.3
3-4 PM	4031	0.0	3000	2998	1033	15.76+	839	63.3	12.1	37.3
4-5 PM	4673	0.0	2999	3013	1660	15.89+	862	58.9	12.0	37.3
5-6 PM	4597	0.0	3000	3001	1596	15.89+	860	59.4	12.0	37.3
6-7 PM	3762	0.0	3000	2995	767	15.85+	838	65.1	12.2	37.3
7-8 PM	2704	0.0	2999	2697	7	14.25+	749	67.4	12.8	37.3
8-9 PM	2113	0.0	2999	2113	0	2.29	187	68.1	38.6	46.5
9-10 PM	1938	0.0	3000	1938	0	0.34	0	68.3	61.4	49.7
10-11 PM	1732	0.0	3000	1732	0	0.34	0	68.6	61.5	49.7
11PM-MID	1263	0.0	3000	1263	0	0.35	0	69.2	61.9	49.7

+ INDICATES QUEUEING EXCEEDS USER-SPECIFIED MAXIMUM LIMIT

----- SITE BREAKDOWN DELAYS -----	
BREAKDOWN DURATION (MINS)	0
RANGE OF QUEUE DELAY - MIN (VEH-H) MAX	0.0
AV BREAKDOWNS PER DAY	0.00
AV QUEUE DELAY/DAY (VEH-H)	0.0
AV TOTAL DELAY/DAY (VEH-H)	0.0

----- SITE ACCIDENT DELAYS -----	
BREAKDOWN DURATION (MINS)	0
RANGE OF QUEUE DELAY - MIN (VEH-H) MAX	0
AV BREAKDOWNS PER DAY	0
AV QUEUE DELAY/DAY (VEH-H)	0
AV TOTAL DELAY/DAY (VEH-H)	0

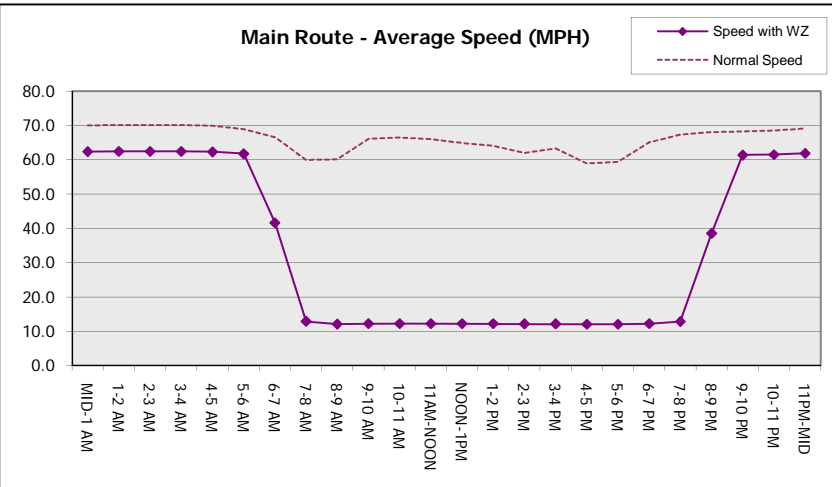
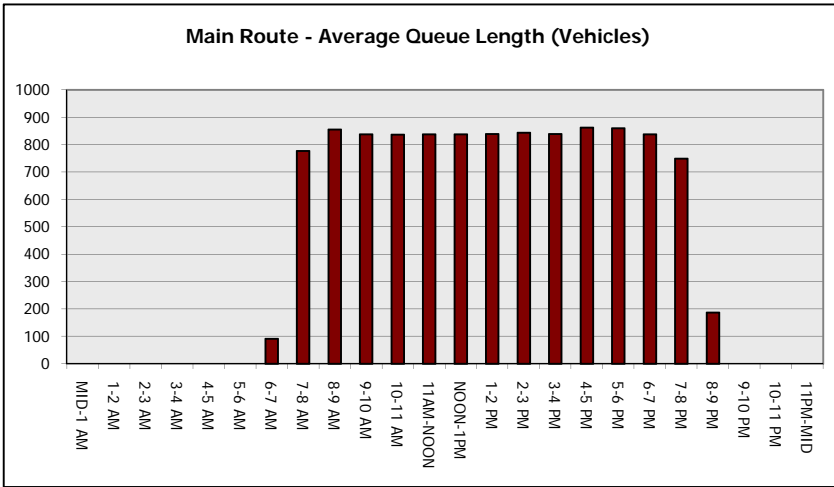
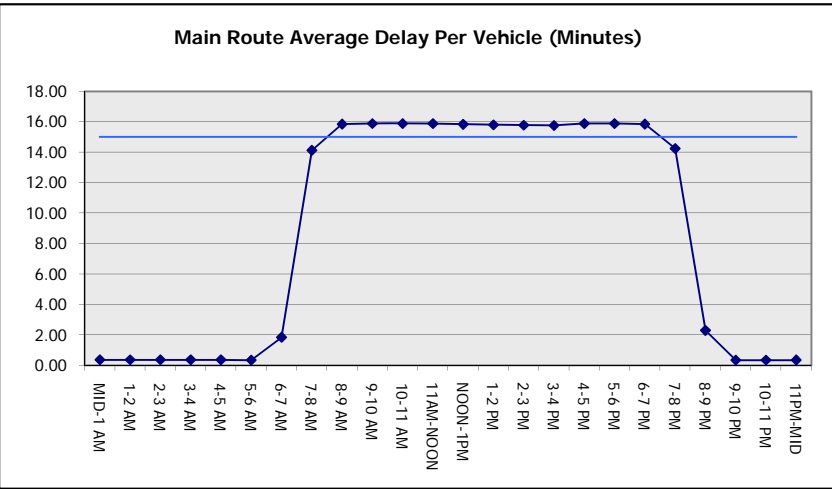
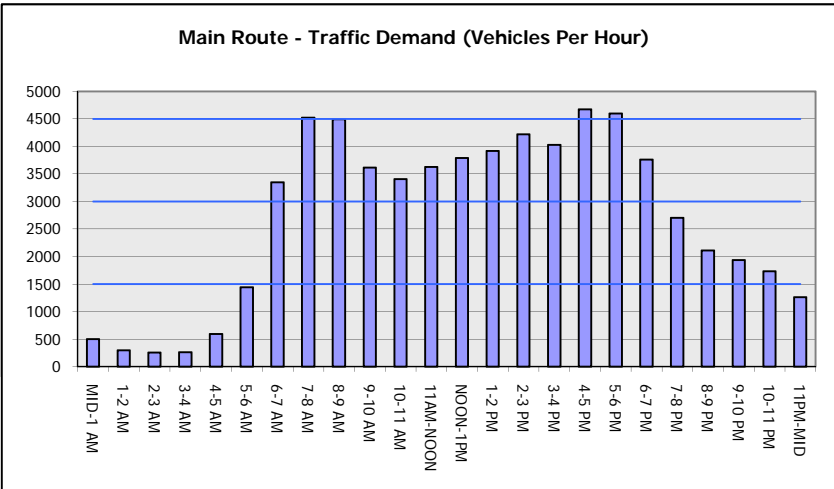
AVERAGE ACCIDENT NUMBERS (PIA/DAY)	
MAIN ROUTE WITHOUT WORKS	0.0352
MAIN ROUTE WITH WORKS	0.0251
'DIVERSION'	0.0153
PIA: Personal Injury Accidents	
IMPACTS ON ROAD USERS	
ROAD USER COSTS PER DAY	\$184,453
CONGESTED HOURS PER DAY*	13

*Delays Exceeding User-Specified Maximum

IH 43: SILVER SPRING DR TO STH 190 (MILWAUKEE COUNTY)
CONTINUOUS (24 HOUR) CLOSURE
NO DIVERSION ROUTE (MAX QUEUE METHOD)

AUGUST
 Analyzed for 2009
 Construction Season

GRAPHICAL REPRESENTATION OF TRAFFIC MODEL INPUT AND OUTPUT
FRIDAY SOUTHBOUND DIRECTION



IH 43: SILVER SPRING DR TO STH 190 (MILWAUKEE COUNTY) CONTINUOUS (24 HOUR) CLOSURE NO DIVERSION ROUTE (MAX QUEUE METHOD)	AUGUST
	Analyzed for 2009 Construction Season

SUMMARY OF TRAFFIC MODEL OUTPUT

FRIDAY NORTHBOUND DIRECTION

TIME OF DAY	FLOWS AND CAPACITY IN VEH/HR							AVERAGE SPEEDS IN MPH		
	MAIN ROUTE		SITE CAPA CITY	FLOW		AV.DEL PER VEH (MINS)	AVERAGE QUEUE (VEH)	MAIN ROUTE		SITE
	DEMAND FLOW	PCT HEAVY		MAIN ROUTE	'DIVER TED'			WITHOUT WORK ZONE	WITH WORK ZONE	
MID-1 AM	870	0.0	3000	870	0	0.35	0	69.7	62.2	49.7
1-2 AM	554	0.0	3000	554	0	0.36	0	70.0	62.3	49.7
2-3 AM	426	0.0	3000	426	0	0.36	0	70.2	62.5	49.7
3-4 AM	397	0.0	3000	397	0	0.36	0	70.2	62.5	49.7
4-5 AM	571	0.0	3000	571	0	0.36	0	70.0	62.3	49.7
5-6 AM	1577	0.0	3000	1577	0	0.34	0	68.7	61.7	49.7
6-7 AM	3356	0.0	2999	3356	0	2.06	100	66.6	39.7	37.3
7-8 AM	4055	0.0	3000	3485	569	13.23+	719	63.2	13.4	37.3
8-9 AM	4047	0.0	3000	3000	1047	15.77+	840	63.2	12.1	37.3
9-10 AM	3341	0.0	3000	2999	342	15.89+	836	66.6	12.2	37.3
10-11 AM	3371	0.0	2999	2999	372	15.89+	837	66.6	12.2	37.3
11AM-NOON	3849	0.0	2999	3000	849	15.82+	838	64.6	12.2	37.3
NOON-1PM	4092	0.0	3000	3002	1090	15.75+	840	62.9	12.1	37.3
1-2 PM	4290	0.0	3000	3008	1282	15.80+	847	61.5	12.1	37.3
2-3 PM	4534	0.0	3000	3009	1526	15.89+	858	59.9	12.0	37.3
3-4 PM	5133	0.0	3000	3000	2132	15.70+	864	55.8	12.0	37.3
4-5 PM	5470	0.0	3000	3000	2470	15.51+	864	53.5	12.0	37.3
5-6 PM	5135	0.0	3000	3000	2135	15.69+	864	55.8	12.0	37.3
6-7 PM	3704	0.0	3000	2995	708	15.86+	838	65.6	12.2	37.3
7-8 PM	2945	0.0	2999	2883	62	15.44+	811	67.1	12.3	37.3
8-9 PM	2488	0.0	2999	2488	0	9.12	492	67.6	17.0	38.2
9-10 PM	2565	0.0	3000	2565	0	1.22	54	67.6	48.1	43.3
10-11 PM	2739	0.0	3000	2739	0	0.56	0	67.3	56.8	41.7
11PM-MID	1806	0.0	3000	1806	0	0.34	0	68.5	61.5	49.7

+ INDICATES QUEUEING EXCEEDS USER-SPECIFIED MAXIMUM LIMIT

----- SITE BREAKDOWN DELAYS -----	
BREAKDOWN DURATION (MINS)	0
RANGE OF QUEUE DELAY - MIN (VEH-H) MAX	0.0
AV BREAKDOWNS PER DAY	0.00
AV QUEUE DELAY/DAY (VEH-H)	0.0
AV TOTAL DELAY/DAY (VEH-H)	0.0

----- SITE ACCIDENT DELAYS -----	
BREAKDOWN DURATION (MINS)	0
RANGE OF QUEUE DELAY - MIN (VEH-H) MAX	0
AV BREAKDOWNS PER DAY	0
AV QUEUE DELAY/DAY (VEH-H)	0
AV TOTAL DELAY/DAY (VEH-H)	0

AVERAGE ACCIDENT NUMBERS (PIA/DAY)	
MAIN ROUTE WITHOUT WORKS	0.0386
MAIN ROUTE WITH WORKS	0.0269
'DIVERSION'	0.0183

PIA: Personal Injury Accidents

ECONOMIC IMPACT ON ROAD USERS	
ROAD USER COSTS PER DAY	\$198,049
CONGESTED HOURS PER DAY*	13

*Delays Exceeding User-Specified Maximum

**IH 43: SILVER SPRING DR TO STH 190 (MILWAUKEE COUNTY)
CONTINUOUS (24 HOUR) CLOSURE
NO DIVERSION ROUTE (MAX QUEUE METHOD)**

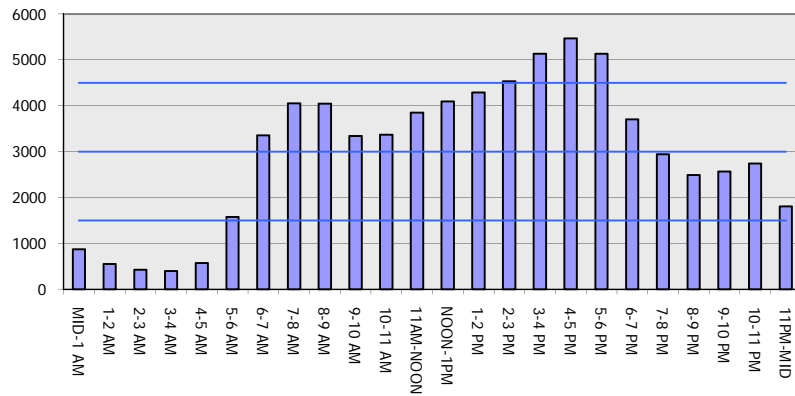
AUGUST

Analyzed for 2009
Construction Season

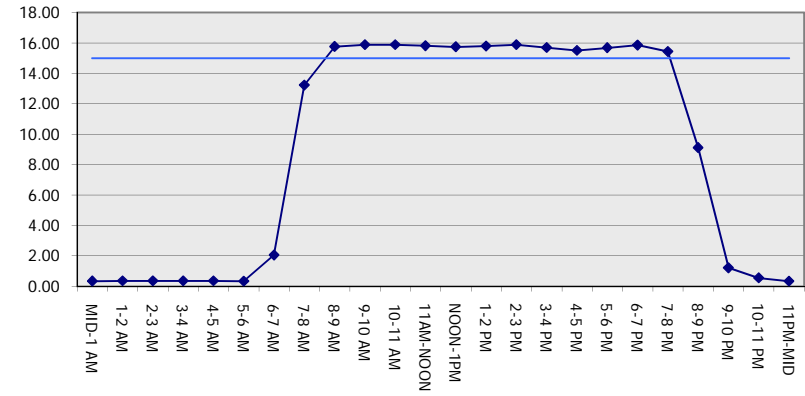
GRAPHICAL REPRESENTATION OF TRAFFIC MODEL INPUT AND OUTPUT

FRIDAY NORTHBOUND DIRECTION

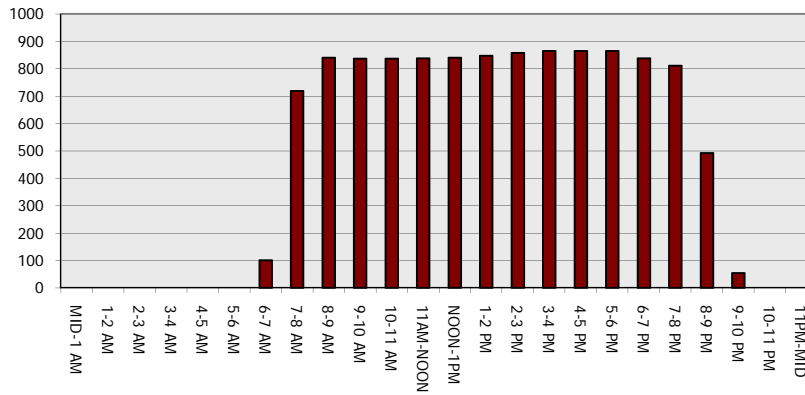
Main Route - Traffic Demand (Vehicles Per Hour)



Main Route Average Delay Per Vehicle (Minutes)



Main Route - Average Queue Length (Vehicles)



Main Route - Average Speed (MPH)

