

IH 794: LINCOLN AVE TO LINCOLN MEMORIAL DR (MILWAUKEE COUNTY) CONTINUOUS (24 HOUR) 2 LANE CLOSURE NO DIVERSION ROUTE (MAX QUEUE METHOD)	OCTOBER
	Analyzed for 2009 Construction Season

SUMMARY OF TRAFFIC MODEL OUTPUT

SUNDAY WESTBOUND DIRECTION

TIME OF DAY	FLOWS AND CAPACITY IN VEH/HR						AVERAGE SPEEDS IN MPH			
	MAIN ROUTE		SITE CAPA CITY	FLOW		AV.DEL PER VEH (MINS)	AVERAGE QUEUE (VEH)	MAIN ROUTE		SITE
	DEMAND FLOW	PCT HEAVY		MAIN ROUTE	'DIVER TED'			WITHOUT WORK ZONE	WITH WORK ZONE	
MID-1 AM	256	0.0	1500	256	0	0.50	0	70.2	54.2	44.5
1-2 AM	161	0.0	1500	161	0	0.49	0	70.2	54.5	44.8
2-3 AM	141	0.0	1500	141	0	0.49	0	70.2	54.5	44.9
3-4 AM	86	0.0	1500	86	0	0.48	0	70.2	54.7	45.1
4-5 AM	76	0.0	1500	76	0	0.48	0	70.2	54.8	45.2
5-6 AM	131	0.0	1500	131	0	0.49	0	70.2	54.6	45.0
6-7 AM	301	0.0	1500	301	0	0.51	0	70.2	54.1	44.3
7-8 AM	354	0.0	1500	354	0	0.52	0	70.2	53.9	44.1
8-9 AM	526	0.0	1500	526	0	0.54	0	70.0	53.4	43.4
9-10 AM	642	0.0	1500	642	0	0.55	0	69.9	53.0	43.0
10-11 AM	831	0.0	1500	831	0	0.57	0	69.7	52.4	42.3
11AM-NOON	884	0.0	1500	884	0	0.57	0	69.6	52.2	42.1
NOON-1PM	897	0.0	1500	897	0	0.58	0	69.6	52.2	42.0
1-2 PM	949	0.0	1500	949	0	0.58	0	69.6	52.0	41.9
2-3 PM	767	0.0	1500	767	0	0.56	0	69.8	52.6	42.5
3-4 PM	877	0.0	1500	877	0	0.57	0	69.6	52.2	42.1
4-5 PM	743	0.0	1500	743	0	0.56	0	69.8	52.7	42.6
5-6 PM	723	0.0	1500	723	0	0.56	0	69.9	52.7	42.7
6-7 PM	769	0.0	1500	769	0	0.56	0	69.8	52.6	42.5
7-8 PM	570	0.0	1500	570	0	0.54	0	70.0	53.2	43.2
8-9 PM	416	0.0	1500	416	0	0.52	0	70.2	53.7	43.8
9-10 PM	347	0.0	1500	347	0	0.51	0	70.2	53.9	44.1
10-11 PM	349	0.0	1500	349	0	0.52	0	70.2	53.9	44.1
11PM-MID	223	0.0	1500	223	0	0.50	0	70.2	54.3	44.6

----- SITE BREAKDOWN DELAYS -----	
BREAKDOWN DURATION (MINS)	0
RANGE OF QUEUE DELAY - MIN (VEH-H) MAX	0.0
AV BREAKDOWNS PER DAY	0.00
AV QUEUE DELAY/DAY (VEH-H)	0.0
AV TOTAL DELAY/DAY (VEH-H)	0.0

----- SITE ACCIDENT DELAYS -----	
BREAKDOWN DURATION (MINS)	0
RANGE OF QUEUE DELAY - MIN (VEH-H) MAX	0
AV BREAKDOWNS PER DAY	0
AV QUEUE DELAY/DAY (VEH-H)	0
AV TOTAL DELAY/DAY (VEH-H)	0

AVERAGE ACCIDENT NUMBERS (PIA/DAY)	
MAIN ROUTE WITHOUT WORKS	0.0038
MAIN ROUTE WITH WORKS	0.0030
'DIVERSION'	0.0000
PIA: Personal Injury Accidents	
IMPACTS ON ROAD USERS	
ROAD USER COSTS PER DAY	\$1,661
CONGESTED HOURS PER DAY*	0

*Delays Exceeding User-Specified Maximum

IH 794: LINCOLN AVE TO LINCOLN MEMORIAL DR (MILWAUKEE COUNTY)
CONTINUOUS (24 HOUR) 2 LANE CLOSURE
NO DIVERSION ROUTE (MAX QUEUE METHOD)

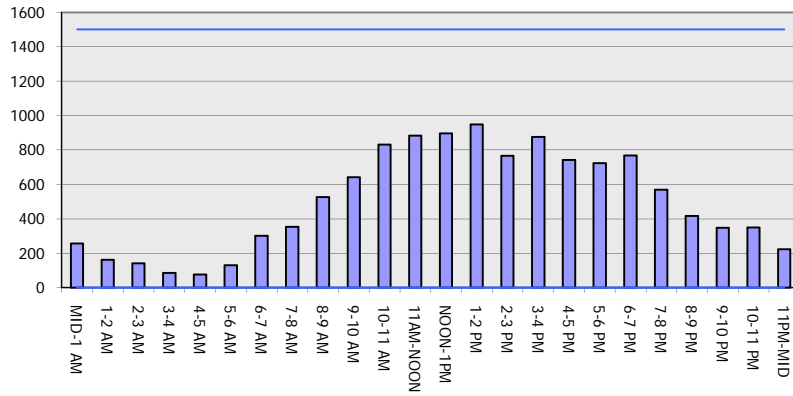
OCTOBER

Analyzed for 2009
 Construction Season

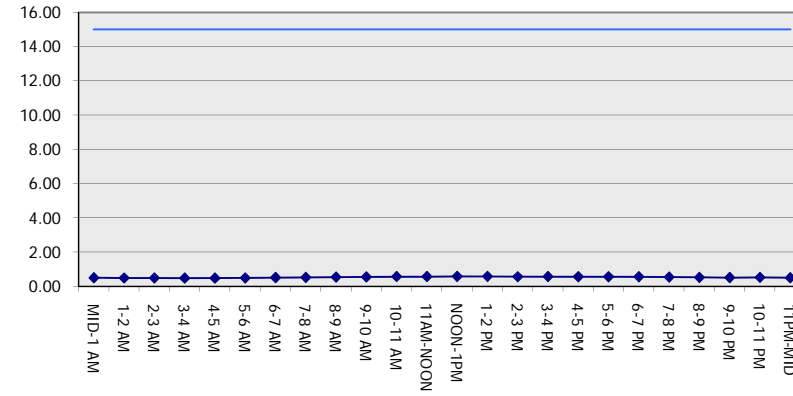
GRAPHICAL REPRESENTATION OF TRAFFIC MODEL INPUT AND OUTPUT

SUNDAY WESTBOUND DIRECTION

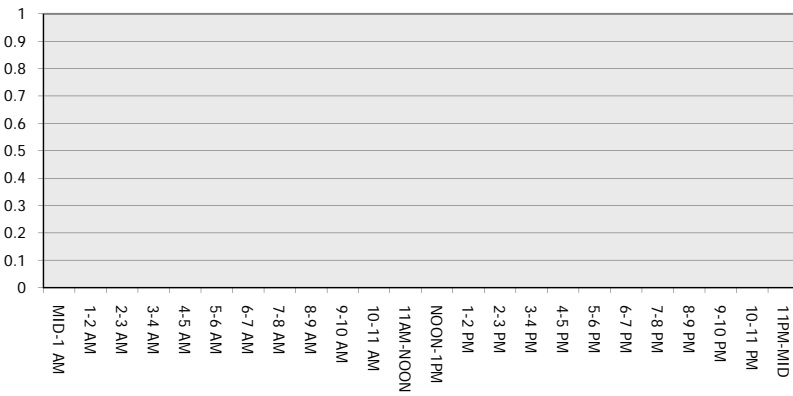
Main Route - Traffic Demand (Vehicles Per Hour)



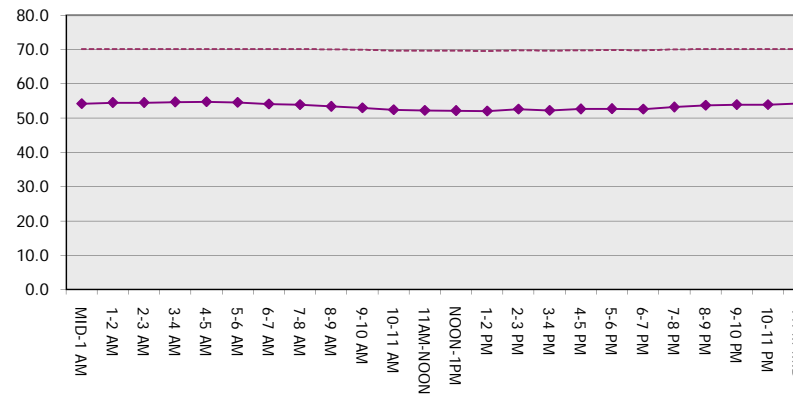
Main Route Average Delay Per Vehicle (Minutes)



Main Route - Average Queue Length (Vehicles)



Main Route - Average Speed (MPH)



IH 794: LINCOLN AVE TO LINCOLN MEMORIAL DR (MILWAUKEE COUNTY) CONTINUOUS (24 HOUR) 2 LANE CLOSURE NO DIVERSION ROUTE (MAX QUEUE METHOD)	OCTOBER
	Analyzed for 2009 Construction Season

SUMMARY OF TRAFFIC MODEL OUTPUT

SUNDAY EASTBOUND DIRECTION

TIME OF DAY	FLOWS AND CAPACITY IN VEH/HR						AVERAGE SPEEDS IN MPH			
	MAIN ROUTE		SITE CAPA CITY	FLOW		AV.DEL PER VEH (MINS)	AVERAGE QUEUE (VEH)	MAIN ROUTE		SITE
	DEMAND FLOW	PCT HEAVY		MAIN ROUTE	'DIVER TED'			WITHOUT WORK ZONE	WITH WORK ZONE	
MID-1 AM	449	0.0	1500	449	0	0.53	0	70.2	53.7	43.7
1-2 AM	305	0.0	1500	305	0	0.51	0	70.2	54.1	44.3
2-3 AM	324	0.0	1500	324	0	0.51	0	70.2	54.0	44.2
3-4 AM	186	0.0	1500	186	0	0.50	0	70.2	54.4	44.7
4-5 AM	94	0.0	1500	94	0	0.48	0	70.2	54.7	45.1
5-6 AM	113	0.0	1500	113	0	0.49	0	70.2	54.6	45.0
6-7 AM	181	0.0	1500	181	0	0.49	0	70.2	54.5	44.8
7-8 AM	220	0.0	1500	220	0	0.50	0	70.2	54.3	44.6
8-9 AM	274	0.0	1500	274	0	0.51	0	70.2	54.2	44.4
9-10 AM	413	0.0	1500	413	0	0.52	0	70.2	53.7	43.8
10-11 AM	571	0.0	1500	571	0	0.54	0	70.0	53.2	43.2
11AM-NOON	792	0.0	1500	792	0	0.56	0	69.7	52.5	42.4
NOON-1PM	1000	0.0	1500	1000	0	0.59	0	69.5	51.9	41.7
1-2 PM	961	0.0	1500	961	0	0.58	0	69.6	52.0	41.8
2-3 PM	967	0.0	1500	967	0	0.58	0	69.6	52.0	41.8
3-4 PM	1003	0.0	1500	1003	0	0.59	0	69.5	51.9	41.7
4-5 PM	1029	0.0	1500	1029	0	0.59	0	69.4	51.8	41.5
5-6 PM	938	0.0	1500	938	0	0.58	0	69.6	52.0	41.9
6-7 PM	884	0.0	1500	884	0	0.57	0	69.6	52.2	42.1
7-8 PM	668	0.0	1500	668	0	0.55	0	69.9	52.9	42.8
8-9 PM	493	0.0	1500	493	0	0.53	0	70.1	53.5	43.5
9-10 PM	451	0.0	1500	451	0	0.53	0	70.2	53.6	43.7
10-11 PM	403	0.0	1500	403	0	0.52	0	70.2	53.8	43.9
11PM-MID	357	0.0	1500	357	0	0.52	0	70.2	53.9	44.0

----- SITE BREAKDOWN DELAYS -----	
BREAKDOWN DURATION (MINS)	0
RANGE OF QUEUE DELAY - MIN (VEH-H) MAX	0.0
AV BREAKDOWNS PER DAY	0.00
AV QUEUE DELAY/DAY (VEH-H)	0.0
AV TOTAL DELAY/DAY (VEH-H)	0.0

----- SITE ACCIDENT DELAYS -----	
BREAKDOWN DURATION (MINS)	0
RANGE OF QUEUE DELAY - MIN (VEH-H) MAX	0
AV BREAKDOWNS PER DAY	0
AV QUEUE DELAY/DAY (VEH-H)	0
AV TOTAL DELAY/DAY (VEH-H)	0

AVERAGE ACCIDENT NUMBERS (PIA/DAY)	
MAIN ROUTE WITHOUT WORKS	0.0042
MAIN ROUTE WITH WORKS	0.0033
'DIVERSION'	0.0000

PIA: Personal Injury Accidents

ECONOMIC IMPACT ON ROAD USERS	
ROAD USER COSTS PER DAY	\$1,827
CONGESTED HOURS PER DAY*	0

*Delays Exceeding User-Specified Maximum

IH 794: LINCOLN AVE TO LINCOLN MEMORIAL DR (MILWAUKEE COUNTY)
CONTINUOUS (24 HOUR) 2 LANE CLOSURE
NO DIVERSION ROUTE (MAX QUEUE METHOD)

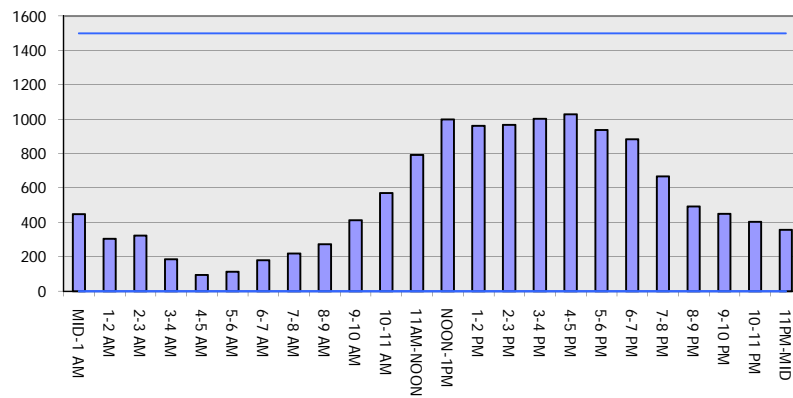
OCTOBER

Analyzed for 2009
 Construction Season

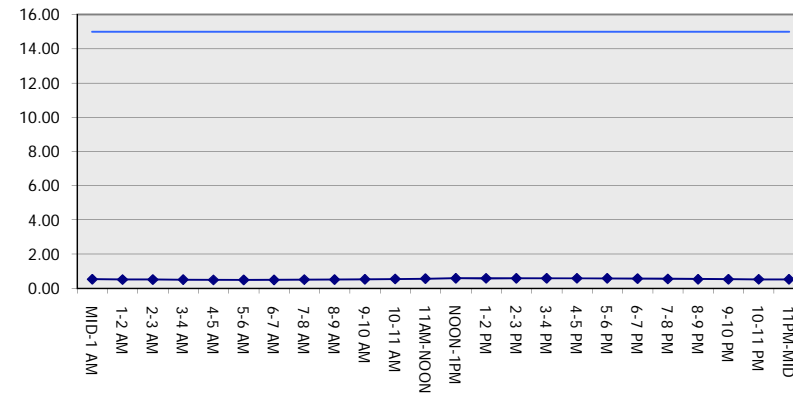
GRAPHICAL REPRESENTATION OF TRAFFIC MODEL INPUT AND OUTPUT

SUNDAY EASTBOUND DIRECTION

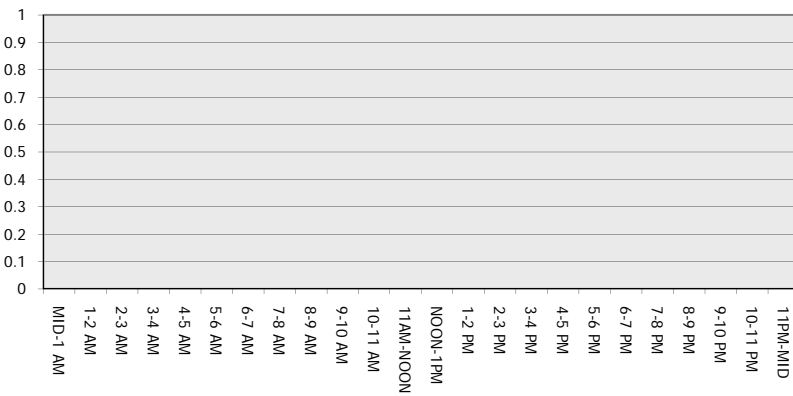
Main Route - Traffic Demand (Vehicles Per Hour)



Main Route Average Delay Per Vehicle (Minutes)



Main Route - Average Queue Length (Vehicles)



Main Route - Average Speed (MPH)

