

IH 794: LINCOLN AVE TO LINCOLN MEMORIAL DR (MILWAUKEE COUNTY) CONTINUOUS (24 HOUR) CLOSURE NO DIVERSION ROUTE (MAX QUEUE METHOD)	OCTOBER
	Analyzed for 2009 Construction Season

SUMMARY OF TRAFFIC MODEL OUTPUT

SUNDAY WESTBOUND DIRECTION

TIME OF DAY	FLOWS AND CAPACITY IN VEH/HR						AVERAGE SPEEDS IN MPH			
	MAIN ROUTE		SITE CAPA CITY	FLOW		AV.DEL PER VEH (MINS)	AVERAGE QUEUE (VEH)	MAIN ROUTE		SITE
	DEMAND FLOW	PCT HEAVY		MAIN ROUTE	'DIVER TED'			WITHOUT WORK ZONE	WITH WORK ZONE	
MID-1 AM	256	0.0	3000	256	0	0.36	0	70.2	58.0	49.7
1-2 AM	161	0.0	3000	161	0	0.36	0	70.2	58.0	49.7
2-3 AM	141	0.0	3000	141	0	0.36	0	70.2	58.0	49.7
3-4 AM	86	0.0	3000	86	0	0.36	0	70.2	58.0	49.7
4-5 AM	76	0.0	3000	76	0	0.36	0	70.2	58.0	49.7
5-6 AM	131	0.0	3000	131	0	0.36	0	70.2	58.0	49.7
6-7 AM	301	0.0	3000	301	0	0.36	0	70.2	58.0	49.7
7-8 AM	354	0.0	3000	354	0	0.36	0	70.2	58.0	49.7
8-9 AM	526	0.0	3000	526	0	0.36	0	70.0	57.9	49.7
9-10 AM	642	0.0	3000	642	0	0.36	0	69.9	57.9	49.7
10-11 AM	831	0.0	3000	831	0	0.35	0	69.7	57.8	49.7
11AM-NOON	884	0.0	3000	884	0	0.35	0	69.6	57.8	49.7
NOON-1PM	897	0.0	3000	897	0	0.35	0	69.6	57.8	49.7
1-2 PM	949	0.0	3000	949	0	0.35	0	69.6	57.8	49.7
2-3 PM	767	0.0	3000	767	0	0.35	0	69.8	57.9	49.7
3-4 PM	877	0.0	3000	877	0	0.35	0	69.6	57.8	49.7
4-5 PM	743	0.0	3000	743	0	0.35	0	69.8	57.9	49.7
5-6 PM	723	0.0	3000	723	0	0.35	0	69.9	57.9	49.7
6-7 PM	769	0.0	3000	769	0	0.35	0	69.8	57.9	49.7
7-8 PM	570	0.0	3000	570	0	0.36	0	70.0	57.9	49.7
8-9 PM	416	0.0	3000	416	0	0.36	0	70.2	58.0	49.7
9-10 PM	347	0.0	3000	347	0	0.36	0	70.2	58.0	49.7
10-11 PM	349	0.0	3000	349	0	0.36	0	70.2	58.0	49.7
11PM-MID	223	0.0	3000	223	0	0.36	0	70.2	58.0	49.7

----- SITE BREAKDOWN DELAYS -----	
BREAKDOWN DURATION (MINS)	0
RANGE OF QUEUE DELAY - MIN (VEH-H) MAX	0.0
AV BREAKDOWNS PER DAY	0.00
AV QUEUE DELAY/DAY (VEH-H)	0.0
AV TOTAL DELAY/DAY (VEH-H)	0.0

----- SITE ACCIDENT DELAYS -----	
BREAKDOWN DURATION (MINS)	0
RANGE OF QUEUE DELAY - MIN (VEH-H) MAX	0
AV BREAKDOWNS PER DAY	0
AV QUEUE DELAY/DAY (VEH-H)	0
AV TOTAL DELAY/DAY (VEH-H)	0

AVERAGE ACCIDENT NUMBERS (PIA/DAY)	
MAIN ROUTE WITHOUT WORKS	0.0038
MAIN ROUTE WITH WORKS	0.0030
'DIVERSION'	0.0000
PIA: Personal Injury Accidents	
IMPACTS ON ROAD USERS	
ROAD USER COSTS PER DAY	\$1,039
CONGESTED HOURS PER DAY*	0

*Delays Exceeding User-Specified Maximum

IH 794: LINCOLN AVE TO LINCOLN MEMORIAL DR (MILWAUKEE COUNTY)
CONTINUOUS (24 HOUR) CLOSURE
NO DIVERSION ROUTE (MAX QUEUE METHOD)

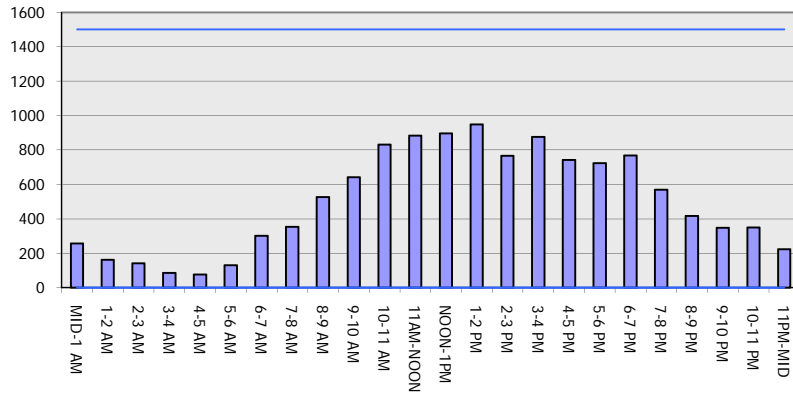
OCTOBER

Analyzed for 2009
 Construction Season

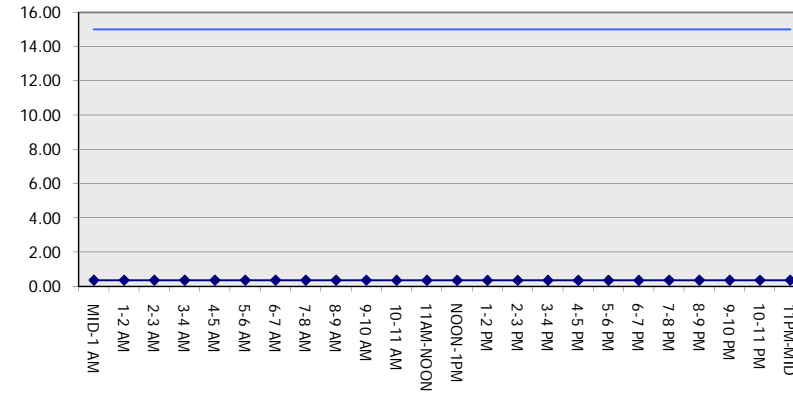
GRAPHICAL REPRESENTATION OF TRAFFIC MODEL INPUT AND OUTPUT

SUNDAY WESTBOUND DIRECTION

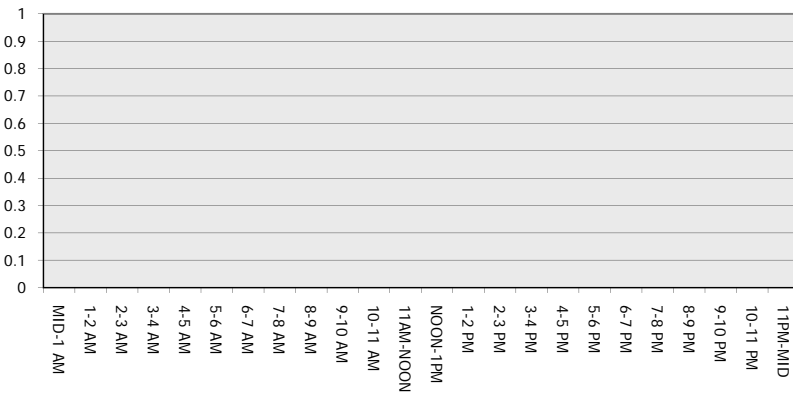
Main Route - Traffic Demand (Vehicles Per Hour)



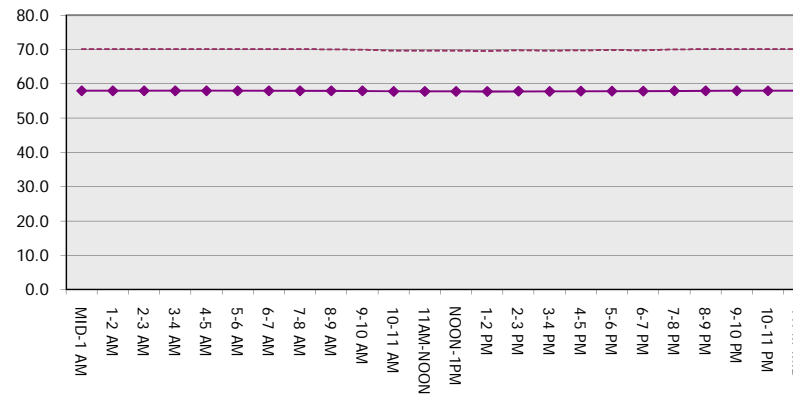
Main Route Average Delay Per Vehicle (Minutes)



Main Route - Average Queue Length (Vehicles)



Main Route - Average Speed (MPH)



IH 794: LINCOLN AVE TO LINCOLN MEMORIAL DR (MILWAUKEE COUNTY) CONTINUOUS (24 HOUR) CLOSURE NO DIVERSION ROUTE (MAX QUEUE METHOD)	OCTOBER
	Analyzed for 2009 Construction Season

SUMMARY OF TRAFFIC MODEL OUTPUT

SUNDAY EASTBOUND DIRECTION

TIME OF DAY	FLOWS AND CAPACITY IN VEH/HR							AVERAGE SPEEDS IN MPH		
	MAIN ROUTE		SITE CAPA CITY	FLOW		AV.DEL PER VEH (MINS)	AVERAGE QUEUE (VEH)	MAIN ROUTE		SITE
	DEMAND FLOW	PCT HEAVY		MAIN ROUTE	'DIVER TED'			WITHOUT WORK ZONE	WITH WORK ZONE	
MID-1 AM	449	0.0	3000	449	0	0.36	0	70.2	58.0	49.7
1-2 AM	305	0.0	3000	305	0	0.36	0	70.2	58.0	49.7
2-3 AM	324	0.0	3000	324	0	0.36	0	70.2	58.0	49.7
3-4 AM	186	0.0	3000	186	0	0.36	0	70.2	58.0	49.7
4-5 AM	94	0.0	3000	94	0	0.36	0	70.2	58.0	49.7
5-6 AM	113	0.0	3000	113	0	0.36	0	70.2	58.0	49.7
6-7 AM	181	0.0	3000	181	0	0.36	0	70.2	58.0	49.7
7-8 AM	220	0.0	3000	220	0	0.36	0	70.2	58.0	49.7
8-9 AM	274	0.0	3000	274	0	0.36	0	70.2	58.0	49.7
9-10 AM	413	0.0	3000	413	0	0.36	0	70.2	58.0	49.7
10-11 AM	571	0.0	3000	571	0	0.36	0	70.0	57.9	49.7
11AM-NOON	792	0.0	3000	792	0	0.35	0	69.7	57.9	49.7
NOON-1PM	1000	0.0	3000	1000	0	0.35	0	69.5	57.8	49.7
1-2 PM	961	0.0	3000	961	0	0.35	0	69.6	57.8	49.7
2-3 PM	967	0.0	3000	967	0	0.35	0	69.6	57.8	49.7
3-4 PM	1003	0.0	3000	1003	0	0.35	0	69.5	57.8	49.7
4-5 PM	1029	0.0	3000	1029	0	0.35	0	69.4	57.8	49.7
5-6 PM	938	0.0	3000	938	0	0.35	0	69.6	57.8	49.7
6-7 PM	884	0.0	3000	884	0	0.35	0	69.6	57.8	49.7
7-8 PM	668	0.0	3000	668	0	0.36	0	69.9	57.9	49.7
8-9 PM	493	0.0	3000	493	0	0.36	0	70.1	58.0	49.7
9-10 PM	451	0.0	3000	451	0	0.36	0	70.2	58.0	49.7
10-11 PM	403	0.0	3000	403	0	0.36	0	70.2	58.0	49.7
11PM-MID	357	0.0	3000	357	0	0.36	0	70.2	58.0	49.7

----- SITE BREAKDOWN DELAYS -----	
BREAKDOWN DURATION (MINS)	0
RANGE OF QUEUE DELAY - MIN (VEH-H) MAX	0.0
AV BREAKDOWNS PER DAY	0.00
AV QUEUE DELAY/DAY (VEH-H)	0.0
AV TOTAL DELAY/DAY (VEH-H)	0.0

----- SITE ACCIDENT DELAYS -----	
BREAKDOWN DURATION (MINS)	0
RANGE OF QUEUE DELAY - MIN (VEH-H) MAX	0
AV BREAKDOWNS PER DAY	0
AV QUEUE DELAY/DAY (VEH-H)	0
AV TOTAL DELAY/DAY (VEH-H)	0

AVERAGE ACCIDENT NUMBERS (PIA/DAY)	
MAIN ROUTE WITHOUT WORKS	0.0042
MAIN ROUTE WITH WORKS	0.0033
'DIVERSION'	0.0000

PIA: Personal Injury Accidents

ECONOMIC IMPACT ON ROAD USERS	
ROAD USER COSTS PER DAY	\$1,132
CONGESTED HOURS PER DAY*	0

*Delays Exceeding User-Specified Maximum

IH 794: LINCOLN AVE TO LINCOLN MEMORIAL DR (MILWAUKEE COUNTY)
CONTINUOUS (24 HOUR) CLOSURE
NO DIVERSION ROUTE (MAX QUEUE METHOD)

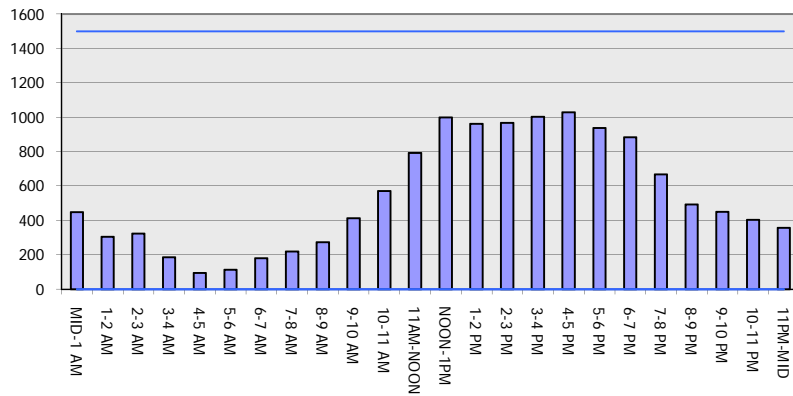
OCTOBER

Analyzed for 2009
 Construction Season

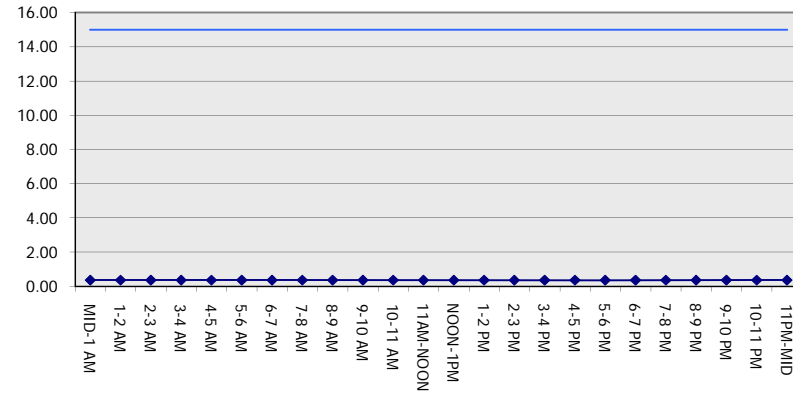
GRAPHICAL REPRESENTATION OF TRAFFIC MODEL INPUT AND OUTPUT

SUNDAY EASTBOUND DIRECTION

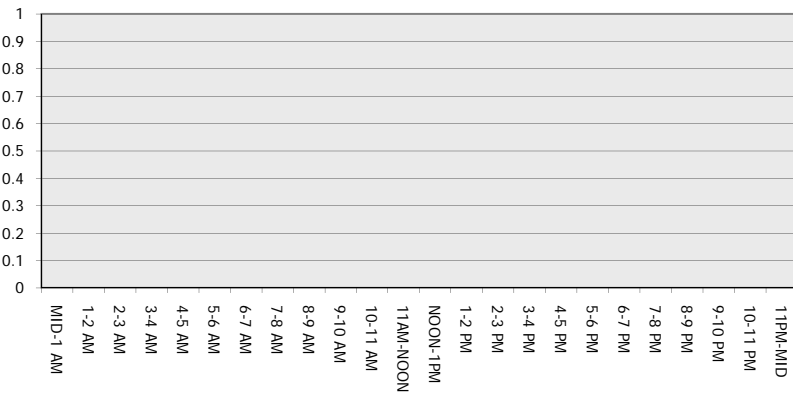
Main Route - Traffic Demand (Vehicles Per Hour)



Main Route Average Delay Per Vehicle (Minutes)



Main Route - Average Queue Length (Vehicles)



Main Route - Average Speed (MPH)

