

<b>IH 794: LINCOLN AVE TO LINCOLN MEMORIAL DR (MILWAUKEE COUNTY)</b> <b>CONTINUOUS (24 HOUR) 2 LANE CLOSURE</b> <b>NO DIVERSION ROUTE (MAX QUEUE METHOD)</b>	<b>OCTOBER</b>
	Analyzed for 2009 Construction Season

**SUMMARY OF TRAFFIC MODEL OUTPUT**

SATURDAY WESTBOUND DIRECTION

TIME OF DAY	FLOWS AND CAPACITY IN VEH/HR						AVERAGE SPEEDS IN MPH			
	MAIN ROUTE		SITE CAPA CITY	FLOW		AV.DEL PER VEH (MINS)	AVERAGE QUEUE (VEH)	MAIN ROUTE		SITE
	DEMAND FLOW	PCT HEAVY		MAIN ROUTE	'DIVER TED'			WITHOUT WORK ZONE	WITH WORK ZONE	
MID-1 AM	250	0.0	1500	250	0	0.50	0	70.2	54.2	44.5
1-2 AM	147	0.0	1500	147	0	0.49	0	70.2	54.5	44.9
2-3 AM	121	0.0	1500	121	0	0.49	0	70.2	54.6	45.0
3-4 AM	91	0.0	1500	91	0	0.48	0	70.2	54.7	45.1
4-5 AM	105	0.0	1500	105	0	0.49	0	70.2	54.6	45.1
5-6 AM	279	0.0	1500	279	0	0.51	0	70.2	54.2	44.3
6-7 AM	503	0.0	1500	503	0	0.53	0	70.1	53.5	43.5
7-8 AM	688	0.0	1500	688	0	0.55	0	69.9	52.8	42.8
8-9 AM	892	0.0	1500	892	0	0.58	0	69.6	52.2	42.0
9-10 AM	903	0.0	1500	903	0	0.58	0	69.6	52.2	42.0
10-11 AM	1024	0.0	1500	1024	0	0.59	0	69.5	51.8	41.6
11AM-NOON	1074	0.0	1500	1074	0	0.59	0	69.4	51.6	41.4
NOON-1PM	1088	0.0	1500	1088	0	0.60	0	69.4	51.6	41.4
1-2 PM	1090	0.0	1500	1090	0	0.60	0	69.4	51.6	41.4
2-3 PM	1004	0.0	1500	1004	0	0.59	0	69.5	51.9	41.7
3-4 PM	994	0.0	1500	994	0	0.59	0	69.5	51.9	41.7
4-5 PM	953	0.0	1500	953	0	0.58	0	69.6	52.0	41.9
5-6 PM	943	0.0	1500	943	0	0.58	0	69.6	52.0	41.9
6-7 PM	908	0.0	1500	908	0	0.58	0	69.6	52.2	42.0
7-8 PM	789	0.0	1500	789	0	0.56	0	69.7	52.5	42.4
8-9 PM	591	0.0	1500	591	0	0.54	0	70.0	53.2	43.2
9-10 PM	588	0.0	1500	588	0	0.54	0	70.0	53.2	43.2
10-11 PM	542	0.0	1500	542	0	0.54	0	70.0	53.3	43.3
11PM-MID	376	0.0	1500	376	0	0.52	0	70.2	53.8	44.0

**\*----- SITE BREAKDOWN DELAYS -----\***

BREAKDOWN DURATION (MINS)	0
RANGE OF QUEUE DELAY - MIN (VEH-H) MAX	0.0
AV BREAKDOWNS PER DAY	0.00
AV QUEUE DELAY/DAY (VEH-H)	0.0
AV TOTAL DELAY/DAY (VEH-H)	0.0

**\*----- SITE ACCIDENT DELAYS -----\***

BREAKDOWN DURATION (MINS)	0
RANGE OF QUEUE DELAY - MIN (VEH-H) MAX	0
AV BREAKDOWNS PER DAY	0
AV QUEUE DELAY/DAY (VEH-H)	0
AV TOTAL DELAY/DAY (VEH-H)	0

**AVERAGE ACCIDENT NUMBERS (PIA/DAY)**

MAIN ROUTE WITHOUT WORKS	0.0051
MAIN ROUTE WITH WORKS	0.0040
'DIVERSION'	0.0000

PIA: Personal Injury Accidents

**IMPACTS ON ROAD USERS**

ROAD USER COSTS PER DAY	\$2,264
CONGESTED HOURS PER DAY*	0

\*Delays Exceeding User-Specified Maximum

**IH 794: LINCOLN AVE TO LINCOLN MEMORIAL DR (MILWAUKEE COUNTY)**  
**CONTINUOUS (24 HOUR) 2 LANE CLOSURE**  
**NO DIVERSION ROUTE (MAX QUEUE METHOD)**

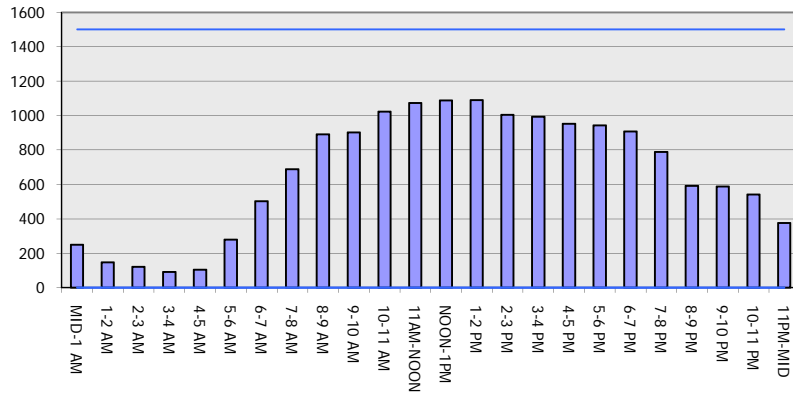
**OCTOBER**

Analyzed for 2009  
 Construction Season

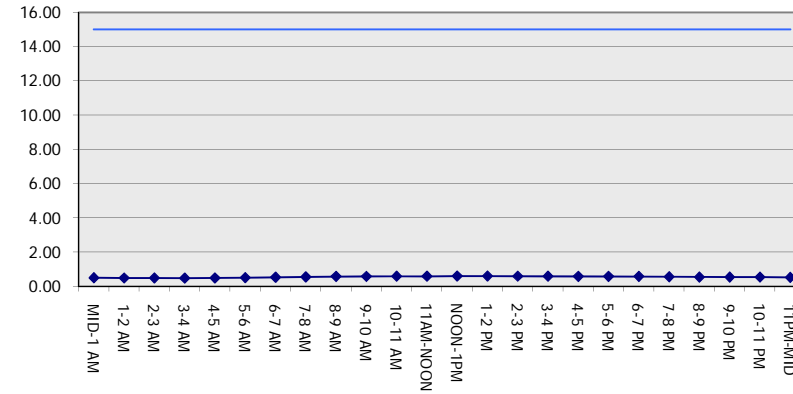
**GRAPHICAL REPRESENTATION OF TRAFFIC MODEL INPUT AND OUTPUT**

**SATURDAY WESTBOUND DIRECTION**

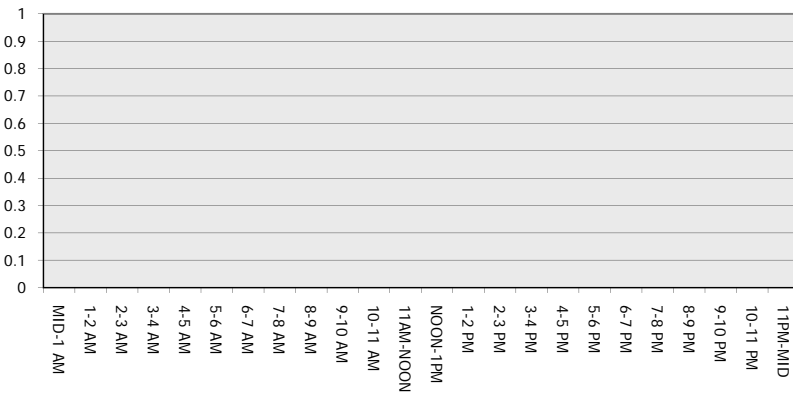
**Main Route - Traffic Demand (Vehicles Per Hour)**



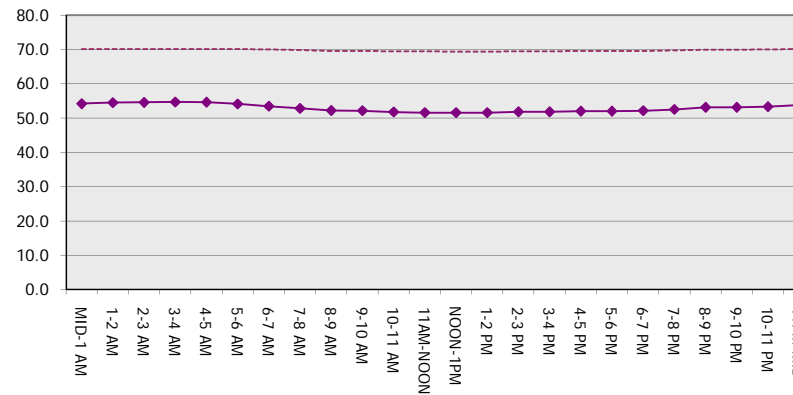
**Main Route Average Delay Per Vehicle (Minutes)**



**Main Route - Average Queue Length (Vehicles)**



**Main Route - Average Speed (MPH)**



<b>IH 794: LINCOLN AVE TO LINCOLN MEMORIAL DR (MILWAUKEE COUNTY)</b> <b>CONTINUOUS (24 HOUR) 2 LANE CLOSURE</b> <b>NO DIVERSION ROUTE (MAX QUEUE METHOD)</b>	<b>OCTOBER</b>
	Analyzed for 2009 Construction Season

**SUMMARY OF TRAFFIC MODEL OUTPUT**

SATURDAY EASTBOUND DIRECTION

TIME OF DAY	FLOWS AND CAPACITY IN VEH/HR							AVERAGE SPEEDS IN MPH		
	MAIN ROUTE		SITE CAPA CITY	FLOW		AV.DEL PER VEH (MINS)	AVERAGE QUEUE (VEH)	MAIN ROUTE		SITE
	DEMAND FLOW	PCT HEAVY		MAIN ROUTE	'DIVER TED'			WITHOUT WORK ZONE	WITH WORK ZONE	
MID-1 AM	429	0.0	1500	429	0	0.53	0	70.2	53.7	43.8
1-2 AM	251	0.0	1500	251	0	0.50	0	70.2	54.2	44.5
2-3 AM	269	0.0	1500	269	0	0.51	0	70.2	54.2	44.4
3-4 AM	150	0.0	1500	150	0	0.49	0	70.2	54.5	44.9
4-5 AM	132	0.0	1500	132	0	0.49	0	70.2	54.6	45.0
5-6 AM	180	0.0	1500	180	0	0.49	0	70.2	54.5	44.8
6-7 AM	277	0.0	1500	277	0	0.51	0	70.2	54.2	44.4
7-8 AM	347	0.0	1500	347	0	0.51	0	70.2	53.9	44.1
8-9 AM	512	0.0	1500	512	0	0.53	0	70.1	53.4	43.5
9-10 AM	672	0.0	1500	672	0	0.55	0	69.9	52.9	42.8
10-11 AM	808	0.0	1500	808	0	0.57	0	69.7	52.5	42.4
11AM-NOON	988	0.0	1500	988	0	0.59	0	69.5	51.9	41.7
NOON-1PM	1082	0.0	1500	1082	0	0.60	0	69.4	51.6	41.4
1-2 PM	1004	0.0	1500	1004	0	0.59	0	69.5	51.9	41.7
2-3 PM	1085	0.0	1500	1085	0	0.60	0	69.4	51.6	41.4
3-4 PM	1147	0.0	1500	1147	0	0.64	0	69.3	50.7	40.2
4-5 PM	1040	0.0	1500	1040	0	0.59	0	69.4	51.7	41.5
5-6 PM	1111	0.0	1500	1111	0	0.60	0	69.4	51.5	41.3
6-7 PM	942	0.0	1500	942	0	0.58	0	69.6	52.0	41.9
7-8 PM	785	0.0	1500	785	0	0.56	0	69.7	52.5	42.4
8-9 PM	628	0.0	1500	628	0	0.55	0	69.9	53.0	43.0
9-10 PM	661	0.0	1500	661	0	0.55	0	69.9	52.9	42.9
10-11 PM	788	0.0	1500	788	0	0.56	0	69.7	52.5	42.4
11PM-MID	581	0.0	1500	581	0	0.54	0	70.0	53.2	43.2

*----- SITE BREAKDOWN DELAYS -----*	
BREAKDOWN DURATION (MINS)	0
RANGE OF QUEUE DELAY - MIN (VEH-H) MAX	0.0
AV BREAKDOWNS PER DAY	0.00
AV QUEUE DELAY/DAY (VEH-H)	0.0
AV TOTAL DELAY/DAY (VEH-H)	0.0

*----- SITE ACCIDENT DELAYS -----*	
BREAKDOWN DURATION (MINS)	0
RANGE OF QUEUE DELAY - MIN (VEH-H) MAX	0
AV BREAKDOWNS PER DAY	0
AV QUEUE DELAY/DAY (VEH-H)	0
AV TOTAL DELAY/DAY (VEH-H)	0

AVERAGE ACCIDENT NUMBERS (PIA/DAY)	
MAIN ROUTE WITHOUT WORKS	0.0051
MAIN ROUTE WITH WORKS	0.0040
'DIVERSION'	0.0000

PIA: Personal Injury Accidents

ECONOMIC IMPACT ON ROAD USERS	
ROAD USER COSTS PER DAY	\$2,259
CONGESTED HOURS PER DAY*	0

\*Delays Exceeding User-Specified Maximum

**IH 794: LINCOLN AVE TO LINCOLN MEMORIAL DR (MILWAUKEE COUNTY)**  
**CONTINUOUS (24 HOUR) 2 LANE CLOSURE**  
**NO DIVERSION ROUTE (MAX QUEUE METHOD)**

**OCTOBER**

Analyzed for 2009  
 Construction Season

**GRAPHICAL REPRESENTATION OF TRAFFIC MODEL INPUT AND OUTPUT**  
**SATURDAY EASTBOUND DIRECTION**

