

IH 794: LINCOLN AVE TO LINCOLN MEMORIAL DR (MILWAUKEE COUNTY) CONTINUOUS (24 HOUR) CLOSURE NO DIVERSION ROUTE (MAX QUEUE METHOD)	OCTOBER
	Analyzed for 2009 Construction Season

SUMMARY OF TRAFFIC MODEL OUTPUT

SATURDAY WESTBOUND DIRECTION

TIME OF DAY	FLOWS AND CAPACITY IN VEH/HR						AVERAGE SPEEDS IN MPH			
	MAIN ROUTE		SITE CAPA CITY	FLOW		AV.DEL PER VEH (MINS)	AVERAGE QUEUE (VEH)	MAIN ROUTE		SITE
	DEMAND FLOW	PCT HEAVY		MAIN ROUTE	'DIVER TED'			WITHOUT WORK ZONE	WITH WORK ZONE	
MID-1 AM	250	0.0	3000	250	0	0.36	0	70.2	58.0	49.7
1-2 AM	147	0.0	3000	147	0	0.36	0	70.2	58.0	49.7
2-3 AM	121	0.0	3000	121	0	0.36	0	70.2	58.0	49.7
3-4 AM	91	0.0	3000	91	0	0.36	0	70.2	58.0	49.7
4-5 AM	105	0.0	3000	105	0	0.36	0	70.2	58.0	49.7
5-6 AM	279	0.0	3000	279	0	0.36	0	70.2	58.0	49.7
6-7 AM	503	0.0	3000	503	0	0.36	0	70.1	57.9	49.7
7-8 AM	688	0.0	3000	688	0	0.36	0	69.9	57.9	49.7
8-9 AM	892	0.0	3000	892	0	0.35	0	69.6	57.8	49.7
9-10 AM	903	0.0	3000	903	0	0.35	0	69.6	57.8	49.7
10-11 AM	1024	0.0	3000	1024	0	0.35	0	69.5	57.8	49.7
11AM-NOON	1074	0.0	3000	1074	0	0.35	0	69.4	57.8	49.7
NOON-1PM	1088	0.0	3000	1088	0	0.35	0	69.4	57.8	49.7
1-2 PM	1090	0.0	3000	1090	0	0.35	0	69.4	57.7	49.7
2-3 PM	1004	0.0	3000	1004	0	0.35	0	69.5	57.8	49.7
3-4 PM	994	0.0	3000	994	0	0.35	0	69.5	57.8	49.7
4-5 PM	953	0.0	3000	953	0	0.35	0	69.6	57.8	49.7
5-6 PM	943	0.0	3000	943	0	0.35	0	69.6	57.8	49.7
6-7 PM	908	0.0	3000	908	0	0.35	0	69.6	57.8	49.7
7-8 PM	789	0.0	3000	789	0	0.35	0	69.7	57.9	49.7
8-9 PM	591	0.0	3000	591	0	0.36	0	70.0	57.9	49.7
9-10 PM	588	0.0	3000	588	0	0.36	0	70.0	57.9	49.7
10-11 PM	542	0.0	3000	542	0	0.36	0	70.0	57.9	49.7
11PM-MID	376	0.0	3000	376	0	0.36	0	70.2	58.0	49.7

----- SITE BREAKDOWN DELAYS -----	
BREAKDOWN DURATION (MINS)	0
RANGE OF QUEUE DELAY - MIN (VEH-H) MAX	0.0
AV BREAKDOWNS PER DAY	0.00
AV QUEUE DELAY/DAY (VEH-H)	0.0
AV TOTAL DELAY/DAY (VEH-H)	0.0

----- SITE ACCIDENT DELAYS -----	
BREAKDOWN DURATION (MINS)	0
RANGE OF QUEUE DELAY - MIN (VEH-H) MAX	0
AV BREAKDOWNS PER DAY	0
AV QUEUE DELAY/DAY (VEH-H)	0
AV TOTAL DELAY/DAY (VEH-H)	0

AVERAGE ACCIDENT NUMBERS (PIA/DAY)	
MAIN ROUTE WITHOUT WORKS	0.0051
MAIN ROUTE WITH WORKS	0.0040
'DIVERSION'	0.0000
PIA: Personal Injury Accidents	
IMPACTS ON ROAD USERS	
ROAD USER COSTS PER DAY	\$1,358
CONGESTED HOURS PER DAY*	0

*Delays Exceeding User-Specified Maximum

IH 794: LINCOLN AVE TO LINCOLN MEMORIAL DR (MILWAUKEE COUNTY)
CONTINUOUS (24 HOUR) CLOSURE
NO DIVERSION ROUTE (MAX QUEUE METHOD)

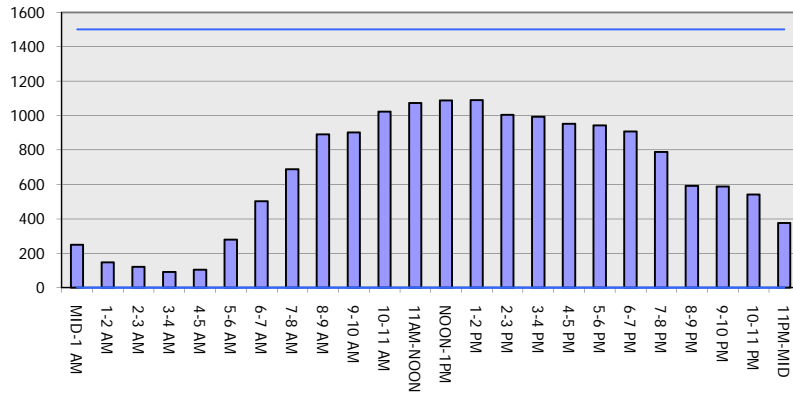
OCTOBER

Analyzed for 2009
 Construction Season

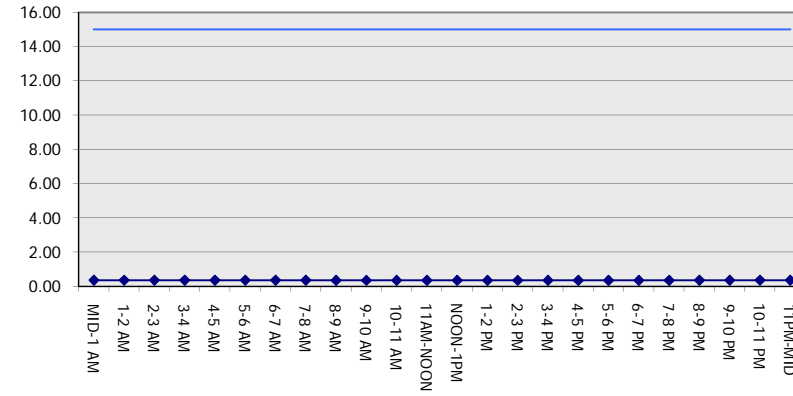
GRAPHICAL REPRESENTATION OF TRAFFIC MODEL INPUT AND OUTPUT

SATURDAY WESTBOUND DIRECTION

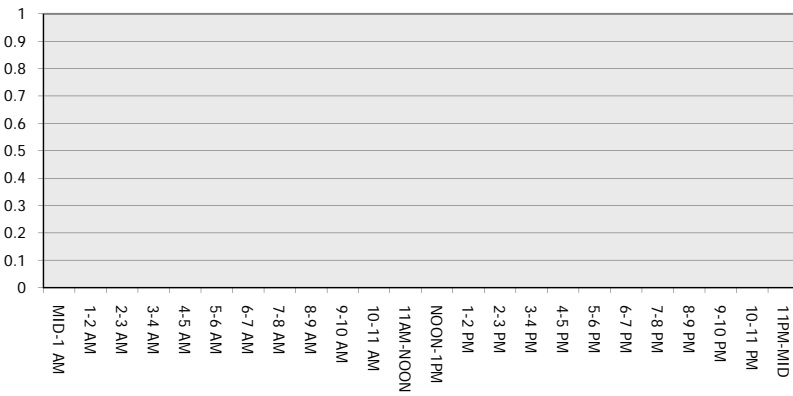
Main Route - Traffic Demand (Vehicles Per Hour)



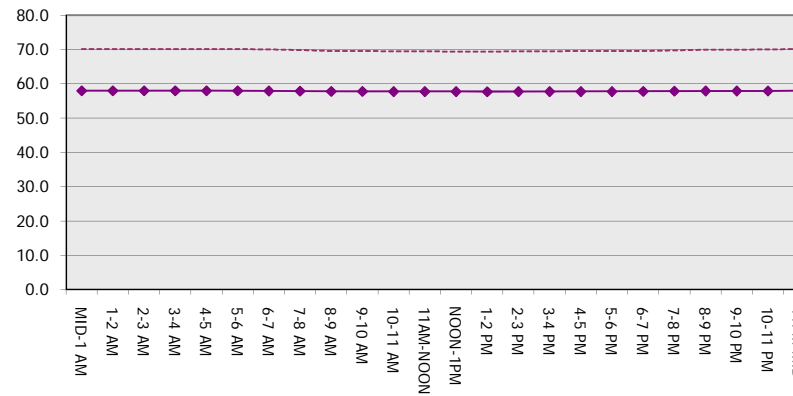
Main Route Average Delay Per Vehicle (Minutes)



Main Route - Average Queue Length (Vehicles)



Main Route - Average Speed (MPH)



IH 794: LINCOLN AVE TO LINCOLN MEMORIAL DR (MILWAUKEE COUNTY) CONTINUOUS (24 HOUR) CLOSURE NO DIVERSION ROUTE (MAX QUEUE METHOD)	OCTOBER
	Analyzed for 2009 Construction Season

SUMMARY OF TRAFFIC MODEL OUTPUT

SATURDAY EASTBOUND DIRECTION

TIME OF DAY	FLOWS AND CAPACITY IN VEH/HR							AVERAGE SPEEDS IN MPH		
	MAIN ROUTE		SITE CAPA CITY	FLOW		AV.DEL PER VEH (MINS)	AVERAGE QUEUE (VEH)	MAIN ROUTE		SITE
	DEMAND FLOW	PCT HEAVY		MAIN ROUTE	'DIVER TED'			WITHOUT WORK ZONE	WITH WORK ZONE	
MID-1 AM	429	0.0	3000	429	0	0.36	0	70.2	58.0	49.7
1-2 AM	251	0.0	3000	251	0	0.36	0	70.2	58.0	49.7
2-3 AM	269	0.0	3000	269	0	0.36	0	70.2	58.0	49.7
3-4 AM	150	0.0	3000	150	0	0.36	0	70.2	58.0	49.7
4-5 AM	132	0.0	3000	132	0	0.36	0	70.2	58.0	49.7
5-6 AM	180	0.0	3000	180	0	0.36	0	70.2	58.0	49.7
6-7 AM	277	0.0	3000	277	0	0.36	0	70.2	58.0	49.7
7-8 AM	347	0.0	3000	347	0	0.36	0	70.2	58.0	49.7
8-9 AM	512	0.0	3000	512	0	0.36	0	70.1	57.9	49.7
9-10 AM	672	0.0	3000	672	0	0.36	0	69.9	57.9	49.7
10-11 AM	808	0.0	3000	808	0	0.35	0	69.7	57.8	49.7
11AM-NOON	988	0.0	3000	988	0	0.35	0	69.5	57.8	49.7
NOON-1PM	1082	0.0	3000	1082	0	0.35	0	69.4	57.8	49.7
1-2 PM	1004	0.0	3000	1004	0	0.35	0	69.5	57.8	49.7
2-3 PM	1085	0.0	3000	1085	0	0.35	0	69.4	57.8	49.7
3-4 PM	1147	0.0	3000	1147	0	0.35	0	69.3	57.7	49.7
4-5 PM	1040	0.0	3000	1040	0	0.35	0	69.4	57.8	49.7
5-6 PM	1111	0.0	3000	1111	0	0.35	0	69.4	57.7	49.7
6-7 PM	942	0.0	3000	942	0	0.35	0	69.6	57.8	49.7
7-8 PM	785	0.0	3000	785	0	0.35	0	69.7	57.9	49.7
8-9 PM	628	0.0	3000	628	0	0.36	0	69.9	57.9	49.7
9-10 PM	661	0.0	3000	661	0	0.36	0	69.9	57.9	49.7
10-11 PM	788	0.0	3000	788	0	0.35	0	69.7	57.9	49.7
11PM-MID	581	0.0	3000	581	0	0.36	0	70.0	57.9	49.7

----- SITE BREAKDOWN DELAYS -----	
BREAKDOWN DURATION (MINS)	0
RANGE OF QUEUE DELAY - MIN (VEH-H) MAX	0.0
AV BREAKDOWNS PER DAY	0.00
AV QUEUE DELAY/DAY (VEH-H)	0.0
AV TOTAL DELAY/DAY (VEH-H)	0.0

----- SITE ACCIDENT DELAYS -----	
BREAKDOWN DURATION (MINS)	0
RANGE OF QUEUE DELAY - MIN (VEH-H) MAX	0
AV BREAKDOWNS PER DAY	0
AV QUEUE DELAY/DAY (VEH-H)	0
AV TOTAL DELAY/DAY (VEH-H)	0

AVERAGE ACCIDENT NUMBERS (PIA/DAY)	
MAIN ROUTE WITHOUT WORKS	0.0051
MAIN ROUTE WITH WORKS	0.0040
'DIVERSION'	0.0000

PIA: Personal Injury Accidents

ECONOMIC IMPACT ON ROAD USERS	
ROAD USER COSTS PER DAY	\$1,353
CONGESTED HOURS PER DAY*	0

*Delays Exceeding User-Specified Maximum

IH 794: LINCOLN AVE TO LINCOLN MEMORIAL DR (MILWAUKEE COUNTY)
CONTINUOUS (24 HOUR) CLOSURE
NO DIVERSION ROUTE (MAX QUEUE METHOD)

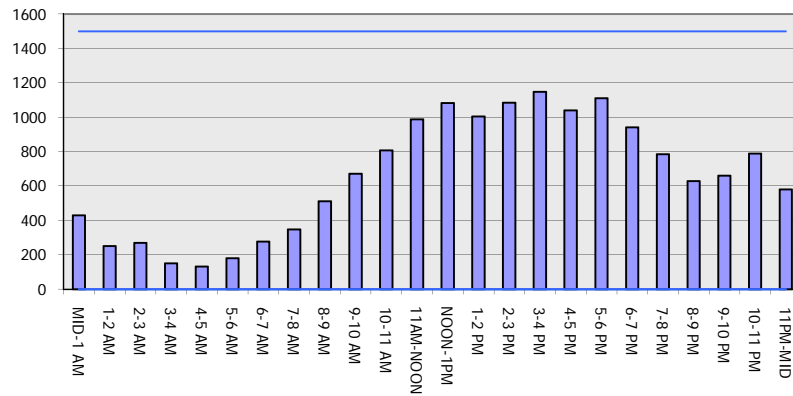
OCTOBER

Analyzed for 2009
 Construction Season

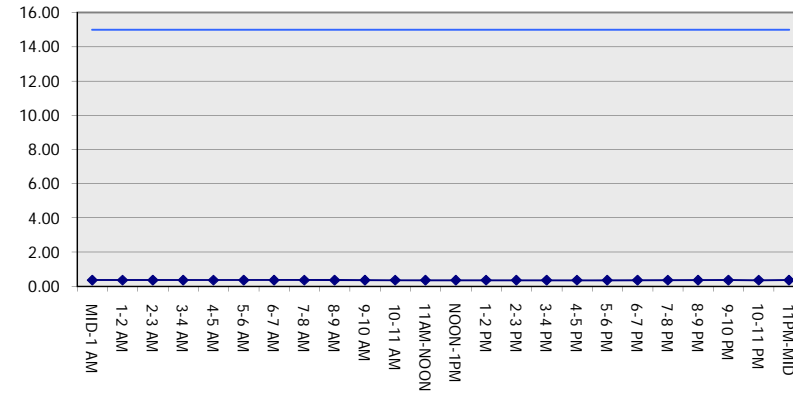
GRAPHICAL REPRESENTATION OF TRAFFIC MODEL INPUT AND OUTPUT

SATURDAY EASTBOUND DIRECTION

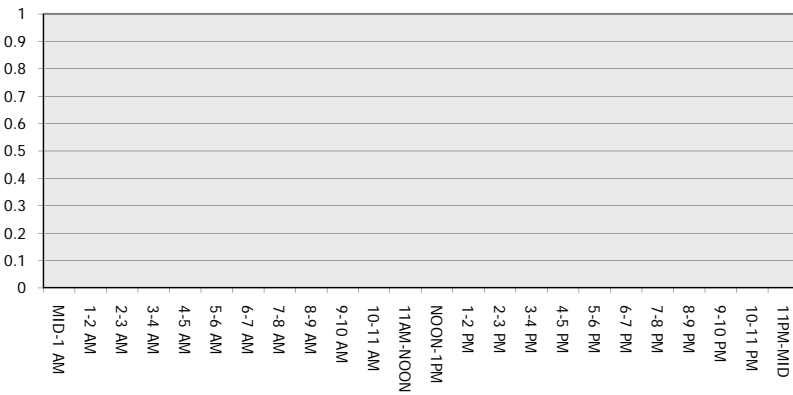
Main Route - Traffic Demand (Vehicles Per Hour)



Main Route Average Delay Per Vehicle (Minutes)



Main Route - Average Queue Length (Vehicles)



Main Route - Average Speed (MPH)

