

<b>IH 794: LINCOLN AVE TO LINCOLN MEMORIAL DR (MILWAUKEE COUNTY)</b> <b>CONTINUOUS (24 HOUR) 2 LANE CLOSURE</b> <b>NO DIVERSION ROUTE (MAX QUEUE METHOD)</b>	<b>OCTOBER</b>
	Analyzed for 2009 Construction Season

**SUMMARY OF TRAFFIC MODEL OUTPUT**

MON-THUR                  WESTBOUND DIRECTION

TIME OF DAY	FLOWS AND CAPACITY IN VEH/HR						AVERAGE SPEEDS IN MPH			
	MAIN ROUTE		SITE CAPA CITY	FLOW		AV.DEL PER VEH (MINS)	AVERAGE QUEUE (VEH)	MAIN ROUTE		SITE
	DEMAND FLOW	PCT HEAVY		MAIN ROUTE	'DIVER TED'			WITHOUT WORK ZONE	WITH WORK ZONE	
MID-1 AM	132	0.0	1500	132	0	0.49	0	70.2	54.6	45.0
1-2 AM	68	0.0	1500	68	0	0.48	0	70.2	54.8	45.2
2-3 AM	68	0.0	1500	68	0	0.48	0	70.2	54.8	45.2
3-4 AM	77	0.0	1500	77	0	0.48	0	70.2	54.8	45.2
4-5 AM	175	0.0	1500	175	0	0.49	0	70.2	54.5	44.8
5-6 AM	857	0.0	1500	857	0	0.57	0	69.7	52.3	42.2
6-7 AM	2286	0.0	1499	1974	312	7.96+	237	67.9	13.0	30.8
7-8 AM	3992	0.0	1500	1500	2492	16.99+	420	63.6	7.5	30.8
8-9 AM	3013	0.0	1499	1480	1532	16.99+	417	67.0	7.5	30.8
9-10 AM	1324	0.0	1499	1217	106	13.55+	338	69.1	8.6	31.9
10-11 AM	1007	0.0	1500	1007	0	1.24	33	69.5	40.5	40.6
11AM-NOON	930	0.0	1500	930	0	0.58	0	69.6	52.1	41.9
NOON-1PM	987	0.0	1500	987	0	0.59	0	69.5	51.9	41.7
1-2 PM	1028	0.0	1500	1028	0	0.59	0	69.4	51.8	41.6
2-3 PM	1138	0.0	1500	1138	0	0.63	0	69.3	50.9	40.6
3-4 PM	1284	0.0	1500	1284	0	0.82	0	69.1	47.0	36.0
4-5 PM	1307	0.0	1500	1307	0	0.85	0	69.1	46.5	35.3
5-6 PM	1236	0.0	1500	1236	0	0.75	0	69.2	48.3	37.3
6-7 PM	1001	0.0	1500	1001	0	0.59	0	69.5	51.9	41.7
7-8 PM	686	0.0	1500	686	0	0.55	0	69.9	52.8	42.8
8-9 PM	540	0.0	1500	540	0	0.54	0	70.0	53.3	43.3
9-10 PM	500	0.0	1500	500	0	0.53	0	70.1	53.5	43.5
10-11 PM	386	0.0	1500	386	0	0.52	0	70.2	53.8	44.0
11PM-MID	252	0.0	1500	252	0	0.50	0	70.2	54.2	44.5

+ INDICATES QUEUEING EXCEEDS USER-SPECIFIED MAXIMUM LIMIT

*----- SITE BREAKDOWN DELAYS -----*	
BREAKDOWN DURATION (MINS)	0
RANGE OF QUEUE DELAY - MIN	0.0
(VEH-H) MAX	0.0
AV BREAKDOWNS PER DAY	0.00
AV QUEUE DELAY/DAY (VEH-H)	0.0
AV TOTAL DELAY/DAY (VEH-H)	0.0

*----- SITE ACCIDENT DELAYS -----*	
BREAKDOWN DURATION (MINS)	0
RANGE OF QUEUE DELAY - MIN	0
(VEH-H) MAX	0
AV BREAKDOWNS PER DAY	0
AV QUEUE DELAY/DAY (VEH-H)	0
AV TOTAL DELAY/DAY (VEH-H)	0

AVERAGE ACCIDENT NUMBERS (PIA/DAY)	
MAIN ROUTE WITHOUT WORKS	0.0077
MAIN ROUTE WITH WORKS	0.0050
'DIVERSION'	0.0033
<small>PIA: Personal Injury Accidents</small>	
IMPACTS ON ROAD USERS	
ROAD USER COSTS PER DAY	\$35,103
CONGESTED HOURS PER DAY*	4

\*Delays Exceeding User-Specified Maximum

**IH 794: LINCOLN AVE TO LINCOLN MEMORIAL DR (MILWAUKEE COUNTY)**  
**CONTINUOUS (24 HOUR) 2 LANE CLOSURE**  
**NO DIVERSION ROUTE (MAX QUEUE METHOD)**

**OCTOBER**

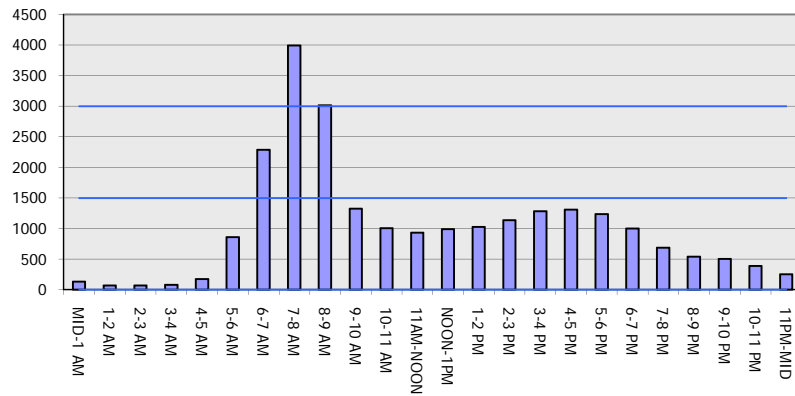
Analyzed for 2009  
 Construction Season

**GRAPHICAL REPRESENTATION OF TRAFFIC MODEL INPUT AND OUTPUT**

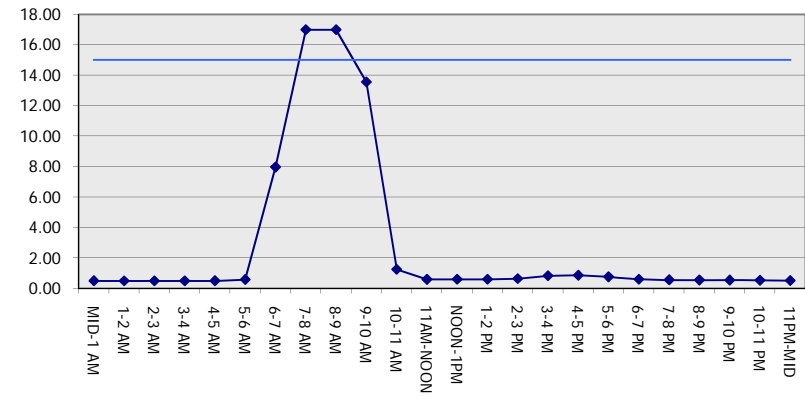
**MON-THUR**

**WESTBOUND DIRECTION**

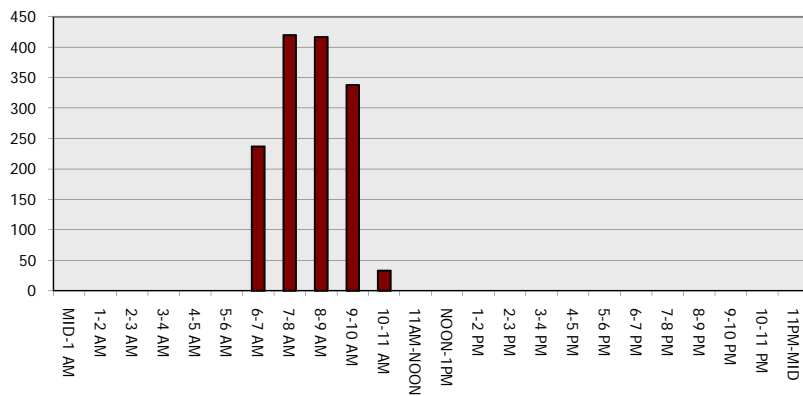
**Main Route - Traffic Demand (Vehicles Per Hour)**



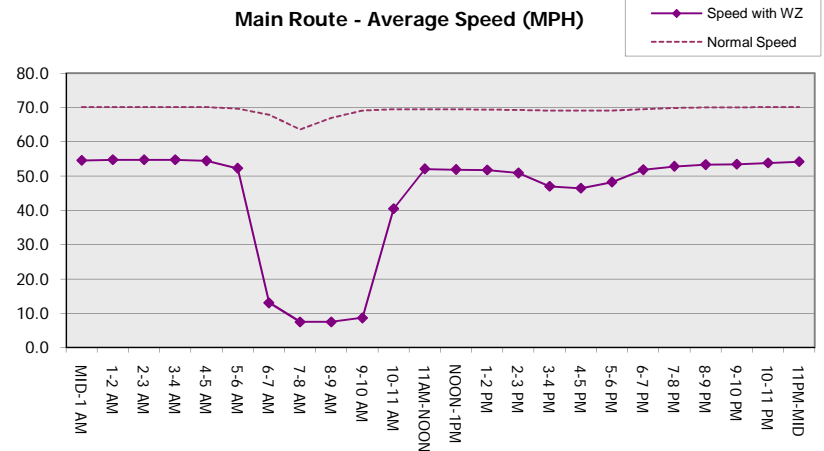
**Main Route Average Delay Per Vehicle (Minutes)**



**Main Route - Average Queue Length (Vehicles)**



**Main Route - Average Speed (MPH)**



<b>IH 794: LINCOLN AVE TO LINCOLN MEMORIAL DR (MILWAUKEE COUNTY)</b> <b>CONTINUOUS (24 HOUR) 2 LANE CLOSURE</b> <b>NO DIVERSION ROUTE (MAX QUEUE METHOD)</b>	<b>OCTOBER</b>
	Analyzed for 2009 Construction Season

**SUMMARY OF TRAFFIC MODEL OUTPUT**

MON-THUR                      EASTBOUND DIRECTION

TIME OF DAY	FLOWS AND CAPACITY IN VEH/HR							AVERAGE SPEEDS IN MPH		
	MAIN ROUTE		SITE CAPA CITY	FLOW		AV.DEL PER VEH (MINS)	AVERAGE QUEUE (VEH)	MAIN ROUTE		SITE
	DEMAND FLOW	PCT HEAVY		MAIN ROUTE	'DIVER TED'			WITHOUT WORK ZONE	WITH WORK ZONE	
MID-1 AM	206	0.0	1500	206	0	0.50	0	70.2	54.3	44.6
1-2 AM	133	0.0	1500	133	0	0.49	0	70.2	54.6	45.0
2-3 AM	107	0.0	1500	107	0	0.49	0	70.2	54.6	45.1
3-4 AM	84	0.0	1500	84	0	0.48	0	70.2	54.7	45.1
4-5 AM	120	0.0	1500	120	0	0.49	0	70.2	54.6	45.0
5-6 AM	306	0.0	1500	306	0	0.51	0	70.2	54.0	44.3
6-7 AM	695	0.0	1500	695	0	0.55	0	69.9	52.8	42.8
7-8 AM	1043	0.0	1500	1043	0	0.59	0	69.4	51.7	41.5
8-9 AM	819	0.0	1500	819	0	0.57	0	69.7	52.4	42.3
9-10 AM	689	0.0	1500	689	0	0.55	0	69.9	52.8	42.8
10-11 AM	745	0.0	1500	745	0	0.56	0	69.8	52.7	42.6
11AM-NOON	948	0.0	1500	948	0	0.58	0	69.6	52.0	41.9
NOON-1PM	1102	0.0	1500	1102	0	0.60	0	69.4	51.5	41.3
1-2 PM	1111	0.0	1499	1111	0	0.64	0	69.4	50.7	40.3
2-3 PM	1670	0.0	1499	1670	0	2.24	45	68.7	30.1	30.8
3-4 PM	2377	0.0	1500	1819	558	15.20+	379	67.8	8.0	31.1
4-5 PM	3129	0.0	1499	1474	1655	17.01+	418	66.8	7.5	30.8
5-6 PM	3444	0.0	1499	1492	1952	17.06+	419	66.4	7.5	30.8
6-7 PM	1737	0.0	1500	1408	330	16.48+	403	68.6	7.6	30.8
7-8 PM	1167	0.0	1499	1167	0	8.06	220	69.3	12.6	33.6
8-9 PM	956	0.0	1500	956	0	0.61	0	69.6	51.4	41.9
9-10 PM	792	0.0	1500	792	0	0.56	0	69.7	52.5	42.4
10-11 PM	665	0.0	1500	665	0	0.55	0	69.9	52.9	42.9
11PM-MID	501	0.0	1500	501	0	0.53	0	70.1	53.5	43.5

+ INDICATES QUEUEING EXCEEDS USER-SPECIFIED MAXIMUM LIMIT

*----- SITE BREAKDOWN DELAYS -----*	
BREAKDOWN DURATION (MINS)	0
RANGE OF QUEUE DELAY - MIN (VEH-H) MAX	0.0
AV BREAKDOWNS PER DAY	0.00
AV QUEUE DELAY/DAY (VEH-H)	0.0
AV TOTAL DELAY/DAY (VEH-H)	0.0

*----- SITE ACCIDENT DELAYS -----*	
BREAKDOWN DURATION (MINS)	0
RANGE OF QUEUE DELAY - MIN (VEH-H) MAX	0
AV BREAKDOWNS PER DAY	0
AV QUEUE DELAY/DAY (VEH-H)	0
AV TOTAL DELAY/DAY (VEH-H)	0

AVERAGE ACCIDENT NUMBERS (PIA/DAY)	
MAIN ROUTE WITHOUT WORKS	0.0078
MAIN ROUTE WITH WORKS	0.0051
'DIVERSION'	0.0033

PIA: Personal Injury Accidents

ECONOMIC IMPACT ON ROAD USERS	
ROAD USER COSTS PER DAY	\$41,859
CONGESTED HOURS PER DAY*	4

\*Delays Exceeding User-Specified Maximum

**IH 794: LINCOLN AVE TO LINCOLN MEMORIAL DR (MILWAUKEE COUNTY)**  
**CONTINUOUS (24 HOUR) 2 LANE CLOSURE**  
**NO DIVERSION ROUTE (MAX QUEUE METHOD)**

**OCTOBER**

Analyzed for 2009  
 Construction Season

**GRAPHICAL REPRESENTATION OF TRAFFIC MODEL INPUT AND OUTPUT**

**MON-THUR EASTBOUND DIRECTION**

