

IH 794: LINCOLN AVE TO LINCOLN MEMORIAL DR (MILWAUKEE COUNTY) CONTINUOUS (24 HOUR) CLOSURE NO DIVERSION ROUTE (MAX QUEUE METHOD)	OCTOBER
	Analyzed for 2009 Construction Season

SUMMARY OF TRAFFIC MODEL OUTPUT

FRIDAY WESTBOUND DIRECTION

TIME OF DAY	FLOWS AND CAPACITY IN VEH/HR						AVERAGE SPEEDS IN MPH			
	MAIN ROUTE		SITE CAPA CITY	FLOW		AV.DEL PER VEH (MINS)	AVERAGE QUEUE (VEH)	MAIN ROUTE		SITE
	DEMAND FLOW	PCT HEAVY		MAIN ROUTE	'DIVER TED'			WITHOUT WORK ZONE	WITH WORK ZONE	
MID-1 AM	178	0.0	3000	178	0	0.36	0	70.2	58.0	49.7
1-2 AM	108	0.0	3000	108	0	0.36	0	70.2	58.0	49.7
2-3 AM	90	0.0	3000	90	0	0.36	0	70.2	58.0	49.7
3-4 AM	81	0.0	3000	81	0	0.36	0	70.2	58.0	49.7
4-5 AM	175	0.0	3000	175	0	0.36	0	70.2	58.0	49.7
5-6 AM	827	0.0	3000	827	0	0.35	0	69.7	57.8	49.7
6-7 AM	2315	0.0	2999	2315	0	0.42	0	67.9	54.8	46.3
7-8 AM	3759	0.0	2999	3759	0	6.29	366	65.2	16.6	37.3
8-9 AM	2726	0.0	2999	2726	0	13.28+	695	67.3	11.1	37.3
9-10 AM	1386	0.0	3000	1386	0	0.94	83	69.0	45.2	49.7
10-11 AM	1091	0.0	3000	1091	0	0.35	0	69.4	57.7	49.7
11AM-NOON	1074	0.0	3000	1074	0	0.35	0	69.4	57.8	49.7
NOON-1PM	1118	0.0	3000	1118	0	0.35	0	69.4	57.7	49.7
1-2 PM	1169	0.0	3000	1169	0	0.35	0	69.3	57.7	49.7
2-3 PM	1237	0.0	3000	1237	0	0.35	0	69.2	57.6	49.7
3-4 PM	1332	0.0	3000	1332	0	0.35	0	69.1	57.6	49.7
4-5 PM	1412	0.0	3000	1412	0	0.34	0	69.0	57.6	49.7
5-6 PM	1364	0.0	3000	1364	0	0.34	0	69.1	57.6	49.7
6-7 PM	1152	0.0	3000	1152	0	0.35	0	69.3	57.7	49.7
7-8 PM	859	0.0	3000	859	0	0.35	0	69.7	57.8	49.7
8-9 PM	624	0.0	3000	624	0	0.36	0	70.0	57.9	49.7
9-10 PM	606	0.0	3000	606	0	0.36	0	70.0	57.9	49.7
10-11 PM	583	0.0	3000	583	0	0.36	0	70.0	57.9	49.7
11PM-MID	378	0.0	3000	378	0	0.36	0	70.2	58.0	49.7

+ INDICATES QUEUEING EXCEEDS USER-SPECIFIED MAXIMUM LIMIT

----- SITE BREAKDOWN DELAYS -----	
BREAKDOWN DURATION (MINS)	0
RANGE OF QUEUE DELAY - MIN (VEH-H) MAX	0.0
AV BREAKDOWNS PER DAY	0.00
AV QUEUE DELAY/DAY (VEH-H)	0.0
AV TOTAL DELAY/DAY (VEH-H)	0.0

----- SITE ACCIDENT DELAYS -----	
BREAKDOWN DURATION (MINS)	0
RANGE OF QUEUE DELAY - MIN (VEH-H) MAX	0
AV BREAKDOWNS PER DAY	0
AV QUEUE DELAY/DAY (VEH-H)	0
AV TOTAL DELAY/DAY (VEH-H)	0

AVERAGE ACCIDENT NUMBERS (PIA/DAY)	
MAIN ROUTE WITHOUT WORKS	0.0082
MAIN ROUTE WITH WORKS	0.0065
'DIVERSION'	0.0000
PIA: Personal Injury Accidents	
IMPACTS ON ROAD USERS	
ROAD USER COSTS PER DAY	\$14,641
CONGESTED HOURS PER DAY*	1

*Delays Exceeding User-Specified Maximum

IH 794: LINCOLN AVE TO LINCOLN MEMORIAL DR (MILWAUKEE COUNTY)
CONTINUOUS (24 HOUR) CLOSURE
NO DIVERSION ROUTE (MAX QUEUE METHOD)

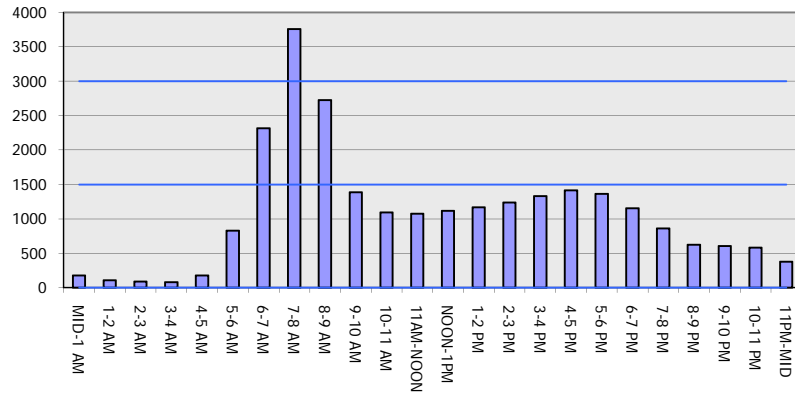
OCTOBER

Analyzed for 2009
 Construction Season

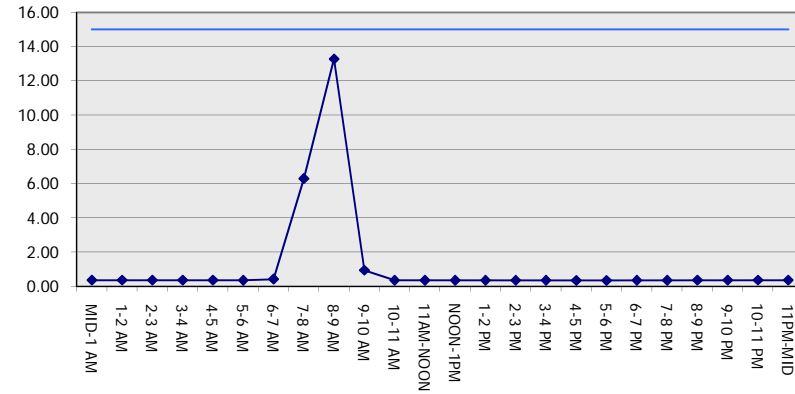
GRAPHICAL REPRESENTATION OF TRAFFIC MODEL INPUT AND OUTPUT

FRIDAY WESTBOUND DIRECTION

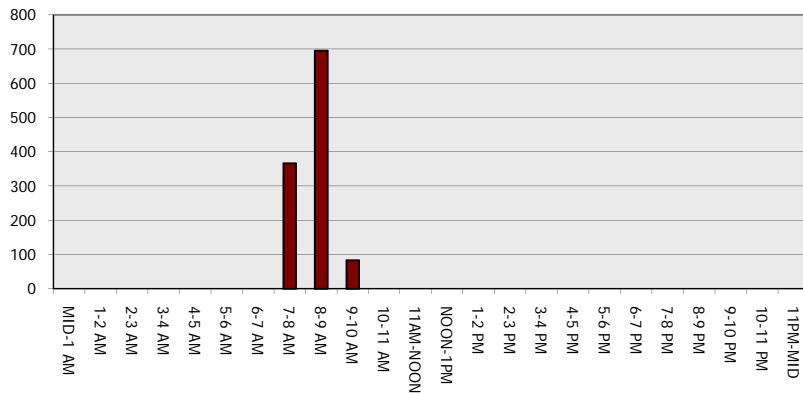
Main Route - Traffic Demand (Vehicles Per Hour)



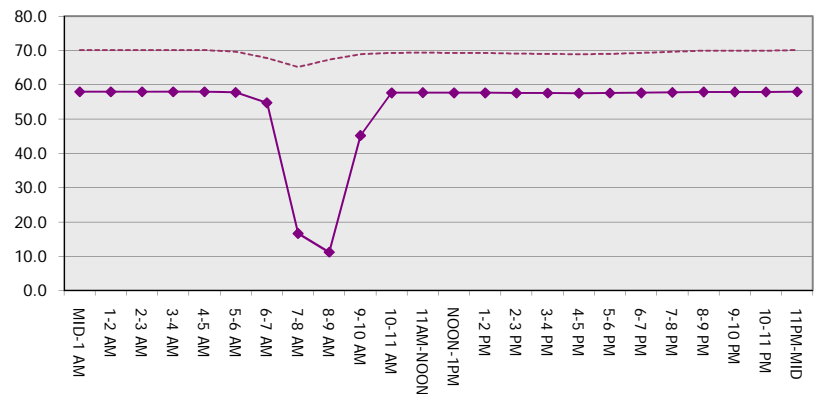
Main Route Average Delay Per Vehicle (Minutes)



Main Route - Average Queue Length (Vehicles)



Main Route - Average Speed (MPH)



IH 794: LINCOLN AVE TO LINCOLN MEMORIAL DR (MILWAUKEE COUNTY) CONTINUOUS (24 HOUR) CLOSURE NO DIVERSION ROUTE (MAX QUEUE METHOD)	OCTOBER
	Analyzed for 2009 Construction Season

SUMMARY OF TRAFFIC MODEL OUTPUT

FRIDAY EASTBOUND DIRECTION

TIME OF DAY	FLOWS AND CAPACITY IN VEH/HR							AVERAGE SPEEDS IN MPH		
	MAIN ROUTE		SITE CAPA CITY	FLOW		AV.DEL PER VEH (MINS)	AVERAGE QUEUE (VEH)	MAIN ROUTE		SITE
	DEMAND FLOW	PCT HEAVY		MAIN ROUTE	'DIVER TED'			WITHOUT WORK ZONE	WITH WORK ZONE	
MID-1 AM	341	0.0	3000	341	0	0.36	0	70.2	58.0	49.7
1-2 AM	224	0.0	3000	224	0	0.36	0	70.2	58.0	49.7
2-3 AM	183	0.0	3000	183	0	0.36	0	70.2	58.0	49.7
3-4 AM	122	0.0	3000	122	0	0.36	0	70.2	58.0	49.7
4-5 AM	181	0.0	3000	181	0	0.36	0	70.2	58.0	49.7
5-6 AM	331	0.0	3000	331	0	0.36	0	70.2	58.0	49.7
6-7 AM	742	0.0	3000	742	0	0.35	0	69.8	57.9	49.7
7-8 AM	997	0.0	3000	997	0	0.35	0	69.5	57.8	49.7
8-9 AM	825	0.0	3000	825	0	0.35	0	69.7	57.8	49.7
9-10 AM	725	0.0	3000	725	0	0.35	0	69.9	57.9	49.7
10-11 AM	876	0.0	3000	876	0	0.35	0	69.6	57.8	49.7
11AM-NOON	1038	0.0	3000	1038	0	0.35	0	69.4	57.8	49.7
NOON-1PM	1279	0.0	3000	1279	0	0.35	0	69.1	57.6	49.7
1-2 PM	1291	0.0	3000	1291	0	0.35	0	69.1	57.6	49.7
2-3 PM	1794	0.0	3000	1794	0	0.34	0	68.5	57.4	49.7
3-4 PM	2477	0.0	2999	2477	0	0.41	0	67.6	54.9	46.6
4-5 PM	3185	0.0	2999	3185	0	1.87	73	66.8	32.7	37.3
5-6 PM	3081	0.0	3000	3081	0	5.74	278	66.9	16.5	37.3
6-7 PM	1488	0.0	3000	1488	0	0.59	28	68.9	51.4	49.7
7-8 PM	997	0.0	3000	997	0	0.35	0	69.5	57.8	49.7
8-9 PM	779	0.0	3000	779	0	0.35	0	69.7	57.9	49.7
9-10 PM	811	0.0	3000	811	0	0.35	0	69.7	57.8	49.7
10-11 PM	794	0.0	3000	794	0	0.35	0	69.7	57.9	49.7
11PM-MID	633	0.0	3000	633	0	0.36	0	69.9	57.9	49.7

----- SITE BREAKDOWN DELAYS -----	
BREAKDOWN DURATION (MINS)	0
RANGE OF QUEUE DELAY - MIN (VEH-H) MAX	0.0
AV BREAKDOWNS PER DAY	0.00
AV QUEUE DELAY/DAY (VEH-H)	0.0
AV TOTAL DELAY/DAY (VEH-H)	0.0

----- SITE ACCIDENT DELAYS -----	
BREAKDOWN DURATION (MINS)	0
RANGE OF QUEUE DELAY - MIN (VEH-H) MAX	0
AV BREAKDOWNS PER DAY	0
AV QUEUE DELAY/DAY (VEH-H)	0
AV TOTAL DELAY/DAY (VEH-H)	0

AVERAGE ACCIDENT NUMBERS (PIA/DAY)	
MAIN ROUTE WITHOUT WORKS	0.0080
MAIN ROUTE WITH WORKS	0.0064
'DIVERSION'	0.0000

PIA: Personal Injury Accidents

ECONOMIC IMPACT ON ROAD USERS	
ROAD USER COSTS PER DAY	\$6,672
CONGESTED HOURS PER DAY*	0

*Delays Exceeding User-Specified Maximum

**IH 794: LINCOLN AVE TO LINCOLN MEMORIAL DR (MILWAUKEE COUNTY)
 CONTINUOUS (24 HOUR) CLOSURE
 NO DIVERSION ROUTE (MAX QUEUE METHOD)**

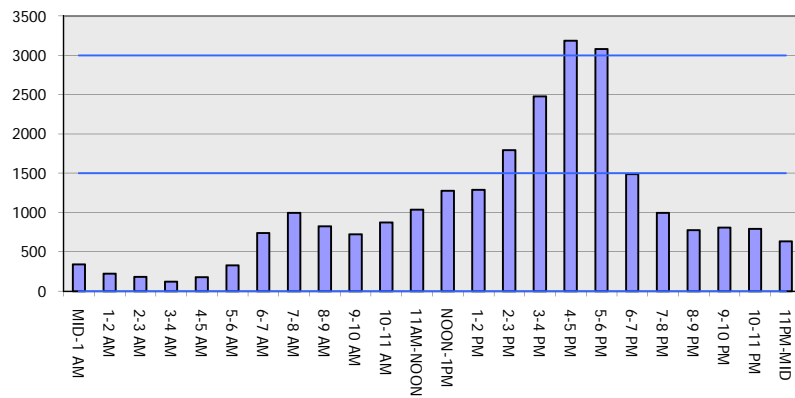
OCTOBER

Analyzed for 2009
 Construction Season

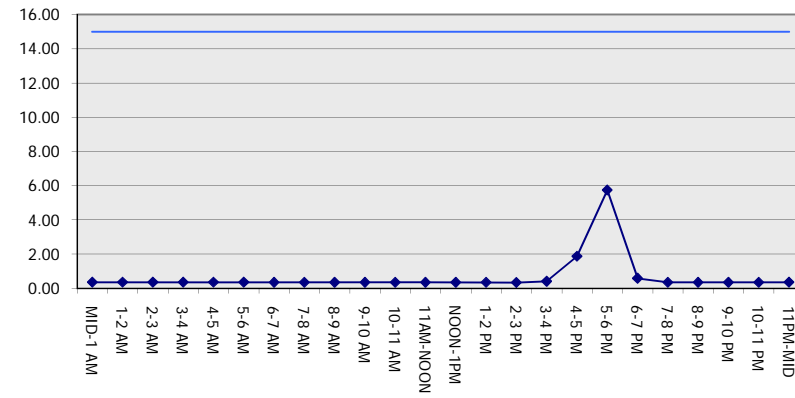
GRAPHICAL REPRESENTATION OF TRAFFIC MODEL INPUT AND OUTPUT

FRIDAY EASTBOUND DIRECTION

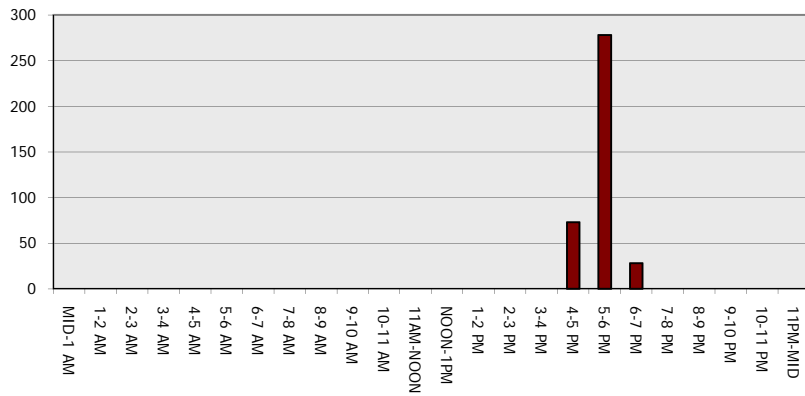
Main Route - Traffic Demand (Vehicles Per Hour)



Main Route Average Delay Per Vehicle (Minutes)



Main Route - Average Queue Length (Vehicles)



Main Route - Average Speed (MPH)

