

<b>IH 794: LINCOLN AVE TO LINCOLN MEMORIAL DR (MILWAUKEE COUNTY)</b> <b>CONTINUOUS (24 HOUR) 2 LANE CLOSURE</b> <b>NO DIVERSION ROUTE (MAX QUEUE METHOD)</b>	<b>AUGUST</b>
	Analyzed for 2009 Construction Season

**SUMMARY OF TRAFFIC MODEL OUTPUT**

SUNDAY WESTBOUND DIRECTION

TIME OF DAY	FLOWS AND CAPACITY IN VEH/HR						AVERAGE SPEEDS IN MPH			
	MAIN ROUTE		SITE CAPA CITY	FLOW		AV.DEL PER VEH (MINS)	AVERAGE QUEUE (VEH)	MAIN ROUTE		SITE
	DEMAND FLOW	PCT HEAVY		MAIN ROUTE	'DIVER TED'			WITHOUT WORK ZONE	WITH WORK ZONE	
MID-1 AM	247	0.0	1500	247	0	0.50	0	70.2	54.2	44.5
1-2 AM	146	0.0	1500	146	0	0.49	0	70.2	54.5	44.9
2-3 AM	121	0.0	1500	121	0	0.49	0	70.2	54.6	45.0
3-4 AM	69	0.0	1500	69	0	0.48	0	70.2	54.8	45.2
4-5 AM	68	0.0	1500	68	0	0.48	0	70.2	54.8	45.2
5-6 AM	154	0.0	1500	154	0	0.49	0	70.2	54.5	44.8
6-7 AM	258	0.0	1500	258	0	0.50	0	70.2	54.2	44.5
7-8 AM	331	0.0	1500	331	0	0.51	0	70.2	54.0	44.2
8-9 AM	482	0.0	1500	482	0	0.53	0	70.1	53.5	43.6
9-10 AM	710	0.0	1500	710	0	0.56	0	69.9	52.8	42.7
10-11 AM	894	0.0	1500	894	0	0.58	0	69.6	52.2	42.0
11AM-NOON	1012	0.0	1500	1012	0	0.59	0	69.5	51.9	41.6
NOON-1PM	1166	0.0	1500	1166	0	0.66	0	69.3	50.1	39.6
1-2 PM	985	0.0	1500	985	0	0.59	0	69.5	51.9	41.7
2-3 PM	987	0.0	1500	987	0	0.59	0	69.5	51.9	41.7
3-4 PM	881	0.0	1500	881	0	0.57	0	69.6	52.2	42.1
4-5 PM	823	0.0	1500	823	0	0.57	0	69.7	52.4	42.3
5-6 PM	768	0.0	1500	768	0	0.56	0	69.8	52.6	42.5
6-7 PM	817	0.0	1500	817	0	0.57	0	69.7	52.4	42.4
7-8 PM	603	0.0	1500	603	0	0.54	0	70.0	53.1	43.1
8-9 PM	508	0.0	1500	508	0	0.53	0	70.1	53.4	43.5
9-10 PM	455	0.0	1500	455	0	0.53	0	70.2	53.6	43.7
10-11 PM	365	0.0	1500	365	0	0.52	0	70.2	53.9	44.0
11PM-MID	200	0.0	1500	200	0	0.50	0	70.2	54.4	44.7

**\*----- SITE BREAKDOWN DELAYS -----\***

BREAKDOWN DURATION (MINS)	0
RANGE OF QUEUE DELAY - MIN (VEH-H) MAX	0.0
AV BREAKDOWNS PER DAY	0.00
AV QUEUE DELAY/DAY (VEH-H)	0.0
AV TOTAL DELAY/DAY (VEH-H)	0.0

**\*----- SITE ACCIDENT DELAYS -----\***

BREAKDOWN DURATION (MINS)	0
RANGE OF QUEUE DELAY - MIN (VEH-H) MAX	0
AV BREAKDOWNS PER DAY	0
AV QUEUE DELAY/DAY (VEH-H)	0
AV TOTAL DELAY/DAY (VEH-H)	0

**AVERAGE ACCIDENT NUMBERS (PIA/DAY)**

MAIN ROUTE WITHOUT WORKS	0.0042
MAIN ROUTE WITH WORKS	0.0033
'DIVERSION'	0.0000

PIA: Personal Injury Accidents

**IMPACTS ON ROAD USERS**

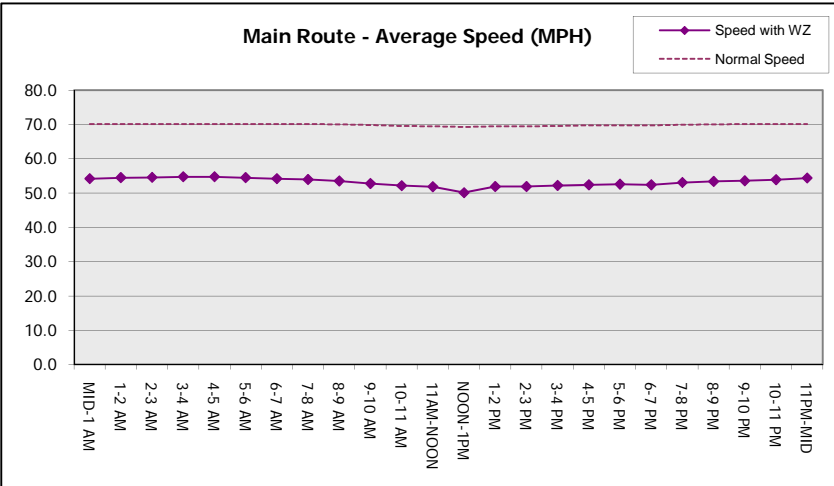
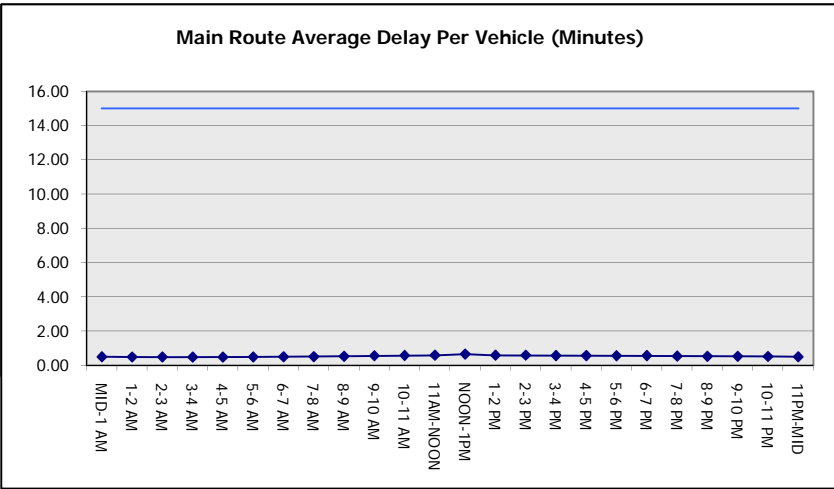
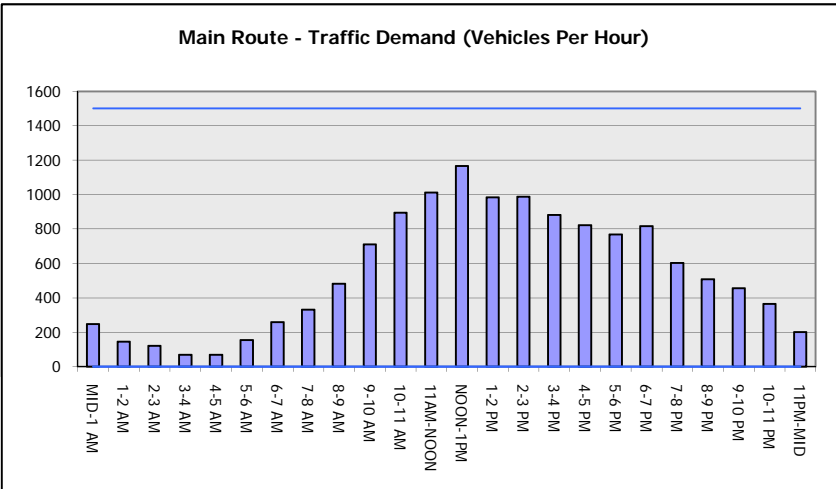
ROAD USER COSTS PER DAY	\$1,858
CONGESTED HOURS PER DAY*	0

\*Delays Exceeding User-Specified Maximum

**IH 794: LINCOLN AVE TO LINCOLN MEMORIAL DR (MILWAUKEE COUNTY)**  
**CONTINUOUS (24 HOUR) 2 LANE CLOSURE**  
**NO DIVERSION ROUTE (MAX QUEUE METHOD)**

**AUGUST**  
 Analyzed for 2009  
 Construction Season

**GRAPHICAL REPRESENTATION OF TRAFFIC MODEL INPUT AND OUTPUT**  
**SUNDAY WESTBOUND DIRECTION**



<b>IH 794: LINCOLN AVE TO LINCOLN MEMORIAL DR (MILWAUKEE COUNTY)</b> <b>CONTINUOUS (24 HOUR) 2 LANE CLOSURE</b> <b>NO DIVERSION ROUTE (MAX QUEUE METHOD)</b>	<b>AUGUST</b>
	Analyzed for 2009 Construction Season

**SUMMARY OF TRAFFIC MODEL OUTPUT**

SUNDAY EASTBOUND DIRECTION

TIME OF DAY	FLOWS AND CAPACITY IN VEH/HR						AVERAGE SPEEDS IN MPH			
	MAIN ROUTE		SITE CAPA CITY	FLOW		AV.DEL PER VEH (MINS)	AVERAGE QUEUE (VEH)	MAIN ROUTE		SITE
	DEMAND FLOW	PCT HEAVY		MAIN ROUTE	'DIVER TED'			WITHOUT WORK ZONE	WITH WORK ZONE	
MID-1 AM	592	0.0	1500	592	0	0.54	0	70.0	53.2	43.2
1-2 AM	319	0.0	1500	319	0	0.51	0	70.2	54.0	44.2
2-3 AM	302	0.0	1500	302	0	0.51	0	70.2	54.1	44.3
3-4 AM	148	0.0	1500	148	0	0.49	0	70.2	54.5	44.9
4-5 AM	112	0.0	1500	112	0	0.49	0	70.2	54.6	45.0
5-6 AM	133	0.0	1500	133	0	0.49	0	70.2	54.6	45.0
6-7 AM	198	0.0	1500	198	0	0.50	0	70.2	54.4	44.7
7-8 AM	232	0.0	1500	232	0	0.50	0	70.2	54.3	44.5
8-9 AM	272	0.0	1500	272	0	0.51	0	70.2	54.2	44.4
9-10 AM	440	0.0	1500	440	0	0.53	0	70.2	53.7	43.7
10-11 AM	613	0.0	1500	613	0	0.55	0	70.0	53.1	43.1
11AM-NOON	790	0.0	1500	790	0	0.56	0	69.7	52.5	42.4
NOON-1PM	928	0.0	1500	928	0	0.58	0	69.6	52.1	41.9
1-2 PM	965	0.0	1500	965	0	0.58	0	69.6	52.0	41.8
2-3 PM	1019	0.0	1500	1019	0	0.59	0	69.5	51.8	41.6
3-4 PM	1097	0.0	1500	1097	0	0.60	0	69.4	51.5	41.4
4-5 PM	1102	0.0	1500	1102	0	0.60	0	69.4	51.5	41.3
5-6 PM	981	0.0	1500	981	0	0.58	0	69.5	51.9	41.7
6-7 PM	905	0.0	1500	905	0	0.58	0	69.6	52.2	42.0
7-8 PM	745	0.0	1500	745	0	0.56	0	69.8	52.7	42.6
8-9 PM	702	0.0	1500	702	0	0.55	0	69.9	52.8	42.7
9-10 PM	629	0.0	1500	629	0	0.55	0	69.9	53.0	43.0
10-11 PM	524	0.0	1500	524	0	0.54	0	70.1	53.4	43.4
11PM-MID	335	0.0	1500	335	0	0.51	0	70.2	54.0	44.2

*----- SITE BREAKDOWN DELAYS -----*	
BREAKDOWN DURATION (MINS)	0
RANGE OF QUEUE DELAY - MIN (VEH-H) MAX	0.0
AV BREAKDOWNS PER DAY	0.00
AV QUEUE DELAY/DAY (VEH-H)	0.0
AV TOTAL DELAY/DAY (VEH-H)	0.0

*----- SITE ACCIDENT DELAYS -----*	
BREAKDOWN DURATION (MINS)	0
RANGE OF QUEUE DELAY - MIN (VEH-H) MAX	0
AV BREAKDOWNS PER DAY	0
AV QUEUE DELAY/DAY (VEH-H)	0
AV TOTAL DELAY/DAY (VEH-H)	0

AVERAGE ACCIDENT NUMBERS (PIA/DAY)	
MAIN ROUTE WITHOUT WORKS	0.0045
MAIN ROUTE WITH WORKS	0.0036
'DIVERSION'	0.0000

PIA: Personal Injury Accidents

ECONOMIC IMPACT ON ROAD USERS	
ROAD USER COSTS PER DAY	\$1,990
CONGESTED HOURS PER DAY*	0

\*Delays Exceeding User-Specified Maximum

**IH 794: LINCOLN AVE TO LINCOLN MEMORIAL DR (MILWAUKEE COUNTY)**  
**CONTINUOUS (24 HOUR) 2 LANE CLOSURE**  
**NO DIVERSION ROUTE (MAX QUEUE METHOD)**

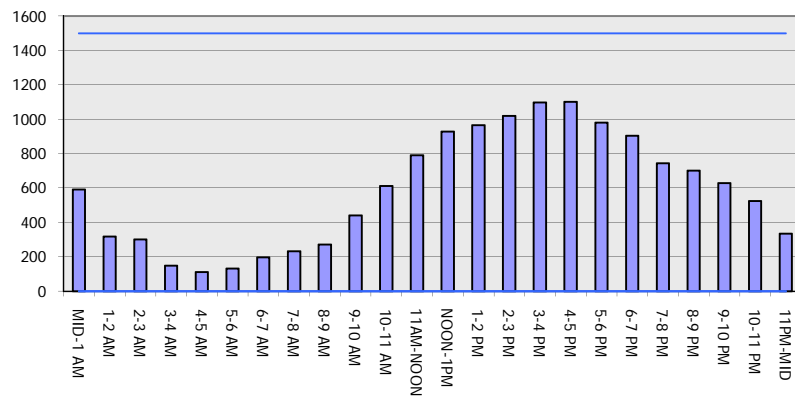
**AUGUST**

Analyzed for 2009  
 Construction Season

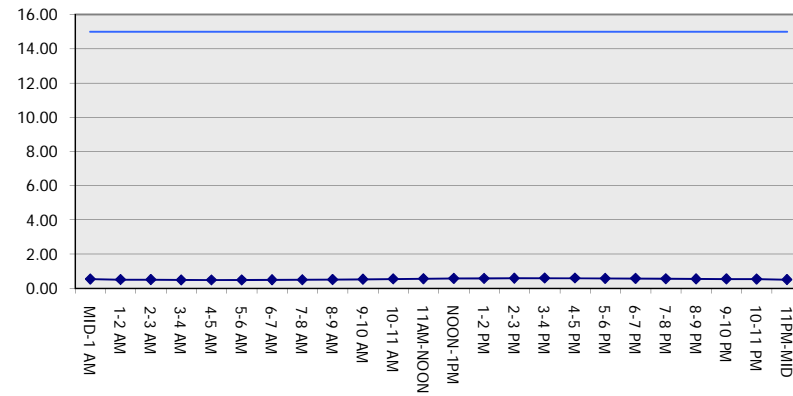
**GRAPHICAL REPRESENTATION OF TRAFFIC MODEL INPUT AND OUTPUT**

**SUNDAY EASTBOUND DIRECTION**

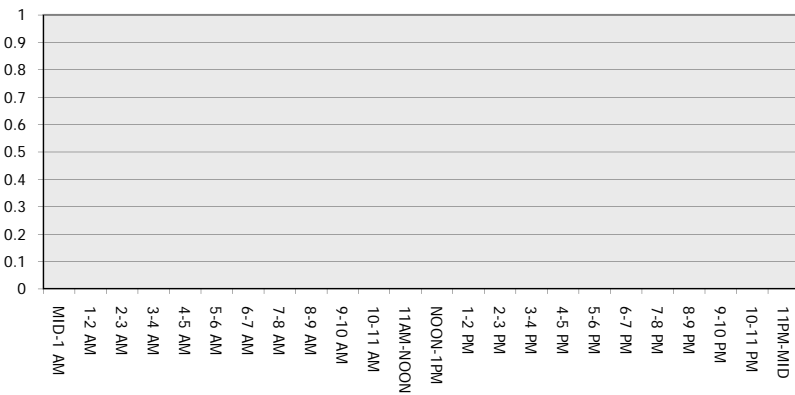
**Main Route - Traffic Demand (Vehicles Per Hour)**



**Main Route Average Delay Per Vehicle (Minutes)**



**Main Route - Average Queue Length (Vehicles)**



**Main Route - Average Speed (MPH)**

